

SCHEDULE OF REVISIONS

#	DATE

STATUS

PROJECT NUMBER: 0841 C
PROJECT DATE: 1 NOV 2017
DRAWN BY: FRD
APPROVED BY: xxx

SHEET DESCRIPTION

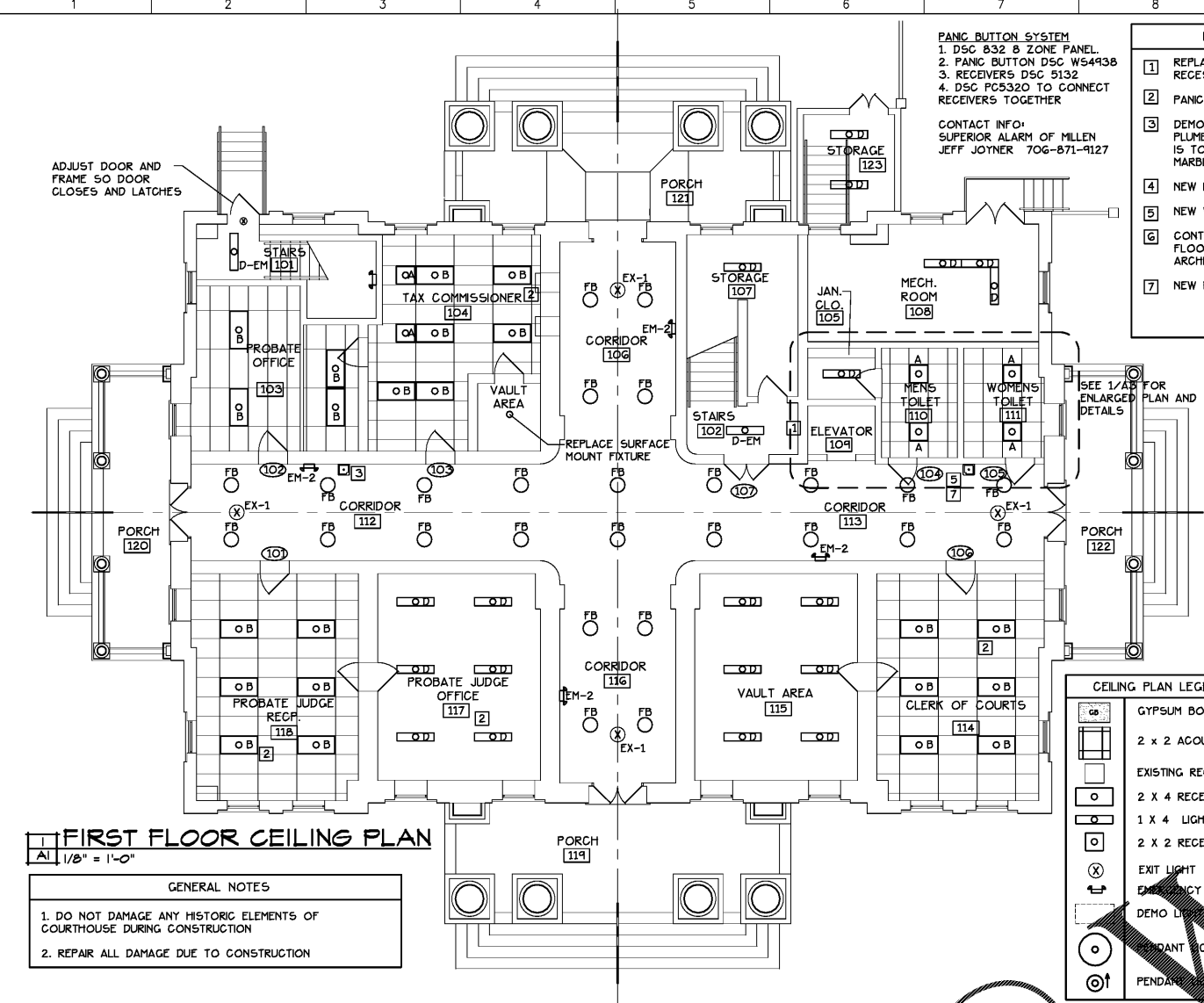
A1

PANIC BUTTON SYSTEM
1. DSC 832 B ZONE PANEL
2. PANIC BUTTON DSC W54938
3. RECEIVERS DSC 9132
4. DSC PC5320 TO CONNECT RECEIVERS TOGETHER

CONTACT INFO:
SUPERIOR ALARM OF MILLEN
JEFF JOYNER 706-871-9127

KEYED NOTES

- 1 REPLACE ELECTRIC PANEL WITH NEW RECESSED 200 AMP PANEL
- 2 PANIC BUTTON HOOKED INTO ALARM SYSTEM
- 3 DEMO EXISTING WATER FOUNTAIN AND PLUMBING. CONFIRM WITH OWNER IF OUTLET IS TO BE REMOVED. PATCH OPENINGS WITH MARBLE TO MATCH EXISTING
- 4 NEW LOCK FOR ELECTRIC PANEL
- 5 NEW WATER FOUNTAIN
- 6 CONTRACTOR TO INVESTIGATE "HUMP" IN FLOOR LOOK AT DEFORMATION WITH ARCHITECT. LEVEL FLOOR IN THIS AREA
- 7 NEW POWER OUTLET FROM CLOSEST POWER



1 FIRST FLOOR CEILING PLAN
A1 1/8" = 1'-0"

GENERAL NOTES

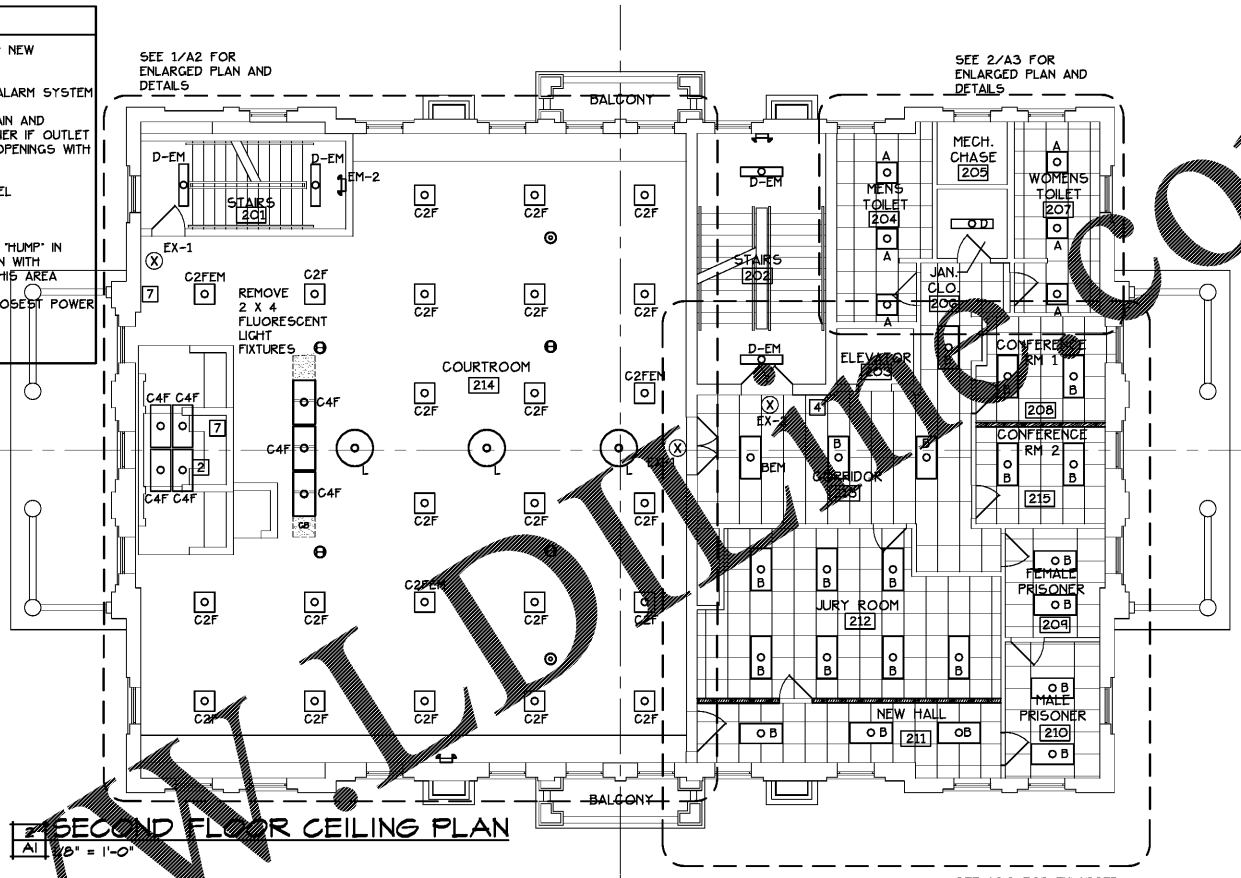
1. DO NOT DAMAGE ANY HISTORIC ELEMENTS OF COURTHOUSE DURING CONSTRUCTION
2. REPAIR ALL DAMAGE DUE TO CONSTRUCTION

CEILING PLAN LEGEND

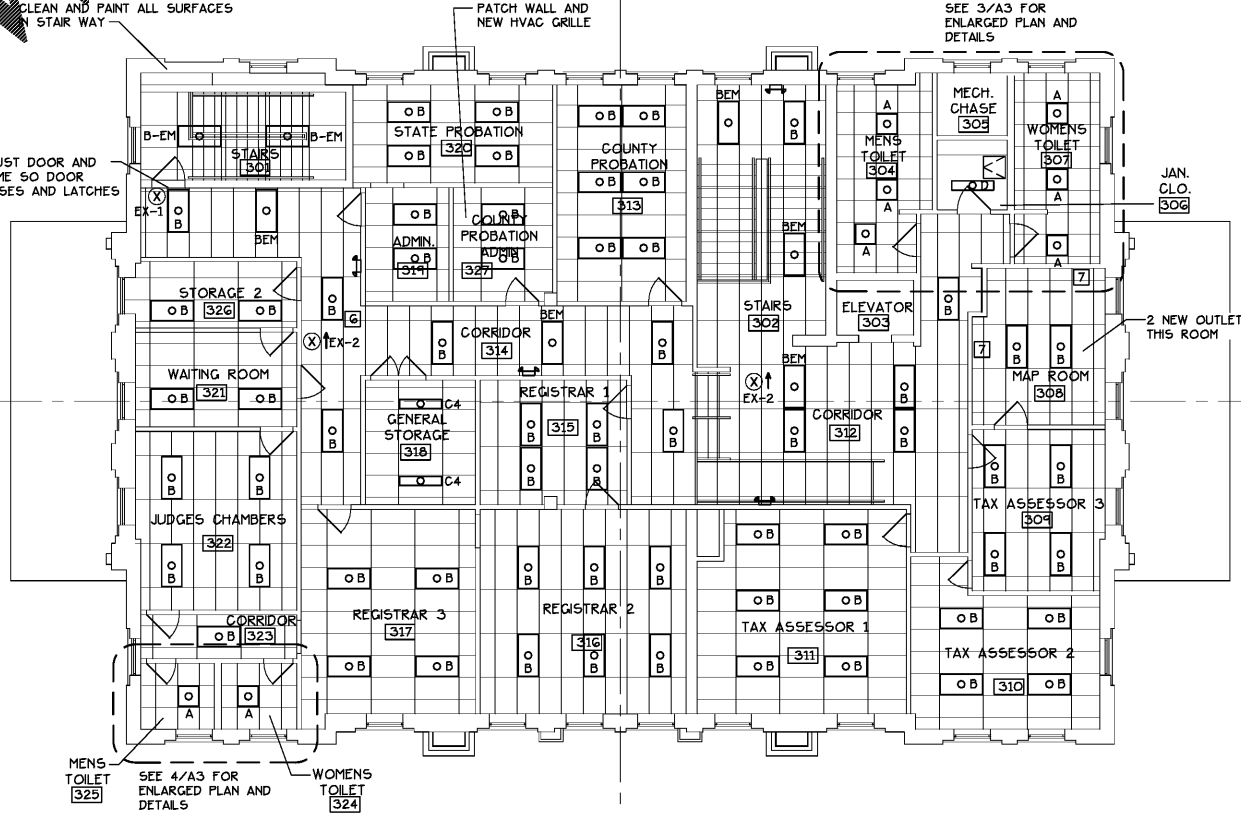
- GYPSUM BOARD CEILING
- 2 x 2 ACOUSTICAL CEILING GRID
- EXISTING RECESSED LIGHT FIXTURE
- 2 X 4 RECESSED LIGHT FIXTURE
- 1 X 4 LIGHT FIXTURE
- 2 X 2 RECESSED LIGHT FIXTURE
- ⊗ EXIT LIGHT
- ⊕ EMERGENCY LIGHT
- ⊙ DEMO LIGHT FIXTURE
- PENDANT LIGHT
- PENDANT LIGHT SMALL

LIGHT FIXTURE SCHEDULE

Qty	Type	MFG	Part	Description	Note	Replacing
2	A	Orion	LDRE181UNVFDX34422MST	2x2: Install in offices and corridor with existing grid ceiling & recessed fixtures	No substitutes - Aluminum construction ONLY, one piece housing, center basket, Made in USA, 4000lm, 4000K, D-10v dimming	This fixture replaces 88 watt Fluorescent Fixture
106	B	Orion	LDRE181UNVFDX34422MST	2x4: Install in offices, corridor, and stairwell with existing grid ceiling & recessed fixtures	No substitutes - Aluminum construction ONLY, one piece housing, center basket, Made in USA, 4000lm, 4000K, D-10v dimming	This fixture replaces 176 watt Fluorescent Fixture
8	R-EM	Orion	same as Type B except with battery back up	2x4: Install in offices, corridor, and stairwell with existing grid ceiling & recessed fixtures	No substitutes - Aluminum construction ONLY, one piece housing, center basket, Made in USA, 4000lm, 4000K, D-10v dimming	This fixture replaces 176 watt Fluorescent Fixture
21	C2F	Sinkar	ATA2R2040C1-2GR22	2x2: Hard ceiling application - recessed (courtroom)	No Substitutes - Use with C2 recessed fixtures in the courtroom	This fixture replaces 88 watt Fluorescent Fixture
3	C2FEM	Sinkar	same as Type C2F except with battery back up	2x2: Hard ceiling application - recessed (courtroom)	No Substitutes - Use with C2 recessed fixtures in the courtroom	This fixture replaces 176 watt Fluorescent Fixture
12	C4	Sinkar	ATA2R3040U1	2x4: Install in bathrooms with new grid ceiling - other grid locations	No Substitutes	This fixture replaces 176 watt Fluorescent Fixture
12	C4F	Sinkar	OGA24-WHT Flange Kit	2x4: Hard ceiling application - recessed (courtroom)	No Substitutes - Use with C4 recessed fixtures in the courtroom	This fixture replaces 176 watt Fluorescent Fixture
19	D	Sinkar	SY920LED4444	Replace existing 2 track lighting fixtures with 4' LED wraps (janitorial closets, storage areas, & vaults)	No Substitutes - L70: 80,000hr operating life, Made in USA	This fixture replaces 88 watt Fluorescent Fixture
5	D-EM	Sinkar	SY920LED4441U1-EL	Replace existing 2 track lighting fixtures with 4' LED wraps (stairwells)	No Substitutes - L70: 80,000hr operating life, Made in USA	This fixture replaces 88 watt Fluorescent Fixture
4	EM-2	Everette	EM-2 Series	Install emergency wall pace	No Substitutes - Recommended for life-safety	LED
8	EX-1	Sinkar	CZACH1C	Replace exit signage with LED edge-lit, single face - red letters	No Substitutes	LED
2	EX-2	Everette	TEK-200	Replace exit signage with LED edge-lit - double face - Mirrored double-sided, red letters	No Substitutes	LED
78	FB	Orion	6A19DM938R	LED A-lamp for Luminous Bowl Fixtures	No substitutes - Verify lamp base type	This lamp replaces compact fluorescent medium base lamps
3	I	Lightway	MONH-36-LED-U-126-4-Z3-W5A-DIM	36" Luminous Bowl, LED, Stem Mount, 36" w/36" OAH	No substitutes	LED



2 SECOND FLOOR CEILING PLAN
A1 1/8" = 1'-0"



3 THIRD FLOOR CEILING PLAN
A1 1/8" = 1'-0"

NOTE: CONTRACTOR SHALL ADD NEW R-19 BATT INSULATION AND ADJUST EXISTING OVER CEILING TILES FROM THIRD FLOOR OR ATTIC TO FORM CONTINUOUS LAYER OF INSULATION

NOTE: 5 NEW HVAC GRILLS AND CLEAN EXISTING CEILING GRID THROUGHOUT