


STORE NUMBER: 5553  
 1801 BEN SAWYER BOULEVARD  
 MT. PLEASANT, SC 29464  
 PROJECT TYPE: ADA and THH  
 DEAL TYPE:  
 CS PROJECT NUMBER: 106857

ARCHITECT OF RECORD  
  
 www.littleonline.com  
Their design and the usage shown are the property of Little Online Architectural Consulting. Their reproduction, copying or other use of their drawings without their written consent is prohibited and any infringement will be subject to legal action.

CONSULTANT:  


DEVELOPER:  


SEAL:  
  
 11-21-2017

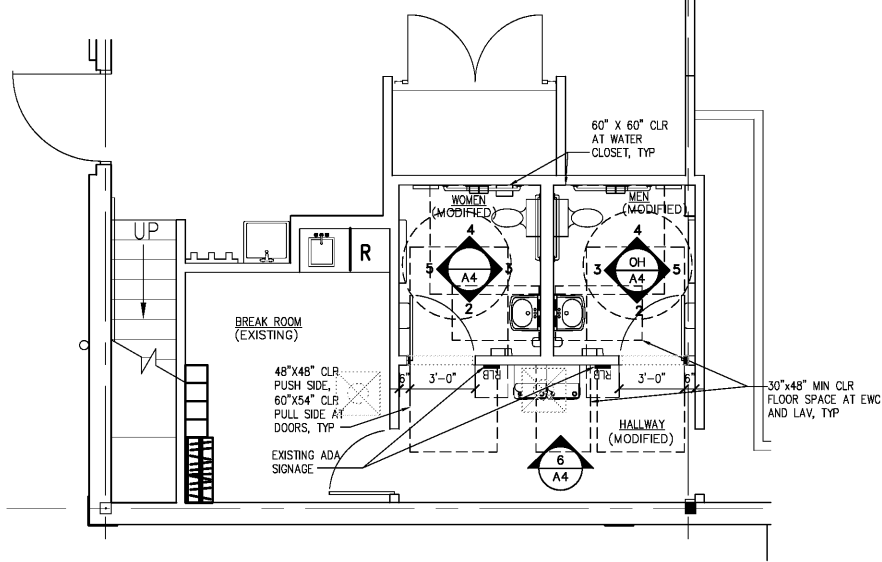
REVISIONS:  
 \_\_\_\_\_  
 \_\_\_\_\_  
 \_\_\_\_\_  
 \_\_\_\_\_  
 \_\_\_\_\_

CVS PROJECT MANAGER: TS  
 DRAWING BY: JAC  
 DATE: 10-23-2017  
 JOB NUMBER: 121-7815-08  
 TITLE:

ENLARGED PLANS,  
 DETAILS & ELEVATIONS

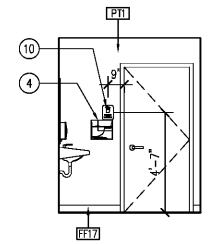
SHEET NUMBER:  
 A4

COMMENTS:

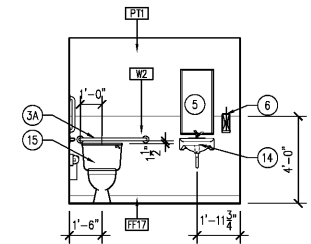


1 ENLARGED RESTROOMS PLAN  
 A4 SCALE: 1/4" = 1'-0"

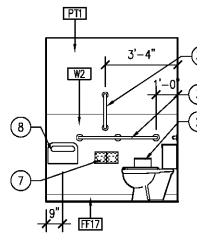
- GENERAL NOTES**
- SEE SCHEDULE FOR FIXTURES.
  - INSULATE AGAINST CONTACT ON ALL EXPOSED PIPES AND WATER SUPPLY VALVES BELOW LAVATORIES TO COMPLY WITH STATE AND LOCAL CODES.
  - SEE B/A4 FOR MOUNTING HEIGHTS OF ALL TOILET ROOM ACCESSORIES. VERIFY HEIGHT WITH LOCAL CODES.
  - MOUNT TOILET PAPER DISPENSER 7"-9" MAX. FROM TOILET TO CENTER LINE OF DISPENSER.
  - MOUNT TOILET PAPER DISPENSER 24" MIN. AFF AND BELOW GRAB BAR.
  - MOUNT FEMININE WASTE RECEPTACLE 20" FROM BACK WALL TO CENTERLINE AND 24" MIN. AFF AND BELOW GRAB BAR.
  - WHEN SPACE IS LIMITED, SEAT COVER DISPENSER MAYBE LOCATED UNDER GRAB BAR ON REAR OR SIDE WALL.
  - REPLACE SINGLE ROLL TOILET PAPER DISPENSER, WITH NEW DOUBLE ROLL PROTOTYPE. (CVS PREFERENCE)



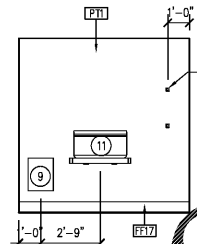
2 TOILET ELEVATION  
 A4 SCALE: 1/4" = 1'-0"



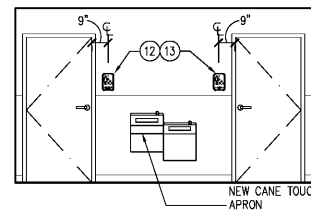
3 TOILET ELEVATION  
 A4 SCALE: 1/4" = 1'-0"



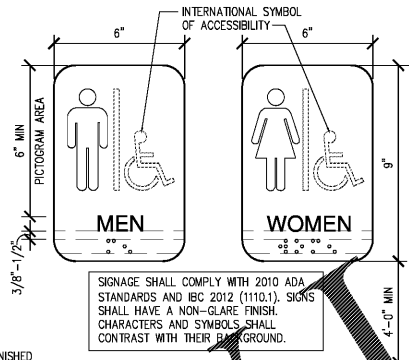
4 TOILET ELEVATION  
 A4 SCALE: 1/4" = 1'-0"



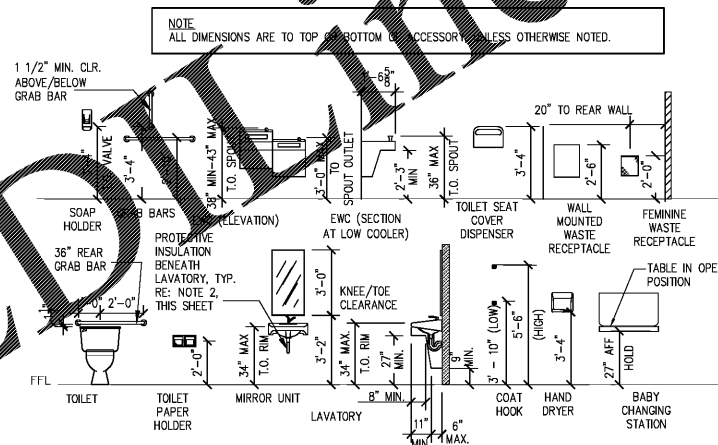
5 TOILET ELEVATION  
 A4 SCALE: 1/4" = 1'-0"



6 HALL ELEVATION  
 A4 SCALE: 1/4" = 1'-0"



7 RESTROOM SIGNAGE DETAIL  
 A4 SCALE: 3/8" = 1'-0"



8 ACCESS. MOUNTING HEIGHTS  
 A4 SCALE: 1/4" = 1'-0"

TOILET ROOM PLUMBING ACCESSORY SCHEDULE	
ITEM	DESCRIPTION
1	NEW COAT HOOKS BRADLEY 9114
2	NEW FEMININE TRASH RECEPTACLE (WOMEN ONLY) GRANGER 1E0X9
3	EXISTING 42" GRAB BAR TO BE REINSTALLED BRADLEY 8120-001420
3A	RELOCATED 36" GRAB BAR BRADLEY 8120-001360
3B	EXISTING 18" GRAB BAR (VERTICAL) TO BE REINSTALLED BRADLEY 8120-001180
4	NEW HAND DRYER BRADLEY 2902-2800, 110/120V
5	EXISTING 18"x36" MIRROR UNIT TO BE REINSTALLED BRADLEY 781-1836
6	NEW SOAP DISPENSER GOJD 5W626
7	NEW TOILET PAPER HOLDER WITH COVER BRADLEY 5126
8	NEW TOILET SEAT COVER TOUGH GUY 2VEX8
9	NEW WALL-MOUNTED WASTE RECEPTACLE BOBRICK B-279
10	NEW 7"x10" HAND WASH SIGN BRADY 88475
11	EXISTING BABY CHANGING STATION TO BE RELOCATED RUBBERMADE 7818-88
12	NEW RESTROOM SIGNS (DETAIL 7/A4) MEN'S W/ ISA GRAPHICS
13	NEW RESTROOM SIGNS (DETAIL 7/A4) WOMEN'S W/ ISA GRAPHIC
14	ZURN: #25354 28743-PC GRID STRAINER, Z8700 P-TRAP, Z8946-1-NT ADA TRAP ALT: CRANE #304V ALT: AMERICAN STANDARD #0321.026 LAVATORY: VITREOUS CHINA WALL-HUNG LAVATORY, PROVIDED WITH WALL HANGER, FAUCET HOLES ON 4" CENTERS, FRONT OVERFLOW FAUCET, DELTA #501 LF-HGMHDF, WITH RP330 POLISHED CHROME AERATOR, LESS POP-UP DRAIN AND LIFT HOLE IN POLISHED CHROME. 1-1/4" TAILPIECE, PROVIDE 3/8" WALL SUPPLIES WITH GRID STRAINER, P-TRAP, ADA TRAP, STOP AND SUPPLY PROTECTORS. ALT: FURNISH AND INSTALL "LAVAGUARD" #102 TRAP WRAP BY TRUEBRO FOR PF-2H. TRUEBRO TEL: (800) 340-5969.

NOTES:  
 1. CVS /PHARMACY HAS ENTERED INTO A NATIONAL ACCOUNT AGREEMENT WITH GRANGER FOR FURNISHING ALL THE TOILET ACCESSORIES AS SPECIFIED. COMPLETE INSTALLATION SHALL BE BY THE CONTRACTOR. FOR PRICING QUOTATIONS, PLACING ORDERS AND FURTHER INFORMATION CALL GRANGER (774) 274-2729.

Order Plans @ [www.littleonline.com](http://www.littleonline.com)