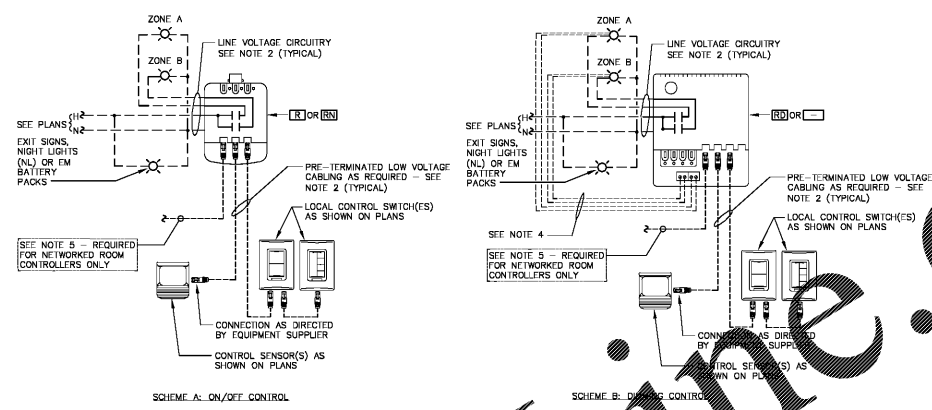
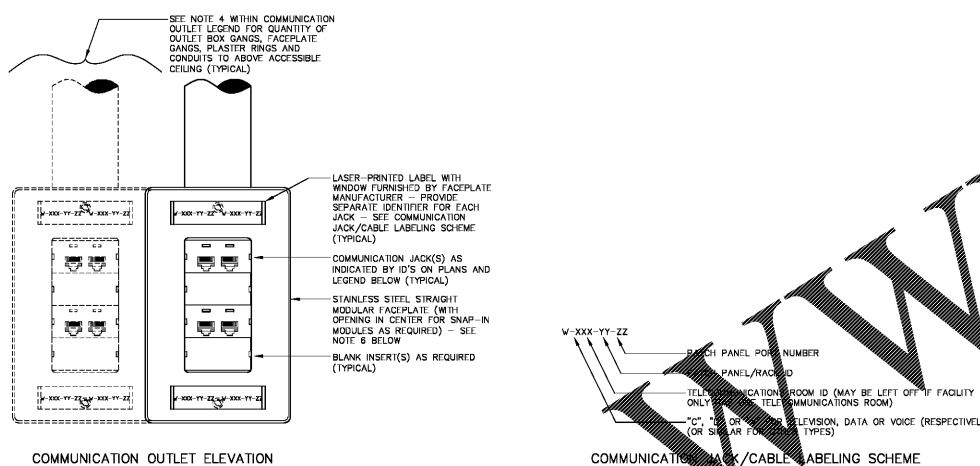


DETAIL "E-FS"
LAY-IN FIXTURE SUPPORT
SCALE : NONE



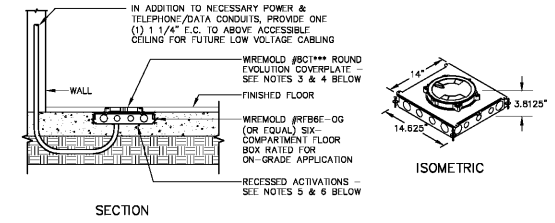
DETAIL "E-RC"
TYPICAL ROOM DIGITAL LIGHTING CONTROL WIRING DIAGRAM(S)
SCALE : NONE



DETAIL "E-CO"
COMMUNICATION OUTLET
SCALE : NONE

COMMUNICATION OUTLET LEGEND				
JACK ID(S) SHOWN ON PLANS	JACK TYPE(S)	ASSOCIATED HOMERUN CABLING FROM JACK (SEE NOTE 3 BELOW)	CONDUIT CASING TO JACK (SEE NOTE 4 BELOW)	REMARKS
1A	ONE (1) WHITE RCA JACK	2- CONDUCTOR, 20 GAUGE, UNSHIELDED SPEAKER CABLE	ASSOCIATED SPEAKERS (SEE PLANS FOR LOCATIONS)	
2A	ONE (1) WHITE RCA JACK (LEFT) ONE (1) RED RCA JACK (RIGHT)	2 SETS OF 2- CONDUCTOR, 20 GAUGE, UNSHIELDED SPEAKER CABLE	ASSOCIATED SPEAKERS (SEE PLANS FOR LOCATIONS)	
*C	"T" CONNECTOR TELEVISION JACK(S)	DIR. 6/U CABLE	NEAREST CATV SYSTEM DIRECTIONAL COUPLER OR FRONT-END EQUIPMENT AS DIR. BY SUPPLIER	
*D	RJ45 DATA JACK(S)	CAT5 DATA CABLE(S)	NEAREST DATA PATCH PANEL	
*P	ONE (1) C2G RAPIDRUN #42418 PASSIVE DECORATIVE WALL PLATE WITH VGA, 3.5MM & RCA AUDIO/VIDEO JACKS. THIS IS A CORBOX OR PORT-THRU INTER PLATE IS REQUIRED.	SEE "PR" JACK/OUTLET REQUIREMENTS	SEE "PR" JACK/OUTLET REQUIREMENTS	SEE NOTE 8 BELOW
ONE (1) C2G RAPIDRUN #42418 PASSIVE DECORATIVE WALL PLATE WITH VGA, 3.5MM & RCA AUDIO/VIDEO JACKS. THIS IS A CORBOX OR PORT-THRU INTER PLATE IS REQUIRED.	ONE (1) C2G RAPIDRUN #4118* DIGITAL PLENUM RUNNER CABLE & ONE (1) C2G RAPIDRUN #6001* PLENUM MULTI-FORMAT ALL-IN-ONE RUNNER CABLE	ASSOCIATED LOW VOLTAGE "HP" OUTLET AT WALL/FLOOR		SEE NOTES 8 & 9 BELOW
RJ45 VOICE JACK(S)	CAT5 VOICE CABLE(S)	NEAREST TELEPHONE PATCH PANEL/BACKBOARD		
1W	ONE (1) RJ45 VOICE JACK	ONE (1) CAT6 VOICE CABLE.	NEAREST TELEPHONE PATCH PANEL/BACKBOARD	SEE NOTE 6 BELOW

- NOTES:**
- THE ASTERISK "*" WITHIN THE JACK ID SECTION ABOVE REPRESENT THE QUANTITIES OF EACH JACK/CABLE TYPE. FOR EXAMPLE, "3D" REPRESENTS THREE (3) DATA JACKS/CABLES.
 - THE JACK IDENTIFIERS SHOWN ABOVE MAY BE COMBINED TOGETHER ON PLANS. FOR EXAMPLE, THE IDENTIFIER "1V2D1C" REPRESENTS ONE (1) VOICE JACK/CABLE, TWO (2) DATA JACKS/CABLES AND ONE (1) COAXIAL TV JACK/CABLE. OUTLETS MAY CONSIST OF ANY COMBINATION OF THE ABOVE JACK TYPES.
 - ALL LOW VOLTAGE CABLING SHALL BE PLENUM-RATED.
 - THE QUANTITY OF OUTLET BOX GANGS AND CONDUITS FOR EACH COMMUNICATION OUTLET ASSEMBLY SHALL BE AS FOLLOWS:
1-2 JACKS: 1-GANG OUTLET BOX WITH 1-GANG FACEPLATE AND ONE 1" CONDUIT TO ABOVE ACCESSIBLE CEILING SPACE (AND IN OTHER INACCESSIBLE OR EXPOSED AREAS).
3-4 JACKS: 2-GANG OUTLET BOX WITH 1-GANG PLASTER RING, 1-GANG FACEPLATE AND ONE 1" CONDUIT TO ABOVE ACCESSIBLE CEILING SPACE (AND IN OTHER INACCESSIBLE OR EXPOSED AREAS).
5-8 JACKS: 2-GANG OUTLET BOX WITH 1-GANG FACEPLATE AND TWO 1" CONDUITS TO ABOVE ACCESSIBLE CEILING SPACE (AND IN OTHER INACCESSIBLE OR EXPOSED AREAS).
9-12 JACKS: 3-GANG OUTLET BOX WITH 3-GANG FACEPLATE AND THREE 1" CONDUITS TO ABOVE ACCESSIBLE CEILING SPACE (AND IN OTHER INACCESSIBLE OR EXPOSED AREAS).
 - PROVIDE A NYLON BUSHING ON EACH END OF EACH CONDUIT (SPECIFIED WITHIN NOTE 4 ABOVE) TO PROTECT CABLES.
 - TYPE "1W" OUTLETS SHALL BE FURNISHED WITH STAINLESS STEEL WALL-MOUNT TELEPHONE PLATES WITH MOUNTING STUDS AND RECESSED JACKS AND SHALL BE MOUNTED AT 54" A.F.T. UNLESS NOTED OTHERWISE.
 - COMMUNICATION OUTLET SHALL BE LOCATED A MAXIMUM OF 8 INCHES FROM THE ADJACENT POWER OUTLET.
 - ALL AV CABLING TYPES SHALL BE CONFIRMED WITH OWNER PRIOR TO ORDERING MATERIALS.
 - COORDINATE LOCATION OF ALL OUTLETS AT PROJECTOR WITHIN PROJECTOR BASE WHERE POSSIBLE.



DETAIL "E-FB1"
MULTI-SERVICE FLOOR BOX (MEDIUM SIZE)
SCALE : NONE

- DETAIL NOTES**
- THE EXACT LOCATIONS AND ORIENTATIONS OF ALL FLOOR BOXES SHALL BE VERIFIED BY THE CONTRACTOR WITH THE ARCHITECT PRIOR TO ROUGH-IN.
 - CONTRACTOR SHALL BE RESPONSIBLE FOR COORDINATING PENETRATIONS THROUGH SLABS AND OPENINGS/CONDUITS WITHIN SLABS WITH THE INSTALLER OF THE SLABS PRIOR TO ROUGH-IN.
 - ALL COVERPLATE MATERIALS/FINISHES SHALL BE AS SELECTED BY THE ARCHITECT. CONTRACTOR SHALL PROVIDE CARPET/TILE OUTPUT INSERTS IN COVERPLATE LID (10 MATCH ADJACENT CARPET/TILE) WHERE LID HAS AN INSERT AREA.
 - ALL COVER FLANGE OPTIONS SHALL GENERALLY BE AS FOLLOWS, BUT SHALL BE SUBMITTED TO THE ARCHITECT FOR REVIEW/APPROVAL PRIOR TO ORDERING FLOOR BOXES:
a. CARPET AND VCT FLOORING: FLANGED TRIM.
b. EXPOSED CONCRETE, WOOD, TILE OR SIMILAR FLOORING (WITH GROUTING): FLANGELESS TRIM.
 - EACH FLOOR BOX SHALL BE PROVIDED WITH TWO (2) 20A-125V-1P, GROUNDING NEMA 5-20R DUPLEX POWER RECEPTACLES CONNECTED TO THE CIRCUITS INDICATED ON THE PLANS, UNLESS NOTED OTHERWISE.
 - EACH FLOOR BOX SHALL BE PROVIDED WITH COMMUNICATION JACKS AND ASSOCIATED LOW VOLTAGE CABLING AS INDICATED BY "1V2D" OR SIMILAR NOTATIONS ON PLANS. CONTRACTOR SHALL REFER TO THE COMMUNICATION OUTLET LEGEND AT DETAIL "E-CO" FOR A DESCRIPTION OF ALL ASSOCIATED JACK & CABLE TYPES.

ISSUE	DATE
Big Issue	11/20/2017

Oneonta Community Development
Center
100 1st Ave. W.
Oneonta, AL 35121
GMC # ABHM170022



ELECTRICAL DETAILS

E2.02
Sheet

JACKSON, RENFRO & ASSOCIATES, INC.
140 VILLAGE STREET SUITE 4 • BIRMINGHAM, ALABAMA 35202
ROBERT RENFRO, PE
14088999000.COM
(205) 534-7071
(205) 992-1076
FAX (205) 992-1076
140 VILLAGE STREET SUITE 4 • BIRMINGHAM, ALABAMA 35202