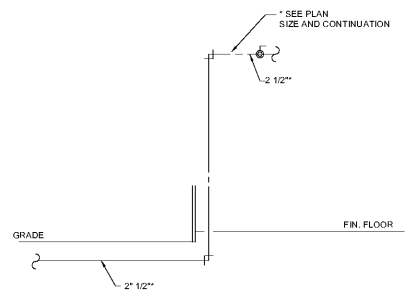
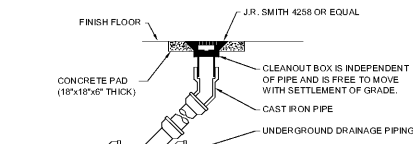


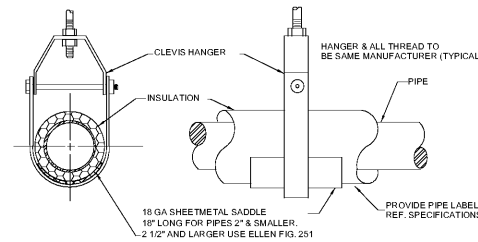
DETAIL of TMV BELOW LAVATORY  
NO SCALE



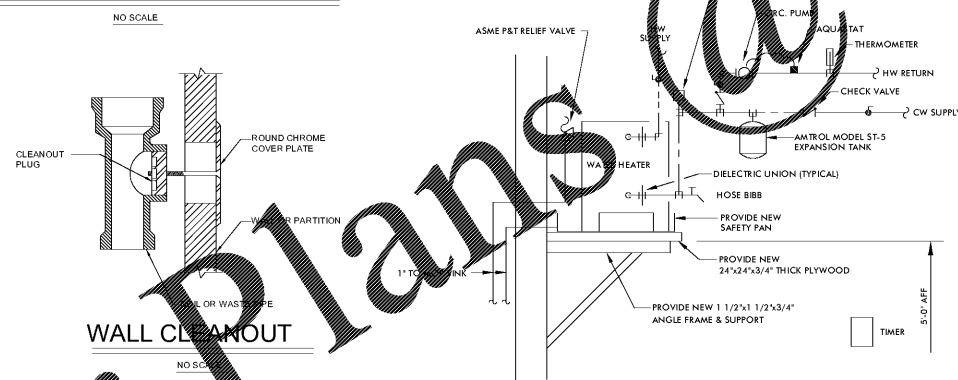
DETAIL OF WATER ENTRY  
NO SCALE



DETAIL of CLEANOUT to GRADE  
NO SCALE



SUSPENDED PIPE SUPPORT  
NO SCALE



WALL CLEANOUT  
NO SCALE

**GENERAL NOTES**

1. LOCATIONS OF UTILITIES SHOWN ON PLANS ARE APPROXIMATE. VERIFY WITH LOCAL UTILITY PRIOR TO BIDDING.
2. CONTRACTOR SHALL VERIFY EXACT LOCATION, SIZE AND ELEVATION OF ALL EXISTING SERVICES PRIOR TO INSTALLING ANY NEW PIPE.
3. ALL OUTSIDE CLEANOUTS SHALL BE BROUGHT TO GRADE AND EMBEDDED IN 18"x18" THICK CONCRETE PAD. (J.R. SMITH 4258 OR EQUAL.)
4. WHEREVER DISSIMILAR METALS ARE CONNECTED ON WATER LINES, A DIELECTRIC UNION SHALL BE USED.
5. ALL HORIZONTAL WATER AND VENT PIPING SHALL BE RUN ABOVE CEILING ON PLAN WHICH SHOWN UNLESS OTHERWISE NOTED.
6. ALL HORIZONTAL SANITARY PIPING IS RUN BELOW FLOOR ON PLAN WHICH SHOWN UNLESS OTHERWISE NOTED.
7. ALL WATER PIPING BELOW SLAB ON GRADE SHALL BE BENT UP AT ENDS SO THAT NO JOINTS OCCUR BELOW FLOOR.
8. COORDINATE ALL PIPE ROUTING TO AVOID CONFLICTS WITH STRUCTURAL, MECHANICAL, AND ELECTRICAL FEATURES OF BUILDING.
9. ALL WALL HYDRANTS AND HOSE BIBBS SHALL BE MOUNTED 24" ABOVE FINISH GRADE OR FINISH FLOOR UNLESS OTHERWISE NOTED.
10. ALL WATER PIPING INSTALLED IN EXTERIOR WALLS SHALL BE LOCATED ON THE INTERIOR SIDE OF THE EXTERIOR WALL INSULATION.
11. NO VENT THRU ROOF IS TO BE LOCATED WITHIN 10 FEET OF ANY BUILDING AIR INTAKES, PER CODE. COORDINATE WITH MECHANICAL AND GENERAL CONTRACTORS.
12. DOMESTIC WATER PIPING AND FIRE PROTECTION PIPING LOCATED ABOVE THE CEILING, SHALL BE INSTALLED BELOW CEILING INSULATION.
13. CONTRACTOR SHALL COORDINATE MECHANICAL FLOOR DRAIN LOCATIONS WITH MECHANICAL EQUIPMENT PRIOR TO INSTALLATION.
14. INSTALL SHOCK ARRESTORS ON ALL BRANCH LINES.
15. CONTRACTOR SHALL COORDINATE ALL SINKS WITH CASEWORK PRIOR TO ORDERING SINKS.

**PLUMBING LEGEND**

- |       |                       |        |                           |
|-------|-----------------------|--------|---------------------------|
| —     | SOIL OR WASTE LINE    | P-#    | PLUMBING FIXTURE NUMBER   |
| - - - | VENT LINE             | [R#]   | RISER DIAGRAM NUMBER      |
| - - - | COLD WATER LINE       | AFF    | ABOVE FINISH FLOOR        |
| - - - | HOT WATER LINE        | CO     | CLEAN OUT                 |
| - - - | HOT WATER RETURN LINE | ABV    | ABOVE                     |
| —     | BALL VALVE            | WS     | WASTE STACK               |
| —     | UNION                 | VS     | VENT STACK                |
| —     | PIPE TURNING UP       | — — WH | WALL HYDRANT              |
| —     | PIPE TURNING DOWN     | BFF    | BELOW FINISH FLOOR        |
| —     |                       | FD     | FLOOR DRAIN               |
| —     |                       | VSTR   | VENT STACK THRU ROOF      |
| —     |                       | TMV    | THERMOSTATIC MIXING VALVE |
| —     |                       | MFD    | MECHANICAL FLOOR DRAIN    |

**PLUMBING FIXTURE SCHEDULE**

MARK	FIXTURE	WASTE	CW	HW	REMARKS
CP	CIRCULATION PUMP				ARMSTRONG COMPASS 1/12 HP, 115/1/60. ALL BRONZE. PROVIDE WITH AQUASTAT AND TIMER.
ET	EXPANSION TANK				AMTROL THERM - X-TROL #ST-5 EXPANSION TANK. PRE-CHARGED, WELDED STEEL CONSTRUCTION. ISOLATION BETWEEN WATER AND AIR SHALL BE BY A BUTYL DIAPHRAGM. SEE WATER HEATER DETAIL ON DRAWINGS.
EWH	ELECTRIC WATER HEATER				LOCHINVAR JRJ010ES WITH STORAGE CAPACITY OF 10 GALLONS. SET OUTLET TEMPERATURE AT 125 F. PROVIDE NEW P&T RELIEF VALVE. INSTALL AS DETAILED ON DRAWINGS. 208V, 1 PHASE. 2 KW. VERIFY VOLTAGE WITH ELECTRICAL SECTION.
FD	FLOOR DRAIN				J.R. SMITH #2010 WITH 6" ROUND NICKEL BRONZE GRATE. PROVIDE DEEP SEAL TRAP. PROVIDE WITH J.R. SMITH TRAP INSERT.
MFD	MECHANICAL FLOOR DRAIN				J.R. SMITH #2242 WITH SEDIMENT BUCKET. PROVIDE DEEP SEAL TRAP. PROVIDE WITH J.R. SMITH TRAP INSERT.
P-1	WATER CLOSET - ADA COMPLIANT	4"	1"		FLOOR MOUNTED - KOHLER K-96057-SS-0 COMPLETE. SLOAN #111 FLUSH VALVE WITH YJ BRACKET AND CHURCH "DURA GUARD" MODEL #2155 SSC SEAT. MUST MEET A.D.A. GUIDELINES.
P-2	WATER CLOSET	4"	1"		FLOOR MOUNTED - KOHLER K-96053-SS-0 COMPLETE. SLOAN #111 FLUSH VALVE WITH YJ BRACKET AND CHURCH "DURA GUARD" MODEL #2155 SSC SEAT.
P-3	URINAL - ADA	3"	1"		WALL MOUNTED-KOHLER K-5016-ET COMPLETE. J.R. SMITH 600 SERIES URINAL SUPPORT, K-9183 STAINLESS STEEL STRAINER AND SLOAN #186 FLUSH VALVE WITH YJ BRACKET. SET LIP 17" AFF. MUST MEET A.D.A. GUIDELINES.
P-4	LAVATORY	1 1/4"	1/2"	1/2"	COUNTER MTD-KOHLER K-2196. SYMMONS S-20-0 FAUCET. K7715 OUTLET WITH TAIL PIECE. J.R. SMITH #700-M31 FIXTURE SUPPORT. MCGUIRE #165 SUPPLIES WITH STOPS AND MCGUIRE #8872 P-TRAP. INSULATE P-TRAP, STOPS, AND SUPPLIES WITH "PRO-WRAP" BY MCGUIRE. MOUNT WITH RIM MAXIMUM 34" AFF. PROVIDE WITH LAWLOR #570 MIXING BELOW SINK UNLESS OTHERWISE NOTED ON THE DRAWINGS, ADJUSTED TO PROVIDE 100°F TO HW SIDE OF FAUCET.
P-5	DOUBLE BOWL SINK	1 1/2"	1/2"	1/2"	ELKAY LRAD-3321, LK-35 STRAINER, SYMMONS S-23-3 FAUCET. MCGUIRE #8912 P-TRAP AND #165 STOPS WITH SUPPLIES.
P-6	REF. ICE MAKER BOX		1/2"		FURNISHED AND INSTALLED UNDER ANOTHER SECTION. PROVIDE IN WALL BEHIND REFRIGERATOR A GUY GRAY MODEL "B" 16 GAUGE ALL METAL BOX LESS DRAIN AND SUPPLIES. PROVIDE IN BOX A 1/2" BALL VALVE WITH 10 FEET OF 1/4" 9SOFT COPPER COILED IN BOX FOR CONNECTION TO REFRIGERATOR ICE MAKER.
P-7	MOP SINK	3"	1/2"	1/2"	STERN WILLIAMS #SBC-1700 (24" X 24") COMPLETE, T-35 HOSE WITH WALL HOOK, STAINLESS STEEL BACK SPLASH AND CHICAGO FAUCET.
P-8	WATER COOLER - ADA COMPLIANT	1 1/2"	1/2"		ELKAY EZSTLSC BI-LEVEL, STAINLESS STEEL CABINET, WITH WATERWAYS MANUFACTURED OF 100% LEAD FREE MATERIAL. J.R. SMITH #834 FIXTURE SUPPORT. BALL VALVE STOP WITH SUPPLY. SAFETY-GUARD BUBBLER. MCGUIRE #8872 P-TRAP. FLUSH INSULATION. TRAP. MOUNT WITH LOWER SPOUT OUTLET 36" ABOVE FINISH FLOOR. PROVIDE COLOR CHART FOR ARCHITECT COLOR SELECTION.
WH	WALL HYDRANT		3/4"		J.R. SMITH #5509-QT, WITH INTEGRAL BACKFLOW PREVENTER, LATCHING COVER, PROOF AND OF PROOF LENGTH. MOUNT IN WALL IN WHICH INSTALLED. ALL BRONZE BOX. VALVE SEAT MUST BE ON BUILDING SIDE OF EXTERIOR WALL. INSULATE. INSTALL WITH CENTER LINE 24" ABOVE FINISH GRADE. PROVIDE OWNER WITH ONE (1) LOOSE KEY FOR EACH WALL HYDRANT.

**EDMONDS**  
Engineering Solutions

2701 1st Avenue S  
Birmingham, AL 35233  
T 205.873.4482  
www.edmondsengineering.com

Project Number:  
BHM17207

ISSUE DATE	ISSUE	DATE
BID ISSUE	11/30/2017	

Oneonta Community Development  
Center  
100 1st Ave W.  
Oneonta, AL 35121  
GMC # ABHM170022



**SCHEDULES, LEGENDS,  
NOTES, & DETAILS**

**P0.01**  
Sheet of

Order Plans @ www.ldilvine.com