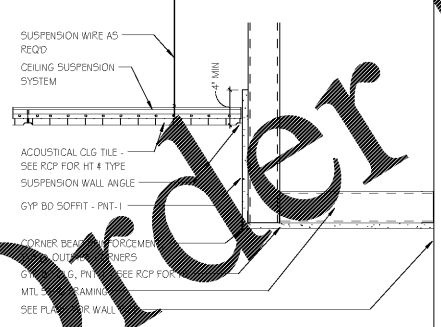


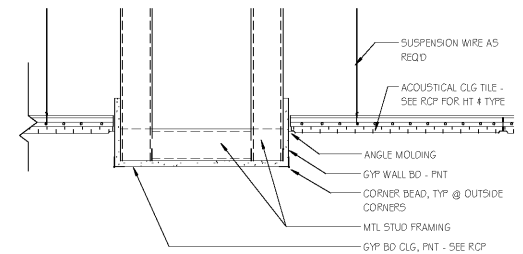
11/30/2017 5:23:28 PM



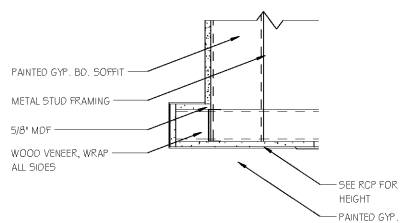
A1 ACT/GYP SOFFIT
SCALE: 1/2" = 1'-0"



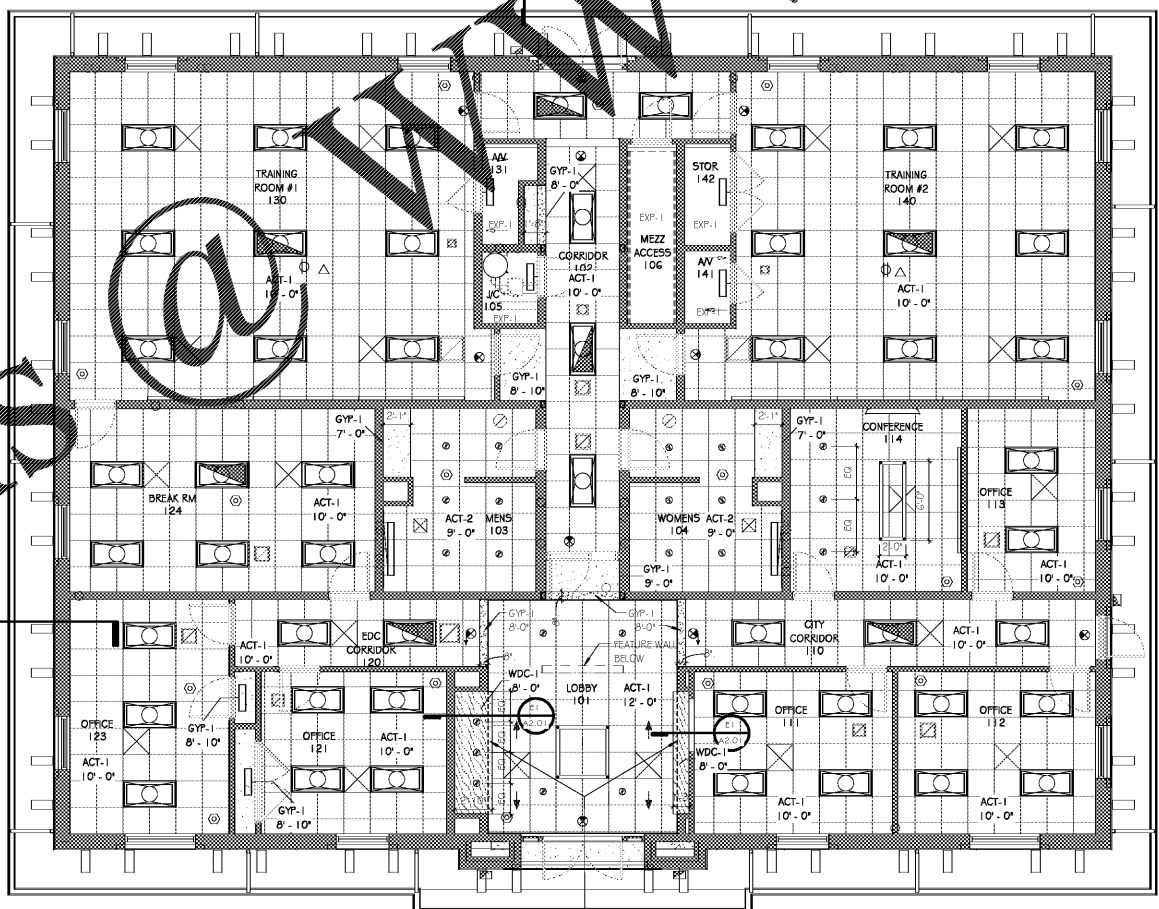
C1 ACT/GYP/ACT
SCALE: 1/2" = 1'-0"



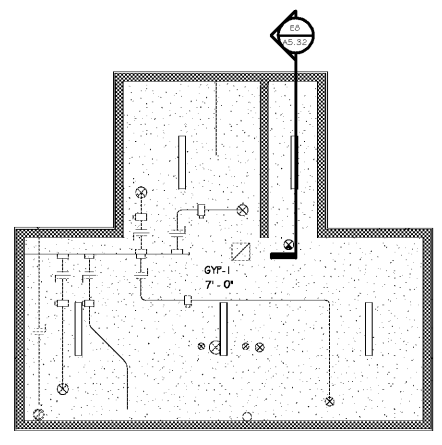
E1 WOOD CEILING
SCALE: 1/2" = 1'-0"



A4 REFLECTED CEILING PLAN
SCALE: 3/16" = 1'-0"



G6 TRUSS BEARING
SCALE: 3/16" = 1'-0"



REFLECTED CEILING PLAN LEGEND

CEILING FINISHES		LIGHTING	
	2x2 LAY-IN ACOUSTICAL CEILING GRID SYSTEM		2x4 LIGHT FIXTURE
	RECESSED LIGHT POCKET		2x2 LIGHT FIXTURE
	GYP-SUM BOARD - INTERIOR		WALL MOUNTED STRIP
	GYP-SOFFIT - EXTERIOR		PENDANT MOUNTED LIGHT FIXTURE
	EXPOSED STRUCTURE		RECESSED LIGHT FIXTURE
	SUPPLY DIFFUSER		WALL MOUNTED LIGHT FIXTURE
	SUPPLY DIFFUSER		PENDANT MOUNTED LINEAR LIGHT FIXTURE
	RETURN AIR GRILLE		RECESSED LINEAR LIGHT FIXTURE
	EXHAUST FAN		
	FIRE ALARM		
	EXIT SIGN		

CEILING FINISH KEY

NUMBER	TYPE	DETAIL DESCRIPTION
ACT-1	ACOUSTICAL CEILING TILE SYSTEM	PRODUCT EQUAL TO: MANUFACTURER: ARMSTRONG STYLE: ULTIMA - BEVELED REGULAR #1912, NRC: 0.75 COLOR: WHITE SIZE: 24" X 24" X 3/4" SUSPENSION SYSTEM: SUPRATINE 9/16" EXPOSED TEE COLOR: WHITE LOCATIONS: LOBBY, RECEPTION, CLASSROOMS, OFFICES AND WHERE NOTED
ACT-2	ACOUSTICAL CEILING TILE SYSTEM	PRODUCT EQUAL TO: MANUFACTURER: ARMSTRONG STYLE: ULTIMA - HEALTH ZONE - SQUARE LAY-IN #1935 NRC: 0.70 COLOR: WHITE SIZE: 24" X 24" X 3/4" SUSPENSION SYSTEM: PRELUDE ML151/6" EXPOSED TEE COLOR: WHITE LOCATIONS: RESTROOMS
GYP-1	GYP BOARD CEILING SYSTEM	PRODUCT EQUAL TO: PAINTED GYP BOARD CEILING COLOR: FNT-1 U.N.O. ON RCP
GYP-2	GYP BOARD CEILING SYSTEM	PRODUCT EQUAL TO: TYPE X GYP BOARD CEILING - 1 HOUR FIRE RATED COLOR: FNT-1 U.N.O. ON RCP
EXP-1	EXPOSED TO STRUCTURE	EQUAL TO: EXPOSED TO STRUCTURE - WITH NO FINISH
WDC-1	WOOD CEILING	PRODUCT EQUAL TO: WOOD VENEER ON MDF SPECIES: MATCH WOOD FEATURE WALL STAIN: MATCH WOOD FEATURE WALL LOCATION: LOBBY - SEE DRAWINGS

GENERAL NOTES

- INTERIOR CEILING HEIGHTS AS INDICATED ON THE REFLECTED CEILING PLANS.
- REFER TO CEILING PLANS FOR ACT LAYOUT AND NOTE WHERE CEILING GRID IS TO ALIGN WITH ROOM ELEMENTS. CARE IS TO BE TAKEN TO AVOID CEILING TILE CUTS OF LESS THAN 4" IN ANY DIRECTION WHEN POSSIBLE. CONTACT ARCHITECT/DRAWER WITH DISCREPANCIES.
- REFER TO CONSTRUCTION FLOOR PLANS FOR REQUIRED COMPOSITION OF WALL CONSTRUCTION.
- LOCATION OF LIGHTS, DIFFUSERS, AND RETURN AIR GRILLES TO BE COORDINATED BETWEEN REFLECTED CEILING PLANS, LIGHTING PLANS, AND HVAC PLANS. FINAL LOCATION TO BE APPROVED BY ARCHITECT.
- COORDINATE WITH OWNERS AV CONSULTANT FOR PROJECTION SCREEN AND PROJECTOR LOCATION.
- SEE SPECIFICATIONS FOR ADDITIONAL CEILING FINISH INFORMATION AND REQUIREMENTS. NOTIFY ARCHITECT WITH ANY DISCREPANCIES BETWEEN SPECIFICATION AND DRAWINGS.
- WHERE EXIT SIGNS ARE LOCATED ABOVE DOORWAYS, CENTER ABOUT DOOR.

ISSUE DATE	ISSUE	DESCRIPTION
	BID ISSUE	11/30/2017

Oneonta Community Development
Center
100 1st Ave W.
Oneonta, AL 35121
GMC # ABHM170022

REFLECTED CEILING PLAN
A2.01
Sheet of

2701 1st Avenue S
Birmingham, AL 35233
T 205.879.4462
GMCNETWORK.COM

