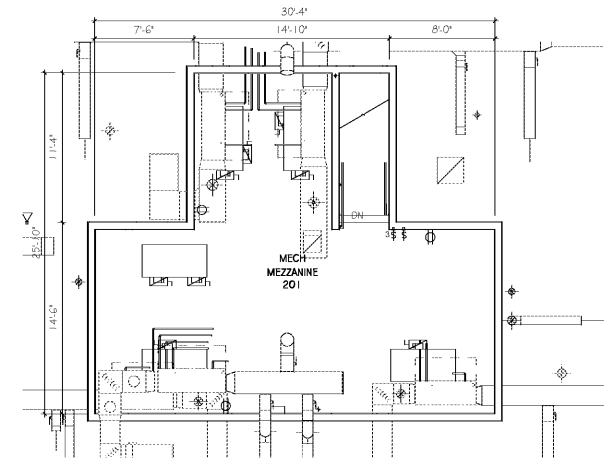


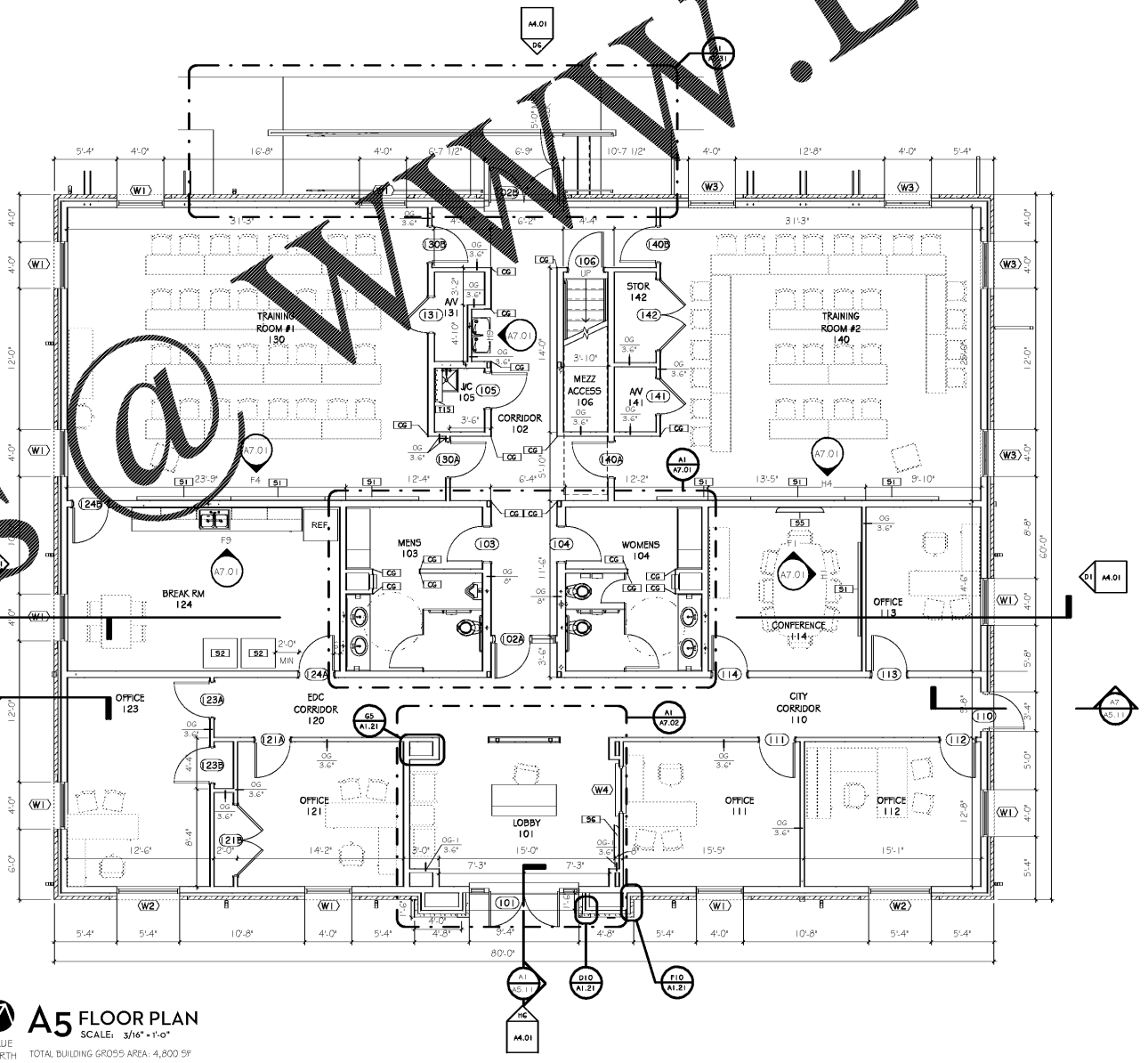
11/30/2017 5:23:24 PM

K
J
H
G
F
E
D
C
B
A

SPECIALTY EQUIPMENT SCHEDULE		
SPECIALTY EQUIPMENT	CORNER GUARD	
S1	SPECIALTY EQUIPMENT	MARKER BOARD N.I.C.
S2	SPECIALTY EQUIPMENT	VENDING MACHINE N.I.C.
S3	SPECIALTY EQUIPMENT	MICROWAVE, N.I.C.
S4	SPECIALTY EQUIPMENT	REFRIGERATOR N.I.C.
S5	SPECIALTY EQUIPMENT	TELEVISION - 50" N.I.C.
S6	SPECIALTY EQUIPMENT	TELEVISION - 32" N.I.C.
S8	SPECIALTY EQUIPMENT	PROJECTOR N.I.C.



G6 MEZZANINE
SCALE: 3/16"=1'-0"



A5 FLOOR PLAN
SCALE: 3/16"=1'-0"
TRUE NORTH
TOTAL BUILDING GROSS AREA - 4,800 SF

GENERAL NOTES

- FURNITURE SHOWN FOR REFERENCE ONLY. NOT IN CONTRACT.
- REFER TO FINISH LEGEND FOR PAINT COLORS CALLED OUT ON REFLECTED CEILING PLANS AND FINISH PLANS.
- UNLESS OTHERWISE NOTED, ALL FLOOR TILE SHALL BE CENTERED IN ROOM.
- COORDINATE CONCRETE SLAB RECESS FOR ENTRANCE MATS WITH STRUCTURAL.
- CONTRACTOR TO REVIEW WITH ARCHITECT, ON SITE, AREAS WITH MULTIPLE CEILING, WALL, AND FLOOR FINISHES BEFORE FINISH WORK BEGINS.
- REFER TO RCP LEGEND ON OVERALL REFLECTED CEILING PLANS FOR RCP ABBREVIATIONS AND FINISHES.
- WALL TILE AND BASE GROUT LINES SHALL ALIGN WITH FLOOR TILE.
- PROVIDE BLOCKING FOR GRAB BARS AND TOILET ACCESSORIES IN RESTROOMS.

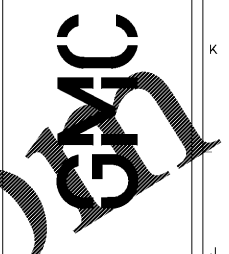
ISSUE DATE	ISSUE	DATE
	BID ISSUE	11/30/2017

DRAWN BY: AUSTIN
CHECKED BY: BO

Oneonta Community Development
Center
100 1st Ave W.
Oneonta, AL 35121
GMC # ABHM170022

FLOOR PLAN
A1.01
sheet of

2701 1st Avenue S
Birmingham, AL 35233
T 205.879.4462
GMCNETWORK.COM



Order Plans @ www.LDILine.com