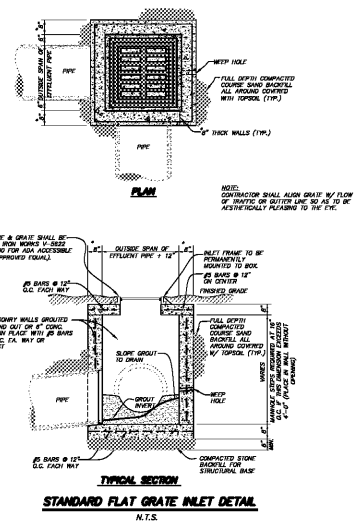


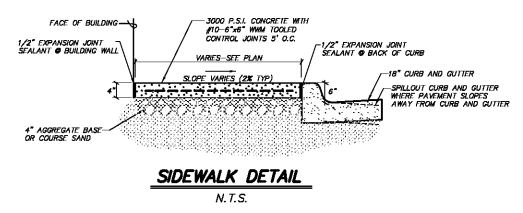
\*Refer to ALDOT Special Drawing No. H.W.-620-36

Pipe Size (Nominal)	Top of Inlet	A	E	F	G	H	R	U	W	Y	X
18"	2'	5'-8 3/4"	5'-3 1/8"	5'-2"	5'-8 1/2"	7'	5'-3 3/4"	5'-8"	5'-8"	5'-4 1/2"	5'-1 1/2"
24"	2 1/2"	6'-1 3/4"	5'-2"	5'-10"	7'-3 1/2"	7'	7'-1 1/8"	6'-8 1/2"	7'-1 1/2"	6'-3 1/2"	5'-11 1/2"
30"	3 1/4"	6'-9 1/4"	5'-2"	5'-10 1/2"	7'	7'	6'-8 1/8"	6'-11 3/4"	5'-8 1/2"	6'-1 1/2"	5'-8 1/2"
36"	3 1/2"	7'-3 3/4"	5'-3 3/8"	5'-8"	7'-5 1/2"	7 1/2"	10'-1 1/4"	7'-1 1/2"	4'-3"	5'-1 1/2"	
42"	4"	8'-10 3/4"	11'-0"	11'-0"	8'-6 1/2"	7 1/2"	11'-6 1/4"	11'-4"	4'-10"	5'-8 1/2"	
48"	4 1/2"	9'-5 3/4"	12'-8"	12'-8"	9'-3 1/2"	7 1/2"	13'-1 1/2"	13'-4"	5'-8"	6'-3 1/2"	
54"	5 1/2"	10'-3 3/4"	13'-10"	13'-10"	10'-2 1/2"	8"	14'-6 1/2"	17'-1 1/2"	6'-1"	6'-10 1/2"	
60"	6"	11'-3 3/4"	15'-8"	15'-8"	11'-2 1/2"	8 1/2"	16'-3 3/4"	19'-9"	6'-8"	7'-8 1/2"	
66"	6 1/2"	12'-3 3/4"	18'-8"	18'-8"	12'-2"	9 1/2"	17'-6 3/4"	21'-0"	7'-3"	8'-1 1/2"	

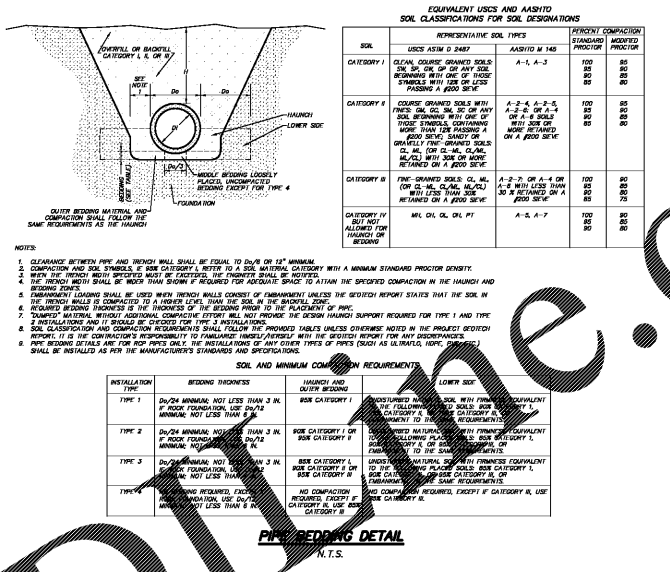
**STANDARD HEADWALL DETAIL**  
N.T.S.



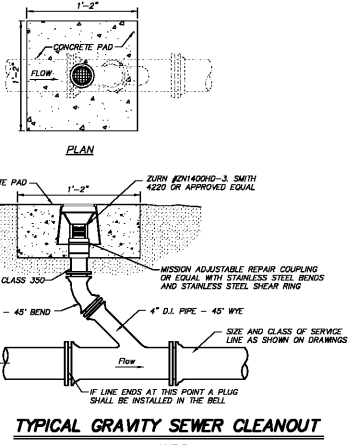
**STANDARD FLAT GRATE INLET DETAIL**  
N.T.S.



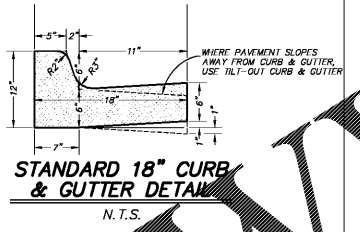
**SIDEWALK DETAIL**  
N.T.S.



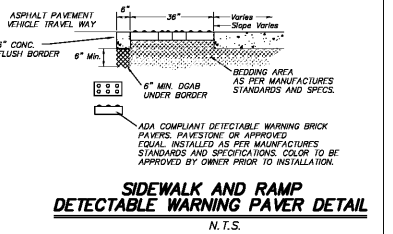
**PIPE BEDDING DETAIL**  
N.T.S.



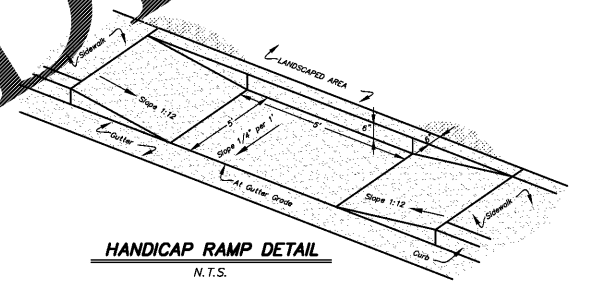
**TYPICAL GRAVITY SEWER CLEANOUT**  
N.T.S.



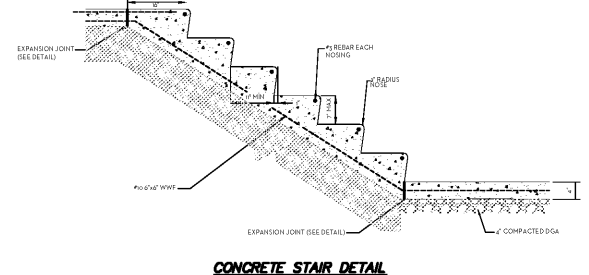
**STANDARD 18" CURB & GUTTER DETAIL**  
N.T.S.



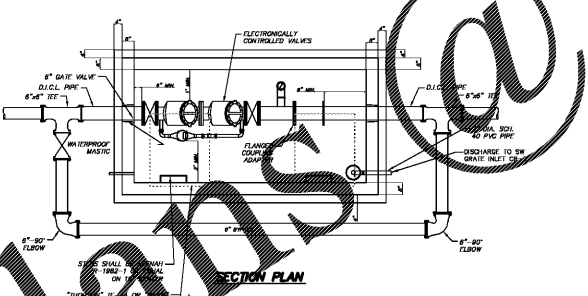
**SIDEWALK AND RAMP DETECTABLE WARNING PAVER DETAIL**  
N.T.S.



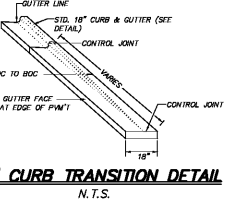
**HANDICAP RAMP DETAIL**  
N.T.S.



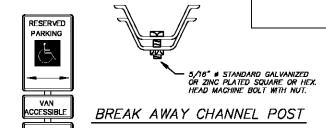
**CONCRETE STAIR DETAIL**  
N.T.S.



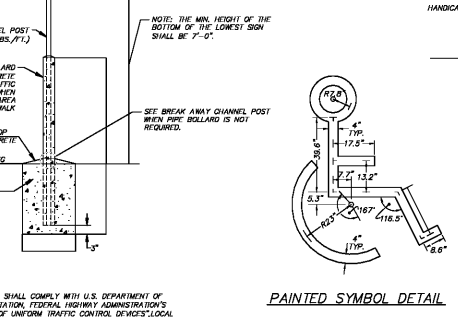
**TYPICAL SECTION STANDARD DUTY ASPHALT PAVEMENT**  
N.T.S.



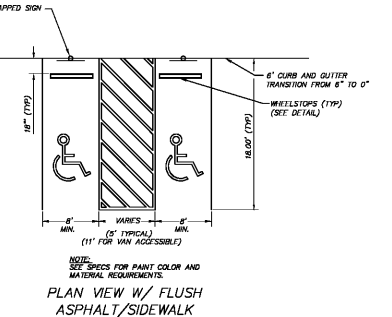
**18" CURB TRANSITION DETAIL**  
N.T.S.



**BREAK AWAY CHANNEL POST**



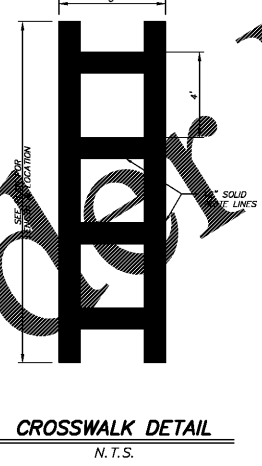
**PAINTED SYMBOL DETAIL**



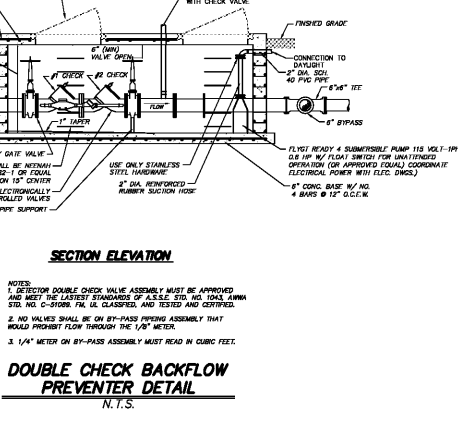
**PLAN VIEW W/ FLUSH ASPHALT/SIDEWALK**



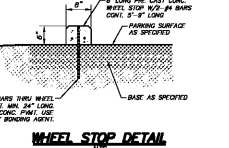
**SITE SIGN BASE & ADA SIGNAGE DETAILS**  
N.T.S.



**CROSSWALK DETAIL**  
N.T.S.



**DOUBLE CHECK BACKFLOW PREVENTER DETAIL**  
N.T.S.



**WHEEL STOP DETAIL**  
N.T.S.

Original Plans

www.gmc.com

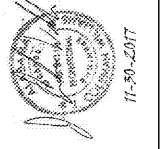
**GMC**  
2701 1st Avenue S  
Birmingham, AL 35233  
T 205.879.4482  
GMCNETWORK.COM

ISSUE DATE	ISSUE	DESCRIPTION
11/30/2017	1	ISSUE FOR BIDDING

Oneonta Community Development  
Center  
100 1st Ave W.  
Oneonta, AL 35211

GMC Project #ABHM170022

DRAWN BY: EG  
CHECKED BY: LKW



**C4.0**  
Standard - 01.000