

ANNOTATION SYMBOLS

ROOM REFERENCE SYMBOL

ROOM NAME
101
FLOOR NUMBER

ROOM REFERENCE SYMBOL
1-...: ROOM NAME
-01: SPACE NUMBER
150 SF: NET SQUARE FOOTAGE

REVISION SYMBOL
USED TO INDICATE SCOPE OF CURRENT REVISION

DOOR SYMBOL
-DOOR NUMBER 101
-DOOR TYPE A
SEE DOOR SCHEDULE AND FLOOR PLANS

WINDOW SYMBOL
-WINDOW TYPE A
SEE EXTERIOR ELEVATIONS AND WINDOW SCHEDULE

LOUVER SYMBOL
-LOUVER TYPE L1
SEE LOUVER SCHEDULE

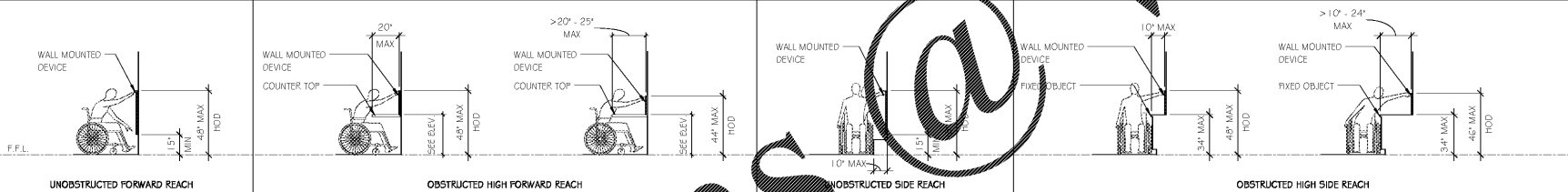
DATUM SYMBOL (ELEVATION MARK)
677.52 - ELEVATION (FT)

ENLARGED DETAIL SYMBOL
DETAIL 1 ON SHEET A101

ABBREVIATIONS AND ACRONYMS

AC	are	CT	ceramic tile	FOS	face of stud	LT GA	light gauge	REQD	required	W	washer/weldneck flange
ACC	accessible	CW	curtain wall	FR	frame (adj), (mg)	LT	light	RET	reclining	WB	wood base
ACI	American Concrete Institute	CY	cubic yard	FRT	face of reinforced treated	LT	light	REV	revised (S), revised	WC	water closet
ACT	acoustical ceiling tile			FT	foot/feet	MATL	material	RH	right hand	WO	wood
ADD	addendum	D	dryer	FTG	footing	MAX	maximum	RJ	recessed joint	WH	water heater
AFB	above finished floor	DBL	double			MC	miscellaneous channel	RM	room	WIN	window
ALT	alternate	DEM	demolish or demolition			MECH	mechanical	RO	rough opening	WP	work point, waterproofing
ALUM	aluminum	DET	detail	GA	gauge	MEZZ	mezzanine	ROW	right of way	WT	weight
APPROX	approximate	DH	double hang	GB	grab bar	MANUF	manufacturer (er)	RTU	roof top unit	W	wall to wall
ARCH	architect (ural)	DIA	diameter	GHM	galvanized hollow metal	MH	multiple	SC	sched concrete	WV	welded wire fabric
ADJ	adjacent	DIAG	diagonal	GI	galvanized iron	MN	minimum	SCHED	scheduled	W/O	without
		DIM	dimension	GWB	gypsum wall board	MO	masonry opening	SQ	square		
BAB	bulled and beveled	DIP	ductile iron pipe	GYP	gypsum	MULL	mullion	S	section		
BAB	back to back	DL	dead load			S	section	S	section		
BC	base of curb	DS	downspout			S	section	S	section		
BO	board	DWG	drawing	H	height	S	section	S	section		
BLOG	building	DF	drinking fountain	HC	handicap	ND	number	S	section		
BLKG	blocking			HM	hollow metal	NOM	normal	S	section		
BM	benchmark	EA	each	HOD	highest operable device	NOS	not to scale	S	section		
BOT	bottom	EP	each face	HORIZ	horizontal	OH	overhead	S	section		
BRS	bearing	EPS	extruded polystyrene	HS	hollow structural steel	OC	on center (s)	S	section		
B5MT	basement	FS	fresh system	HT	height	OCC	occupant (s)	S	section		
BUR	built-up roof	EJ	expansion joint	HVAC	heat/ventilating/air conditioning	OD	outside diameter	S	section		
BOW	bottom of wall	ELEV	elevation/elevator	HW	hardware	OH	opposite hand	S	section		
BW	between	ELEC	electrical			OPG	opening	S	section		
		ENGR	engineer			OPP	opposite	S	section		
		EOP	edge of pavement					S	section		
C	channel	EQS	edge of slab	EO	inside diameter	PJ	precast joint	TELE	telephone		
CAB	cabinet	EQ	equal	EW	each way	IE	invert elevation	TERM	termination		
CAL	caliper	EW	each way	EW	each way	IS	insulation	TAG	longue and groove		
CB	catch basin	EW	each way	EW	each way	IS	insulation	TH	thick (ness)		
CC	center to center	EWC	electric water cooler	EW	each way	IS	insulation	THK	thick (ness)		
CD	core deck	DH	double hang	EWC	electric water cooler	IS	insulation	TO	top of		
CF	cubic foot	DIA	diameter	EW	each way	IS	insulation	TOC	top of curb		
CI	cast iron	DIAG	diagonal	EW	each way	IS	insulation	TOCB	top of curb bar		
CIP	cast iron pipe	DIM	dimension	EW	each way	IS	insulation	TOF	top of footing		
CJ	construction or control joint	DIP	ductile iron pipe	EW	each way	IS	insulation	TOJ	top of joint		
CLS	ceiling	DOL	ductile iron load	EW	each way	IS	insulation	TO'S	top of slab/top of steel		
CLO	closet	FD	floor drain	EW	each way	IS	insulation	TOW	top of wall		
CLR	clear (ance)	FE	fire extinguisher and cabinet	EW	each way	IS	insulation	TYP	typical		
CMF	corrugated metal pipe	FFC	fresh floor elevation	EW	each way	IS	insulation	TZ	terrazzo		
CMU	concrete masonry unit	FFW	fresh face of wall	EW	each way	IS	insulation				
CO	clean out	FHC	fire hose and cabinet	EW	each way	IS	insulation				
COL	column	FF	face to face	EW	each way	IS	insulation				
CONC	concrete	FFL	fresh floor level	EW	each way	IS	insulation				
CONN	connection	FFR	face to face	EW	each way	IS	insulation				
CONST	construction	FLG	flange	EW	each way	IS	insulation				
CONT	continuous or continue	FND	foundation	EW	each way	IS	insulation				
COORD	coordinate	FNO	face of brick	EW	each way	IS	insulation				
CPT	carpet (ed)	FO	face of brick	EW	each way	IS	insulation				
CS	counter/slab	FOC	face of concrete	EW	each way	IS	insulation				
CSMU	calcium silicate masonry unit	FOF	face of fresh	EW	each way	IS	insulation				
		FOM	face of masonry	EW	each way	IS	insulation				

TYPICAL REACH RANGES



MOUNTING HEIGHT NOTES

01. TYPICAL HEIGHTS: MOUNTING HEIGHTS INDICATED HEREIN ARE TYPICAL MOUNTING HEIGHTS FOR DEVICE INDICATED. MOUNTING HEIGHTS FOR SUBMITTED PRODUCTS MAY VARY BY MANUFACTURER. THE GENERAL CONTRACTOR SHALL NOTIFY THE ARCHITECT OF ANY DISCREPANCY BETWEEN THE INDICATED MOUNTING HEIGHT AND THE MANUFACTURER'S RECOMMENDED MOUNTING HEIGHT, PRIOR TO INSTALLATION OF THE DEVICE.

02. THE GENERAL CONTRACTOR SHALL REFER TO PLANS FOR LOCATIONS OF DEVICES SHOWN HEREIN.

03. ADA DEVICES: ALL DEVICES AND FIXTURES NOTED AS "ADA" OR "ACCESSIBLE" SHALL BE INSTALLED IN STRICT ACCORDANCE WITH THE AMERICANS WITH DISABILITIES ACT AND APPLICABLE BUILDING CODES.

04. ELECTRICAL DEVICES: SEE ELECTRICAL DRAWINGS AND SPECIFICATIONS FOR REQUIRED MOUNTING HEIGHT OF ELECTRICAL DEVICES AND FIXTURES. WHERE CONFLICTS EXIST BETWEEN MOUNTING HEIGHTS INDICATED HEREIN AND THE REQUIREMENTS OF THE ELECTRICAL ENGINEER, THE GENERAL CONTRACTOR SHALL NOTIFY THE ARCHITECT PRIOR TO ROUGH-IN.

05. MECHANICAL/PLUMBING DEVICES: SEE MECHANICAL AND PLUMBING DRAWINGS AND SPECIFICATIONS FOR REQUIRED MOUNTING HEIGHT OF MECHANICAL AND PLUMBING DEVICES AND FIXTURES. WHERE CONFLICTS EXIST BETWEEN MOUNTING HEIGHTS INDICATED HEREIN AND THE REQUIREMENTS OF THE MECHANICAL ENGINEER, THE GENERAL CONTRACTOR SHALL NOTIFY THE ARCHITECT PRIOR TO ROUGH-IN.

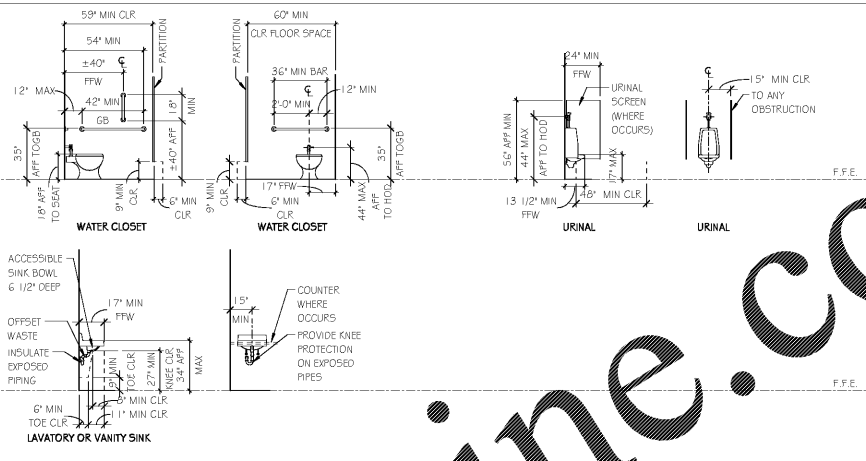
06. INSTALL ADA J AND S COMPLIANT UNDER LAVATORY GUARDS ON ALL EXPOSED SINK PIPING.

07. CONTRACTOR MUST MAINTAIN ON THE JOB SITE A COPY OF THE CURRENT ADAAG STANDARDS AND THE IBC CHAPTER 11 ACCESSIBILITY REQUIREMENTS.

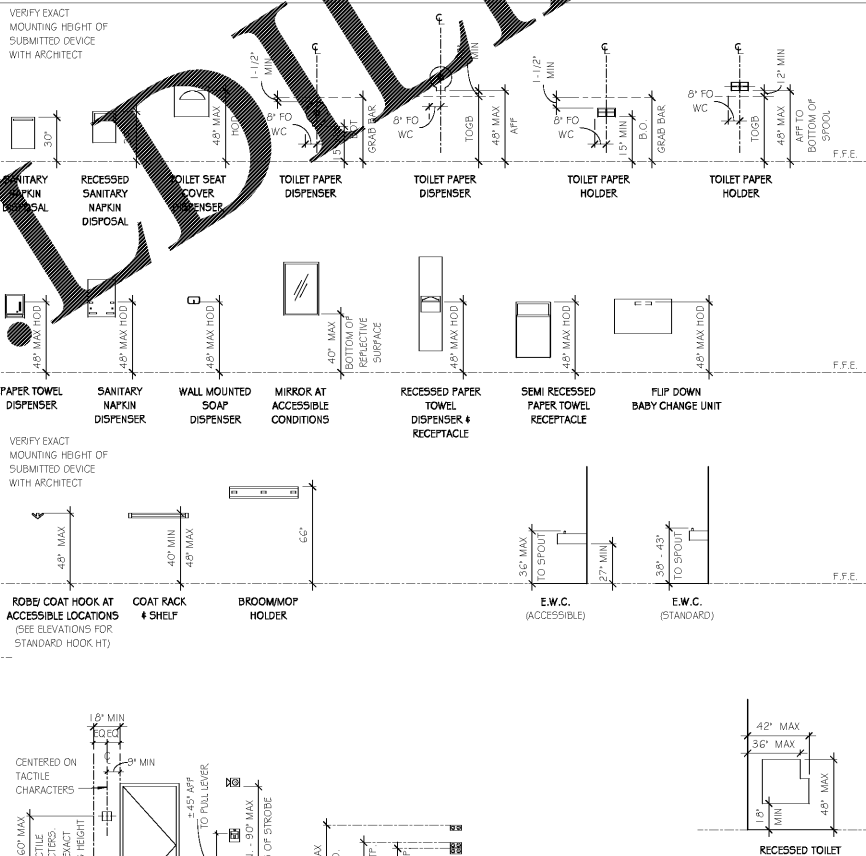
08. DIMENSIONAL DESIGNATIONS OF +/- TO HAVE +/- 1/2" TOLERANCE UNLESS OTHERWISE NOTED.

09. DESIGNATION FOR FINISHED FACE OF WALL (FFW) TO BE TAKEN FROM NEAREST CONTINUOUS SURFACE IN THE PLANE OF THE WALL (I.E. FACE OF FLOOR BASE IF FACE OF BASE EXTENDS BEYOND FACE OF WALL).

TYPICAL ACCESSIBLE PLUMBING DETAILS



TYPICAL ACCESSIBLE MOUNTING HEIGHTS



2701 1st Avenue S
Birmingham, AL 35233
T 205.879.4482
GMCNETWORK.COM

ISSUE DATE	BID ISSUE
	11/30/2017

Oneonta Community Development Center
100 1st Ave W.
Oneonta, AL 35121
GMC # ABHM170022

GENERAL INFORMATION
G1.11
Sheet of