

THE FOLLOWING INFORMATION HAS BEEN TAKEN FROM THE 2010 ADA STANDARDS FOR ACCESSIBLE DESIGN AND THE ICC 117.1-2009. PLEASE REFER TO THESE DOCUMENT FOR REMAINING SECTIONS.

### 302 - FLOOR OR GROUND SURFACES

#### SECTION 302.2 - CARPET

A. CARPET OR CARPET PILE SHALL BE SECURELY ATTACHED AND SHALL HAVE A FIRM CUSHION, PAD, OR BACKING OR NOT CUSHION OR PAD. CARPET OR CARPET PILE SHALL HAVE A LEVEL, LOCK, TEXTURE LOOP, LEVEL CUT PILE, OR LEVEL CUT/JUNCTION PILE. CARPET PILE HEIGHT SHALL BE 1/2" MAXIMUM. EXPOSED EDGES OF CARPETS SHALL BE FASTENED TO FLOOR SURFACES AND SHALL HAVE TRENCH OR ENHANCED LENGTH OF THE EXPOSED EDGE. CARPET EDGE TRIM SHALL COMPLY WITH 303.

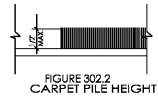


FIGURE 302.2  
CARPET PILE HEIGHT

#### SECTION 302.3 - OPENINGS

OPENINGS IN FLOOR OR GROUND SURFACES SHALL NOT ALLOW PASSAGE OF A SPHERE MORE THAN 1 1/2" DIAMETER (EXCEPT AS ALLOWED IN 407.4.3, 409.4.3, 410.4.3, 412.3.3, 815). ELONGATED OPENINGS SHALL BE PLACED SO THAT THE LONG DIMENSION IS PERPENDICULAR TO THE DOMINANT DIRECTION OF TRAVEL.

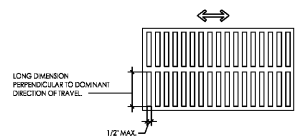


FIGURE 302.3  
ELONGATED OPENINGS IN FLOOR OR GROUND SURFACES

### 303 - CHANGES IN LEVEL

#### SECTION 303.2 - VERTICAL

CHANGES IN LEVEL OF 1/4" HIGH MAXIMUM SHALL BE PERMITTED TO BE VERTICAL.

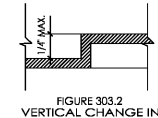


FIGURE 303.2  
VERTICAL CHANGE IN LEVEL

#### SECTION 303.3 - BEVELED

CHANGES IN LEVEL BETWEEN 1/4" HIGH MINIMUM AND 1/2" HIGH MAXIMUM SHALL BE BEVELED WITH A SLOPE NOT STEEPER THAN 1:2. ADVISORY 303.3: BEVELED A CHANGE IN LEVEL OF 1/2" IS PERMITTED TO BE 1/4" VERTICAL PLUS 1/4" BEVELED. HOWEVER, IN NO CASE MAY BEVELED CHANGE IN LEVEL EXCEED 1/2". CHANGES IN LEVEL EXCEEDING 1/2" MUST COMPLY WITH 405 (RAMPS OR CURB RAMPS).

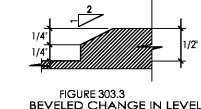
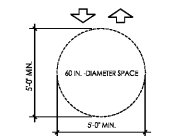


FIGURE 303.3  
BEVELED CHANGE IN LEVEL

### 304 - TURNING SPACE

#### SECTION 304.3.1 - CIRCULAR SPACE

THE TURNING SPACE SHALL BE A SPACE OF 60" DIAMETER MINIMUM. THE SPACE SHALL BE PERMITTED TO INCLUDE ONE AND TWO CLEARANCE COMPLYS WITH 306.



#### SECTION 304.3.2 - T-SHAPED SPACE

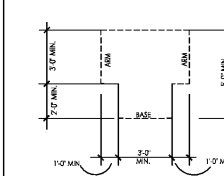


FIGURE 304.3.2  
T-SHAPED TURNING SPACE

### 305 - CLEAR FLOOR OR GROUND SPACE

#### SECTION 305.3 - SIZE

THE CLEAR FLOOR OR GROUND SPACE SHALL BE 30" MINIMUM BY 48" MINIMUM.

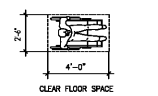


FIGURE 305.3  
CLEAR FLOOR SPACE

#### SECTION 305.5 - POSITION

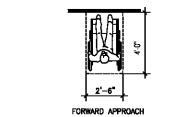


FIGURE 305.5  
POSITION OF CLEAR FLOOR OR GROUND SPACE

#### SECTION 305.7 - MANEUVERING CLEARANCE

305.7.1 FORWARD APPROACH. ALL APPROACHES SHALL BE 36" WIDE MINIMUM WHERE DEPTH EXCEEDS 24" INCHES.

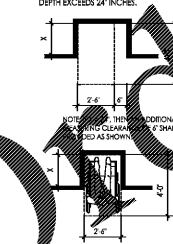


FIGURE 305.7.1  
FORWARD APPROACH

305.7.2 PARALLEL APPROACH. APPROACHES SHALL BE 36" WIDE MINIMUM WHERE DEPTH EXCEEDS 15" INCHES.

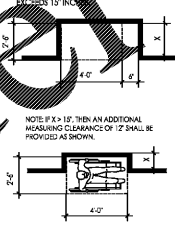


FIGURE 305.7.2  
PARALLEL APPROACH

### 306 - KNEE AND TOE CLEARANCE

#### SECTION 306.1 - GENERAL

WHERE SPACE BENEATH AN ELEMENT IS INCLUDED AS PART OF CLEAR FLOOR OR GROUND SPACE OR TURNING SPACE, THE SPACE SHALL COMPLY WITH 306. ADDITIONAL SPACE SHALL NOT BE PERMITTED BENEATH AN ELEMENT BUT SHALL NOT BE CONSIDERED AS PART OF THE CLEAR FLOOR OR GROUND SPACE OR TURNING SPACE.

ADVISORY 306.1: GENERAL CLEARANCES ARE MEASURED IN RELATION TO THE USABLE CLEAR FLOOR SPACE, NOT NECESSARILY TO THE VERTICAL SUPPORT OF AN ELEMENT. WHEN DETERMINING CLEARANCE UNDER AN OBJECT FOR REQUIRED TURNING OR MANEUVERING SPACE, CARE SHOULD BE TAKEN TO INSURE THE SPACE IS CLEAR OF ANY OBSTRUCTIONS.

#### SECTION 306.2 - TOE CLEARANCE

##### SECTION 306.2.1 - GENERAL

SPACE UNDER AN ELEMENT BETWEEN THE FINISH FLOOR OR GROUND AND 9" INCHES ABOVE THE FINISH FLOOR OR GROUND SHALL BE CONSIDERED TOE CLEARANCE AND SHALL COMPLY WITH 306.2.

##### SECTION 306.2.2 - MAXIMUM DEPTH

TOE CLEARANCE SHALL EXTEND 25" INCHES MAXIMUM UNDER AN ELEMENT.

##### SECTION 306.2.3 - MINIMUM REQUIRED DEPTH

WHERE TOE CLEARANCE IS REQUIRED AT AN ELEMENT AS PART OF A CLEAR FLOOR SPACE, THE TOE CLEARANCE SHALL EXTEND 17" INCHES MINIMUM UNDER THE ELEMENT.

##### SECTION 306.2.4 - ADDITIONAL CLEARANCE

SPACE EXTENDING GREATER THAN 6" INCHES BEYOND THE AVAILABLE KNEE CLEARANCE AT 9" INCHES ABOVE THE FINISH FLOOR OR GROUND SHALL NOT BE CONSIDERED TOE CLEARANCE.

##### SECTION 306.2.5 - WIDTH

TOE CLEARANCE SHALL BE 30" INCHES WIDE MINIMUM.

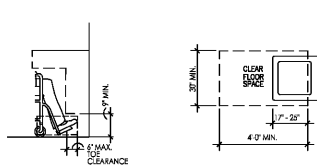


FIGURE 306.2  
TOE CLEARANCE

#### SECTION 306.3 - KNEE CLEARANCE

##### SECTION 306.3.1 - GENERAL

SPACE UNDER AN ELEMENT BETWEEN 9" INCHES AND 27" INCHES ABOVE THE FINISH FLOOR OR GROUND SHALL BE CONSIDERED KNEE CLEARANCE AND SHALL COMPLY WITH 306.3.

##### SECTION 306.3.2 - MAXIMUM DEPTH

KNEE CLEARANCE SHALL EXTEND 25" INCHES MAXIMUM UNDER AN ELEMENT AT 9" INCHES ABOVE THE FINISH FLOOR OR GROUND.

##### SECTION 306.3.3 - MINIMUM REQUIRED DEPTH

WHERE KNEE CLEARANCE IS REQUIRED UNDER AN ELEMENT AS PART OF A CLEAR FLOOR SPACE, THE KNEE CLEARANCE SHALL BE 11" INCHES DEEP MINIMUM AT 9" INCHES ABOVE THE FINISH FLOOR OR GROUND, AND 9" INCHES DEEP MINIMUM AT 27" INCHES ABOVE THE FINISH FLOOR OR GROUND.

##### SECTION 306.3.4 - CLEARANCE REDUCTION

BETWEEN 9" INCHES AND 27" INCHES ABOVE THE FINISH FLOOR OR GROUND, THE KNEE CLEARANCE SHALL BE PERMITTED TO REDUCE AT A RATE OF 1" INCHES IN DEPTH FOR 6" INCHES IN HEIGHT.

##### SECTION 306.3.5 - WIDTH

KNEE CLEARANCE SHALL BE 30" INCHES WIDE MINIMUM.

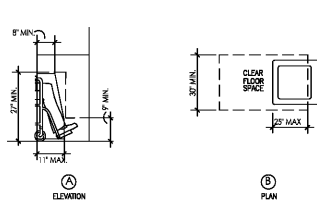


FIGURE 306.3  
KNEE CLEARANCE

### 307 - PROTRUDING OBJECTS

OBJECTS WITH LEADING EDGES BETWEEN 27" AND NOT MORE THAN 80" ABOVE THE FINISH FLOOR OR GROUND SHALL PROTRUDE A MAXIMUM HORIZONTALLY INTO THE CIRCULATION PATH.

EXCEPTION: HANDRAILS SHALL BE PERMITTED TO PROTRUDE 4" TO 1/2" MAXIMUM.

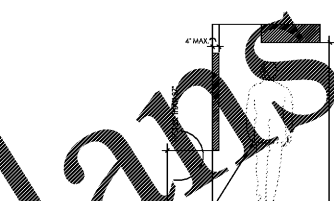


FIGURE 307.2  
LIMITS OF PROTRUDING OBJECTS

#### SECTION 307.2 - POST-MOUNTED OBJECTS

POST-MOUNTED OBJECTS MOUNTED ON POSTS OR PYLONS SHALL OVERHANG CIRCULATION PATHS 12" MAX. WHEN LOCATED 27" MIN. AND 80" MAX. ABOVE THE FINISH FLOOR OR GROUND, WHERE A SIGN OR OTHER OBSTRUCTION IS MOUNTED BETWEEN POSTS OR PYLONS AND THE CLEAR DISTANCE BETWEEN THE POSTS OR PYLONS IS GREATER THAN 17", THE LEADING EDGE OF SUCH SIGN OR OBSTRUCTION SHALL BE 27" MAX. OR 80" MIN. ABOVE THE FINISH FLOOR OR GROUND.

EXCEPTION: THE SLOPING PORTIONS OF HANDRAILS SERVING STAIRS AND RAMPS SHALL NOT BE REQUIRED TO COMPLY WITH 307.3.

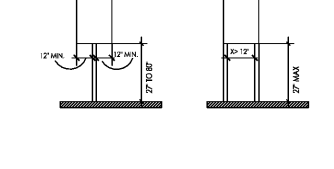


FIGURE 307.3  
POST-MOUNTED PROTRUDING OBJECTS

### 307 - PROTRUDING OBJECTS, CONTINUED

#### SECTION 307.4 - VERTICAL CLEARANCE

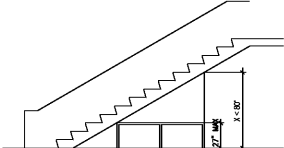


FIGURE 307.4  
VERTICAL CLEARANCE

### 308 - REACH RANGES

#### SECTION 308.1 - GENERAL

REACH RANGES SHALL COMPLY WITH 308. ADVISORY 308.1: GENERAL. THE FOLLOWING TABLE PROVIDES GUIDANCE ON REACH RANGES FOR CHILDREN ACCORDING TO AGE WHERE BUILDING ELEMENTS SUCH AS COAT HOOKS, LOCKERS, OR OPERABLE PARTS ARE DESIGNED FOR USE PRIMARILY BY CHILDREN. THESE DIMENSIONS APPLY TO EITHER FORWARD OR SIDE REACH. ACCESSIBLE ELEMENTS AND OPERABLE PARTS DESIGNED FOR ADULT USE OR CHILDREN OVER AGE 12 CAN BE LOCATED OUTSIDE THESE RANGES BUT MUST BE WITHIN THE ADULT REACH RANGES REQUIRED BY 308.

CHILDREN'S REACH RANGES			
FORWARD OR SIDE REACH	AGES 3 AND 4	AGES 5 THRU 8	AGES 9 THRU 12
HIGH (MAX)	36 in	40 in	44 in
LOW (MAX)	20 in	18 in	16 in

#### SECTION 308.2 - FORWARD REACH

##### SECTION 308.2.1 - UNOBSTRUCTED

WHERE A FORWARD REACH IS UNOBSTRUCTED, THE HIGH FORWARD REACH SHALL BE 48" MAX. AND THE LOW REACH SHALL BE 15" MIN ABOVE THE FINISH FLOOR OR GROUND.

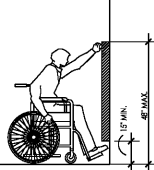


FIGURE 308.2.1  
UNOBSTRUCTED FORWARD REACH

##### SECTION 308.2.2 - OBSTRUCTED HIGH FORWARD REACH

WHERE A FORWARD REACH IS OVER AN OBSTRUCTION, THE CLEAR FLOOR SPACE SHALL BE EXTENDED BEYOND THE OBSTRUCTION A DISTANCE NOT LESS THAN THE REQUIRED REACH DEPTH OVER THE OBSTRUCTION. THE HIGH FORWARD REACH SHALL BE 48" MAX. WHERE THE REACH DEPTH IS 30" MAX. WHERE THE REACH DEPTH EXCEEDS 30", THE HIGH FORWARD REACH SHALL BE 48" MAX. AND THE REACH DEPTH SHALL BE 30" MAX.

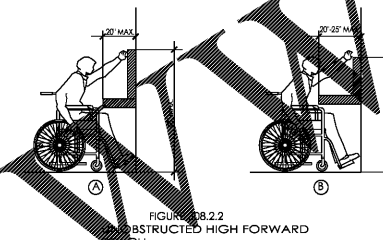


FIGURE 308.2.2  
OBSTRUCTED HIGH FORWARD REACH

#### SECTION 308.3 - SIDE REACH

##### SECTION 308.3.1 - UNOBSTRUCTED

WHERE A CLEAR FLOOR OR GROUND SPACE ALLOWS A PARALLEL APPROACH TO AN ELEMENT AND THE SIDE REACH IS UNOBSTRUCTED, THE HIGH SIDE REACH SHALL BE 48" MAX. AND THE LOW SIDE REACH SHALL BE 15" MIN ABOVE THE FINISH FLOOR OR GROUND.

EXCEPTION 1: AN OBSTRUCTION SHALL BE PERMITTED BETWEEN THE CLEAR FLOOR OR GROUND SPACE AND THE ELEMENT WHERE THE DEPTH OF THE OBSTRUCTION IS 10" MAX.

EXCEPTION 2: OPERABLE PARTS OF FULL DISPENSERS SHALL BE PERMITTED TO BE 54" MAX. MEASURED FROM THE SURFACE OF THE PERPENDICULAR WAY WHERE FULL DISPENSERS ARE INSTALLED ON EXISTING CURBS.

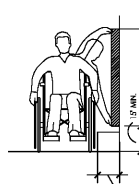


FIGURE 308.3.1  
UNOBSTRUCTED SIDE REACH

##### SECTION 308.3.2 - OBSTRUCTED HIGH SIDE REACH

WHERE A CLEAR FLOOR OR GROUND SPACE ALLOWS A PARALLEL APPROACH TO AN ELEMENT AND THE HIGH SIDE REACH IS OVER AN OBSTRUCTION, THE HIGH SIDE REACH SHALL BE 48" MAX. AND THE DEPTH OF THE OBSTRUCTION SHALL BE 10" MAX. THE HIGH SIDE REACH SHALL BE 48" MAX. FOR A REACH DEPTH OF 10" MAX. WHERE THE REACH DEPTH EXCEEDS 10", THE HIGH SIDE REACH SHALL BE 48" MAX. FOR A REACH DEPTH OF 24" MAX.

EXCEPTION 1: THE TOP OF WASHING MACHINES AND CLOTHES DRYERS SHALL BE PERMITTED TO BE 36" MAXIMUM ABOVE THE FINISH FLOOR.

EXCEPTION 2: OPERABLE PARTS OF FULL DISPENSERS SHALL BE PERMITTED TO BE 54" MAX. MEASURED FROM THE SURFACE OF THE VEHICULAR WAY WHERE FULL DISPENSERS ARE INSTALLED ON EXISTING CURBS.

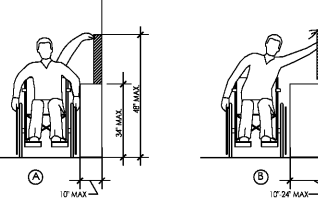


FIGURE 308.3.2  
OBSTRUCTED HIGH SIDE REACH

### 309 - OPERABLE PARTS

#### SECTION 309.2 - CLEAR FLOOR SPACE

A CLEAR FLOOR OR GROUND SPACE COMPLYING WITH 305 SHALL BE PROVIDED.

#### SECTION 309.4 - OPERATION

OPERABLE PARTS SHALL BE OPERABLE WITH ONE HAND AND SHALL NOT REQUIRE TIGHT GRASPING, MACHING, OR TWISTING OF THE WRIST. THE FORCE REQUIRED TO ACTIVATE OPERABLE PARTS SHALL BE 5 POUNDS MAX.

### 402-403 - ACCESSIBLE ROUTES

#### SECTION 402.2 - COMPONENTS

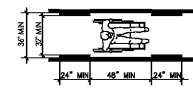
ACCESSIBLE ROUTES SHALL CONSIST OF ONE OR MORE OF THE FOLLOWING COMPONENTS: WALKING SURFACES WITH A RUNNING SLOPE NOT STEEPER THAN 1:20; DOORWAYS, RAMPS, CURB RAMPS INCLUDING THE FLARED SIDES, ELEVATORS, AND PLATFORM LIFTS. ALL COMPONENTS OF AN ACCESSIBLE ROUTE SHALL COMPLY WITH THE APPLICABLE REQUIREMENTS OF CHAPTER 4.

#### SECTION 403.3 - SLOPE

THE RUNNING SLOPE OF WALKING SURFACES SHALL NOT BE STEEPER THAN 1:20. THE CROSS SLOPE OF WALKING SURFACES SHALL NOT BE STEEPER THAN 1:48.

#### SECTION 403.5.1 - CLEAR WIDTH

EXCEPT AS PROVIDED IN 403.2 AND 403.3, THE CLEAR WIDTH OF WALKING SURFACES SHALL BE 36" MINIMUM. EXCEPTION: THE CLEAR WIDTH SHALL BE PERMITTED TO BE REDUCED TO 32" MIN FOR A LENGTH OF 24" MAX. PROVIDED THAT REDUCED WIDTH SEGMENTS ARE SEPARATED BY SEGMENTS THAT ARE 48" LONG MIN. AND 36" WIDE MIN.



#### SECTION 403.5.3 - PASSING SPACES

AN ACCESSIBLE ROUTE WITH A CLEAR WIDTH LESS THAN 67" SHALL PROVIDE PASSING SPACES AT INTERVALS OF 17' MAX. PASSING SPACES SHALL BE EITHER: A SPACE 67" MIN. BY 67" MIN.; OR, AN INTERSECTION OF TWO WALKING SURFACES PROVIDING A SHARED SPACE COMPLYING WITH 305.3.2 WHERE THE BASE AND ANGLE OF THE SHARED SPACE SHALL BE 45 DEGREES BEYOND THE INTERSECTION.

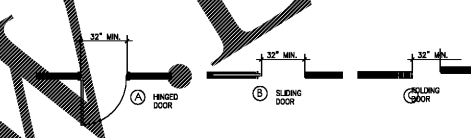
### 404 - DOORS, DOORWAYS AND GATES

#### SECTION 404.2.2 - DOUBLE LEAF DOORS AND GATES

AT LEAST ONE OF THE ACTIVE LEAVES OF DOORWAYS WITH TWO LEAVES SHALL COMPLY WITH 404.2.3 AND 404.2.4.

#### SECTION 404.2.3 - CLEAR WIDTH

DOOR OPENINGS SHALL PROVIDE A CLEAR WIDTH OF 32" MIN. CLEAR OPENINGS IN DOORWAYS WITH SLIDING DOORS SHALL BE MEASURED BETWEEN THE TOP OF THE DOOR AND THE TOP OF THE OBSTRUCTION. OPENINGS MORE THAN 24" DEEP SHALL PROVIDE A CLEAR OPENING OF 30" INCHES MIN. THERE SHALL BE NO PROTRUSIONS INTO THE REQUIRED CLEAR OPENING WITH LOWER THAN 48" ABOVE THE FINISH FLOOR OR GROUND. THE REQUIRED CLEAR WIDTH SHALL BE PERMITTED TO REDUCE TO 28" MIN. WHERE THE DEPTH OF THE CLEARING IS 48" OR LESS. EXCEPTIONS: 1. ALTERNATE LOCATION OF 60" MAX. INTO THE REQUIRED CLEAR WIDTH SHALL BE PERMITTED FOR LATCH SIDE STOP. 2. DOOR CLOSERS AND DOOR STOP SHALL BE PERMITTED TO BE 12" MIN. ABOVE FINISH FLOOR OR GROUND.

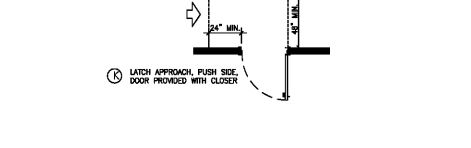
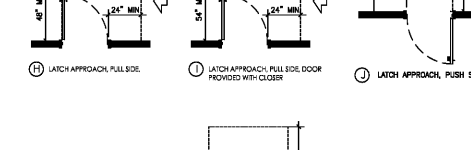
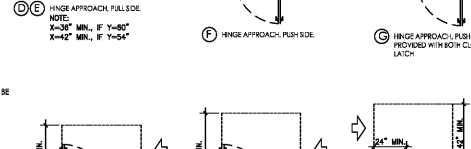
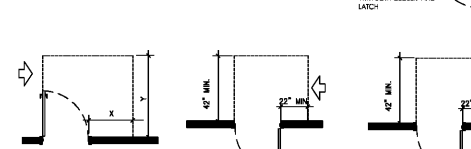
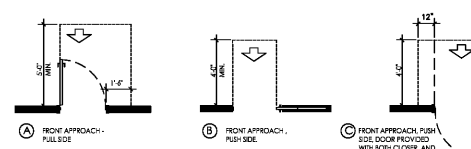


#### SECTION 404.2.4 - MANEUVERING CLEARANCES

MINIMUM MANEUVERING CLEARANCES AT DOORS AND GATES SHALL COMPLY WITH 404.2.4. MANEUVERING CLEARANCES SHALL EXTEND THE FULL WIDTH OF THE DOORWAY AND THE REQUIRED LATCH SIDE OR HINGE SIDE CLEARANCE. EXCEPTION: ENTRY DOORS TO HOSPITAL PATIENT ROOMS SHALL NOT BE REQUIRED TO PROVIDE THE CLEARANCE BEYOND THE LATCH SIDE OF THE DOOR.

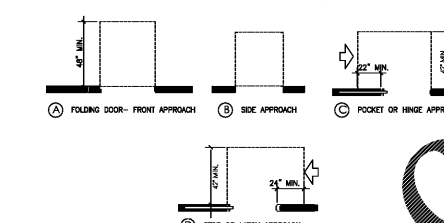
#### SECTION 404.2.4.1 - MANEUVERING CLEARANCE

APPROACH DIRECTION	DOOR SIDE	PERPENDICULAR TO DOORWAY	PARALLEL TO DOORWAY
FROM FRONT	PULL	60"	18"
FROM FRONT	PUSH	48"	0"
FROM HINGE SIDE	PULL	60"	36"
FROM HINGE SIDE	PUSH	54"	42"
FROM HINGE SIDE	PULL	42"	22"
FROM LATCH SIDE	PULL	48"	24"
FROM LATCH SIDE	PUSH	42"	24"



### 404 - DOORS, DOORWAYS AND GATES, CONTINUED

#### SECTION 404.2.4.2 - DOORWAYS WITHOUT DOORS OR GATES, AND FOLDING DOORS

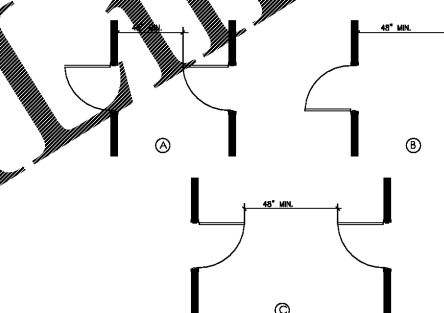


#### SECTION 404.2.5 - THRESHOLDS

THRESHOLDS, IF PROVIDED AT DOORWAYS, SHALL BE A MAX. RISED THRESHOLD AND CHANGES IN LEVEL AT DOORWAYS SHALL COMPLY WITH 303.2.

#### SECTION 404.2.6 - DOORS, GATES AND GATES IN PART

THE DISTANCE BETWEEN THE TOP OF THE PROVIDED DOOR OR GATE AND ANY OTHER OBJECTS SHALL BE 48" MINIMUM PLUS THE WIDTH OF THE DOOR OR GATE OPENING.



#### SECTION 404.2.7 - DOOR AND GATE HARDWARE

HANDLES, PULLS, LATCHES, LOCKS, AND OTHER OPERATING PARTS ON DOORS AND GATES SHALL COMPLY WITH 309.4. OPERABLE PARTS OF SUCH HARDWARE SHALL BE 36" MIN. AND 48" MAX. ABOVE THE FINISH FLOOR OR GROUND. WHERE SLIDING DOORS ARE IN THE FULLY OPEN POSITION, OPERATING HARDWARE SHALL BE EXPOSED AND USABLE FROM BOTH SIDES.

#### SECTION 404.2.8.1 - DOOR AND GATE CLOSERS

DOOR CLOSERS AND GATE CLOSERS SHALL BE ADJUSTED SO THAT FROM AN OPEN POSITION OF 90 DEGREES, THE TIME REQUIRED TO MOVE THE DOOR TO A POSITION OF 12 DEGREES FROM THE LATCH IS 5 SECONDS MINIMUM.

#### SECTION 404.2.9 - DOOR OPENING FORCE

THE DOORS SHALL HAVE A MINIMUM SPRING FORCE ALLOWABLE BY THE APPROPRIATE ADMINISTRATIVE AUTHORITY. THE FORCE FOR PUSHING OR PULLING OPEN A DOOR OR GATE OTHER THAN FRIE DOORS SHALL BE AS FOLLOWS:

- INTERIOR HINGED DOORS AND GATES: 5 POUNDS MAX.
- SLIDING OR FOLDING DOORS: 5 POUNDS MAX.

THESE FORCES DO NOT APPLY TO THE FORCES REQUIRED TO RETRACT LATCH BOLTS OR DISengage OTHER DEVICES THAT HOLD THE DOOR IN A CLOSED POSITION.

#### SECTION 404.2.11 - VISION LIGHTS

DOORS, GATES, AND SIDE LIGHTS ADJACENT TO DOORS OR GATES, CONTAINING ONE OR MORE GLAZING PANELS THAT PERMIT VIEWING THROUGH THE PANELS SHALL HAVE THE BOTTOM OF AT LEAST ONE GLAZED PANEL LOCATED 48" MAXIMUM ABOVE THE FINISH FLOOR.

### 405 - RAMPS

#### SECTION 405.1 - GENERAL

GENERAL: RAMPS ON ACCESSIBLE ROUTES SHALL COMPLY WITH 405.

#### SECTION 405.2 SLOPE

RAMPS RUNS SHALL HAVE A RUNNING SLOPE NOT STEEPER THAN 1:20. EXCEPTION: IN EXISTING SITES, BUILDINGS, AND FACILITIES, RAMPS SHALL BE PERMITTED TO HAVE RUNNING SLOPES STEEPER THAN 1:20 COMPLYING WITH TABLE 405.