

**FIELD VERIFY ALL CONDITIONS**

DESIGN DRAWINGS ARE SCHEMATIC. THIS CONTRACTOR SHALL VISIT THE SITE PRIOR TO BIDDING OR AWARD OF CONTRACT TO INSPECT EXISTING FIELD CONDITIONS. THIS CONTRACT SHALL INCLUDE ALL LABOR AND MATERIALS NECESSARY FOR FIELD MODIFICATIONS DUE TO EXISTING CONDITIONS.

THE CONTRACTOR SHALL CONTACT THE ARCHITECT, ENGINEER OR OWNER PRIOR TO BIDDING FOR INTERPRETATIONS AND CLARIFICATIONS OF THE DESIGN AND INCLUDE IN HIS BID ALL COSTS TO MEET THE DESIGN INTENT. CLARIFICATIONS MADE BY THE ARCHITECT, ENGINEER OR OWNER AFTER BIDDING WILL BE FINAL AND SHALL BE IMPLEMENTED AT CONTRACTORS' COST.

BIDDING CONTRACTORS SHALL HAVE A WORKING KNOWLEDGE OF LOCAL CODES AND ORDINANCES AND SHALL INCLUDE IN THEIR BIDS THE COSTS FOR ALL WORK INSTALLED IN STRICT ACCORDANCE WITH GOVERNING CODES, THE PLANS AND SPECIFICATIONS NOT WITHSTANDING. THE CONTRACTOR SHALL ALERT ARCHITECT, ENGINEER OR OWNER OF ANY APPARENT DISCREPANCIES BETWEEN GOVERNING CODES AND DESIGN INTENT.

**IMPORTANT FURNITURE NOTE**

MILLWORK BACKBOARD FURNITURE SHALL BE SHIPPED WITH LED STRIP LIGHTING AND THE CORRESPONDING DRIVERS FOR POWER. ALL PERIMETER MILLWORK SHALL HAVE LED LIGHTING RUNNING ALONG THE BOTTOM, BEHIND THE BACKBOARD. LED LIGHTING DRIVERS SHALL PLUG INTO THE RECEPTACLES.

INSTALL LED STRIP LIGHTING AND DRIVERS BEHIND BACKBOARD IN ACCESSIBLE LOCATION. COORDINATE ALL REQUIREMENTS WITH PROJECT MANAGER PRIOR TO INSTALLATION.

**KEYED NOTES**

- E01 PROVIDE JUNCTION BOX AND PENDANT MOUNT WITHIN 24"-30" OF ENTRY, AND 3/4" CONDUIT WITH PULL WIRE BACK TO TELEPHONE BOARD FOR SHOPPER TRACK. COORDINATE WITH VENDOR FOR EXACT CABLING REQUIREMENTS. SHOPPER TRACK INSTALLED AT 10'-0" AFF ON CENTER OF TELEPHONE BOARD.
- E02 PROVIDE RECEPTACLE HORIZONTALLY ON WALL ABOVE GLAZING OR ON CEILING. MOUNT WITHIN 18" OF TOP OF GLAZING. RECEPTACLE AND COVER PLATE COLORS SHALL MATCH ADJACENT FINISHES. COORDINATE WITH ARCHITECTURAL SHEETS FOR ADDITIONAL INFORMATION.
- E03 PROVIDE 3/4" CONDUIT FROM SENSORMATIC EQUIPMENT TO EACH CORNER OF THE TOP OF THE ENTRY DOOR JAMB FOR SENSORMATIC SYSTEM. COORDINATE WITH VENDOR FOR EXACT REQUIREMENTS BASED ON FIELD CONDITIONS.
- E04 PROVIDE DUPLEX ON DEDICATED, LOCKED CIRCUIT AND (1) JUNCTION BOX FOR SENSORMATIC POWER EQUIPMENT IN FIRE RATED ENCLOSURE. PROVIDE ACCESS PANEL AS REQUIRED.
- E05 PROVIDE (2) JUNCTION BOXES, (1) DEDICATED BRANCH CIRCUIT AND (1) 3/4" CONDUIT WITH PULL STRING BACK TO TELEPHONE BOARD FOR WIRELESS BOOSTER. PROVIDE ACCESS PANEL AS REQUIRED.
- E06 PROVIDE DOOR BUZZER/BELL AS SHOWN. REUSE DOOR BUZZER SYSTEM IF ALREADY EXISTING. COORDINATE WITH PROJECT MANAGER FOR DOOR BUZZER SPECIFICATIONS.
- E07 PROVIDE DEVICES CONCEALED WITHIN MILLWORK AS SHOWN. PROVIDE FLEXIBLE CONNECTIONS HIDDEN WITHIN MILLWORK. PROVIDE DATA DEVICES IN A DOUBLE-GANG BOX. REFER TO ELEVATIONS ON SHEET LV.1 FOR MORE INFORMATION.
- E08 PROVIDE (1) 2" CONDUIT AND (1) 1" CONDUIT BELOW SLAB (1" FOR POWER, 2" FOR DATA). PROVIDE UP TO (24) DATA OR TELEPHONE CABLES IN SINGLE CONDUIT. TRENCH/CORE DRILL AS REQUIRED TO ROUTE CONDUIT UNDER SLAB TO NEAREST WALL.
- E09 ROUTE (1) 2" CONDUIT WITH PULLSTRINGS UP FULL HEIGHT WALL, ABOVE CEILING TO TELEPHONE BOARD.
- E11 JUNCTION BOX FOR SPEAKER CABLES AT 90° AFF. COORDINATE WITH AUDIO VENDOR FOR EXACT REQUIREMENTS.
- E12 PROVIDE (2) 2" CONDUITS FROM JUNCTION BOXES IN WALL AT 24" AFF TO CEILING SPACE ABOVE FOR SECURITY CAMERA CABLES. COORDINATE WITH SECURITY VENDOR FOR EXACT REQUIREMENTS.
- E13 CONNECT NEW EXHAUST FAN TO CIRCUIT SERVING LIGHTING IN THIS ROOM. INTERLOCK WITH OCCUPANCY SENSOR CONTROL.
- E14 INSTALL OWNER FURNISHED TRACKKEEPER TK16 CURRENT LIMITER PANEL. PROVIDE ALL REQUIRED WIRING.
- E16 RECEPTACLE SHALL BE INSTALLED BELOW MOUNTING BRACKET, BUT BEHIND WALL PANEL IN ACCESSIBLE LOCATION. COORDINATE INSTALLATION WITH ARCHITECTURAL ELEVATIONS AND FIXTURE VENDOR PRIOR TO ROUGH-IN.
- E17 COORDINATE LOCATION OF RECEPTACLE WITH VENDOR PRIOR TO ROUGH-IN.
- E19 REFER TO DETAIL 5 ON SHEET LV.1 FOR ADDITIONAL INFORMATION.
- E20 REFER TO DETAIL 8 ON SHEET LV.1 FOR ADDITIONAL INFORMATION.

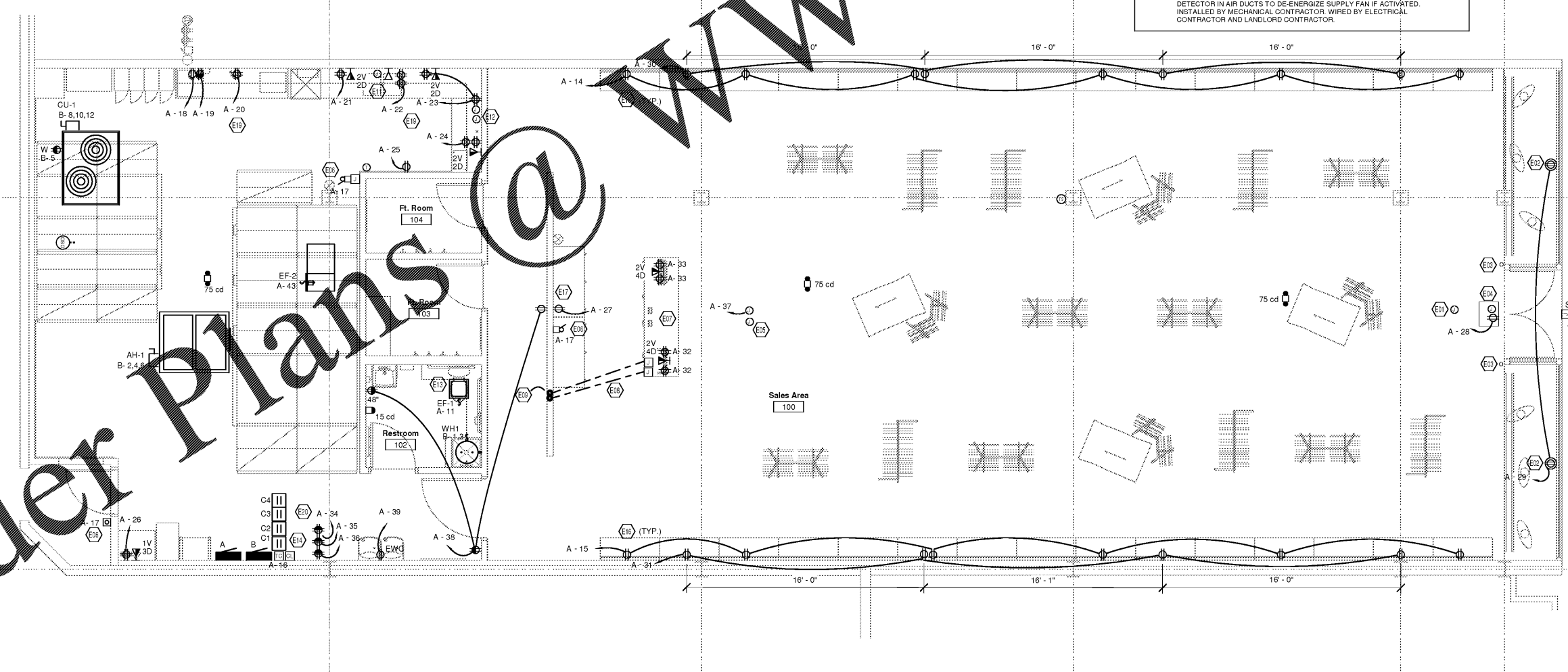
**GENERAL POWER PLAN NOTES**

- A. CIRCUITING WORK SHOWN ON DRAWINGS IS FOR SCHEMATIC GENERAL GRAPHIC REPRESENTATION ONLY. DETERMINE SPECIFICS IN FIELD (POINT-TO-POINT ROUTING, HOME-RUN LOCATIONS, METHODS OF CONCEALMENT, ETC.). REFER TO EQUIPMENT COORDINATION SCHEDULES FOR REQUIREMENTS ASSOCIATED WITH EQUIPMENT. COORDINATION OF TELEPHONE, ANTENNA, WIRELESS DEVICES AND EQUIPMENT, ETC. COORDINATE LOCATIONS AND REQUIREMENTS FOR ALL EQUIPMENT WITH RESPECTIVE EQUIPMENT SUPPLIERS AND INSTALLERS PRIOR TO ORDERING ANY RELATED MATERIALS OR COMMENCING WITH ANY RELATED ROUGH-IN WORK.
- B. REFER TO ARCHITECTURAL ELEVATIONS FOR INTENDED LOCATIONS AND MOUNTING HEIGHTS FOR EQUIPMENT AND OUTLETS, ETC. PRIOR TO COMMENCING WITH ANY RELATED ROUGH-IN WORK.
- C. PROVIDE RACEWAY AND PATHWAY SYSTEMS FOR ALL TECHNOLOGY WORK. INCLUDE OUTLET BOXES, CONDUITS, RACEWAYS, HOOKS, CABLE TRAY, ETC. AS REQUIRED FOR COMPLETE OPERATIONAL SYSTEMS. COORDINATE ALL RELATED WORK (INCLUDING ASSOCIATED POWER) WITH OWNER (INCLUDING OWNER'S PROJECT MANAGER), FIELD CONDITIONS, FURNITURE ASSOCIATED HEIGHTS, TECHNOLOGY INSTALLERS AND WORK OF OTHER TRADES AND SUPPLIERS/INSTALLERS AS APPLICABLE. TERMINATE ALL CONDUITS FROM OUTLET BOXES TO NEAREST ACCESSIBLE CEILING CAVITY, OR TO OVERHEAD STRUCTURAL SPACE FOR AREAS WITH NO CEILINGS. PROVIDE CONDUITS WITH SWEEP BENDS, PULL STRINGS, PLASTIC BUSHINGS AND IDENTIFICATION AT OVERHEAD ENDS. PROVIDE BLANK WALL PLATES TO MATCH WIRING DEVICE WALL PLATES.
- D. INSTALL RECEPTACLE(S) INDICATED ABOVE STOREFRONT WINDOWS WITHIN 18 INCHES OF THE TOP OF STOREFRONT WINDOWS, AND INSTALL COMPLIANT WITH NEC, INCLUDING ARTICLE 210.62.
- E. PROVIDE GFCI PROTECTION FOR PERSONNEL FOR ALL SINGLE-PHASE RECEPTACLES RATED 150 VOLTS TO GROUND OR LESS, 50 AMPERES OR LESS AND THREE-PHASE RECEPTACLES RATED 150 VOLTS TO GROUND OR LESS, 100 AMPERES OR LESS INSTALLED IN/ON THE FOLLOWING LOCATIONS/APPLICATIONS: BATHROOMS, KITCHENS, RESTROOMS, LOCKER ROOMS, SINKS (WHERE RECEPTACLES ARE INSTALLED ABOVE THE TOP INSIDE EDGE OF THE BOWL OF THE SINK), INDOOR WORK AREAS, INCLUDING MACHINES AND AREAS, ELECTRIC WATER HEATERS, LOCKER ROOMS ASSOCIATED SHOWING FACILITIES, AND SHOWERS. SEE THE GFCI TRADES SIMILAR AREAS. REFER TO VEHICLE EXHIBIT HALLS AND SHOWROOMS. PROVIDE GFCI RECEPTACLES AT LOCATIONS THAT ARE AND WILL REMAIN READILY ACCESSIBLE. ELSEWHERE PROVIDE GFCI PROTECTION AT THE RESPECTIVE SOURCE (CIRCUIT BREAKER).
- F. PROVIDE ALL PENETRATIONS THROUGH FIRE-RATED AND/OR SMOKE-RATED OVERLAYS, FLOORS, WALLS, CEILING(S), ETC. USING SEALANT PRODUCTS TO MEET OR EXCEED THE RATING OF THE RESPECTIVE MEMBRANE.
- G. PROVIDE FACTORY FINISHED OR FIELD-PAINTED TRIMS AND DOORS TO MATCH FINISHES FOR ALL PANEL CARDS AND SIMILAR EQUIPMENT THAT ARE INSTALLED RECESSED IN FINISHED WALLS. IF FIELD-PAINTED, PAINT ALL SURFACES AND EDGES WITH TWO COATS OF PAINT BEFORE INSTALLATION, AND DRY BEFORE INSTALLING THEM.
- H. INSTALL SWITCHES AND/OR RECEPTACLES GANGED WHEREVER POSSIBLE FOR INSTANCES WHERE THEY ARE SHOWN TOGETHER. THIS INCLUDES LOCATIONS ABOVE COUNTERS AND WORK SURFACES WHERE APPLICABLE. INSTALL WALL-MOUNTED SWITCHES, CONTROLS, RECEPTACLES, OUTLETS, ETC. AT LEAST 6 INCHES FROM WALL CORNERS.
- I. CONCEAL ALL CONDUIT DROPS AND RISES WITHIN WALLS, AND PROVIDE FLUSH-MOUNTED WALL OUTLET BOXES UNLESS OTHERWISE NOTED.
- J. REVIEW DOCUMENTS OF OTHER TRADES, INCLUDING ARCHITECTURAL, PRIOR TO SUBMITTING A BID. PROVIDE ELECTRICAL WORK FOR EQUIPMENT, DEVICES, ETC. OF OTHER TRADES AS REQUIRED TO RENDER THEM FULLY OPERATIONAL.
- K. COORDINATE ALL SIGNAGE REQUIREMENTS WITH OWNER (INCLUDING OWNER'S PROJECT MANAGER), SIGNAGE SUPPLIERS AND INSTALLERS, AND ARCHITECT TO DETERMINE SPECIFICS REGARDING LOCATIONS, POWER, CONTROL, AND OTHER PERTINENT INFORMATION. PROVIDE POWER (ON DEDICATED CIRCUIT(S)) FOR SIGNAGE REQUIRING POWER CONNECTIONS. PROVIDE PHOTOCELL AND TIME-BASED CONTROL, CONFIGURED AS DIRECTED BY OWNER. PROVIDE ALL ELECTRICAL WORK, INCLUDING DISCONNECTING MEANS, COMPLIANT WITH ARTICLE 600 OF NFPA 70. COMPLY WITH LANDLORD REQUIREMENTS WHERE APPLICABLE.
- L. ALL LOW VOLTAGE BOXES SHALL BE SINGLE GANG.
- M. ELECTRICAL CONTRACTOR SHALL PROVIDE PHOTOELECTRIC SMOKE DETECTOR IN AIR DUCTS TO DE-ENERGIZE SUPPLY FAN IF ACTIVATED. INSTALLED BY MECHANICAL CONTRACTOR. WIRED BY ELECTRICAL CONTRACTOR AND LANDLORD CONTRACTOR.

ELECTRIC EQUIPMENT SUPPLY SCHEDULE												
EQUIPMENT MARK	SUPPLY FROM	CKT	EMERG.	LOAD (kVA)	VOLTS	POLE	HTG KW	WATT HP	FLA (A)	MCA (A)	RDD OCP (A)	BREAKING (A)
AH-1	B	2,4,6		1.87	208 V	3			5.2	7	15	15
CU-1	B	8,10,12		14.06	208 V	3			39	42	60	60
EF-1	A	11		0.13	120 V	1	128					15
EF-2	A	43		0.55	120 V	1	547					15
WH-1	B	1,3		2.50	208 V	2	2.5					20

**LANDLORD NOTES**

- A. IF ACCESS PANELS ARE REQUIRED, PROVIDE MUD-IN GFRG TYPE BY INTERT FORMS



**KLH ENGINEERS**  
MECHANICAL/ELECTRICAL ENGINEERS  
WWW.KLHENGRS.COM  
1538 ALEXANDRIA PIKE, SUITE 11 FT. THOMAS, KENTUCKY 41075 800-354-9783 859-442-8050 859-442-8050  
LEXINGTON, KENTUCKY COLUMBUS, OHIO CINCINNATI, OHIO NEW YORK

REVISIONS	DATE
ISSUE FOR BID, CLIENT, LANDLORD AND PERMIT	10/27/2017
ISSUE FOR PERMIT	11/17/2017

**robert g. lyon + associates, inc.**  
ARCHITECTS  
1608 W. ARCHITECTURE  
9100 Blue Oaks Circle  
Schiller Park, IL 60176  
P: 847.671.7452  
F: 847.671.7452  
www.rgla.com

THE ABOVE DRAWINGS AND SPECIFICATIONS AND IDEAS, DESIGN AND ARRANGEMENTS REPRESENTED THEREIN ARE AND SHALL REMAIN THE PROPERTY OF THIS OFFICE. NO PART THEREOF SHALL BE COPIED, DISCLOSED TO OTHERS OR USED IN THE CONNECTION WITH ANY WORK OR PROJECT OTHER THAN THE SPECIFIC PROJECT FOR WHICH THEY HAVE BEEN PREPARED AND DEVELOPED WITHOUT THE WRITTEN CONSENT OF THIS OFFICE. VISUAL CONTACT WITH THESE DRAWINGS OR SPECIFICATIONS SHALL CONSTITUTE CONCLUSIVE EVIDENCE OF ACCEPTANCE OF THESE RESTRICTIONS. WRITTEN DIMENSIONS ON THESE DRAWINGS SHALL HAVE PRECEDENCE OVER SCALE DIMENSIONS. CONTRACTOR SHALL VERIFY AND BE RESPONSIBLE FOR ALL DIMENSIONS AND CONDITIONS ON THE JOB AND THE OFFICE MUST BE NOTIFIED OF ANY VARIATIONS FROM THE DIMENSIONS AND CONDITIONS SHOWN BY THESE DRAWINGS. SHOP DETAILS MUST BE SUBMITTED TO THIS OFFICE FOR APPROVAL BEFORE PROCEEDING WITH FABRICATION.

**THE NORTH FACE**  
AVENTURA MALL  
19501 BISCAYNE BLVD  
SPACE #327  
AVENTURA, FL 33180

ELECTRIC POWER PLAN

DRAWN BY	LAH
CHECKED BY	LGF
JOB NUMBER	19811
SHEET NAME	E1.1

OWNERSHIP OF INSTRUMENTS OF SERVICE  
All reports, plans, specifications, computer files, field data, notes and other documents and instruments prepared by the Consultant as instruments of service shall remain the property of the Consultant. The Consultant shall retain all common law, statutory and other reserved rights, including, without limitation, the copyright therein.

1 ELECTRIC POWER PLAN  
1/4" = 1'-0"