

NOTES:

- ENTRY SOFFIT AT 8'-0" AFF. FINISH M-1
- PROVIDE J-BOX FOR TENANT SIGN. SEE ELECTRICAL DRAWINGS
- NIGHT-LIGHT AND EMERGENCY BALLAST LIGHT FIXTURE. SEE ELECTRICAL LIGHTING PLAN
- EMERGENCY BALLAST LIGHT FIXTURE. SEE ELECTRICAL LIGHTING PLAN
- CENTER LIGHT FIXTURE IN SPACE
- EXHAUST FAN CENTERED OVER WATER CLOSET
- ALL SPRINKLER HEADS AT STOREFRONT & OTHER GYP BD. SOFFITS TO BE CONCEALED HEAD TYPE W/ COVER PLATES TO MATCH ADJACENT SURFACE COLOR
- CENTER FIXTURES OVER EACH POS.

NOTES:

- ELECTRICAL CONTRACTOR TO PROVIDE AND INSTALL O.S. - OCCUPANCY SENSOR SWITCHES AT FITTING ROOMS AND TOILET ROOMS. SEE ELECTRICAL PLANS FOR MORE INFORMATION
- SOUND SYSTEM TO BE INSTALLED BY TENANT'S CONTRACTOR. MAIN UNIT TO BE LOCATED IN LOW VOLTAGE RACK. SEE PROJECT DIRECTORY FOR VENDOR CONTACT INFO. VERIFY REQUIREMENTS WITH OWNER AND OWNER VENDOR
- ELECTRICAL CONTRACTOR TO VERIFY LIGHTING IS IN WORKING CONDITION WHEN JOB IS COMPLETE
- ELECTRICAL CONTRACTOR DOES NOT NEED TO BID LIGHT FIXTURES. ALL LIGHT FIXTURES ARE PROVIDED BY OWNER
- ELECTRICAL CONTRACTOR TO PROVIDE AND INSTALL THREADED RIGID CONDUIT FOR (NEW) HI-BAY LIGHTS
- NO DUCTWORK, PIPING, CONDUIT, ETC. SHALL BE SUSPENDED OR ATTACHED TO THE FLOOR DECK AND/OR ROOF DECK. ALL SUCH ITEMS MUST BE SUSPENDED ONLY FROM JOISTS AND/OR BEAMS
- ALL SPRINKLER HEADS AT OPEN CEILING TO BE TURNED FACING UP AT 13'-0" AFF.
- ALL SPRINKLER HEADS AT STOREFRONT & OTHER GYP BD. SOFFITS TO BE CONCEALED HEAD TYPE W/ COVER PLATES TO MATCH ADJACENT SURFACE COLOR
- G.C. TO PROVIDE AND INSTALL 2x2 ACCESS PANELS WHERE REQUIRED (I.E. BELOW HVAC EQUIPMENT, ETC.) PANELS TO BE MANUFACTURED BY: "INTEX FORMS: FIBERGLASS W/ROUND EDGES, TAPE IN PANELS.
- ALL SPEAKERS, DIFFUSERS, ACCESS PANELS, RECEPTACLES AND COVER PLATES IN GYP. BD. CEILINGS TO BE PAINTED TO MATCH ADJACENT CEILING. SEE ELECTRICAL AND MECHANICAL DRAWINGS FOR LOCATIONS.
- G.C. TO VERIFY JURISDICTIONAL REQUIREMENTS FOR EXIT SIGNAGE PLACEMENT, LETTERING COLOR, ETC. PRIOR TO INSTALLATION.
- THIS SHEET IS NOT FOR USE BY LIGHTING SUPPLIER, ELECTRICAL SUB-CONTRACTOR, OR HVAC CONTRACTOR. REFER INSTEAD TO ENGINEERING DRAWINGS
- REFER TO SHEET A-2.2 FOR FIXTURE MOUNTING HEIGHTS AND DETAILS.

TRACK LIGHT (LUX BEAM) INSTALLATION GUIDELINES

- ALL FIXTURES MAY NOT BE USED ON ALL PROJECTS
- MANUFACTURE TO PROVIDE PERMANENT PRE-PAINT MAXIMUM RE-LAMPING LABEL PER LIGHTING FIXTURE SCHEDULE
- PROVIDE ELECTRIC NORMAL OUTPUT INSTANT START BALLAST

4 LIGHT FIXTURE SCHEDULE NOTES

SCALE: NONE

TRACK LIGHT (LUX BEAM) INSTALLATION GUIDELINES

- FOR COMPLETE INSTALLATION INSTRUCTIONS, PLEASE SEE CON-TECH LIGHTING'S INSTALLATION GUIDE THAT CAN BE PROVIDED BY CSI UPON REQUEST.
- LUX BEAM IS SUPPLIED IN 4', 6', 8' AND 12' SECTIONS AND EACH SECTION COMES PREASSEMBLED WITH A LIVE END. CSI WILL SUPPLY THE LEAST # OF PIECES REQUIRED TO MEET THE RUNS NEEDS. FOR EXAMPLE, A 72' RUN WILL BE SHIPPED AS 6 PCS OF 12' LUX BEAM.
- LUX BEAM DOES NOT REQUIRE UNISTRUT OR OTHER STRUCTURAL SUPPORT SYSTEM.
- LUX BEAM IS SUSPENDED WITH EITHER AIRCRAFT CABLE (SUPPLIED BY CSI) OR THREADED ROD (SUPPLIED BY EC) AT EACH JUNCTION WHERE ONE SECTION MEETS ANOTHER OR AT EACH END IF ONLY A SINGLE PIECE OF LUX BEAM IS USED. SEE BELOW EXAMPLES
 - 4' SECTION 2 SUPPORTS
 - 8' SECTION 2 SUPPORTS
 - 12 SECTION 2 SUPPORTS
 - 20' SECTION 3 SUPPORTS-1 AT EACH END AND 1 WHERE THE 8' AND 12' SECTIONS JOIN
 - 60' SECTION 5 SUPPORTS-1 AT EACH END AND 4 WHERE EACH SECTION OF 12' LUX BEAM MEETS WITH ANOTHER
- POWER FEEDS ARE SUPPLIED BY CSI PER THE DRAWINGS AND MOUNT TO A J-BOX PROVIDED BY THE ELECTRICAL CONTRACTOR.

TAG	SYMBOL	DESCRIPTION	MANUFACTURER	MODEL NUMBER	LAMP TYPE	WATTAGE	VOLTAGE	MOUNTING
A	A4, A8, A12	LED CABLE-SUSPENDED LINEAR	LUMIUM	N3-CSD-141-30K-HO-UNV-SD-MB-MF-55-SW-B	(1) INTEGRAL LED	150	120	SUSPENDED @ 11'-6" AFF
B	⌈	TRACK HEAD	CONTECH	CTL2838N-B	(1) 18.5PAR38 G4DIM930NF25/B	21	120	SUSPENDED, BIO TRACKHEAD @ 11'-6" AFF - SALES FLOOR, 12'-0" AFF - DISPLAY WINDOW
D	○	RECESSED DOWNLIGHT	CONTECH	RA4LNC-130K-12D1/CST432 2LN-PL	(1) INTEGRAL LED	16	120	RECESSED
E	▨	2x4 RECESSED TROFFER	COLUMBIA LIGHTING	LCAT24-30-MW-G-E-U	(1) INTEGRAL LED	35	120	RECESSED
F	⊗	MULTI-SPOT RECESSED ADJUSTABLE	JUNO	M8530-S-20-38-1-WH	(3) INTEGRAL LED	30	120	RECESSED
H	⊙	THE WESCO- DEEP BOWL VENTED SHADE PENDANT	BARN LIGHT	VDBW12-PC-100-SBK-100-CIRCLE-VENT	(1) INTEGRAL LED	200	120	SUSPENDED @ 8'-6" AFF
J	J4, J8	LED STRIP LIGHT	COLUMBIA LIGHTING	LCS41-30-ML-ED-U	(1) INTEGRAL LED	48/105	120	SUSPENDED @ 12'-6" AFF
L	L4, L6, L8, L12	LUX BEAM SINGLE CIRCUIT TRACK	CONTECH	LB122141-B	N/A	N/A	N/A	SEE 'B'
P	○	6" LED SURFACE-MOUNT CYLINDER	CONTECH	CL6-230K-MVD2-3-1-PL-5	(1) INTEGRAL LED	33	120	CEILING SURFACE
X	⊕	SINGLE FACE EXIT SIGN RED LETTERING, WHITE FINISH	CONTECH	REXASFREM-P	(1) INTEGRAL LED	3	120	WALL SURFACE
X1	⊕	SINGLE FACE EXIT SIGN RED LETTERING, BLACK FINISH	CONTECH	REXASFREM-B	(1) INTEGRAL LED	3	120	WALL SURFACE
EF	⊗	CEILING EXHAUST FAN						SEE MECHANICAL DRAWINGS

2 PLAN KEY NOTES

SCALE: NONE

NOTE: ALL LIGHTING, INCLUDING SALES, STOCK, AND SIGNAGE IS TO BE ON THE TIME CLOCK. TIMER WILL BE SET FOR 9AM - 11PM M-SAT, AND 9AM - 8PM SUNDAYS UNLESS OTHERWISE INSTRUCTED BY VANS PM. A TWO HOUR OVERRIDE WILL BE PROVIDED FOR USE EITHER BEFORE OR AFTER HOURS AND SHOULD OPERATE THE SALES AND STOCK LIGHTS TOGETHER. SWITCHES WILL BE USED TO SHUT OFF LIGHTS ON DAYS WHEN THE STORE IS NOT OPEN FOR BUSINESS.

3 REFLECTED CEILING PLAN NOTES

SCALE: NONE

NOTE: NOTIFY OWNER AND ARCHITECT IMMEDIATELY IF LIGHT FIXTURE AND CEILING HEIGHTS ARE NOT ACHIEVABLE

NOTE: MECHANICAL DUCTWORK TO RUN BELOW FINISHED CEILING. DO NOT PAINT! REFER TO MECHANICAL DRAWINGS FOR LOCATIONS.

5 TRACK INSTALL NOTES

SCALE: NONE

NOTE: AT LEAST 75% OF PERMANENTLY INSTALLED LIGHTING FIXTURES SHALL BE HIGH EFFICACY LAMPS PER FEC.

6 LIGHT FIXTURE SCHEDULE

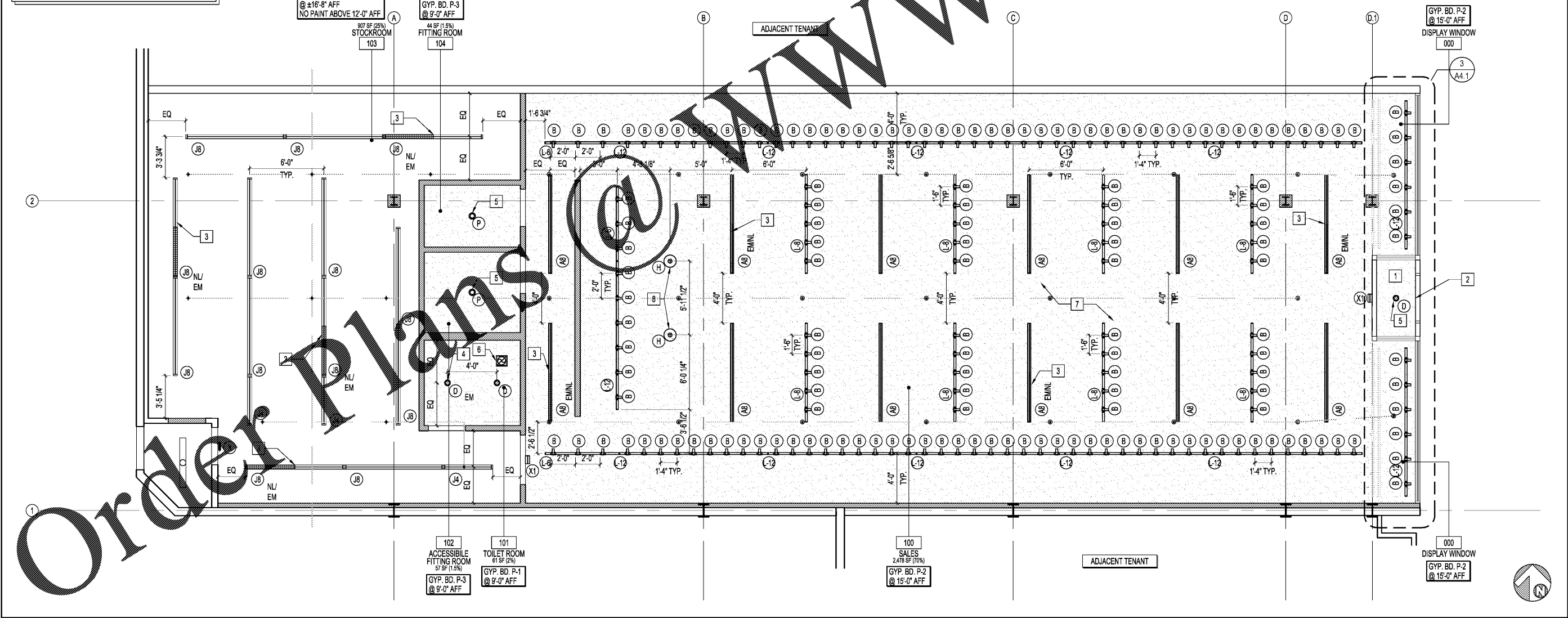
SCALE: NONE

NOTE: ALL SPRINKLER HEADS SHOULD BE THE QUICK RESPONSE TYPE

NOTE: FIRE SPRINKLER HEAD LOCATIONS SHOWN ARE FOR CONCEPTUAL DESIGN ONLY. THE EXACT SIZE, TYPE AND LOCATION OF ALL THE FIRE SPRINKLER SYSTEM AND ITS COMPONENTS INCLUDING RISERS, MAINS, BRANCH LINES AND HEAD TYPES SHALL BE DESIGNED BY A LICENSED ENGINEER. REFER TO COMPLETE PERFORMANCE SPECIFICATIONS AND SPRINKLER SHOP DRAWINGS FOR SCOPE OF WORK.

SYMBOL LEGEND

- CONCEALED SPRINKLER HEAD
- ⊕ UPRIGHT SPRINKLER HEAD



1 REFLECTED CEILING PLAN

SCALE: 1/4"=1'-0"

RGLA
 solutions, inc.
 15100 River Road, Ste 125
 Schiller Park, IL 60176
 P: 847.871.7462
 F: 847.871.4200
 www.rgla.com

REVISIONS	DATE
ISSUE FOR CLIENT AND LANDLORD	10/27/2017
ISSUE FOR PERMIT	11/17/2017
ISSUE FOR BID - REV 1	11/27/2017

robert g. lyon + associates, inc.
 5101 North State Street
 Schiller Park, IL 60176
 P: 847.871.7462
 F: 847.871.4200
 www.rgla.com

THE ABOVE DRAWINGS AND SPECIFICATIONS AND DETAILS, DESIGN AND ARRANGEMENTS REPRESENTED THEREIN ARE AND SHALL REMAIN THE PROPERTY OF THIS OFFICE AND NO PART THEREOF SHALL BE COPIED, DISCLOSED TO OTHERS OR USED IN THE CONNECTION WITH ANY WORK OR PROJECT OTHER THAN THE SPECIFIC PROJECT FOR WHICH THEY HAVE BEEN PREPARED AND DEVELOPED WITHOUT THE WRITTEN CONSENT OF THIS OFFICE. VISUAL CONTACT WITH THESE DRAWINGS OR SPECIFICATIONS SHALL CONSTITUTE CONCLUSIVE EVIDENCE OF ACCEPTANCE OF THESE RESTRICTIONS.

WRITTEN DIMENSIONS ON THESE DRAWINGS SHALL HAVE PRECEDENCE OVER SCALED DIMENSIONS. CONTRACTORS SHALL VERIFY AND BE RESPONSIBLE FOR ALL DIMENSIONS AND CONDITIONS ON THE JOB AND THIS OFFICE MUST BE NOTICED OF ANY VARIATIONS FROM THE DIMENSIONS AND CONDITIONS SHOWN IN THESE DRAWINGS. SHOP DETAILS MUST BE SUBMITTED TO THIS OFFICE FOR APPROVAL BEFORE PROCEEDING WITH FABRICATION.

©2017 RGLA SOLUTIONS, INC.
 8007 ROBERT G. LYON & ASSOCIATES, INC.

THE NORTH FACE
 AVENTURA MALL
 19501 BISCAYNE BLVD
 SPACE #327
 AVENTURA, FL 33180

REFLECTED CEILING PLAN AND LEGEND

DRAWN BY	AC
CHECKED BY	KK
JOB NUMBER	17183
SHEET NAME	A-2.1