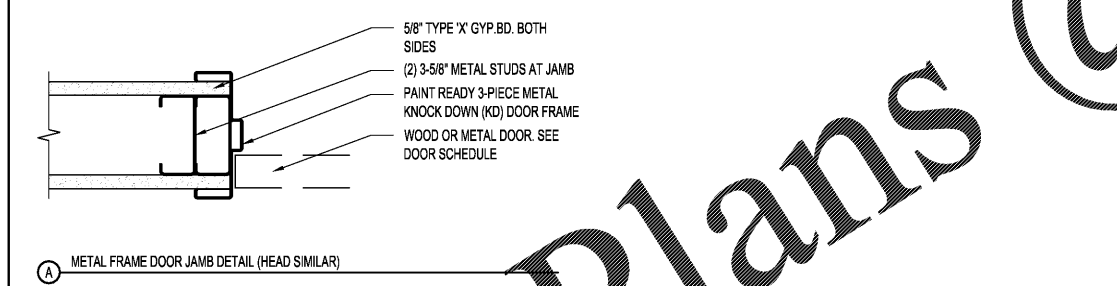
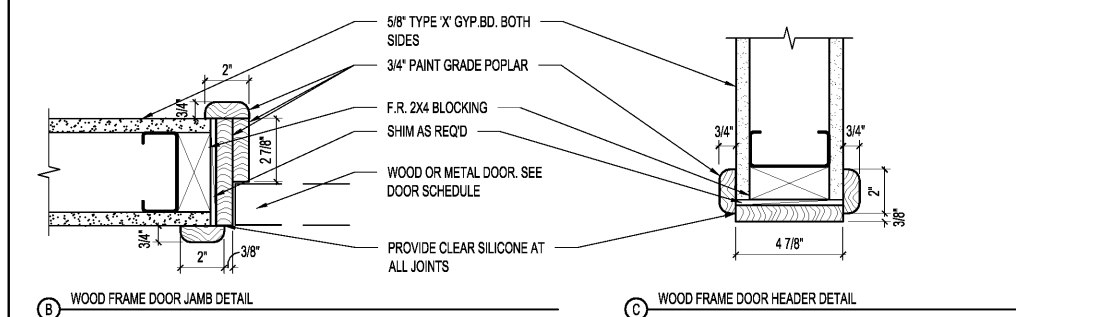


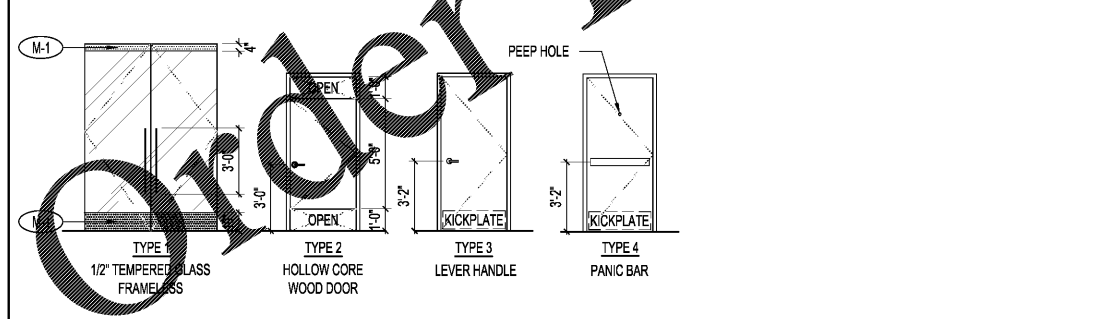
ROOM NO.	ROOM NAME	FLOOR	BASE	WALLS				CEILING	NOTES
				NORTH	EAST	SOUTH	WEST		
000	DISPLAY WINDOW	M-1	N/A	P-1	N/A	P-1	P-1	P-2	
100	SALES	F-2	B-1	P-1	P-1/WG	P-1	P-1	P-2	
101	TOILET ROOM	F-4	F-4	FRP/P-1	FRP/P-1	FRP/P-1	FRP/P-1	P-1	FRP TO 48"; P-1 ABOVE FRP
102	ACCESSIBLE FITTING ROOM	F-1	B-1	WG	WG	WG	WG	P-3	LEVEL 5 GYP FINISH; DOORS AND FRAMES P-3
103	STOCKROOM	F-3	B-2	P-1	P-1	P-1	P-1	N/A	NO PAINT ABOVE 12'-0"
104	FITTING ROOM	F-1	B-1	WG	WG	WG	WG	P-3	LEVEL 5 GYP FINISH; DOORS AND FRAMES P-3

- FINISH NOTES:**
- REFER TO REFLECTED CEILING PLAN, A-2.1 FOR CEILING FINISHES.
 - FOR ALL FINISHES: INSTALL AND MAINTAIN PER MANUFACTURER AND INDUSTRY STANDARDS, USING MANUFACTURER RECOMMENDED INSTALLATION METHODS AND MATERIALS.
 - PAINTS: WALLS TO RECEIVE LO-SHEEN EGGSHELL LATEX, DOORS & TRIM TO RECEIVE SEMI-GLOSS ALKYD, CEILING TO RECEIVE FLAT LATEX.
 - ALL SALES WALL FINISHES SHALL HAVE CLASS 'C' MINIMUM FLAME SPREAD RATING.
 - AREAS TO RECEIVE LATEX PAINT TO BE PRIMED WITH (1) COAT OF PLASTIC SEALER PRIOR TO RECEIVING (2) COATS OF PAINT.
 - AREAS TO RECEIVE ALKYD OR ENAMEL PAINT TO BE PRIMED WITH (1) COAT OF ENAMEL UNDERCOAT PRIOR TO RECEIVING (2) COATS OF PAINT.
 - PAINT ALL WIRING, EQUIPMENT, EXPOSED DUCTWORK, DIFFUSERS, CEILING RECEPTACLES AND COVER PLATES IN SALES AREA TO MATCH CEILING (REFER TO MEP PLANS FOR LOCATIONS).
 - SALES FLOOR MUST HAVE ADHESIVE AND BUMPS FROM EXTRANEOUS MATERIALS REMOVED, ANY REPOUR OF CONCRETE DONE AFTER TRENCHING MUST BE SMOOTH WITH NO SIGNIFICANT INCREASE OR DECREASE OF LEVELNESS OF ADJACENT FLOOR SURFACES.
 - ALL SALES FLOOR SURFACES MUST BE SMOOTH WITH MINIMAL DEPRESSIONS. G.C. TO SURFACE SCRAPE CONCRETE TO LEVEL. G.C.'S ARE TO INCLUDE IN THEIR BIDS THE COST FOR DIAMOND GRINDING. SEE FINISH SCHEDULE FOR SPECIFICATION AND ADDITIONAL INFORMATION. ACCEPTABLE IMPERFECTIONS INCLUDE: MINOR DIVOTS, CHIPS, SMALL CRACKS, MARKS DUE TO CONSTRUCTION. WHEN UNCERTAIN, G.C. TO CONTACT OWNER OR ARCHITECT TO VERIFY.
 - ALL DECORATIVE MATERIALS SHALL BE MAINTAINED IN A FLAME-RETARDANT CONDITION.
 - PAINT ELECTRICAL RECEPTACLES, SWITCH PLATES, AND ELECTRICAL COVER PLATES TO MATCH ADJACENT WALL FINISH.
 - REFER TO INTERIOR ELEVATIONS SHEETS A-1.2, A-5.1 & A5.2 FOR MORE INFORMATION ON WALL MATERIALS AND FINISHES.

4 ROOM FINISH SCHEDULE (LOCATIONS SPECIFIED ARE FOR GENERAL PURPOSES, REFER TO PLANS & ELEVATIONS FOR EXACT LOCATIONS) SCALE NONE



3 DOOR FRAME DETAILS SCALE 3\"/>



2 DOOR TYPES SCALE 1/2\"/>

PAINT (LOCATION SPECIFIED ARE FOR GENERAL PURPOSES, REFER TO PLANS & ELEVATIONS FOR EXACT LOCATIONS)

- P-1** SHERWIN WILLIAMS #SW6198: "SENSIBLE HUE" EGGSHELL FINISH: WALLS, SEMI-GLOSS FINISH: DOORS AND DOOR TRIM LOCATION: ALL SALES AREA & STOCK WALLS & TOILET ROOM WALLS (ABOVE FRP) AND CEILING
- P-2** SHERWIN WILLIAMS #SW7057: "SILVER STRAND" EGGSHELL FINISH: COLUMNS, FLAT FINISH: CEILING LOCATION: SALES CEILING & COLUMNS
- P-3** SHERWIN WILLIAMS #SW6385: "DOVER WHITE" EGGSHELL FINISH: WALLS, SEMI-GLOSS FINISH: DOORS AND DOOR TRIM LOCATION: ALL FITTING ROOM CEILING

FLOORING

- F-1** FLOR CARPET TILE - STYLE: DOWN TO EARTH COLOR: ASPHALT SIZE: TBD FLOOR REPRESENTATIVE: SHAWN LINETT - 212.253.2164
- F-2** SEAL-KRETE (OR EQUAL) SINGLE COMPONENT HIGH-GLOSS CONCRETE SEALER COLOR: GRAY MECHANICALLY GRIND FLOOR W/40GRIT METAL BONDED DIAMOND ABRASIVE UNTIL SCRATCH PATTERN IS ACHIEVED. PATCH SPALLS AND CRACKS. PREPARE FLOOR FOR INSTALLATION OF (2) COATS.
- F-3** AS NEEDED: RETROPLATE SYSTEM GRAY POLYUREA JOINT FILLER CHASE, CLEAN OUT AND INSTALL POLYUREA JOINT FILLER IN ALL CONSTRUCTION CONTROL/EXPANSION JOINTS. REPRESENTATIVE: JERRY REED - 248.521.6882
- FRP** DAL TILE - VOLUME 1.0 GLAZED PORCELAIN 12" X 12" - STEREO GREY VL73 WITH P-36C9 6" X 12" COVE BASE - STEREO GREY VL73, MEDIUM MORTAR BED REQUIRED - CUSTOM BUILDING PRODUCTS #60 CHARCOAL - 178" JOINT TILE - T: 800.933.8453 W: DAL TILE.COM GROUT - T: 800.272-8786

WALL BASE

- WB-1** 4" H X 1/2" THICKNESS MDF, PAINTED P-1 SEMI-GLOSS
- WB-2** JOHNSONITE #20 "CHARCOAL" 4" HIGH COVED VINYL BASE. APPLY TO WALL WITH MANUFACTURERS RECOMMENDED ADHESIVE. STOCKROOM & MANAGER'S OFFICE ONLY JOHNSONITE REPRESENTATIVE: DAWN BONETTI - 248.563.4400

WOOD

- WD-2** PIONEER MILLWORKS - TRADEWINDS BRIGHT TROPICAL HARDWOOD MIX, FINISH: MATTE WATER-BASED-POLYURETHANE, SIZE: 2 1/2" W X 1 1/2" THICKNESS IN RANDOM LENGTH UP TO 6'-0" FITTING ROOM BENCH REPRESENTATIVE: RAY PATTENGELL - 415.961.2854

METAL

- M-1** 16 GA. (.065") DARK BRONZE ANODIZED BRAKE METAL

FIBER-REINFORCED PLASTIC

- FRP** FIBERGLASS REINFORCED PANEL - 1/2" X 96" WHITE UNDERLAY BOARD DURABLE STABIL PLASTIC COMPOSITE POLYESTER RESIN CONSTRUCTION PANEL MODEL #: MFT12XA480006600 HOME DEPOT STORE # 123456 G.C. TO PURCHASE FROM HOME DEPOT / LOWE'S OTHER HOME IMPROVEMENT STORE

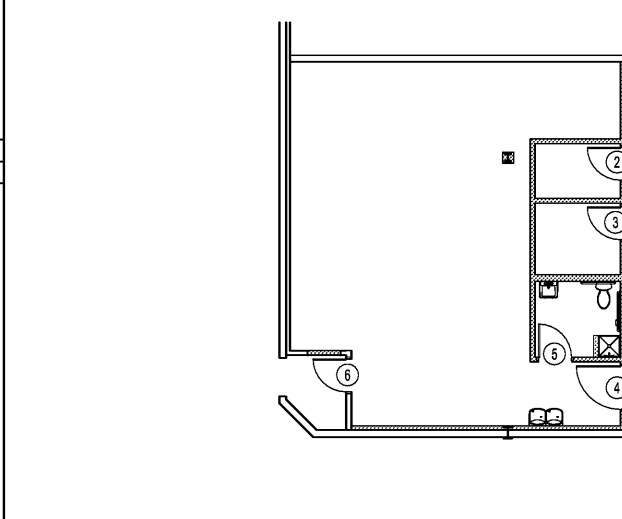
ACOUSTICAL CEILING TILE

- ACT-1** 1" CEILING SYSTEM 2" WHITE 2X4 PISURE' MANAGER'S OFFICE REPRESENTATIVE: MARY JO CONNIN - 248.324.0186

WALL GRAPHIC

- WG-1** WALL GRAPHIC SUPPLIED AND INSTALLED BY TNF VENDOR. G.C. IS TO TAPE, SPACKLE AND SAND GYP. BD. AND APPLY PIGMENTED (WHITE) ACRYLIC PRIMER FOLLOWED BY A COAT OF ZINSSER'S "GARDZ" PRIMER/SEALER, FINISHED GYP. BD. TO HAVE LEVEL 5 FINISH.

5 FINISH SCHEDULE SCALE NONE



1 DOOR KEY PLAN SCALE 1/8\"/>

DOOR

MARK	LOCATION	TYPE	HARDWARE	SIZE	MATERIAL	FINISH	MATERIAL	FINISH	REMARKS
1	STOREFRONT - EXIT	1	C	(2) 3'-0" x 8'-0"	GLASS	N/A	METAL	M-1	2
2	FITTING ROOM	2	E	3'-0" x 5'-0"	S.C. WOOD	P-1 (EXTERIOR) P-3 (INTERIOR)	WOOD	P-1 (EXTERIOR) P-3 (INTERIOR)	1,2
3	ACCESSIBLE FITTING ROOM	2	E	3'-0" x 5'-0"	S.C. WOOD	P-1 (EXTERIOR) P-3 (INTERIOR)	WOOD	P-1 (EXTERIOR) P-3 (INTERIOR)	1,2
4	SALES/STOCK	3	A	4'-0" x 7'-0"	H.M.	P-1	H.M.	P-1	3
5	TOILET ROOM	3	B	3'-0" x 7'-0"	H.M.	P-1	H.M.	P-1	
6	RECEIVING	4	D	3'-0" x 7'-0"	EXISTING	P-1	EXISTING	P-1	4,5

FRAME

- REMARKS:**
- DOOR SILENCERS TO BE INSTALLED AND PAINTED TO MATCH DOOR FRAME.
 - PROVIDE BEST 7 CYLINDER INTERCHANGEABLE CORE BY TNF, FINISH TO MATCH LEVERS. COORDINATE WITH LANDLORD & OWNER.
 - ADDITIONAL OWNER PROVIDED EXIT CODED DEVICE & PAD TO BE PROVIDED AND INSTALLED BY OWNER. DEVICE TO SOUND ALARM WHEN DOOR IS OPEN. INSTALLATION TO BE COORDINATED BY CONTRACTOR.
 - 90 MINUTE RATED DOOR, G.C. TO BRING HARDWARE UP TO TNF STANDARD SPECIFICATIONS. G.C. TO VERIFY EXISTING BUZZERS IN WORKING ORDER. G.C. TO WIRE EXISTING BUZZER TO CHIME LOCATED AT CASHWRAP AND STOCKROOM, REFER TO ELECTRICAL DRAWINGS FOR MORE INFO. REPAIR SIGNAGE TO MEET LOCAL CODE STANDARDS.
 - PROVIDE MALL-STANDARD ID SIGN PER TENANT CRITERIA MANUAL.
- GENERAL DOOR NOTES:**
- KEY ALL DOORS ALIKE. PRIOR TO CONSTRUCTION CONTRACTOR TO VERIFY WITH HARDWARE SUPPLIER AND ARCHITECTURAL CONSULTANT THAT ALL DOOR HARDWARE MEETS ALL STATE AND LOCAL CODES AND ORDINANCES. NOTIFY OWNER OF ANY DISCREPANCIES.
 - ALL LOCKING DEVICES AND PANIC HARDWARE SHALL BE VERIFIED BY TNF.
 - ALL DOORS AND HARDWARE SHALL CONFORM TO CURRENT APPLICABLE STANDARDS FOR HANDICAPPED ACCESSIBILITY.
 - CONTRACTOR WILL PROVIDE ALL LOCKS WITH CONSTRUCTION CORES, MASTER CONSTRUCTION KEY & CONTROL KEY FOR ALL CONSTRUCTION CORES. THEY WILL ALSO SUBMIT A LOCK SCHEDULE WITH LOCK TYPE & FINISH.
 - HARDWARE FINISH IS TO BE AS SPECIFIED IN SCHEDULE.
 - ALL DOORS ARE TO RECEIVE TOP, WALL MOUNTED DOOR MOUNTED OR OVERHEAD TYPE STOP.
 - DOOR AND FRAME TO BE PAINTED WITH SEMI-GLOSS FINISH TO MATCH ADJACENT WALL UNLESS NOTED OTHERWISE ON FINISH PLAN OR IN FINISH SPECS.

6 DOOR SCHEDULE SCALE NONE

- SET A - SALES/STOCK:**
- ADAMS RITE B192Z REINFORCING FOOT, US2G FINISH
 - PBB 4851 4 1/2" x 4 1/2" NRP HEAVY WEIGHT HINGES, US26D FINISH
 - SCHLAGE ND10S RHO CLOSERS & 10-025 PASSAGE SET WITHRU BOLTS, 626 FINISH
 - LCN 1461 RWIPA SRT CLOSER - PARALLEL ARM, ALUMINUM FINISH
 - HIAWATHA METAL .050x10x46 KICK PLATE, US32D FINISH
 - DON-JO #1407-630 WALL STOP, 630 FINISH
 - IVES FS438 FLOOR STOP, US28 FINISH
- SET B - TOILET ROOM:**
- PBB BB81 4 1/2" x 4 1/2" STANDARD WEIGHT HINGES, US26D FINISH
 - SCHLAGE L9440-L283-722-068-583-363-48102 MORTISE SET, 626 FINISH
 - LCN 1461 RWIPA SRT CLOSER - PARALLEL ARM, ALUMINUM FINISH
 - DON-JO #1407-630 WALL STOP, 630 FINISH
 - IVES FS438 FLOOR STOP, US28 FINISH
 - BEST 7-PIN CYLINDER INTERCHANGEABLE CORE LOCKSET, BRONZE FINISH
- SET C - STOREFRONT:**
- CR LAURENCE DCH4DUD DOUBLE DOOR HEADER, BLACK BRONZE FINISH
 - CR LAURENCE INT308DU DOUBLE DOOR HEADER STOP, BLACK BRONZE FINISH
 - CR LAURENCE DR4SDU12S 4" SQUARE TOP DOOR RAIL, BLACK BRONZE FINISH
 - CR LAURENCE DR10SDU12SL 10" SQUARE BOTTOM RAIL W/LOCK, BLACK BRONZE FINISH
 - CR LAURENCE 38LP STRAIGHT STYLE LADDER PULL, BLACK BRONZE FINISH
 - CR LAURENCE DRA1020DU CYLINDER/THUMB TURN COMBO LOCK, BLACK BRONZE FINISH
- SET D - RECEIVING DOOR:**
- PBB 4851 4 1/2" x 4 1/2" NRP HEAVY WEIGHT HINGES, US26D FINISH
 - DETEX ECL-600-LONG BAR EXIT ALARM
 - DETEX ECL-2100K PROTECTOR BAR
 - DETEX EXL-15-95 RING COLLAR
 - DETEX 107R CORE HOUSING
 - HIAWATHA PP200F PUSH PLATE, US32D FINISH
 - LCN #1461 HCUSH CLOSER, PARALLEL ARM, ALUMINUM FINISH
 - HIAWATHA METAL .050x10x34 KICK PLATE, US32D FINISH
 - REESE DS75C 36x84 WEATHER STRIP
 - REESE 377C 36W DOOR SWEEP
 - SCHLAGE S425A 36W THRESHOLD
 - ROCKWOOD #620 (OR #621) 180° DOOR VIEWER (1/2" DRILL HOLE, FOR DOORS L03222, L03172), CRM FINISH
 - BEST 7-PIN CYLINDER INTERCHANGEABLE CORE LOCKSET, BRONZE FINISH
 - GRAINGER 1FD18 DOOR PUSH BUTTON
 - GRAINGER 1FD14 DOOR BUZZER
- SET E - FITTING ROOMS:**
- PBB BB81 4 1/2" x 4 1/2" STANDARD WEIGHT HINGE, US26D FINISH
 - PBB SP81 4 1/2" x 4 1/2" SPRING HINGES
 - SCHLAGE NDR08D CLASSROOM SET WITHRU BOLTS, 626 FINISH
 - DON-JO #1407-630 WALL STOP, 630 FINISH
 - BEST 7-PIN CYLINDER INTERCHANGEABLE CORE LOCKSET, BRONZE FINISH
 - IVES #571 COAT & HAT HOOK, A92 FINISH

ALL DOORS IN RATED WALLS TO RECEIVE (1) SET SMOKE SEALS AND (1) AUTOMATIC CLOSER. DOOR HARDWARE CONSTRUCTION CORES TO REMAIN. OWNER TO REMOVE AND INSTALL FINAL CORES

7 HARDWARE SCHEDULE SCALE NONE

RGLA
 rgl solutions, inc.
 1501 River Road, Ste 125
 Deerfield Park, IL 60178
 p: 847.671.7452
 f: 847.671.4200
 www.rgls.com

REVISIONS	DATE
ISSUE FOR CLIENT AND LANDLORD	10/27/2017
ISSUE FOR PERMIT	11/17/2017
ISSUE FOR BID - REV 1	11/27/2017

robert g. lyon + associates, inc.
 retail architecture
 5111 N. University Ave.
 Suite 100
 Schaumburg, IL 60196
 P: 847.671.7452
 F: 847.671.4200
 www.rgla.com

THE ABOVE DRAWINGS AND SPECIFICATIONS AND DEAS, DESIGN AND ARRANGEMENTS REPRESENTED THEREIN ARE AND SHALL REMAIN THE PROPERTY OF THIS OFFICE AND NO PART THEREOF SHALL BE COPIED, DISCLOSED TO OTHERS OR USED IN THE CONNECTION WITH ANY WORK OR PROJECT OTHER THAN THE SPECIFIC PROJECT FOR WHICH THEY HAVE BEEN PREPARED AND DEVELOPED WITHOUT THE WRITTEN CONSENT OF THIS OFFICE. VISUAL CONTACT WITH THESE DRAWINGS OR SPECIFICATIONS SHALL CONSTITUTE A CONCLUSIVE EVIDENCE OF ACCEPTANCE OF THESE RESTRICTIONS. WRITTEN DIMENSIONS ON THESE DRAWINGS SHALL HAVE PRECEDENCE OVER SCALED DIMENSIONS. CONTRACTORS SHALL VERIFY AND BE RESPONSIBLE FOR ALL DIMENSIONS AND CONDITIONS ON THE JOB AND THIS OFFICE MUST BE NOTIFIED OF ANY DISCREPANCIES FROM THE DIMENSIONS AND CONDITIONS SHOWN BY THESE DRAWINGS BEFORE PROCEEDING WITH FABRICATION.

©2017 RGLA SOLUTIONS, INC.
 ©2017 ROBERT G. LYON + ASSOCIATES, INC.

THE NORTH FACE
 AVENTURA MALL
 19501 BISCAYNE BLVD
 SPACE #327
 AVENTURA, FL 33180

SCHEDULES

DRAWN BY
AC
 CHECKED BY
KK
 JOB NUMBER
17183
 SHEET NAME
A-0.1

Order Plans @