

REVISIONS	DATE
ISSUE FOR CLIENT LANDLORD AND PERMIT	11/01/2017
ISSUE FOR PERMIT	11/17/2017

robert g. lyon + associates, inc.
 Retail Architecture
 5100 Schiller Park, IL 60176
 P: 847.671.7452
 F: 847.671.4200
 www.rgla.com

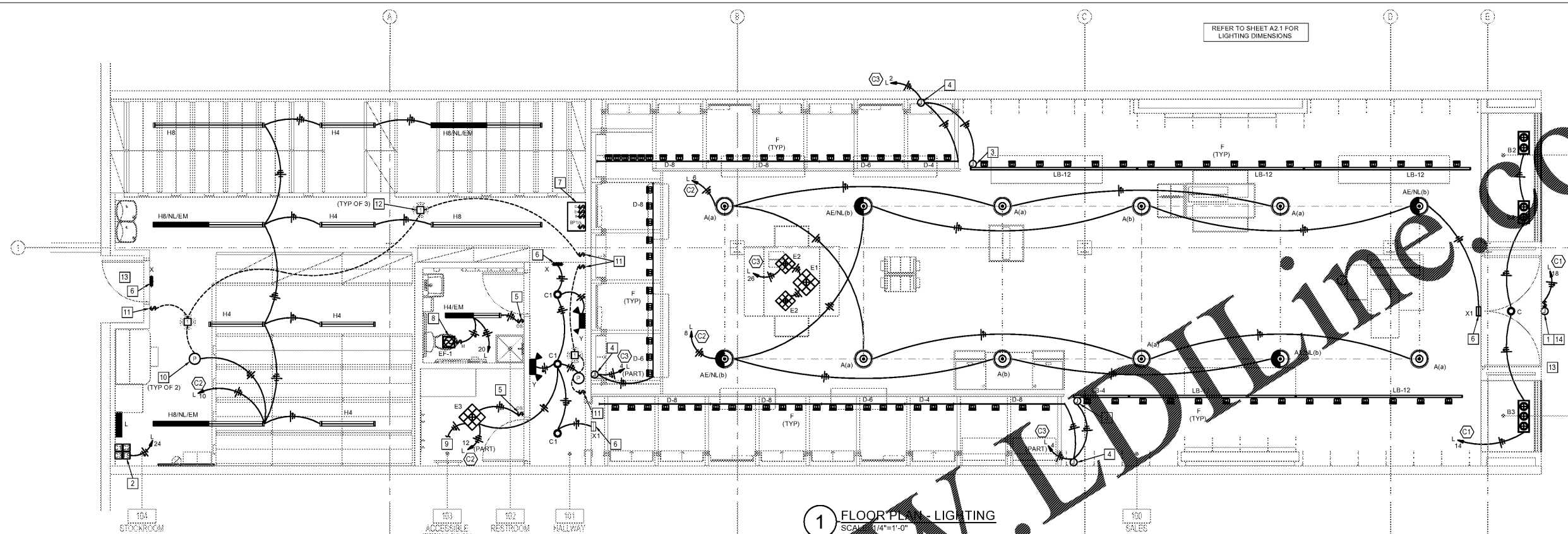
THE ABOVE DRAWINGS AND SPECIFICATIONS AND IDEAL DESIGN AND ARRANGEMENTS REPRESENTED THEREIN ARE AND SHALL REMAIN THE PROPERTY OF THIS OFFICE AND NO PART THEREOF SHALL BE COPIED, DISCLOSED TO OTHERS OR USED IN THE CONNECTION WITH ANY WORK OR PROJECT OTHER THAN THAT SPECIFICALLY IDENTIFIED HEREIN WITHOUT THE WRITTEN CONSENT OF THIS OFFICE. VISUAL CONTACT WITH THESE DRAWINGS OR SPECIFICATIONS SHALL CONSTITUTE A BREACH OF THE TERMS OF ACCEPTANCE OF THESE DRAWINGS. WRITTEN DIMENSIONS ON THESE DRAWINGS SHALL HAVE PRECEDENCE OVER SCALED DIMENSIONS. CONTRACTORS SHALL VERIFY AND BE RESPONSIBLE FOR ALL DIMENSIONS AND CONDITIONS ON THE JOB AND THIS OFFICE WILL NOT BE NOTIFIED OF ANY VARIATIONS FROM THE DIMENSIONS AND CONDITIONS SHOWN BY THESE DRAWINGS. SHOP DETAILS MUST BE SUBMITTED TO THIS OFFICE FOR APPROVAL BEFORE PROCEEDING WITH FABRICATION.

VANS
 "OFF THE WALL" SINCE 1966
 VANS #522
 AVENTURA MALL
 19501 BISCAYNE BLVD
 SPACE #31
 AVENTURA, FL 33180

LIGHTING PLAN, FIXTURE SCHEDULE

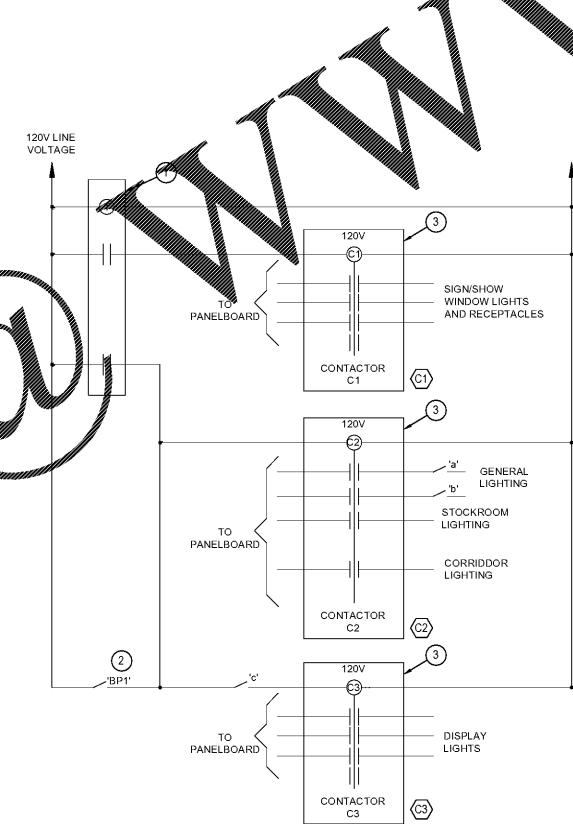
DRAWN BY: RPH
 CHECKED BY: ELW
 JOB NUMBER: 17182-522
 SHEET NAME: E-1.2

Only Plans @ WWW.LDLINE.COM



1 FLOOR PLAN LIGHTING
 SCALE: 1/4"=1'-0"

LIGHTING FIXTURE SCHEDULE						
TYPE	SYMBOL	DESCRIPTION	MANUFACTURER/CATALOG NUMBER	LAMP TYPE	VOLTAGE	WATTS VA
A	⊙	12" LED HIGH BAY WITH BLACK HOUSING AND CORD	CONTECH CPL530KMD2FC-B WITH AL516-B SHADE	(1) 57 WATT LED	UNV	57W 57VA
AE	⊙	12" LED HIGH BAY WITH BLACK HOUSING AND CORD AND EMERGENCY BATTERY BACKUP PRODUCING 1350 LUMENS FOR 90 MINUTES	CONTECH CPL530KDD2FC-B WITH AL516-B SHADE	(1) 57 WATT LED	UNV	57W 57VA
B2	⊙	RECESSED ADJUSTABLE LED PAR 38 STOREFRONT LUMINAIRE HEAVY DUTY 18 GAUGE STEEL HOUSING WITH POWDER COAT FINISH	CONTECH RAN15038-X2-B-21-LBL	SOLAS LR38/25/30/1200/BK/ES (2) 21 W PAR 38 LED	120V	42W 42VA
B3	⊙	RECESSED ADJUSTABLE LED PAR 38 STOREFRONT LUMINAIRE HEAVY DUTY 18 GAUGE STEEL HOUSING WITH POWDER COAT FINISH	CONTECH RAN15038-X3-B-21-LBL	SOLAS LR38/25/30/1200/BK/ES (3) 21 W PAR 38 LED	120V	63W 63VA
C	●	6" RECESSED PAR 38 LED DOWN LIGHT, FACTORY LABELED FOR 21 MAXIMUM WATTAGE, SPECTACULAR REFLECTOR AND BLACK TRIM	CONTECH RL38-21-LBL/CTR3802-CLR	SOLAS LR38/25/30/1200/BK/ES (1) 21 W PAR 38 LED	120V	21W 21VA
C1	●	6" RECESSED PAR 38 LED DOWN LIGHT, FACTORY LABELED FOR 21 MAXIMUM WATTAGE, SPECTACULAR REFLECTOR AND WHITE TRIM	CONTECH RL38-21-LBL/CTR3802-CLR	SOLAS LR38/25/30/1200/BK/ES (1) 21 W PAR 38 LED	120V	21W 21VA
D	—	CONTECH LT SERIES TRACK SECTION (LENGTH PER PLAN) SPECIFY CURRENT LIMITER PANEL WHEN REQUIRED PER CODE	CONTECH LT SERIES (2'-4'-8'-8'-12') BLACK	N/A	120V	N/A N/A
E1	⊙	16" DIAMETER WIRE GRID PENDANT COMPACT FLOURESCENT, RAW STEEL CLEAR COAT FINISH. REFER TO ARCHITECTURAL DRAWINGS FOR LUMINAIRE EXACT LOCATION AND MOUNTING HEIGHTS.	HILITE MFG. CO. H-OP1-12-OP-RSC/CBWB-91/SQ16-GRD-RSC	EDITION D-XW-120A	120V	40W 40VA
E2	⊙	12" WIRE GRID PENDANT COMPACT FLOURESCENT, RAW STEEL CLEAR COAT FINISH. REFER TO ARCHITECTURAL DRAWINGS FOR LUMINAIRE EXACT LOCATION AND MOUNTING HEIGHTS.	HILITE MFG. CO. H-OP1-12-OP-RSC/CBWB-91/SQ16-GRD-RSC	LED120-30S REC-330-120A	120V	40W 40VA
E3	⊙	16" WIRE GRID PENDANT COMPACT FLOURESCENT, RAW STEEL CLEAR COAT FINISH. REFER TO ARCHITECTURAL DRAWINGS FOR LUMINAIRE EXACT LOCATION AND MOUNTING HEIGHTS.	HILITE MFG. CO. H-OP1-12-OP-RSC/CBWB-91/SQ16-GRD-RSC	TCP 42 W CFL #48942	120V	46W 48VA
F	⊙	ADJUSTABLE TRACK FIXTURE WITH BLACK FINISH MOUNTED TO FIXTURE TYPES 'D' AND 'LB'. REFER TO TRACK INSTALLATION GUIDE ON SHEET E1.2	CONTECH CTL530-120	SOLAS LR38/25/30/1200/BK/ES 21 W PAR 38 LED	120V	21W 21VA
H4	—	4' FLUORESCENT OPEN STRIP LIGHT SUSPENSION OR SURFACE MOUNT PER PLAN. EM-PROVIDE EMERGENCY BATTERY PACK BATTERY PACK TO MAINTAIN A MINIMUM OF 1350 LUMENS FOR 90 MINUTES. EM CONNECT TO NIGHT LIGHT CIRCUIT. ELECTRONIC BALLAST	SIMCAR CH232-B11-UNV4'	PHILIPS F32T8 TL830 ALTO II (2) 32 W T8	UNV	59W 61VA
H8	—	8' FLUORESCENT OPEN STRIP LIGHT SUSPENSION OR SURFACE MOUNT PER PLAN. EM-PROVIDE EMERGENCY BATTERY PACK BATTERY PACK TO MAINTAIN A MINIMUM OF 1350 LUMENS FOR 90 MINUTES. EM CONNECT TO NIGHT LIGHT CIRCUIT. ELECTRONIC BALLAST	SIMCAR CH232-B11-UNV8'	PHILIPS F32T8 TL830 ALTO II (4) 32 W T8	UNV	112W 114VA
LB	—	BLACK TRACK HANGING LUX BEAM (LENGTH PER PLANS) WITH CONTECH LT SERIES TRACK SECTIONS OF MATCHING LENGTH. SPECIFY CURRENT LIMITER PANEL AS NEEDED PER CODE. SURFACE MOUNTED THERMOPLASTIC EXIT SIGN, WHITE SIGN WITH RED LETTERS, PUSH BUTTON TEST SWITCH, Ni-Cad BATTERY FOR 90 MINUTE BATTERY BACKUP.	CONTECH LB122 SERIES (2'-4'-8'-8'-12')	N/A	120V	N/A N/A
X1	—	SURFACE MOUNTED EDGE LIT EXIT SIGN WITH UNIVERSAL MOUNTING CANOPY (CLEAR PANEL - RED LETTERS), PUSH BUTTON TEST SWITCH, Ni-Cad BATTERY FOR 90 MINUTE BATTERY BACKUP.	BEST LIGHTING ELXTE-U-1-RC-B-EM	LED 3.2 W LED (INCLUDED)	UNV	4W 4VA
Y	—	SURFACE MOUNTED BLACK EMERGENCY LIGHT WITH TWO ADJUSTABLE HEADS, SEALED LEAD ACID BATTERY 90 MINUTE BATTERY BACK-UP. PUSH BUTTON TEST SWITCH. MOUNT AT 9'-0" ABOVE FINISHED FLOOR.	BEST LIGHTING LEDR-1-HL	LED (2) 6V LED (INCLUDED)	UNV	12W 12VA



2 LIGHTING CONTROL DIAGRAM
 NOT TO SCALE

3 LIGHTING CONTROL SWITCH BANK
 NOT TO SCALE

NOTES:
 1. PILOT LIGHT SWITCHES, ILLUMINATED WHEN SWITCH IS IN 'ON' POSITION, WITH LABELED PLATE THAT SHOWS IDENTIFICATION OF CONTROL. PROVIDED BY VENDOR. SEE SPECIFICATION SECTION '180' ON SHEET E-1.4 FOR MORE INFORMATION.
 2. REFER TO 2/E1.2 LIGHTING CONTROL DIAGRAM FOR MORE INFORMATION.

SOUND SYSTEM INSTALLATION NOTES:

SOUND SYSTEM TO BE DESIGNED AND INSTALLED BY TENANT'S CONTRACTOR. MAIN UNIT TO BE LOCATED IN LOW VOLTAGE RACK ON TELEPHONE BOARD. SEE PROJECT DIRECTORY FOR VENDOR CONTACT INFORMATION. VERIFY REQUIREMENTS WITH TENANT.

LIGHTING CONTROL NOTES:

- CONTACTOR 'C1' SHALL CONTROL ALL STOREFRONT SIGNAGE AND SHOW WINDOW LIGHT/RECEPTACLES. CONTACTOR SHALL NOT BE OVERRIDDEN BY BY-PASS SWITCH. COORDINATE ON/OFF SCHEDULING WITH MALL AND VANS.
- CONTACTOR 'C2' SHALL CONTROL ALL GENERAL LIGHTING ON SALES FLOOR, STOCK ROOM AND CORRIDOR. SWITCHES 'y' AND 'y1' SHALL BE WIRED DOWN STREAM OF THE CONTACTOR AND SERVE AS A 50/50 MANUAL ON/OFF CONTROLS OF SALES FLOOR GENERAL LIGHTS. THE STOCKROOM AND CORRIDOR LIGHTING CIRCUITS SHALL BE WIRED DOWN STREAM OF THE CONTACTOR. NOTE: SWITCHES WILL ONLY TURN LIGHTS ON IF BY-PASS SWITCH OR TIMECLOCK IS ON.
- CONTACTOR 'C3' SHALL CONTROL ALL DISPLAY LIGHTING IN STORE. SWITCH 'y' IS TO SERVE AS A MEANS TO MANUALLY SHUT OFF ALL LIGHTING ON CONTACTOR 'C3'.

LIGHTING CONTROL DIAGRAM NOTES:

- 7-DAY ASTRONOMICAL TIME CLOCK THAT ALLOWS FOR WEEKDAYS AND WEEKEND AND HOLIDAY SETTINGS. AUTO ADJUSTS FOR DAYLIGHT SAVINGS AND LENGTH OF SUNLIGHT PER DAY. POLES SHALL OPERATE ON A DIFFERENT TIME SCHEDULE. UNIT SHALL HAVE CAPABILITY TO PREVENT THE LOSS OF PROGRAMMING DURING A POWER FAILURE. PROVIDE TORQ ELC74 TIME SWITCH. NO EXCEPTIONS.
- TIME CLOCK OVERRIDE SWITCH WITH (2) HOUR MAXIMUM TIME SETTINGS. PROVIDED BY VENDOR.
- 20 AMP, ELECTRICALLY HELD LIGHTING CONTACTOR. PROVIDE NUMBER OF POLES REQUIRED. COORDINATE NUMBER OF POLES REQUIRED ON EACH CONTACTOR WITH PANEL SCHEDULES.

GENERAL LIGHTING NOTES:

- ALL LIGHTING SHALL BE IN EMT OR RIGID CONDUIT. FLEXIBLE CONDUIT MAY ONLY BE USED FOR FINAL CONNECTIONS FROM OUTLET BOXES TO LIGHT FIXTURES, MOTORS, APPLIANCES, ETC. (MAX LENGTH 6'-0"). NO BX, NM, ARMORED CABLE, ETC. ALLOWED.
- ALL LIGHT FIXTURES AND LAMPS ARE FURNISHED BY VANS AND INSTALLED BY ELECTRICAL CONTRACTOR.
- FOR EXACT LOCATION OF LIGHT FIXTURES SEE ARCHITECTURAL PLANS AND DETAILS. AIM ALL ADJUSTABLE FIXTURES AS DIRECTED BY TENANT'S REPRESENTATIVE.
- ELECTRICAL CONTRACTOR TO VERIFY LIGHTING IS IN WORKING CONDITION WHEN JOB IS COMPLETE.
- NO DUCTWORK, PIPING, CONDUIT, ETC. SHALL BE SUSPENDED OR ATTACHED TO THE FLOOR DECK AND/OR ROOF DECK. ALL SUCH ITEMS MUST BE SUSPENDED ONLY FROM JOISTS AND/OR BEAMS.
- PROVIDE THREADED RIGID CONDUIT FOR (NEW) HI-BAY LIGHTS.
- CONNECT EMERGENCY BALLAST/NIGHT LIGHTS/EMERGENCY LIGHTS/EXIT SIGNS AHEAD OF CONTACTOR AND SWITCH CONTROLS.
- LIGHT FIXTURES WITH SUB-LETTER 'NL' ARE NIGHT LIGHTS. FIXTURE WITH SUB-LETTER 'EM' ARE EMERGENCY LIGHTS. WIRE THESE LIGHT FIXTURES AHEAD OF CONTACTOR AND/OR SWITCH CONTROL.
- MAXIMUM INTERRUPTING RATING FOR ALL RELAYS AND ALL CONTACTORS SHALL BE 10,000 AIC.

LIGHTING PLAN NOTES:

- PROVIDE WEATHERPROOF JUNCTION BOX WITH NEMA 3R TOGGLE SWITCH ABOVE STOREFRONT FOR SIGN. PROVIDE CONNECTION FOR SIGN SEE ARCHITECTURAL DRAWINGS FOR EXACT LOCATION.
- TIME CLOCK AND LIGHTING CONTACTORS. MOUNT ABOVE PANELS. REFER TO LIGHTING CONTROL WIRING DIAGRAM 2/E1.2 FOR MORE INFORMATION.
- PROVIDE CONNECTION TO CONTINUOUS IN-LINE TRACK FEEDS. COORDINATE EXACT LOCATION OF TRACK CONNECTION WITH ARCHITECT OR OWNERS REPRESENTATIVE PRIOR TO INSTALLATION. MOUNT JUNCTION BOX IN LOCATION THAT IS LEAST VISIBLE.
- PROVIDE JUNCTION BOX FOR CONNECTION TO CONTINUOUS IN-LINE TRACK FEEDS. REFER TO DETAIL 6/A2.2 FOR MORE INFORMATION.
- WALL OCCUPANCY SWITCH PROVIDED BY VENDOR. REFER TO ELECTRICAL DEVICE GUIDE ON SHEET E1.1 FOR COLOR OF DEVICE. SEE SPECIFICATION SECTION '26B' ON SHEET E1.4 FOR MORE INFORMATION.
- REFER TO SHEET A5.1 FOR MOUNTING HEIGHT.
- LIGHT CONTROL SWITCHES. REFER TO LIGHTING CONTROL NOTES AND 3/E1.2 FOR MORE INFORMATION.
- CEILING MOUNTED EXHAUST FAN EF-1 TO BE CIRCUITED AND CONTROLLED WITH RESTROOM LIGHTING VIA WALL MOUNTED OCCUPANCY SENSOR.
- REFER TO SHEET E1.1 FOR CONTINUATION TO RECEPTACLE LOCATED IN SAME ROOM.
- PROVIDE WATSTOPPER POWER PACK LMRC-101 OR EQUAL.
- PROVIDE WATSTOPPER LOW VOLTAGE SWITCH LMSW-101 OR EQUAL.
- PROVIDE WATSTOPPER CEILING MOUNTED OCCUPANCY SENSOR LMDC-100 OR EQUAL.
- EXTERIOR NORMAL EGRESS AND EMERGENCY LIGHTING BY LANDLORD.
- WIRE SIGN THROUGH DISCONNECT IN ELECTRICAL ROOM AS REQUIRED BY LANDLORD.

TRACK INSTALLATION NOTES

- TRACK LIGHT (LUX BEAM) INSTALLATION GUIDELINES
- FOR COMPLETE INSTALLATION INSTRUCTIONS, PLEASE SEE CON-TECH LIGHTING'S INSTALLATION GUIDE THAT CAN BE PROVIDED BY CSI UPON REQUEST.
 - LUX BEAM IS SUPPLIED IN 4', 8', 8' AND 12' SECTIONS AND EACH SECTION COMES PREASSEMBLED WITH A LIVE END. CSI WILL SUPPLY THE LEAST NUMBER OF PIECES REQUIRED TO MEET THE RUNS NEEDS. EXAMPLE: A 72' RUN WILL BE SHIPPED AS 6 PIECES OF 12' LUX BEAM.
 - LUX BEAM DOES NOT REQUIRE UNISTRUT OR OTHER STRUCTURAL SUPPORT SYSTEM.
 - LUX BEAM IS SUSPENDED WITH EITHER AIRCRAFT CABLE (SUPPLIED BY CSI) OR THREADED ROD (SUPPLIED BY CONTRACTOR) AT EACH JUNCTION WHERE ONE SECTION MEETS ANOTHER OR AT EACH END IF ONLY A SINGLE PIECE OF LUX BEAM IS USED. SEE BELOW EXAMPLES:
 - 4' SECTION REQUIRES (2) SUPPORTS
 - 8' SECTION REQUIRES (2) SUPPORTS
 - 12' SECTION REQUIRES (2) SUPPORTS
 - 20' SECTION REQUIRES (3) SUPPORTS, (1) AT EACH END AND (1) WHERE THE 8' AND 12' SECTIONS JOIN
 - 60' SECTION REQUIRES (5) SUPPORTS, (1) AT EACH END AND (1) WHERE EACH SECTION OF 12' LUX BEAM MEET WITH ANOTHER
 - POWER FEEDS ARE SUPPLIED BY CSI PER THE DRAWINGS AND MOUNT TO A JUNCTION BOX PROVIDED BY THE CONTRACTOR.

HENDERSON ENGINEERS
 8345 LEXENA DRIVE, SUITE 300
 LEXENA, KS 66214
 TEL (913) 742-5000 FAX (913) 742-5001
 WWW.HENDERSONENGINEERS.COM
 1750003858
 FL CERTIFICATE OF AUTHORIZATION # EB 7606
 EXPIRES 02/28/19