

PLAN NOTES:

- 1 MOUNT BOTTOM OF DUCT AT MINIMUM 14'-0" AFF. NOTIFY ARCHITECT AND VANS PM IMMEDIATELY IF 14'-0" AFF CANNOT BE ACHIEVED.
- 2 COORDINATE INSTALLATION OF EQUIPMENT, DUCTWORK AND PIPING WITH ALL TRADES. DO NOT ROUTE DUCTWORK OR PIPING OVER ELECTRICAL PANELS.
- 3 PROVIDE COMPATIBLE 7-DAY PROGRAMMABLE CONTROLLER (T) INSTALLED AT 36" AFF AT MANAGER'S DESK AND REMOTE TEMPERATURE SENSOR (S) MOUNTED 42" AFF. PROVIDE LOCKING PLASTIC COVER FOR CONTROLLER. COORDINATE STYLE, SIZE AND COLOR OF REMOTE SENSORS WITH ARCHITECT. COORDINATE CONTROL REQUIREMENTS WITH LANDLORD REPRESENTATIVE PRIOR TO BID.
- 4 CONNECT NEW OUTSIDE AIR DUCT TAPPED OFF THE TOP OF NEW RETURN BOOT TO EXISTING LANDLORD OUTSIDE AIR DUCT. CONTRACTOR TO FIELD VERIFY EXACT LOCATION OF LANDLORD OUTSIDE AIR DUCT AND POINT OF CONNECTION PRIOR TO SUBMITTING BID.
- 5 PROVIDE 120 VOLT DUCT MOUNTED SMOKE DETECTOR. DETECTOR SHALL MEET REQUIREMENTS OF U.L. 268A. INTERLOCK SMOKE DETECTOR TO SHUT DOWN UNIT UPON DETECTION OF SMOKE. PROVIDE SMOKE DETECTOR WITH AN ANNUNCIATOR WITH PIEZO ALARM AND POWER LEDS FOR VISIBLE AND AUDIBLE ALARM SIGNAL, AND VISIBLE TROUBLE SIGNAL. PROVIDE WITH REMOTE RESET AND MOUNT ANNUNCIATOR ON ROOM SIDE OF CEILING OR OTHER AHJ APPROVED LOCATION. SMOKE DETECTOR TO BE TIED INTO MALL FIRE ALARM PANEL. CONNECTION TO BE PROVIDED BY SIEMENS.
- 6 REMOVE EXISTING FAN COIL UNITS ASSOCIATED WITH THIS SPACE AND PROVIDE NEW FAN COIL UNIT. HANG FROM STRUCTURE PER LANDLORD'S REQUIREMENTS. FIELD VERIFY EXISTING CONDITIONS PRIOR TO SUBMITTING BID.
- 7 REMOVE EXISTING CONDENSING UNITS ON ROOF AND PROVIDE NEW CONDENSING UNITS. COORDINATE EXACT LOCATION ON ROOF WITH LANDLORD. FIELD VERIFY EXISTING CONDITIONS PRIOR TO SUBMITTING BID.
- 8 CONNECT NEW REFRIGERANT LINES TO NEW FAN COIL UNIT AND ROUTE UP THROUGH ROOF TO NEW CONDENSING UNIT. CONTRACTOR TO VERIFY LOCATION OF EXISTING REFRIGERANT PIPE ROUTING AND PENETRATIONS THROUGH ROOF. APPROXIMATE PIPING RUN IS 50'. COORDINATE ROOFING REQUIREMENTS WITH LANDLORD IF NEW PENETRATIONS ARE REQUIRED. FIELD VERIFY ALL EXISTING CONDITIONS PRIOR TO SUBMITTING BID.
- 9 UNDERCUT DOOR 1" FOR TRANSFER AIR.
- 10 CONNECT AND EXTEND NEW 6" EXHAUST DUCT FROM NEW EXHAUST FAN TO EXISTING LANDLORD TOILET EXHAUST DUCT. CONTRACTOR TO FIELD VERIFY EXACT LOCATION OF LANDLORD TOILET EXHAUST DUCT AND POINT OF CONNECTION PRIOR TO SUBMITTING BID.
- 11 PROVIDE RETURN BOOT SAME SIZE AS UNIT INLET AS SHOWN WITH A MINIMUM 1" LINER AND 1/4" HARDWARE CLOTH SECURED OVER OPENING OF DUCT. EXTEND DUCT A MINIMUM 2' HORIZONTALLY.

GENERAL DEMOLITION NOTES:

1. REMOVE ALL EXISTING MECHANICAL EQUIPMENT, DUCTWORK, HANGERS, SUPPORTS, PIPING, AND ACCESSORIES SERVING ONLY THIS SPACE AND NOT INDICATED TO REMAIN.
2. OWNER RETAINS RIGHTS OF SALVAGE FOR EQUIPMENT AND FIXTURES TO BE REMOVED. COORDINATE WITH OWNER THE EQUIPMENT AND FIXTURES TO BE SALVAGED AND THE LOCATION FOR STORAGE. AVOID DAMAGE TO SALVAGED EQUIPMENT, FIXTURES AND DEVICES DURING DEMOLITION WORK AND DURING TRANSPORT TO OWNER'S DESIGNATED STORAGE LOCATION.
3. SEAL PENETRATIONS THROUGH FLOORS, WALLS, CEILINGS AND ROOFS WHERE MECHANICAL COMPONENTS ARE REMOVED AND WHERE THE PENETRATION IS NOT USED FOR THE NEW INSTALLATION. REPAIR DAMAGED SURFACES TO MATCH ADJACENT AREAS OR AS INDICATED ON THE ARCHITECTURAL DRAWINGS.
4. INSTALL PERMANENT CAPS WHERE DUCTWORK AND PIPING IS REMOVED AND THE EXISTING TAPS ARE NOT USED FOR THE NEW INSTALLATION. WHERE DUCTWORK AND PIPING ARE REMOVED AND THE EXISTING TAPS WILL BE USED FOR THE NEW INSTALLATION, INSTALL TEMPORARY CAPS TO PROTECT THE INTERIOR SURFACES UNTIL NEW DUCTWORK AND PIPING ARE INSTALLED.
5. CAP UNUSED ROOF CURBS WITH 18 GAUGE GALVANIZED SHEET METAL CAP. INSULATE CURB CAPS WITH 1" THICK 3 PC DENSITY DUCT LINER, AND SEAL WATER TIGHT. FIELD VERIFY EXISTING CONDITIONS PRIOR TO BID.

GENERAL NOTES:

1. PRIOR TO SUBMITTING BID, THE CONTRACTOR AND HIS SUBCONTRACTORS SHALL VISIT THE JOB SITE AND FULLY ACQUAINT THEMSELVES WITH THE EXISTING CONDITIONS OF THE PROJECT. THE CONTRACTOR AND HIS SUBCONTRACTORS SHALL BE RESPONSIBLE FOR REVIEW OF THE GENERAL NOTES, SPECIFICATIONS AND ALL OTHER DRAWINGS FOR ADDITIONAL REQUIREMENTS WHICH MAY NOT BE SPECIFICALLY CALLED OUT IN THIS PORTION OF THE CONSTRUCTION DOCUMENTS. NOTIFY OWNER'S CONSTRUCTION MANAGER OF ANY CONFLICTS OR DISCREPANCIES PRIOR TO SUBMISSION OF BID.
2. COORDINATE WITH THE WORK OF OTHER SECTORS. EQUIPMENT FURNISHED BY OTHERS. REQUIREMENTS OF THE OWNER AND WITH THE CONSTRAINTS OF THE EXISTING CONDITIONS AT THE PROJECT SITE. PROVIDE DUCT RISERS AND STOPS AS REQUIRED FOR FIELD INSTALLATION AND TIE-IN COORDINATION. NOTIFY ARCHITECT OF ANY DISCREPANCIES BEFORE STARTING WORK.
3. DRAWINGS FOR HVAC WORK ARE DIAGRAMMATIC. THE GENERAL LOCATION, TYPE, LAYOUT, AND EQUIPMENT REQUIRED. THE DRAWINGS SHALL NOT BE SCALED FOR EXACT MEASUREMENT. REFER TO ARCHITECTURAL DRAWINGS FOR DIMENSIONS. REFER TO MANUFACTURER'S STANDARD INSTALLATION DRAWINGS FOR EQUIPMENT CONNECTIONS AND INSULATION REQUIREMENTS. PROVIDE DUCTWORK, CONNECTIONS, ACCESSORIES, OFFSETS, AND MATERIALS NECESSARY FOR A COMPLETE SYSTEM.
4. ALL WORK SHALL COMPLY WITH STATE AND LOCAL CODE REQUIREMENTS APPROVED AND AMENDED BY THE GOVERNING CITY. PURCHASE ALL PERMITS ASSOCIATED WITH THIS WORK. OBTAIN ALL INSPECTIONS REQUIRED BY CODE.
5. PROVIDE TURNING VANES IN ALL SQUARE (90 DEGREE) ELBOWS.
6. CONTRACT LANDLORD'S APPROVED ROOFING CONTRACTOR TO FLASH AND SEAL ALL NEW ROOF PENETRATIONS WHEN REQUIRED BY THE DESIGN SHOWN ON THESE DRAWINGS HAVING ANY NEW ROOFTOP MECHANICAL EQUIPMENT OR ACCESSORIES.
7. INSTALL EXHAUST FAN A MINIMUM OF 10 FT FROM ANY INTAKE AIR OPENINGS.
8. INSPECT ALL EXISTING EQUIPMENT INDICATED TO REMAIN AND REPORT ANY DAMAGE OR REPAIRS REQUIRED. THOROUGHLY WIPE DOWN WITH CLEAN RAGS OR VACUUM CLEAN SAID EQUIPMENT, INCLUDING, BUT NOT BE LIMITED TO, ALL AIR OUTLETS AND INLETS.
9. EXERCISE CAUTION IN PERFORMING THE WORK SO AS NOT TO DAMAGE ANY EXISTING CONDITIONS OR SYSTEMS THAT ARE TO REMAIN IN PLACE. CORRECT ANY DAMAGE CREATED BY THIS WORK TO THE SATISFACTION OF THE ARCHITECT WITHOUT ADDITIONAL COST TO THE OWNER.
10. ALL DUCTWORK SHALL BE STEEL.
11. DUCTWORK SIZES SHOWN ARE CLEAR INSIDE DIMENSIONS; SHEET METAL SHALL BE INCREASED ACCORDINGLY FOR LINER.
12. EXISTING ITEMS SHOWN ON PLAN ARE PROVIDED FOR COORDINATION PURPOSES. THE LOCATION AND ELEVATION OF THESE ITEMS SHALL BE VERIFIED PRIOR TO SUBMITTING BID. NOTIFY OWNER'S CONSTRUCTION MANAGER OF ANY CONFLICTS OR DISCREPANCIES.

RGLA
 rglasolutions, inc.
 5100 Schlierer Park, Ste 125
 Schlierer Park, IL 60178
 p: 847.671.7452
 f: 847.671.4200
 www.rgla.com

REVISIONS	DATE
ISSUE FOR BIDDING	11/01/2017
ISSUE FOR PERMIT	11/07/2017

robert g. lyon + associates, inc.
 5100 Schlierer Park, IL 60178
 p: 847.671.7452
 f: 847.671.4200
 www.rgla.com

THE ABOVE DRAWINGS AND SPECIFICATIONS AND IDEAS, DESIGN AND ARRANGEMENTS REPRESENTED THEREIN ARE AND SHALL REMAIN THE PROPERTY OF THIS OFFICE AND NO PART THEREOF SHALL BE COPIED, DISCLOSED TO OTHERS OR USED IN THE CONNECTION WITH ANY WORK OR PROJECT OTHER THAN THE SPECIFIC PROJECT FOR WHICH THEY HAVE BEEN PREPARED AND DEVELOPED WITHOUT THE WRITTEN CONSENT OF THIS OFFICE. VISUAL CONTACT WITH THESE DRAWINGS OR SPECIFICATIONS SHALL CONSTITUTE CONCLUSIVE EVIDENCE OF ACCEPTANCE OF THESE RESTRICTIONS. WRITTEN DIMENSIONS ON THESE DRAWINGS SHALL HAVE PRECEDENCE OVER SCALED DIMENSIONS. CONTRACTORS SHALL VERIFY AND BE RESPONSIBLE FOR ALL DIMENSIONS AND CONDITIONS ON THE JOB AND THIS OFFICE MUST BE NOTIFIED OF ANY VARIATIONS FROM THE DIMENSIONS AND CONDITIONS SHOWN BY THESE DRAWINGS. SHOP DETAILS MUST BE SUBMITTED TO THIS OFFICE FOR APPROVAL BEFORE PROCEEDING WITH FABRICATION.

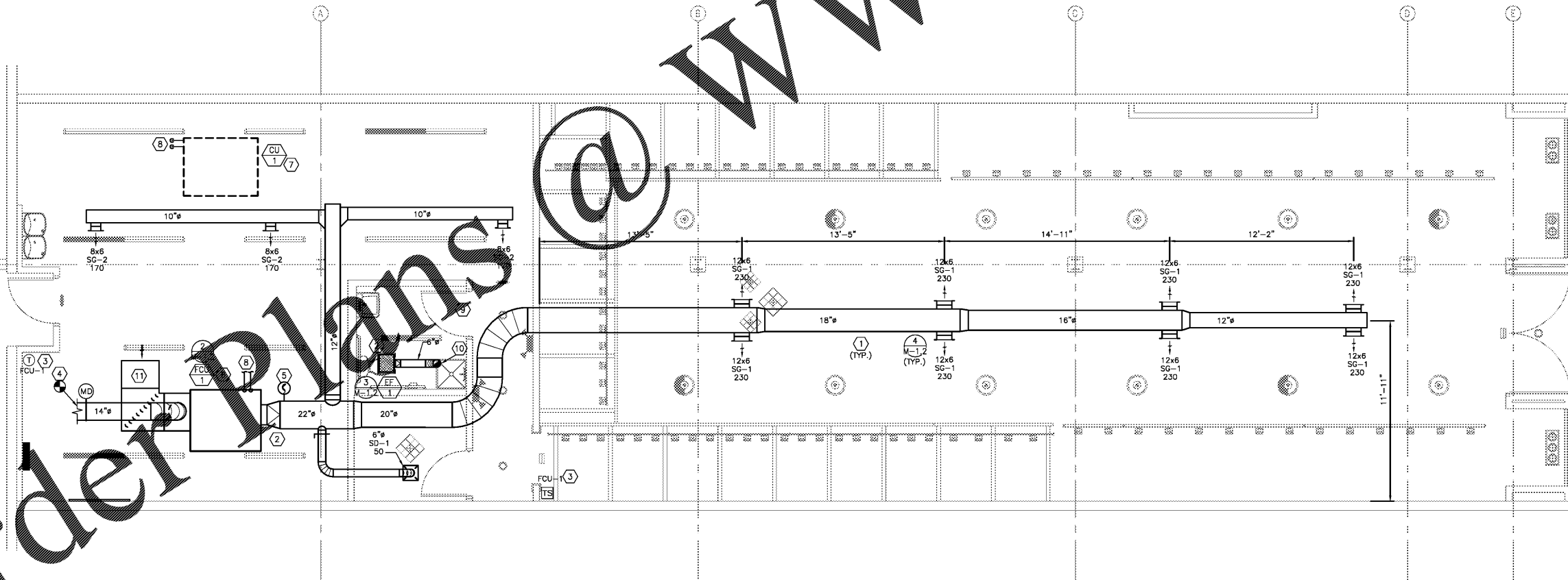
© 2017 RGLA SOLUTIONS, INC.
 BY: ROBERT G. LYON & ASSOCIATES, INC.

VANS
 "OFF THE WALL" SINCE 1966
 VANS #522
 AVENTURA MALL
 19501 BISCAYNE BLVD
 SPACE #311
 AVENTURA, FL 33180

MECHANICAL PLAN

DRAWN BY	HEI
CHECKED BY	HEI
JOB NUMBER	17182-522
SHEET NAME	M-1.1

HENDERSON ENGINEERS
 8345 LENEVA DRIVE, SUITE 300
 LENOVA, KS 66214
 TEL (913) 742-5000 FAX (913) 742-5001
 WWW.HENDERSONENGINEERS.COM
 1750003858
 FL CERTIFICATE OF AUTHORIZATION # EB 7606
 EXPIRES 02/28/19



1 MECHANICAL PLAN
 SCALE: 1/4"=1'-0"

NOTE:
 MECHANICAL CONTRACTOR SHALL STENCIL THE FAN COIL UNIT. STENCIL SHALL INDICATE STORE NAME, SPACE NUMBER AND EQUIPMENT DESIGNATION IN LETTERING A MINIMUM OF 2 INCHES IN HEIGHT. MECHANICAL CONTRACTOR SHALL TAG CONDENSING UNIT WITH TENANT ID SIGN.

NOTE:
 UNIT DUCT DROPS SHOWN ON PLAN ARE NOT REPRESENTATIVE OF FIELD CONDITIONS. VERIFY IN FIELD PRIOR TO INSTALLATION.

Order Plans