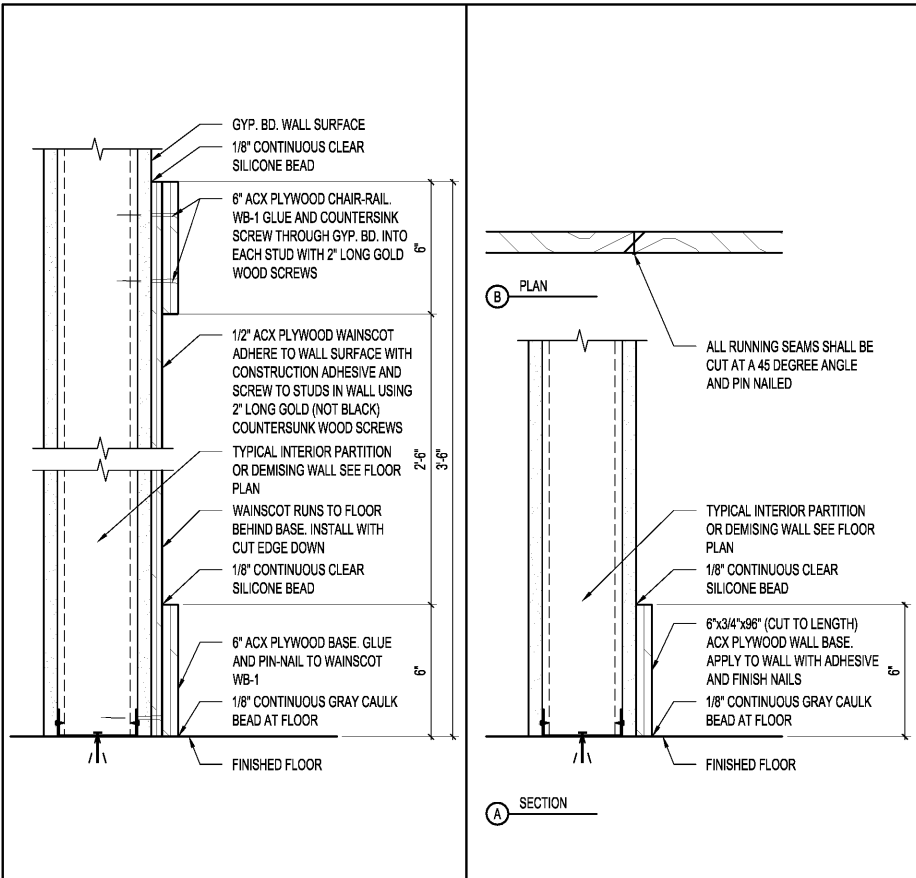
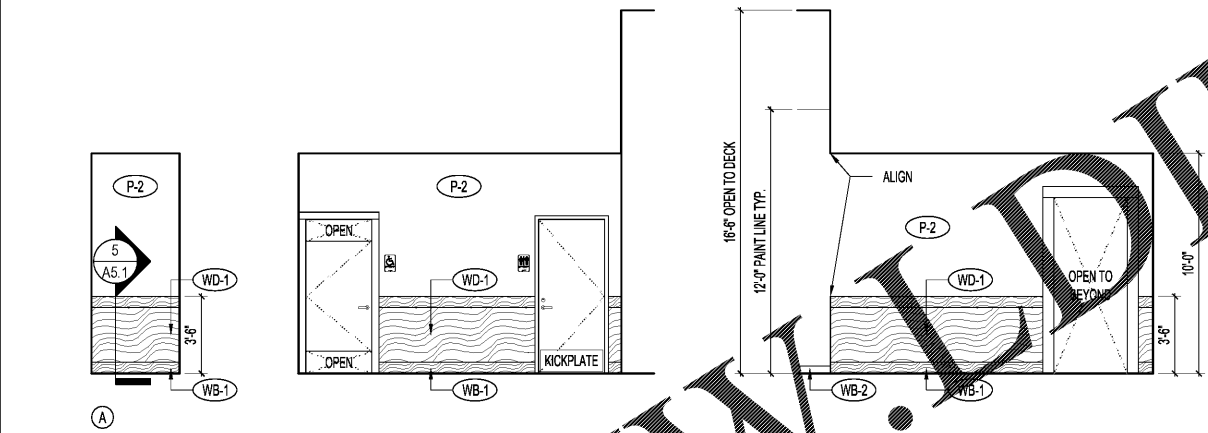


REVISIONS	DATE
ISSUE FOR CLIENT AND LANDLORD	11/1/2017
ISSUE FOR PERMIT	11/17/2017
ISSUE FOR BID - REV 1	11/27/2017

**robert g. lyon + associates, inc.**  
 retail architecture  
 5100 S. Halsted Street  
 Schiller Park, IL 60176  
 p: 847.671.7452  
 f: 847.671.4200  
 www.rgla.com



3 NOT USED



5 WOOD WAINSCOT DETAIL

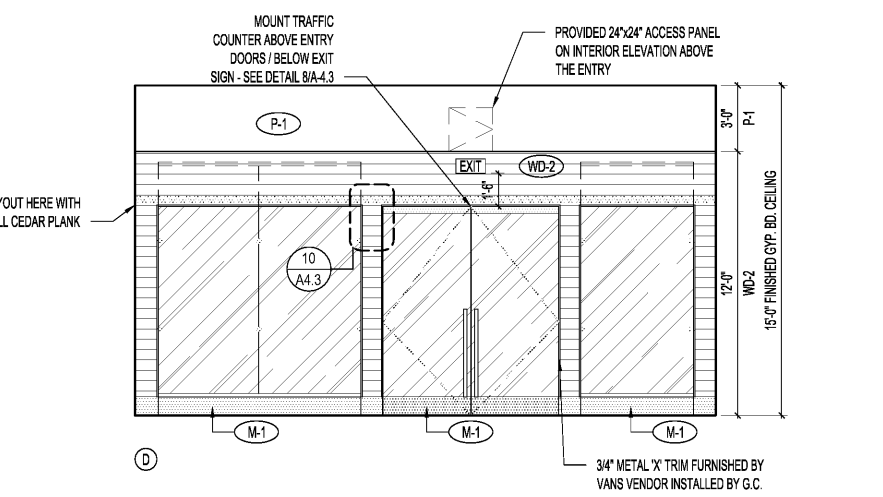
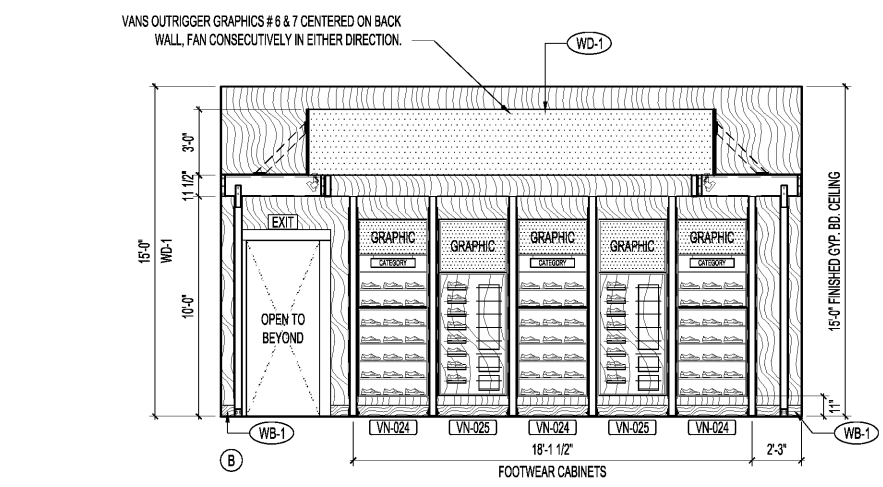
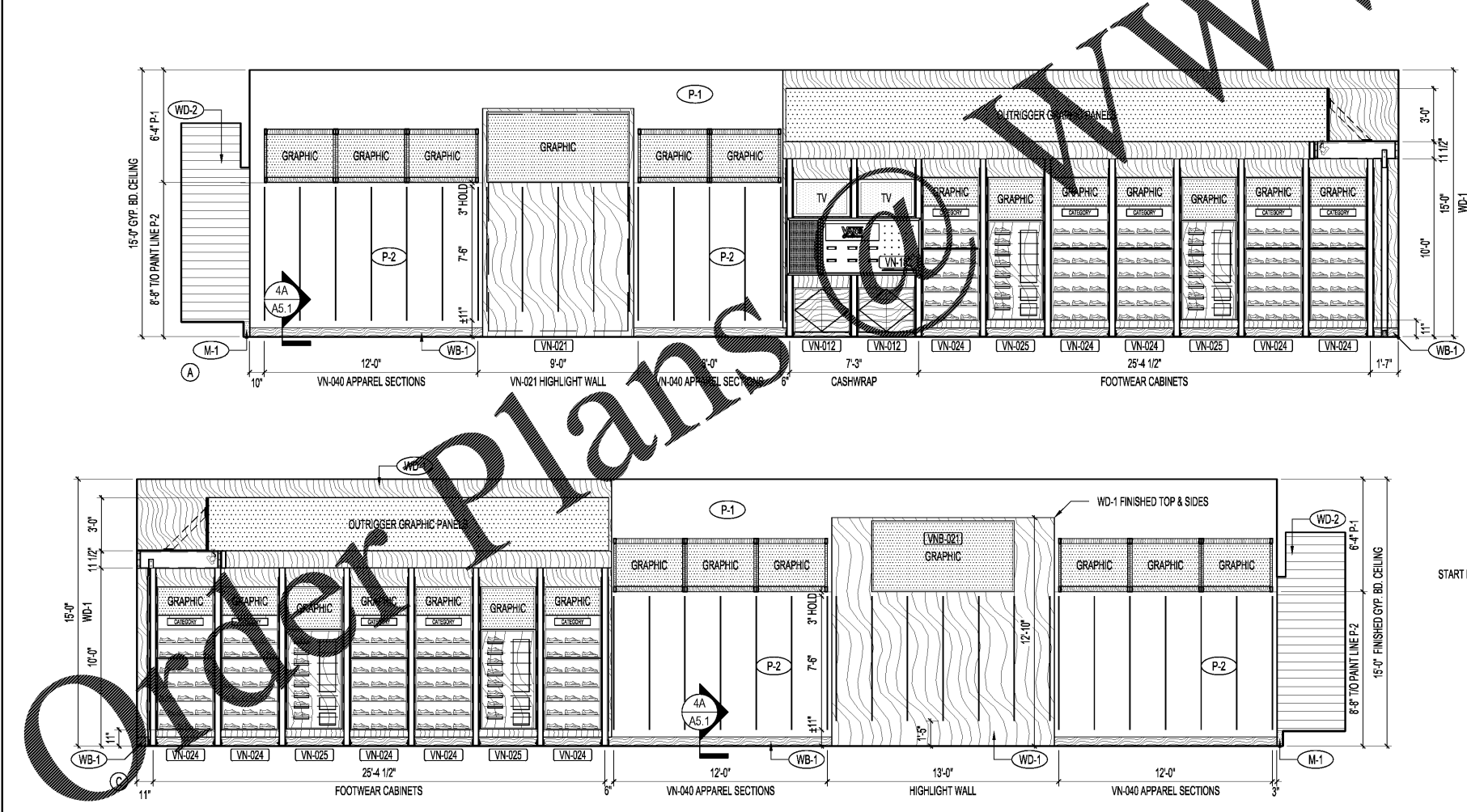
SCALE 3/8"=1'-0"

4 WOOD BASE DETAIL

SCALE 3/8"=1'-0"

2 ELEVATIONS - HALLWAY #2

SCALE 1/4"=1'-0"



1 ELEVATIONS - SALES

SCALE 1/4"=1'-0"

THE ABOVE DRAWINGS AND SPECIFICATIONS AND DEAS, DESIGNS AND ARRANGEMENTS REPRESENTED THEREIN ARE AND SHALL REMAIN THE PROPERTY OF THIS OFFICE AND NO PART THEREOF SHALL BE COPIED, DISCLOSED TO OTHERS OR USED IN THE CONNECTION WITH ANY WORK OR PROJECT OTHER THAN THE SPECIFIC PROJECT FOR WHICH THEY HAVE BEEN PREPARED AND DEVELOPED WITHOUT THE WRITTEN CONSENT OF THIS OFFICE. VERBAL CONTACT WITH THESE DRAWINGS OR SPECIFICATIONS SHALL CONSTITUTE CONCLUSIVE EVIDENCE OF ACCEPTANCE OF THESE RESTRICTIONS. WRITTEN DIMENSIONS ON THESE DRAWINGS SHALL HAVE PRECEDENCE OVER SCALED DIMENSIONS. CONTRACTORS SHALL VERIFY AND BE RESPONSIBLE FOR ALL DIMENSIONS AND CONDITIONS ON THE JOB AND THIS OFFICE MUST BE NOTIFIED OF ANY VARIATIONS FROM THE DIMENSIONS AND CONDITIONS SHOWN BY THESE DRAWINGS. SHOP DETAILS MUST BE SUBMITTED TO THIS OFFICE FOR APPROVAL BEFORE PROCEEDING WITH FABRICATION.

**VANS**  
 "OFF THE WALL" SINCE 1966  
 VANS #522  
 AVENTURA MALL  
 19501 BISCAYNE BLVD  
 SPACE #331  
 AVENTURA, FL 33180

INTERIOR ELEVATIONS AND WALL COVERING FINISHES

DRAWN BY AC  
 CHECKED BY KK  
 JOB NUMBER 17182-522

SHEET NAME A-5.1