

REVISIONS	DATE
ISSUE FOR CLIENT AND LANDLORD	11/1/2017
ISSUE FOR PERMIT	11/17/2017
ISSUE FOR BID - REV 1	11/27/2017

**robert g. lyon + associates, inc.**  
 retail architecture  
 5100 S. Schiller Park, IL 60176  
 Schiller Park, IL 60176  
 p: 847.671.7452  
 f: 847.671.4200  
 www.rgla.com

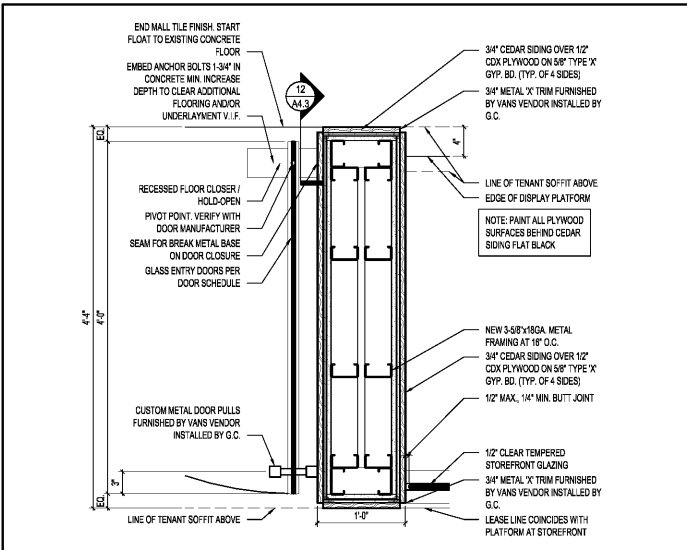
THE ABOVE DRAWINGS AND SPECIFICATIONS AND CEAS, DESIGN AND ARRANGEMENTS REPRESENTED THEREIN ARE AND SHALL REMAIN THE PROPERTY OF THIS OFFICE AND NO PART THEREOF SHALL BE COPIED, DISCLOSED TO OTHERS OR USED IN THE CONNECTION WITH ANY WORK OR PROJECT OTHER THAN THE SPECIFIC PROJECT FOR WHICH THEY HAVE BEEN PREPARED AND DEVELOPED WITHOUT THE WRITTEN CONSENT OF THIS OFFICE. VERBAL CONTACT WITH THESE DRAWINGS OR SPECIFICATIONS SHALL CONSTITUTE CONCLUSIVE EVIDENCE OF ACCEPTANCE OF THESE RESTRICTIONS. WRITTEN DIMENSIONS ON THESE DRAWINGS SHALL HAVE PRECEDENCE OVER SCALED DIMENSIONS. CONTRACTORS SHALL VERIFY AND BE RESPONSIBLE FOR ALL DIMENSIONS AND CONDITIONS ON THE JOB AND THIS OFFICE MUST BE NOTIFIED OF ANY VARIATIONS FROM THE DIMENSIONS AND CONDITIONS SHOWN BY THESE DRAWINGS. SHOP DETAILS MUST BE SUBMITTED TO THIS OFFICE FOR APPROVAL BEFORE PROCEEDING WITH FABRICATION.

©2017 RGLA SOLUTIONS, INC.  
 ©2017 ROBERT G. LYON + ASSOCIATES, INC.

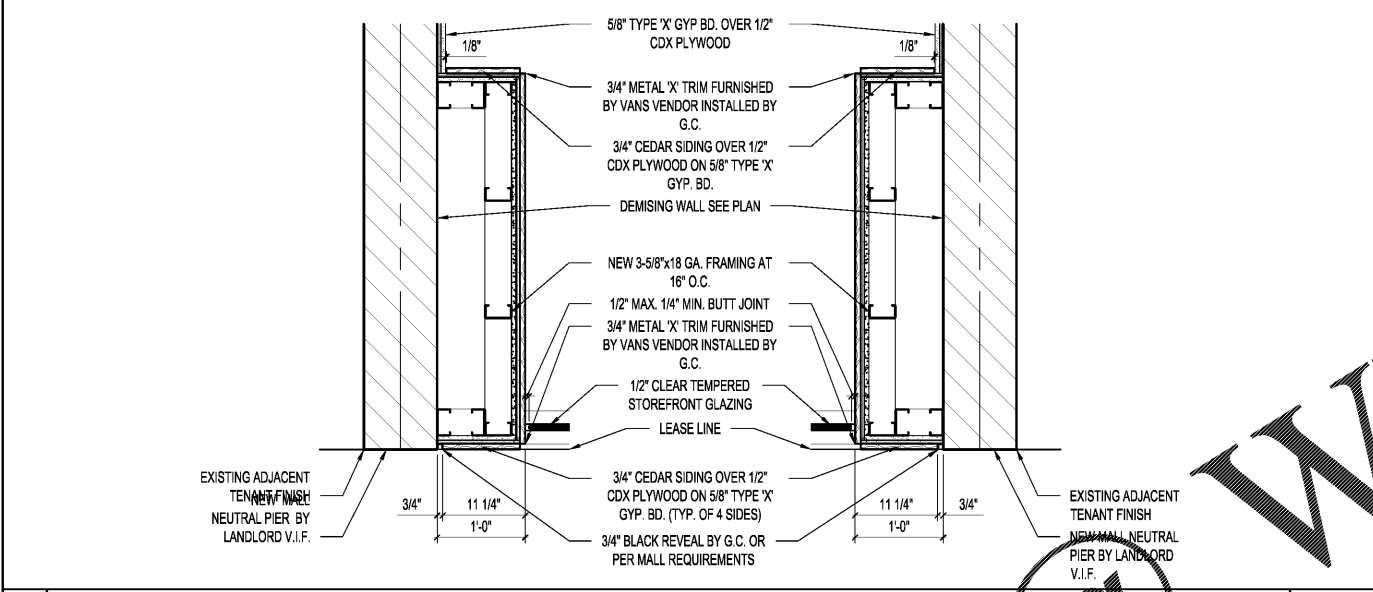
**VANS**  
 "OFF THE WALL" SINCE 1966  
 VANS #522  
 AVENTURA MALL  
 19501 BISCAYNE BLVD  
 SPACE #331  
 AVENTURA, FL 33180

STOREFRONT SECTIONS  
 DRAWN BY  
 AC  
 CHECKED BY  
 KK  
 JOB NUMBER  
 17182-522  
 SHEET NAME

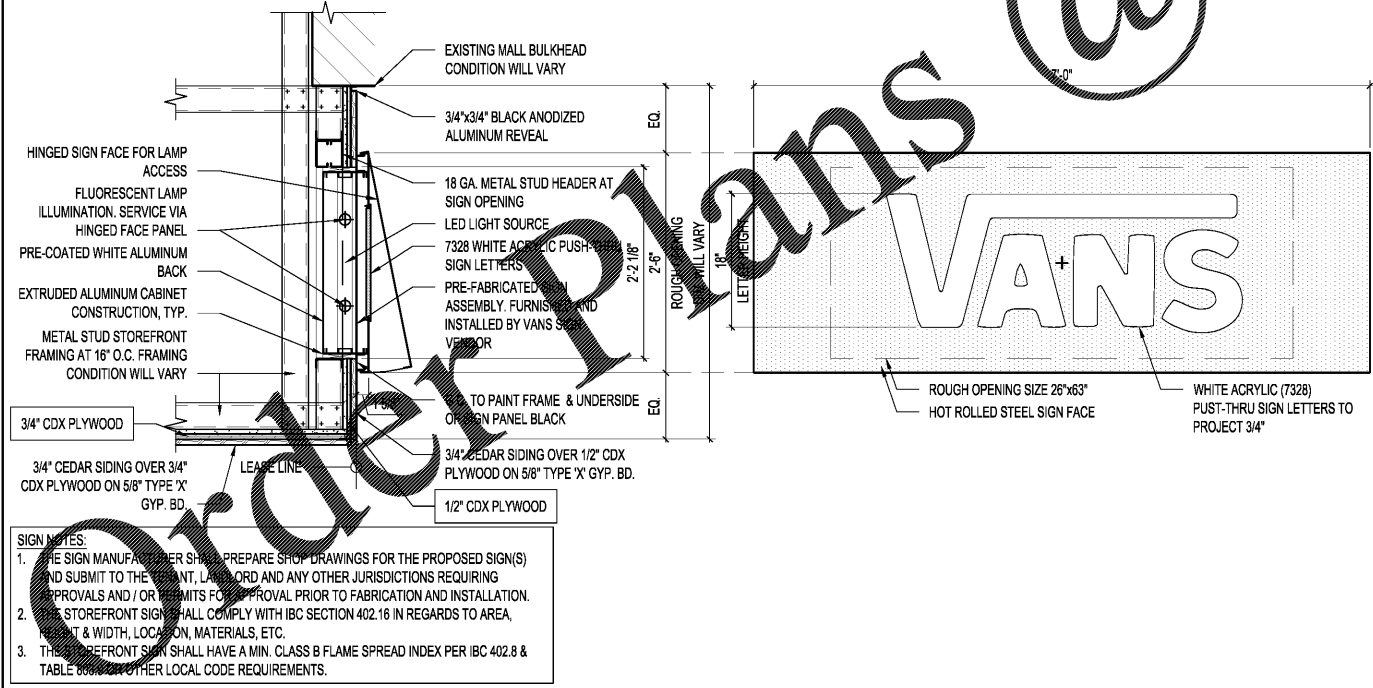
A-4.2



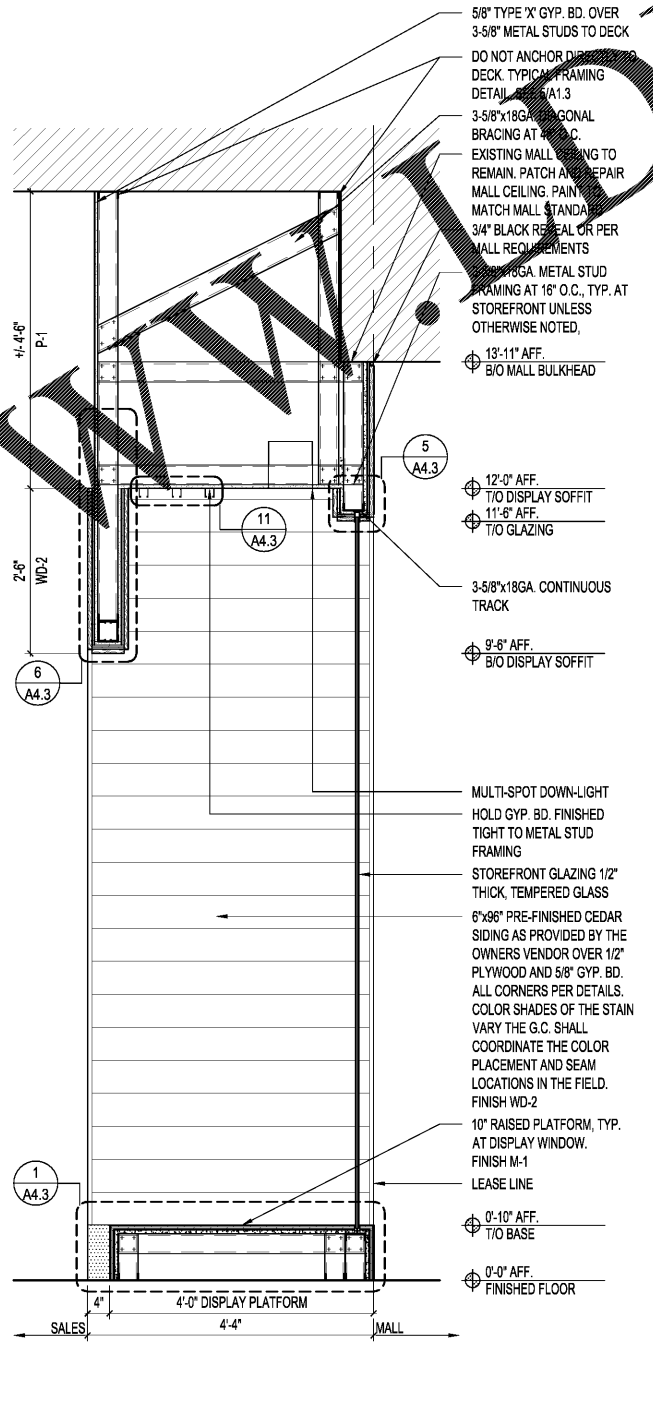
5 STOREFRONT JAMB AT ENTRY PORTAL



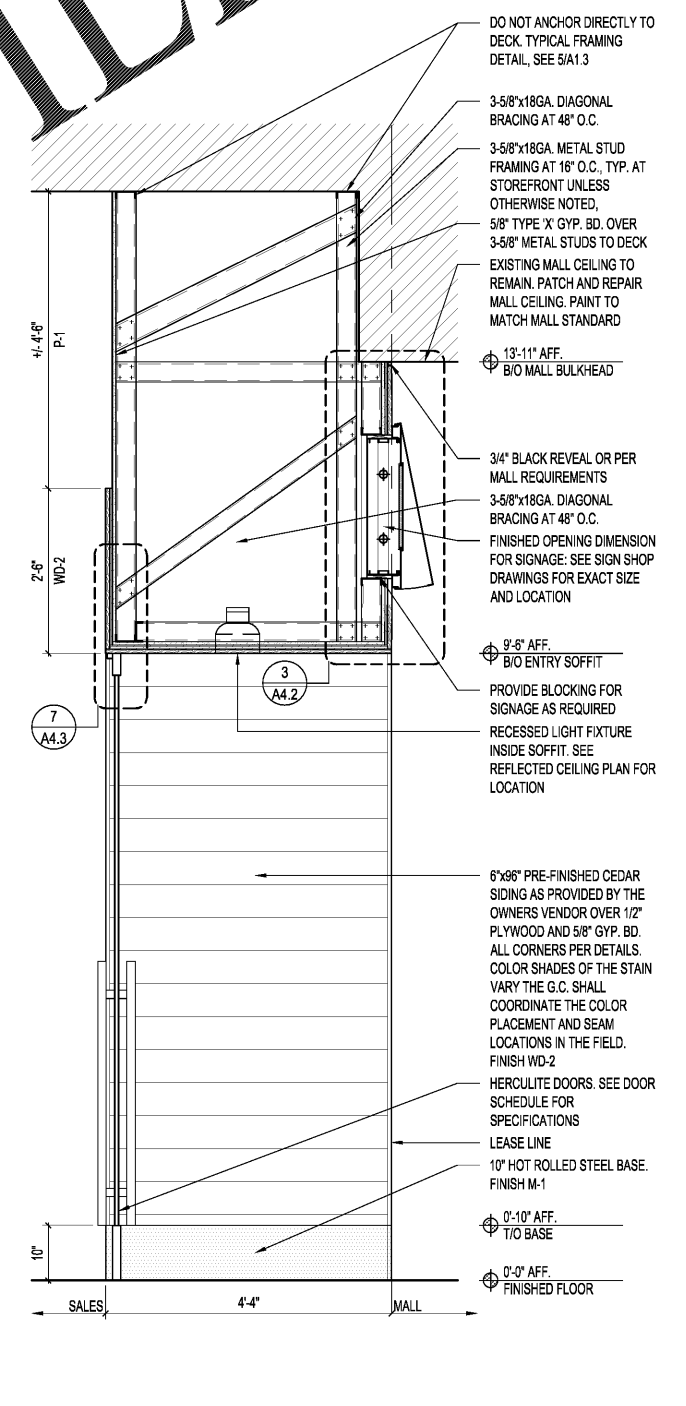
4 STOREFRONT JAMB AT MALL NEUTRAL PIERS



3 STOREFRONT SIGN DETAIL



2 STOREFRONT SECTION AT DISPLAY WINDOW



1 STOREFRONT SECTION AT ENTRY