

- NOTES:
- ENTRY SOFFIT AT 9'-6" AFF. FINISH WD-2
  - PROVIDE J-BOX FOR TENANT SIGN. SEE ELECTRICAL DRAWINGS
  - DISPLAY WINDOW HEADER AT 9'-6" AFF.
  - NIGHT-LIGHT FIXTURE, SEE ELECTRICAL LIGHTING PLAN
  - NIGHT-LIGHT AND EMERGENCY BALLAST LIGHT FIXTURE. SEE ELECTRICAL LIGHTING PLAN
  - EMERGENCY BALLAST LIGHT FIXTURE. SEE ELECTRICAL LIGHTING PLAN
  - CENTER LIGHT FIXTURE IN SPACE
  - EXHAUST FAN CENTERED OVER WATER CLOSET
  - SEE DETAIL 3/A-22 FOR LAYOUT LOCATIONS
  - CUT TRACK TO FIT
  - ALL SPRINKLER HEADS AT STOREFRONT & OTHER GYP BD. SOFFITS TO BE CONCEALED HEAD TYPE W/ COVER PLATES TO MATCH ADJACENT SURFACE COLOR
  - TRAFFIC COUNTER MOUNTED BELOW EXIT SIGN. SEE DETAIL 8/A4.3

- NOTES:
- ELECTRICAL CONTRACTOR TO PROVIDE AND INSTALL O.S. - OCCUPANCY SENSOR SWITCHES AT FITTING ROOMS AND TOILET ROOMS. SEE ELECTRICAL PLANS FOR MORE INFORMATION
  - SOUND SYSTEM TO BE INSTALLED BY TENANT'S CONTRACTOR. MAIN UNIT TO BE LOCATED IN LOW VOLTAGE RACK. SEE PROJECT DIRECTORY FOR VENDOR CONTACT INFO. VERIFY REQUIREMENTS WITH OWNER AND OWNER VENDOR
  - ELECTRICAL CONTRACTOR TO VERIFY LIGHTING IS IN WORKING CONDITION WHEN JOB IS COMPLETE
  - ELECTRICAL CONTRACTOR DOES NOT NEED TO BID LIGHT FIXTURES. ALL LIGHT FIXTURES ARE PROVIDED BY OWNER
  - ELECTRICAL CONTRACTOR TO PROVIDE AND INSTALL THREADED RIGID CONDUIT FOR (NEW) HI-BAY LIGHTS
  - NO DUCTWORK, PIPING, CONDUIT, ETC. SHALL BE SUSPENDED OR ATTACHED TO THE FLOOR DECK AND/OR ROOF DECK. ALL SUCH ITEMS MUST BE SUSPENDED ONLY FROM JOISTS AND/OR BEAMS
  - ALL SPRINKLER HEADS AT OPEN CEILING TO BE TURNED FACING UP AT 13'-0" AFF.
  - ALL SPRINKLER HEADS AT STOREFRONT & OTHER GYP BD. SOFFITS TO BE CONCEALED HEAD TYPE W/ COVER PLATES TO MATCH ADJACENT SURFACE COLOR

- TRACK LIGHT (LUX BEAM) INSTALLATION GUIDELINES
- ALL FIXTURES MAY NOT BE USED ON ALL PROJECTS
  - MANUFACTURE TO PROVIDE PERMANENT PRE-PAINT MAXIMUM RE-LAMPING LABEL PER LIGHTING FIXTURE SCHEDULE
  - PROVIDE ELECTRIC NORMAL OUTPUT INSTANT START BALLAST

2 PLAN KEY NOTES

3 REFLECTED CEILING PLAN NOTES

- NOTE:  
SEE SHEET A-2.2 FOR ADDITIONAL LIGHT FIXTURE MOUNTING HEIGHTS
- NOTE:  
ALL LIGHTING, INCLUDING SALES, STOCK, AND SIGNAGE, IS TO BE ON THE TIME CLOCK. TIMER WILL BE SET FOR 9AM - 11PM M-SAT, AND 9AM - 8PM SUNDAYS UNLESS OTHERWISE INSTRUCTED BY VANS PM. A TWO HOUR OVERRIDE WILL BE PROVIDED FOR USE EITHER BEFORE OR AFTER HOURS AND SHOULD OPERATE THE SALES AND STOCK LIGHTS TOGETHER. SWITCHES WILL BE USED TO SHUT OFF LIGHTS ON DAYS WHEN THE STORE IS NOT OPEN FOR BUSINESS.

- NOTE:  
NOTIFY OWNER AND ARCHITECT IMMEDIATELY IF LIGHT FIXTURES AND CEILING HEIGHTS ARE NOT ACHIEVABLE

- NOTE:  
AT LEAST 75% OF PERMANENTLY INSTALLED LIGHTING FIXTURES SHALL BE HIGH EFFICACY LAMPS PER FEC.

4 LIGHT FIXTURE SCHEDULE NOTES

- TRACK LIGHT (LUX BEAM) INSTALLATION GUIDELINES
- FOR COMPLETE INSTALLATION INSTRUCTIONS, PLEASE SEE CON-TECH LIGHTING'S INSTALLATION GUIDE THAT CAN BE PROVIDED BY CSI UPON REQUEST.
  - LUX BEAM IS SUPPLIED IN 4', 6', 8' AND 12' SECTIONS AND EACH SECTION COMES PREASSEMBLED WITH A LIVE END. CSI WILL SUPPLY THE LEAST # OF PIECES REQUIRED TO MEET THE RUNS NEEDS. FOR EXAMPLE, A 72' RUN WILL BE SHIPPED AS 6 PCS OF 12' LUX BEAM.
  - LUX BEAM DOES NOT REQUIRE UNISTRUT OR OTHER STRUCTURAL SUPPORT SYSTEM.
  - LUX BEAM IS SUSPENDED WITH EITHER AIRCRAFT CABLE (SUPPLIED BY CSI) OR THREADED ROD (SUPPLIED BY EC) AT EACH JUNCTION WHERE ONE SECTION MEETS ANOTHER OR AT EACH END IF ONLY A SINGLE PIECE OF LUX BEAM IS USED. SEE BELOW EXAMPLES

- 4' SECTION 2 SUPPORTS
  - 8' SECTION 2 SUPPORTS
  - 12' SECTION 2 SUPPORTS
  - 20' SECTION 3 SUPPORTS-1 AT EACH END AND 1 WHERE THE 8' AND 12' SECTIONS JOIN
  - 60' SECTION 5 SUPPORTS-1 AT EACH END AND 4 WHERE EACH SECTION OF 12' LUX BEAM MEETS WITH ANOTHER
- POWER FEEDS ARE SUPPLIED BY CSI PER THE DRAWINGS AND MOUNT TO A J-BOX PROVIDED BY THE ELECTRICAL CONTRACTOR.

TAG	SYMBOL	DESCRIPTION	MANUFACTURE	MODEL NUMBER	LAMP TYPE	WATTAGE	VOLTAGE
A	⊙	12" LED PENDANT WITH METAL REFLECTOR, BLACK FINISH. BOTTOM OF LIGHT FIXTURE AT 13'-0"	CONTECH	CGL128230KMVD2CMFC-B	(1) 50 WATT MULTI-CHIP LED ARRAY	50W	120V
B2	⊙	RECESSED ADJUSTABLE COMPARTMENTAL LIGHT FIXTURE HOUSING, BLACK FINISH	CONTECH	RAM15038-X2-B	(2) GREEN CREATIVE PAR 38 18.5PAR38G40IM930NF25/B	37W	120V
B3	⊙	RECESSED ADJUSTABLE COMPARTMENTAL LIGHT FIXTURE HOUSING, BLACK FINISH	CONTECH	RAM15038-X3-B	(3) GREEN CREATIVE PAR 38 18.5PAR38G40IM930NF25/B	55.5W	120V
B4	⊙	RECESSED ADJUSTABLE COMPARTMENTAL LIGHT FIXTURE HOUSING, BLACK FINISH	CONTECH	RAM15038-X4-B	(4) GREEN CREATIVE PAR 38 18.5PAR38G40IM930NF25/B	74W	120V
C	⊙	RECESSED ADJUSTABLE COMPARTMENTAL LIGHT FIXTURE HOUSING, CLEAR TRIM FINISH	CONTECH	RL-38-CTR3802-CLR	(1) GREEN CREATIVE PAR 38 18.5PAR38G40IM930NF25/B	18.5W	120V
C1	⊙	RECESSED ADJUSTABLE COMPARTMENTAL LIGHT FIXTURE HOUSING, BLACK TRIM FINISH	CONTECH	RL-38-CTR3802-BLK	(1) GREEN CREATIVE PAR 38 18.5PAR38G40IM930NF25/B	18.5W	120V
D	—	CONTECH LT SERIES TRACK SECTION (LENGTH PER PLAN). SPECIFY CURRENT LIMITER PANEL WHEN REQUIRED PER CODE - BLACK FINISH	CONTECH	LT SERIES	N/A	N/A	N/A
E1	⊙	16" Ø WIRE GRID PENDANT FIXTURE - BOTTOM OF LIGHT FIXTURE AT 6'-8" AFF.	HI LITE	H-SQGR-16-RSC/CBW12-RS C	(1) LEDTRONICS DEC-G30-XV-120A	0.9W	120V
E2	⊙	12" Ø WIRE GRID PENDANT FIXTURE - BOTTOM OF LIGHT FIXTURE AT 7'-6" AFF.	HI LITE	H-SQGR-12-RSC/CBW12-RS C	(1) LEDTRONICS DEC-G30-XV-120A	0.9W	120V
E3	⊙	16" Ø WIRE GRID PENDANT FIXTURE - BOTTOM OF LIGHT FIXTURE AT 7'-8" AFF.	HI LITE	H-SQGR-16-RSC/CBW12-RS C	(1) TOP 42W CFL 48942	42W	120V
F	⊙	ADJUSTABLE LED TRACK FIXTURE WITH BLACK FINISH	CONTECH	CTL8300	(1) GREEN CREATIVE PAR 38 18.5PAR38G40IM930NF25/B	18.5W	120V
H4	—	4' FLUORESCENT OPEN STRIP LIGHT SUSPEND OR SURFACE MOUNT PER PLAN. EM=PROVIDE EMERGENCY BATTERY BACK - NL=CONNECT TO NIGHT-LIGHT CIRCUIT - INCLUDE WIRE GUARD	SIMKAR	CH2232-B11-UNV	(2) PHILIPS F32T8 TL830 ALTO II 32W T8	64W	120V
H8	—	8' FLUORESCENT OPEN STRIP LIGHT SUSPEND OR SURFACE MOUNT PER PLAN. EM=PROVIDE EMERGENCY BATTERY BACK - NL=CONNECT TO NIGHT-LIGHT CIRCUIT - INCLUDE WIRE GUARD	SIMKAR	CH2232-B11-UNV	(4) PHILIPS F32T8 TL830 ALTO II 32W T8	128W	120V
LB	—	BLACK TRACK HOUSING "LUX" BEAM (LENGTH PER PLAN) WITH CONTECH LT SERIES TRACK SECTION OF MATCHING LENGTH. SPECIFY CURRENT LIMITER PANEL WHEN REQUIRED PER CODE - BLACK FINISH	CONTECH	LB122 SERIES	N/A	N/A	N/A
X	—	SURFACE MOUNTED THERMOPLASTIC EXIT - WHITE WITH RED LETTERS	BEST LIGHTING	EZXTEU1RW	LED INCLUDED	3.2W	120V
X1	—	SURFACE MOUNTED EDGE LIT EXIT SIGN WITH UNIVERSAL MOUNTING CANOPY - CLEAR PANEL - RED LETTERS	BEST LIGHTING	ELXTEU1RCAEM	3.2 LED INCLUDED	3.2W	120V
Y	—	SURFACE MOUNTED BLACK EMERGENCY LIGHT WITH SEALED BATTERY BACKUP	BEST LIGHTING	R-1B	(2) 5.2 LED INCLUDED	10.8W	120V
EF	⊙	RECESSED EXHAUST FAN - SEE MECHANICAL SHEETS	SEE MECHANICAL SHEETS	SEE MECHANICAL SHEETS	SEE MECHANICAL SHEETS	N/A	N/A

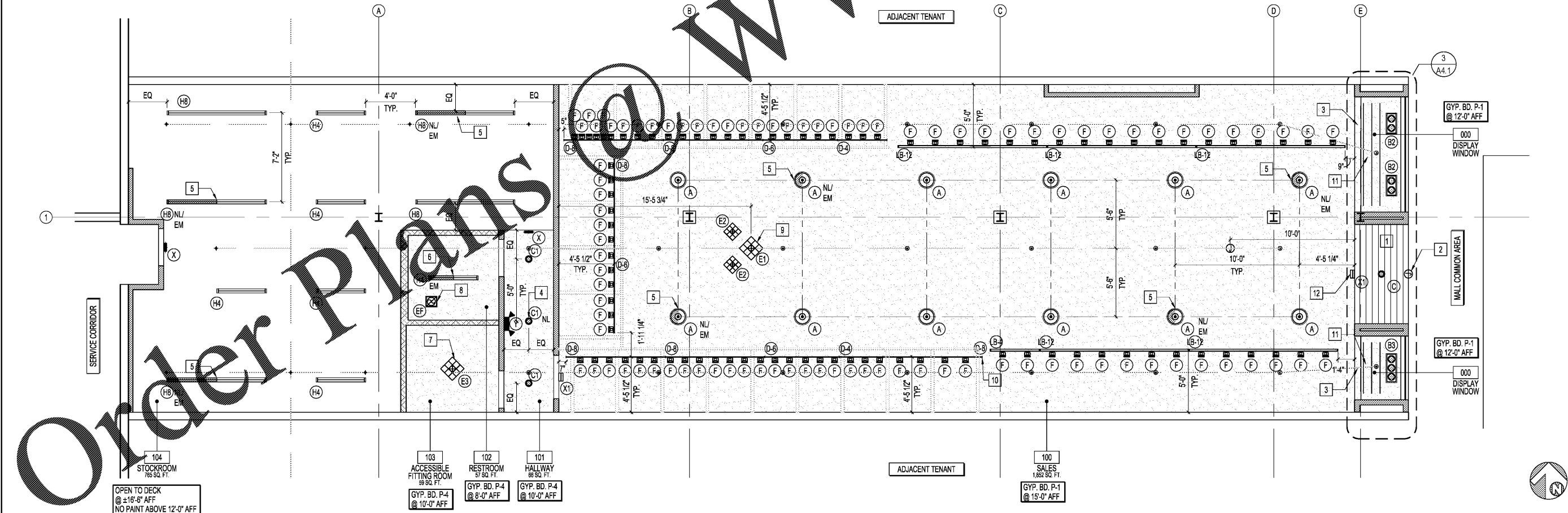
5 TRACK INSTALL NOTES

6 LIGHT FIXTURE SCHEDULE

- NOTE:  
ALL SPRINKLER HEADS SHOULD BE OF THE QUICK RESPONSE TYPE.
- FIRE SPRINKLER HEAD LOCATIONS SHOWN ARE FOR CONCEPTUAL DESIGN ONLY. THE EXACT SIZE, TYPE AND LOCATION OF ALL THE FIRE SPRINKLER SYSTEM AND ITS COMPONENTS INCLUDING RISERS, MAINS, BRANCH LINES AND HEAD TYPES SHALL BE DESIGNED BY A LICENSED ENGINEER. REFER TO COMPLETE PERFORMANCE SPECIFICATIONS AND SPRINKLER SHOP DRAWINGS FOR SCOPE OF WORK.

SYMBOL LEGEND

- ⊙ CONCEALED SPRINKLER HEAD
- ⊕ UPRIGHT SPRINKLER HEAD



1 REFLECTED CEILING PLAN

SCALE: 1/4"=1'-0"

**RGLA**  
rgla solutions, inc.  
10011 W. 111th St., Suite 100  
Overland Park, KS 66213  
p: 847.671.7452  
f: 847.671.4200  
www.rgla.com

REVISIONS

NO.	DATE	DESCRIPTION
1	11/1/2017	ISSUE FOR PERMIT AND LANDLORD
2	11/17/2017	ISSUE FOR PERMIT
3	11/27/2017	ISSUE FOR BID - REV 1

**robert g. lyon + associates, inc.**  
retail architecture  
5100 W. 111th St., Suite 100  
Overland Park, KS 66213  
p: 847.671.7452  
f: 847.671.4200  
www.rgla.com

THE ABOVE DRAWINGS AND SPECIFICATIONS AND CEILING HEIGHTS AND ARRANGEMENTS REPRESENTED THEREIN ARE AND SHALL REMAIN THE PROPERTY OF THIS OFFICE AND NO PART THEREOF SHALL BE COPIED, DISCLOSED TO OTHERS OR USED IN THE CONNECTION WITH ANY WORK OR PROJECT OTHER THAN THAT SPECIFICALLY IDENTIFIED IN THESE DRAWINGS OR SPECIFICATIONS WITHOUT THE WRITTEN CONSENT OF THIS OFFICE. VISUAL CONTACT WITH THESE DRAWINGS OR SPECIFICATIONS SHALL CONSTITUTE CONVICTION OF VIOLATION OF THESE RESTRICTIONS.

WRITTEN DIMENSIONS ON THESE DRAWINGS SHALL HAVE PRECEDENCE OVER SCALED DIMENSIONS. CONTRACTORS SHALL VERIFY AND BE RESPONSIBLE FOR ALL DIMENSIONS AND CONDITIONS ON THE JOB AND THIS OFFICE MUST BE NOTIFIED OF ANY VARIATIONS FROM THE DIMENSIONS AND CONDITIONS SHOWN IN THESE DRAWINGS. SHOP DETAILS MUST BE SUBMITTED TO THIS OFFICE FOR APPROVAL BEFORE PROCEEDING WITH FABRICATION.

©2017 RGLA SOLUTIONS, INC.  
©2017 ROBERT G. LYON + ASSOCIATES, INC.

**VANS**  
"OFF THE WALL" SINCE 1966  
VANS #522  
AVENTURA MALL  
19501 BISCAYNE BLVD  
SPACE #331  
AVENTURA, FL 33180

REFLECTED CEILING PLAN AND LEGEND

DRAWN BY: AC  
CHECKED BY: KK  
JOB NUMBER: 17182-522  
SHEET NAME: A-2.1