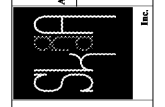


FFPA ARCHITECTURE
 STUDIO
 1600 PAULINA AVENUE SUITE H1
 BAYOU ROUGE, LA 70009
 504.885.7400

IMEG
 12710 RESEARCH BLVD
 SUITE 305
 HOUSTON, TX 77078
 PH: 281.416.1864
 FAX: 281.416.1847
 WWW.IMEG.COM
 IMEG PROJECT # 1607050

Prairville General Hospital
 37358 Market Place Dr.
 Prairieville, LA 70769

Shawn Kestner and Associates
 Robert C. Murray, AIA
 Architects & Construction Services
 15400 Redwood Rd., Ste. 202
 Houston, TX 77033
 PH: 281.696.5716
 FAX: 281.696.5716
 Email: SKA@shawnk.com



Project No. 1607050

Drawn: AG

Checked: -

Date: November 22, 2017

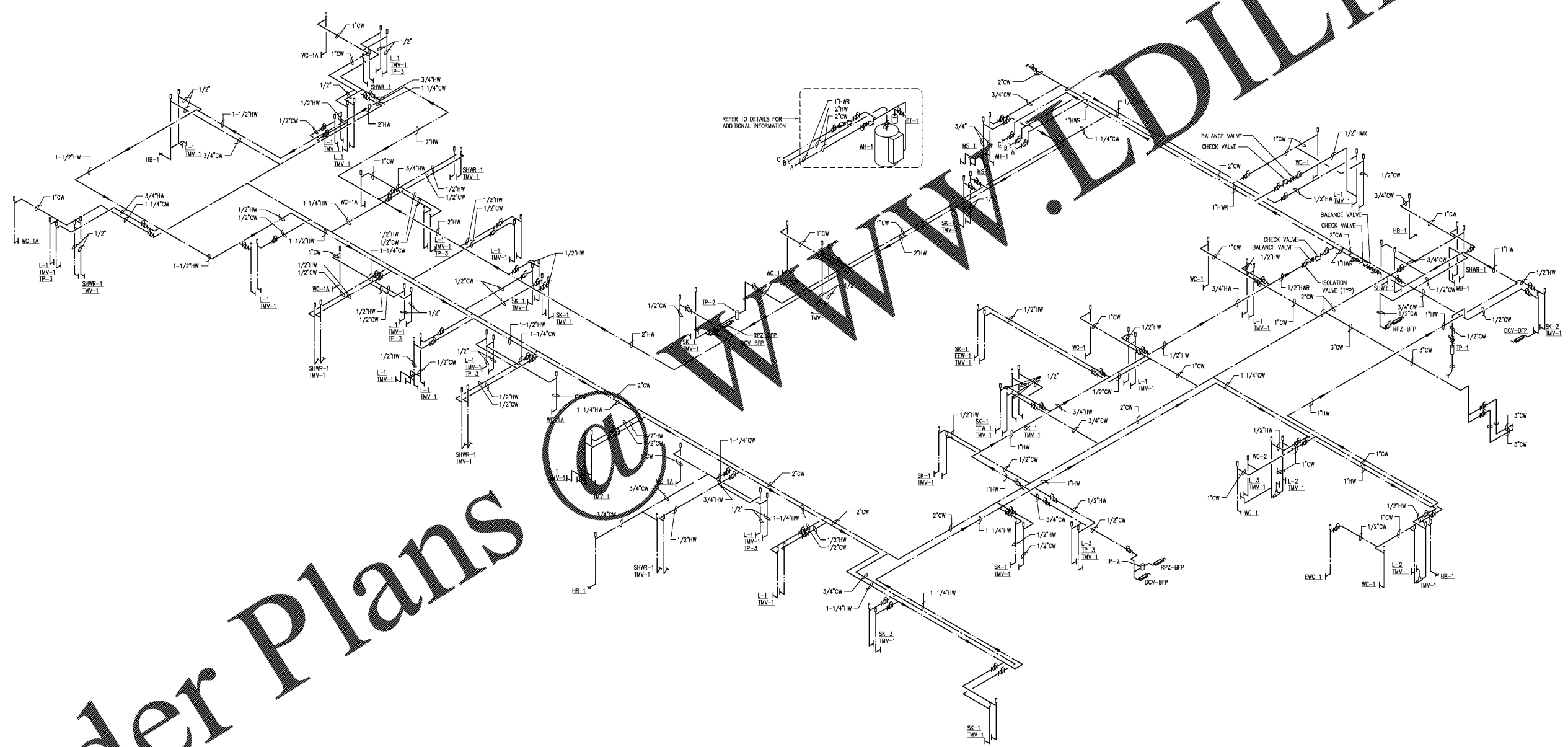
No.	Description	Date

CONSTRUCTION REISSUE SET

P302
 PLUMBING
 RISERS

Order Plans

1 PLUMBING - DOMESTIC WATER RISER
 SCALE: N.T.S.



WWW.LDLine.com