

FFPA AIR STUDIO
16600 BOBBEL AVENUE, SUITE H1
BATON ROUGE, LA 70809
713.383.7408

IMEG
17105 RESEARCH BLVD
SUITE 305
FAIRBORN, TX 78740
713.655.5716
www.imeg.com

Prairieville General Hospital
3738 Market Place Dr.
Prairieville, LA 70769

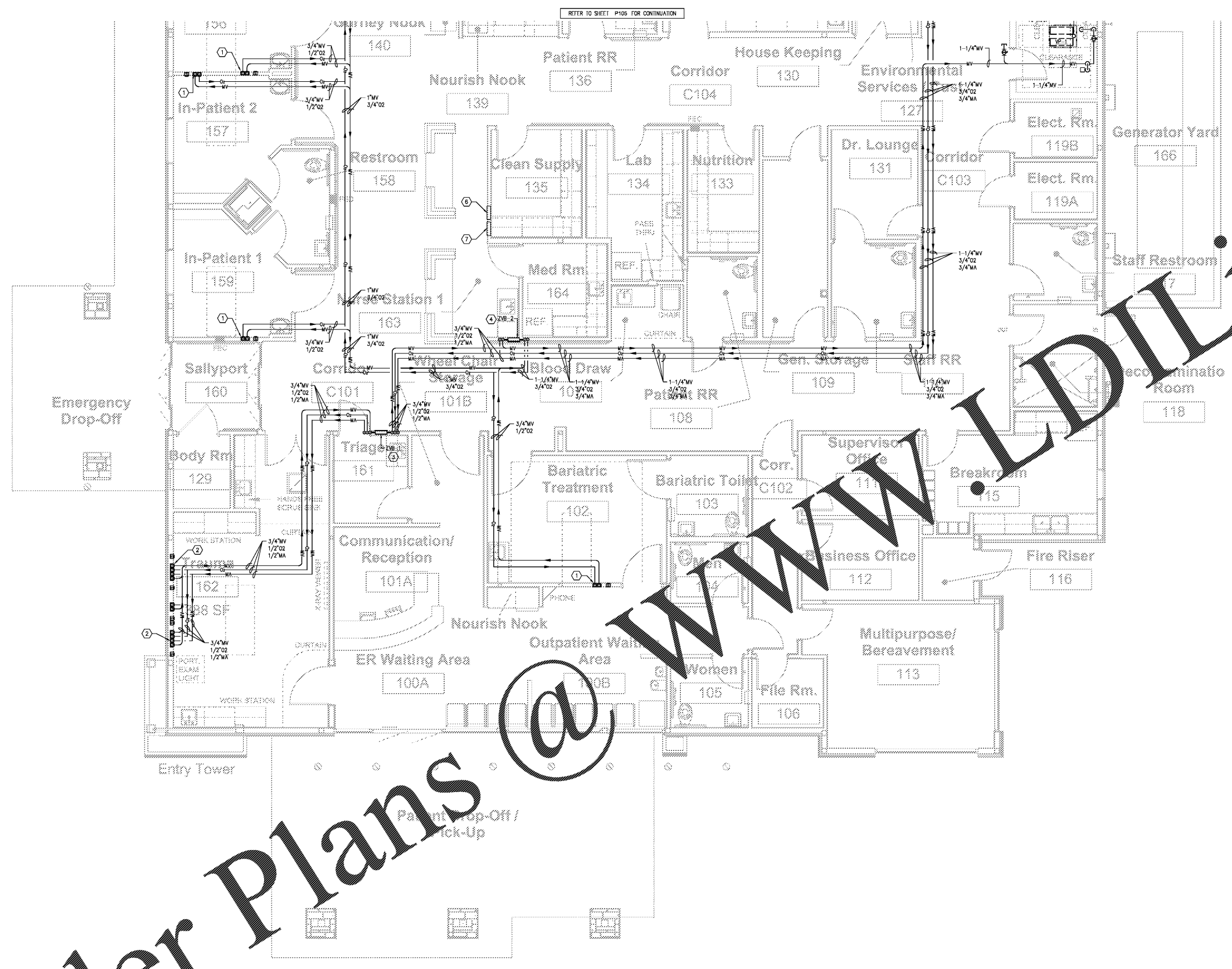
Shawn Kautera and Associates
Architects & Construction Services
13430 Woodloch Blvd., Ste. 202
Houston, TX 77040
Ph: 281.695.5716
Email: skk@shawnkautera.com



Project No. 1607050
Drawn: AG
Checked: -
Date: November 22, 2017

No.	Description	Date

CONSTRUCTION REISSUE SET
P106
PLUMBING
MEDICAL GAS



- KEYED NOTES - PLUMBING:**
- ROUTE OXYGEN AND VACUUM LINES DOWN TO MEDICAL GAS OUTLETS ON WALL. WALL OUTLETS SHALL BE BEACON MEDAFS SERIES B WITH PIN INDEX OUTLETS AND 5" DIE-CAST TRIM PLATES.
 - VACUUM OUTLET MODEL#: 12103-00
 - OXYGEN OUTLET MODEL#: 12103-00
 - SLIDE BRACKET MODEL#: 12103-00
 - COORDINATE FINAL LOCATION AND MOUNTING HEIGHT WITH OWNER PRIOR TO INSTALLATION. INSTALLATION SHALL BE PER CURRENT NFPA 99 REQUIREMENTS.
 - ROUTE OXYGEN, MEDICAL AIR AND VACUUM LINES DOWN TO MEDICAL GAS OUTLETS ON WALL. WALL OUTLETS SHALL BE BEACON MEDAFS SERIES B WITH PIN INDEX OUTLETS AND 5" DIE-CAST TRIM PLATES.
 - (3) MEDICAL AIR OUTLET MODEL#: 121033-00
 - (3) VACUUM OUTLET MODEL#: 120979-00
 - (2) OXYGEN OUTLET MODEL#: 121030-00
 - MEDICAL AIR OUTLET MODEL#: 121032-00
 - COORDINATE FINAL LOCATION AND MOUNTING HEIGHT WITH OWNER PRIOR TO INSTALLATION. INSTALLATION SHALL BE PER CURRENT NFPA 99 REQUIREMENTS.
 - ROUTE OXYGEN, MEDICAL AIR AND VACUUM LINES DOWN TO TRIPLE VALVE ZONE BOX ASSEMBLY. ASSEMBLY SHALL BE BEACON MEDAFS ZVB3-AAA COMPLETE WITH VALVES, GAUGES, PIPE LABELS AND WITH SENSOR PROVISIONS. VALVE ACCESS TO BE IN CORRIDOR AND LABELED WITH AREA BEING SERVED.
 - ROUTE OXYGEN AND VACUUM LINES DOWN TO DOUBLE VALVE ZONE BOX ASSEMBLY. ASSEMBLY SHALL BE BEACON MEDAFS ZVB2-BD COMPLETE WITH VALVES, GAUGES, PIPE LABELS AND WITH SENSOR PROVISIONS. VALVE ACCESS TO BE IN CORRIDOR AND LABELED WITH AREA BEING SERVED.
 - NOT USED.
 - TOTAL ALERT INFINITY MASTER ALARM PANEL. ALARM PANEL SHALL BE BEACON MEDAFS DIGITAL ELECTRONIC MASTER ALARM WITH REMOTE MONITORING CAPABILITIES FOR OXYGEN, MEDICAL AIR AND VACUUM. 13-MTD.
 - TOTAL ALERT INFINITY AREA ALARM PANEL. ALARM PANEL SHALL BE BEACON MEDAFS TOTAL ALERT INFINITY SYSTEM WITH OXYGEN/VACUUM/MEDICAL GAS MODULES FOR ZVB-1, ZVB-2 AND ZVB-3. 13-A10-0AV OV OV

1 PLUMBING - MEDICAL GAS PLAN
SCALE: 1/4" = 1'-0"

Order Plans @

WWW.LDILLING.COM