

Prairville General Hospital
 37358 Market Place Dr.
 Prairieville, LA 70769

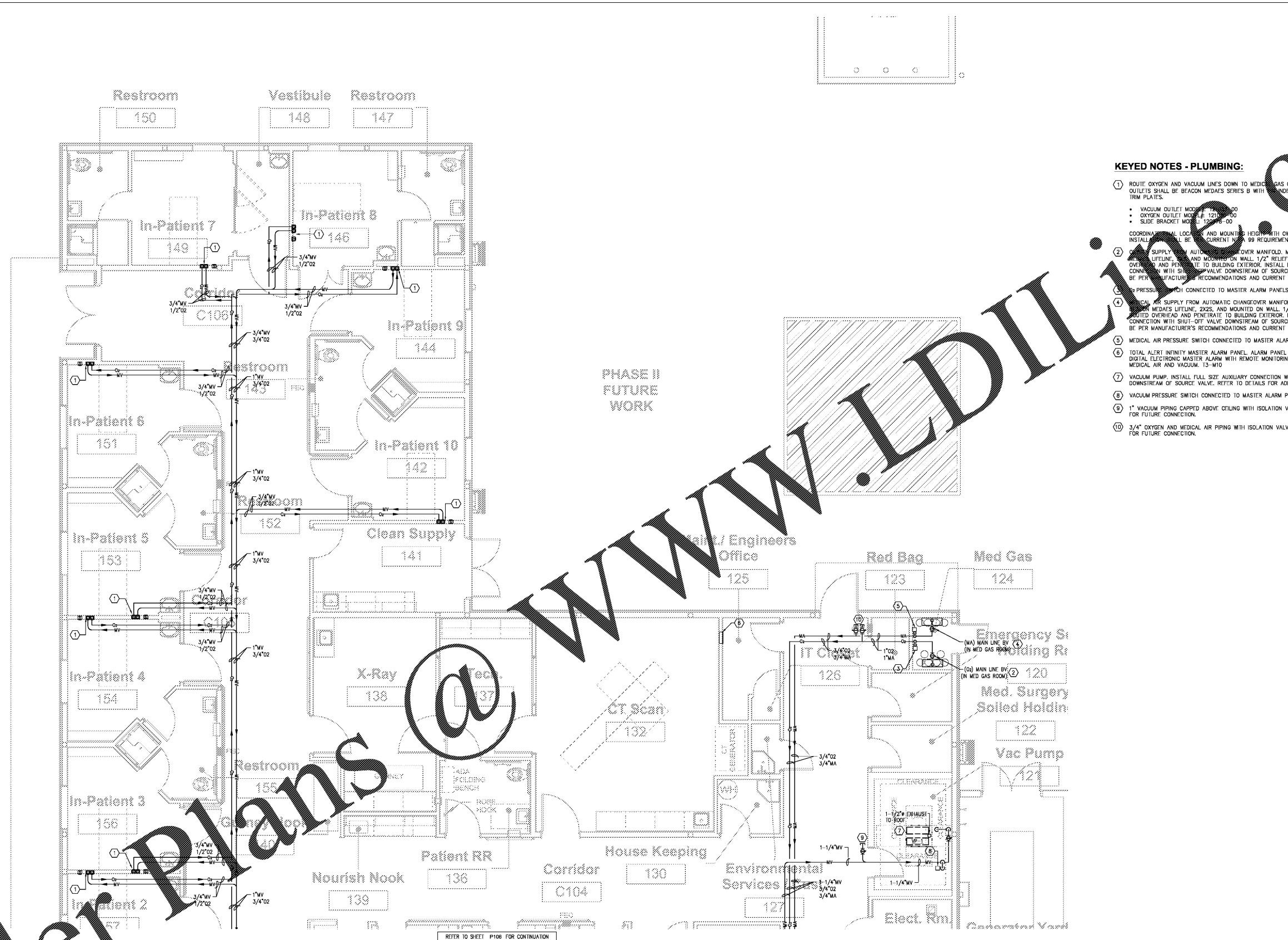
Shawn Kauter and Associates
 Robert C. Murray AIA
 Architects & Construction Services
 13458 Boudreaux Rd., Ste. 202
 Baton Rouge, LA 70817
 Ph: 225.496.5716
 Email: shawn@shawnkauter.com

CONSTRUCTION REISSUE SET

Project No. 1607050
 Drawn: AG
 Checked: -
 Date: November 22, 2017

No.	Description	Date

P105
 PLUMBING
 MEDICAL GAS



- KEYED NOTES - PLUMBING:**
- ROUTE OXYGEN AND VACUUM LINES DOWN TO MEDICAL GAS OUTLETS ON WALL. WALL OUTLETS SHALL BE BEACON MEDAES SERIES B WITH INDEX OUTLET AND 5" DIE-CAST TRIM PLATES.
 - VACUUM OUTLET MODEL: 121-100
 - OXYGEN OUTLET MODEL: 121-100
 - SLIDE BRACKET MODEL: 121-100
 - COORDINATE LOCATION AND MOUNTING HEIGHT WITH OWNER PRIOR TO INSTALLATION. INSTALLATION SHALL BE PER CURRENT NFPA 99 REQUIREMENTS.
 - OXYGEN SUPPLY FROM AUTOMATIC CHANGEOVER MANIFOLD. MANIFOLD SHALL BE BEACON MEDAES LIFELINE, 2X2S, AND MOUNTED ON WALL. 1/2" RELIEF VENT SHALL BE ROUTED OVERHEAD AND PENETRATE TO BUILDING EXTERIOR. INSTALL FULL SIZE AUXILIARY CONNECTION WITH SHUT-OFF VALVE DOWNSTREAM OF SOURCE VALVE. INSTALLATION SHALL BE PER MANUFACTURER'S RECOMMENDATIONS AND CURRENT NFPA 99 REQUIREMENTS.
 - PRESSURE SWITCH CONNECTED TO MASTER ALARM PANELS.
 - MEDICAL AIR SUPPLY FROM AUTOMATIC CHANGEOVER MANIFOLD. MANIFOLD SHALL BE BEACON MEDAES LIFELINE, 2X2S, AND MOUNTED ON WALL. 1/2" RELIEF VENT SHALL BE ROUTED OVERHEAD AND PENETRATE TO BUILDING EXTERIOR. INSTALL FULL SIZE AUXILIARY CONNECTION WITH SHUT-OFF VALVE DOWNSTREAM OF SOURCE VALVE. INSTALLATION SHALL BE PER MANUFACTURER'S RECOMMENDATIONS AND CURRENT NFPA 99 REQUIREMENTS.
 - MEDICAL AIR PRESSURE SWITCH CONNECTED TO MASTER ALARM PANELS.
 - TOTAL ALERT INFINITY MASTER ALARM PANEL, ALARM PANEL SHALL BE BEACON MEDAES DIGITAL ELECTRONIC MASTER ALARM WITH REMOTE MONITORING CAPABILITIES FOR OXYGEN, MEDICAL AIR AND VACUUM. 13-M10
 - VACUUM PUMP. INSTALL FULL SIZE AUXILIARY CONNECTION WITH SHUT-OFF VALVE DOWNSTREAM OF SOURCE VALVE. REFER TO DETAILS FOR ADDITIONAL INFORMATION.
 - VACUUM PRESSURE SWITCH CONNECTED TO MASTER ALARM PANELS.
 - 1" VACUUM PIPING CAPPED ABOVE CEILING WITH ISOLATION VALVE. CAPPED ABOVE CEILING FOR FUTURE CONNECTION.
 - 3/4" OXYGEN AND MEDICAL AIR PIPING WITH ISOLATION VALVE AND CAPPED ABOVE CEILING FOR FUTURE CONNECTION.

1 PLUMBING - MEDICAL GAS PLAN
 SCALE: 1/4" = 1'-0"

VACUUM SYSTEM SCHEDULE

MARK	LOCATION	CAPACITY @ 15" HG PUMP SYSTEM	NOISE LEVEL	MOTOR SIZE (HP)	SYSTEM BTU/HR	ELECTRICAL VOLTS PHASE HZ FLA	TANK SIZE (GAL)	NOTES
VP-1	VAC PUMP 136	10 10	70	2	4,072	208 3 60 12.6	30	BEACON VLV02D-030V-D

REMARKS:

- INSTALL FULL SIZE AUXILIARY CONNECTION WITH SHUT-OFF VALVE DOWNSTREAM OF SOURCE VALVE.
- EXHAUST SHALL COMBINE TO 1-1/2" COPPER DISCHARGE PIPE TO ROOF WITH EXHAUST MUFFLER.
- EQUIPMENT INSTALLATION SHALL MEET ALL CURRENT NFPA 99 REQUIREMENTS.

Order Plans @