



FFPA AIR STUDIO
 OFFICE: 1100 BOBELL AVENUE SUITE H1
 BAYON ROUGE, LOUISIANA 70009
 PHONE: (504) 835-7406

IMEG
 15716 RESEARCH BLVD
 SUITE 305
 HOUSTON, TX 77058
 PHONE: (281) 416-1662
 FAX: (281) 416-1947
 WWW.IMEG.COM
 IMEG PROJECT # 0016306

Prairieville General Hospital
 37358 Market Place Dr.
 Prairieville, LA 70769

Shawn Kesterson and Associates
 Robert C. Murray, P.E.
 Architectural & Construction Services
 13438 Boudreaux Ln., Ste. 202
 Houston, TX 77040
 Phone: 281.965.5716
 Fax: 281.965.5714
 Email: shawn@shawnkesterson.com



Project No. 1607050

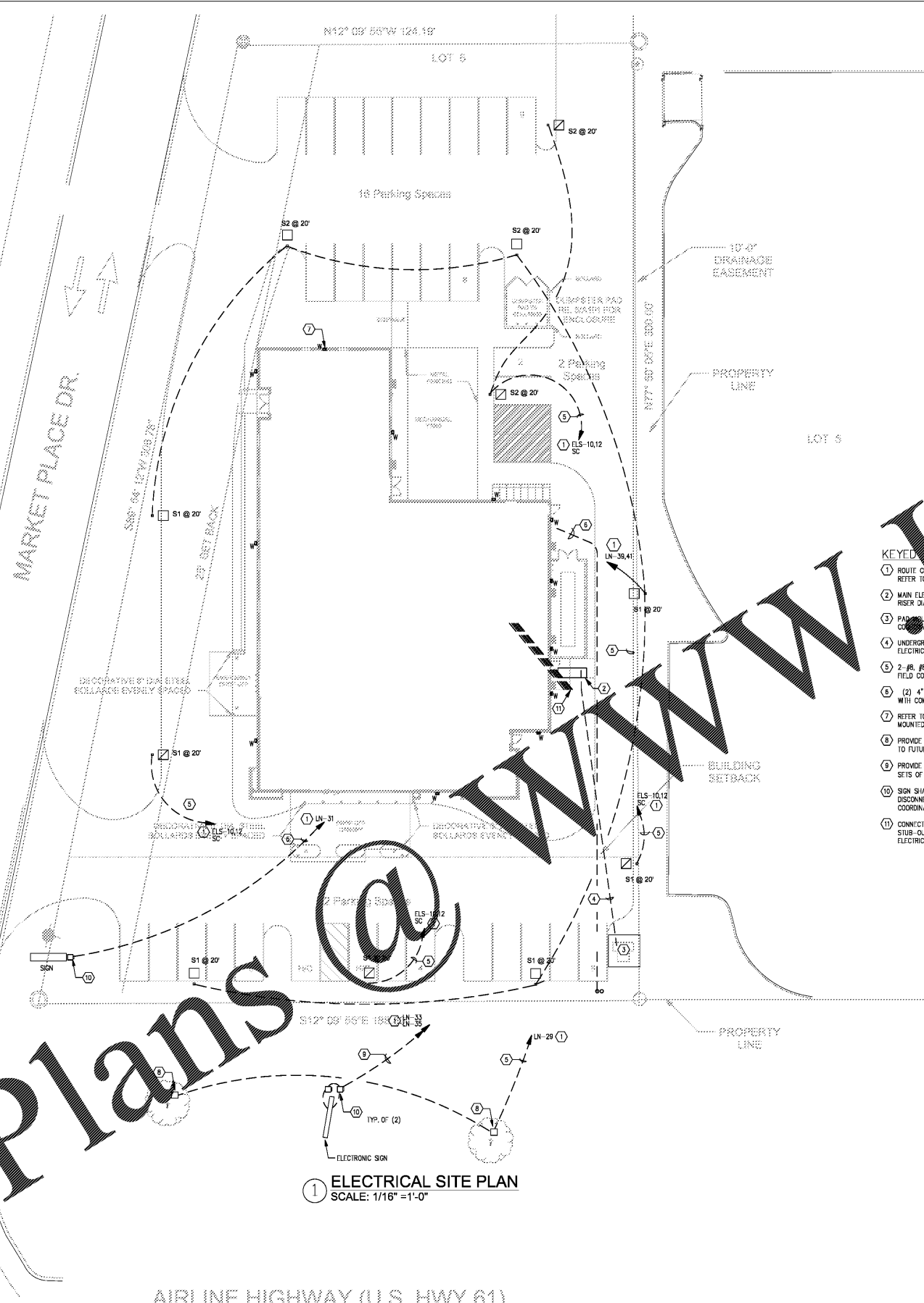
Drawn: TB

Checked:

Date: November 22, 2017

No.	Description	Date

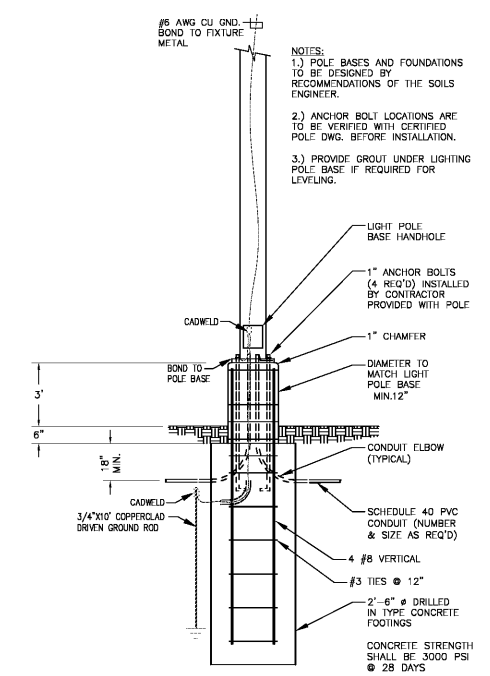
E401
 ELECTRICAL
 SITE PLAN



- KEYED NOTES:**
- ROUTE LIGHTING CONTROL PANEL 'L.C.' REFER TO RISER DIAGRAM SHEET E3.01.
 - MAIN ELECTRICAL PANEL BOARD. REFER TO ELEC. RISER DIAGRAM, SHEET E3.1.
 - PANEL UNITS ELECTRICAL TRANSFORMER & METERING. COORDINATE WITH ELECTRIC UTILITY.
 - UNDERGROUND SECONDARY DUCTBANK. REFER TO ELECTRICAL RISER DIAGRAM, SHEET E3.01.
 - 2- #6, #8, 1" SCH. 80 PVC C. FOR ALL SITE LIGHTING. FIELD COORDINATE ROUTING.
 - (2) 4" COMM. CABLE CONDUITS. COORDINATE ROUTING WITH COMM. UTILITIES.
 - REFER TO SHEETS E1.01 & E1.02 FOR BUILDING MOUNTED EXTERIOR LIGHTING CIRCUITS.
 - PROVIDE 12" X 12" IN-GRADE PULL BOX FOR POWER TO FUTURE TREE LIGHTING.
 - PROVIDE (2) 120V CIRCUITS FOR ELECTRONIC SIGN. (2) SETS OF 2- #6, WITH #8, 1" SCH. 80 PVC C.
 - SIGN SHALL BE EQUIPPED WITH LOCKABLE NEMA 3R DISCONNECT SWITCH, 30AS/NF/P 250V RATED. COORDINATE INSTALLATION WITH SIGN MANUFACTURER.
 - CONNECT SITE LIGHTING CONDUITS TO 1" CONDUIT SUB-OUPS FROM ELECTRICAL ROOM. REFER TO ELECTRICAL POWER PLAN, SHEET EP1.01.

Symbol	Label	Qty	Category Number	Description	# Lamps	Lamp	File	Lumens	LLF	Watts
□	S1	7	AS2 200M BRB8 LITHONIA	ARCHITECTURAL ARM MOUNTED OUTDOOR LUMINAIRE WITH SHAWC REFLECTOR HOUSING THE NIGHT-TIME FRIENDLY CRITERIA	1	ONE 300-WATT LED-PHILIPS STARLINE 45C PHOS. HORIZONTAL POSITION, STARLINE	AS2_200M_BRB8	2800	0.81	280
□	S2	4	AS2 200M BRB8 LITHONIA	ARCHITECTURAL ARM MOUNTED OUTDOOR LUMINAIRE WITH SHAWC REFLECTOR HOUSING THE NIGHT-TIME FRIENDLY CRITERIA	1	ONE 300-WATT LED-PHILIPS STARLINE 45C PHOS. HORIZONTAL POSITION, STARLINE	AS2_200M_BRB8	2800	0.81	280
□	W	12	LOWVAC 48-120V SILESCOP LUMINAIRE	FULL OUTDOOR WALL FIXTURE WITH LED LAMP @ 10' P.O.A.D.	1	3000 LUMEN 3000K LED		3000	1	48

NOTE:
 POLE MOUNTED LUMINAIRES ARE INSTALLED ON A 20' POLE MOUNTED ON A 2' CONCRETE BASE.
 LIGHTING CONTRIBUTION FROM CANOPY LIGHTING NOT INCLUDED.



DETAIL - SITE LIGHTING POLE BASE
 NOTES

Order Plans @

1 ELECTRICAL SITE PLAN
 SCALE: 1/16" = 1'-0"

CONSTRUCTION REISSUE SET