



FFPA AIR STUDIO
 ARCHITECTURE & INTERIORS
 1000 BOBELL AVENUE SUITE H1
 BAYON ROUGE, LOUISIANA 70009
 TEL: 847.416.1462
 FAX: 847.416.1463
 WWW.FFPASTUDIO.COM

IMEG
 15716 RESEARCH BLVD
 SUITE 300
 FORT WORTH, TX 76105
 WWW.IMEGPROJECTS.COM
 IMEG PROJECT # 00161306

Prairieville General Hospital
 37358 Market Place Dr.
 Prairieville, LA 70769

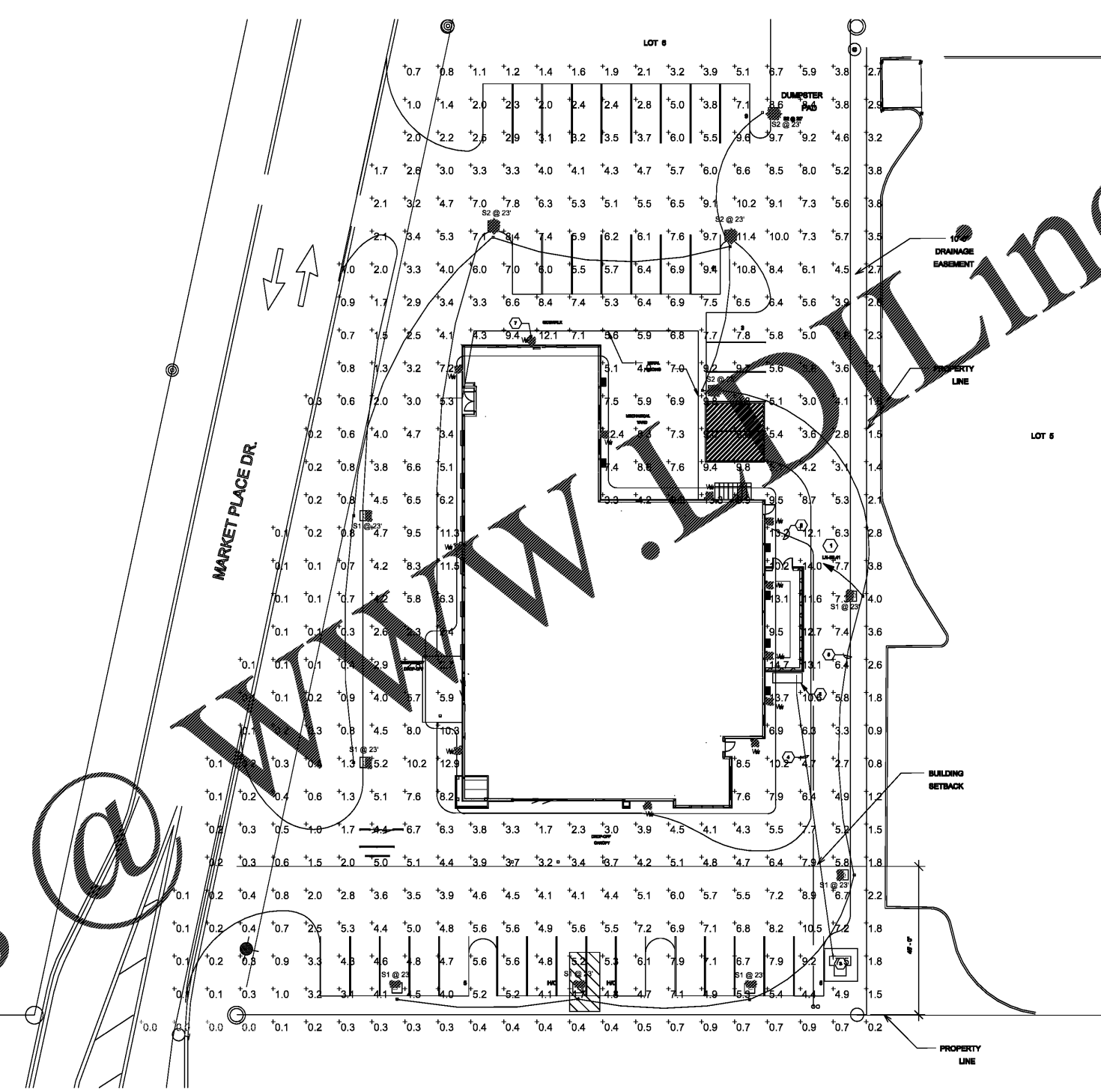
Shawn Kauten and Associates
 Robert C. Murray, AIA
 Architects & Construction Services
 13438 Reservoir Rd., Ste. 202
 Houston, TX 77040
 Tel: 281.695.5716
 Fax: 281.695.5714
 Email: shawn@shawnkauten.com

Project No. 1607050
 Drawn: TB
 Checked:
 Date: November 22, 2017
 No. Description Date

CONSTRUCTION REISSUE SET

E400
 SITE PLAN
 PHOTOMETRICS

Order Plans



1 SITE PLAN PHOTOMETRICS
 SCALE: 1/16" = 1'-0"

Symbol	Label	Qty	Category Number	Description	# Lamps	Lamp	File	Lumens	LPF	Watts
□	S1	7	AS2 300W SHAC	ARCHITECTURAL AREA MOUNTED CUTOFF LUMINAIRE WITH BRASS REFLECTOR MEETS THE NIGHTTIME FRIENDLY CRITERIA	1	ONE 250 WATT ED-2R PULSE START METAL HALIDE	AS2 300W BR S (PULSE START) 10000	20000	0.81	288
□	S2	4	AS2 300W BR	ARCHITECTURAL AREA MOUNTED CUTOFF LUMINAIRE WITH BRASS REFLECTOR MEETS THE NIGHTTIME FRIENDLY CRITERIA	1	ONE 250 WATT ED-2R PULSE START METAL HALIDE	AS2 300W BR S (PULSE START) 10000	20000	0.81	288
□	W	12	L20MP FC/BR 120V	EMBEDDED RETIRED LAMP	1	FULL CUTOFF WALL PACK FIXTURE WITH LED LAMP @ 10-0" APG	3000 LUMEN 3000K LED	3000	1	45

NOTE:
 POLE MOUNTED LUMINAIRES ARE INSTALLED ON A 30' POLE MOUNTED ON A 3' CONCRETE BASE.
 LIGHTING CONTRIBUTION FROM CANOPY LIGHTING NOT INCLUDED.