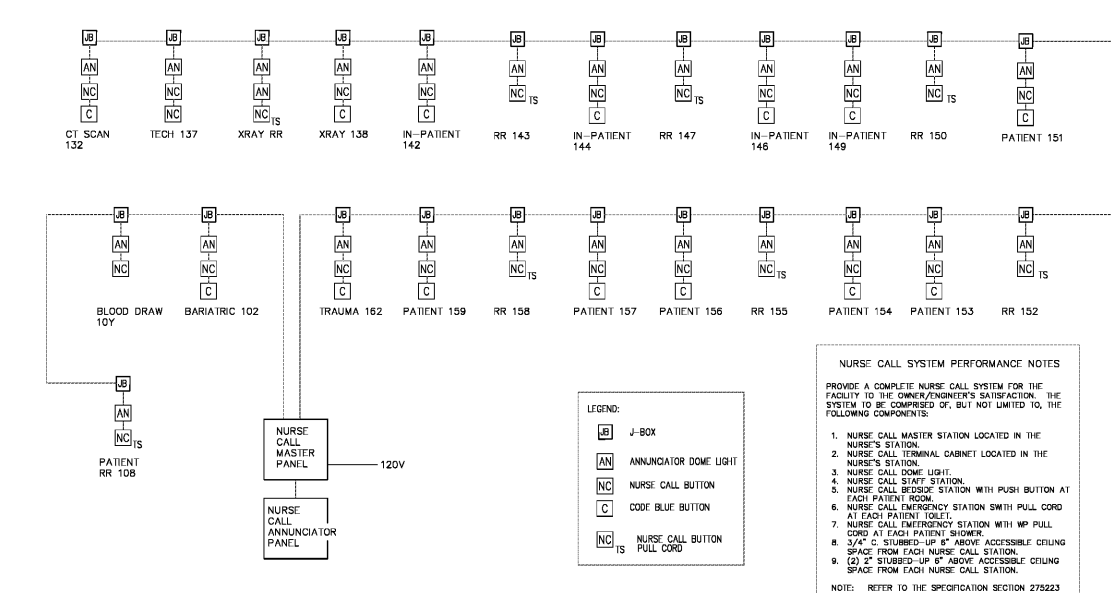


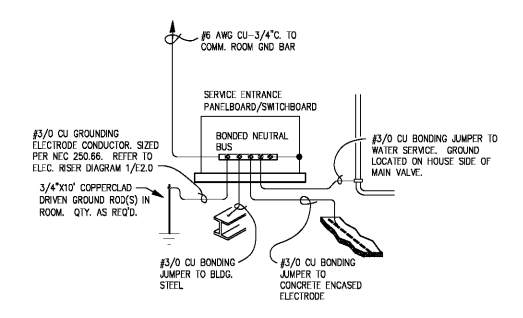


FFFAIR STUDIO
 11076 RESEARCH BLVD
 SUITE 350
 BAYON ROUGE, LA 70089
 PHONE: 815.446.1552
 FAX: 815.446.1547
 WWW.FFFAIR.COM

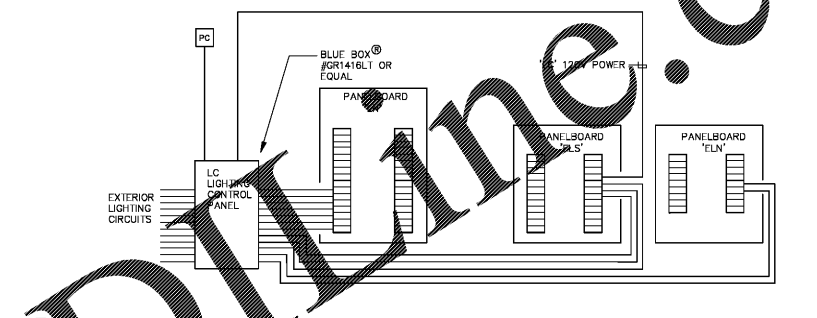
IMEG
 15715 RESEARCH BLVD
 SUITE 350
 BAYON ROUGE, LA 70089
 PHONE: 815.446.1552
 FAX: 815.446.1547
 WWW.IMEG.COM



4 NURSE CALL RISER
 NOT TO SCALE



2 SYSTEM GROUNDING DETAIL
 NOT TO SCALE



3 EXTERIOR LIGHTING CONTROL DETAIL
 NOT TO SCALE

NURSE CALL SYSTEM PERFORMANCE NOTES
 PROVIDE A COMPLETE NURSE CALL SYSTEM FOR THE FACILITY TO THE OWNER/ENGINEER'S SATISFACTION. THE SYSTEM IS TO BE COMPLETED BY, BUT NOT LIMITED TO, THE FOLLOWING COMPONENTS:

- NURSE CALL MASTER STATION LOCATED IN THE NURSE'S STATION.
- NURSE CALL TERMINAL CABINET LOCATED IN THE NURSE'S STATION.
- NURSE CALL DOME LIGHT.
- NURSE CALL STATION WITH PUSH BUTTON AT EACH PATIENT ROOM.
- NURSE CALL STATION WITH MP PULL CORD AT EACH PATIENT ROOM.
- NURSE CALL STATION WITH MP PULL CORD AT EACH PATIENT ROOM.
- NURSE CALL STATION WITH MP PULL CORD AT EACH PATIENT ROOM.
- NURSE CALL STATION WITH MP PULL CORD AT EACH PATIENT ROOM.
- NURSE CALL STATION WITH MP PULL CORD AT EACH PATIENT ROOM.
- NURSE CALL STATION WITH MP PULL CORD AT EACH PATIENT ROOM.

NOTE: REFER TO THE SPECIFICATION SECTION 275223 FOR MORE DETAILED INFORMATION.

ELECTRICAL LOAD ANALYSIS
 PRAIRIEVILLE EMERGENCY CENTER
 SYSTEM VOLTAGE - 120/208V, 3 PHASE, 4 WIRE + GND.

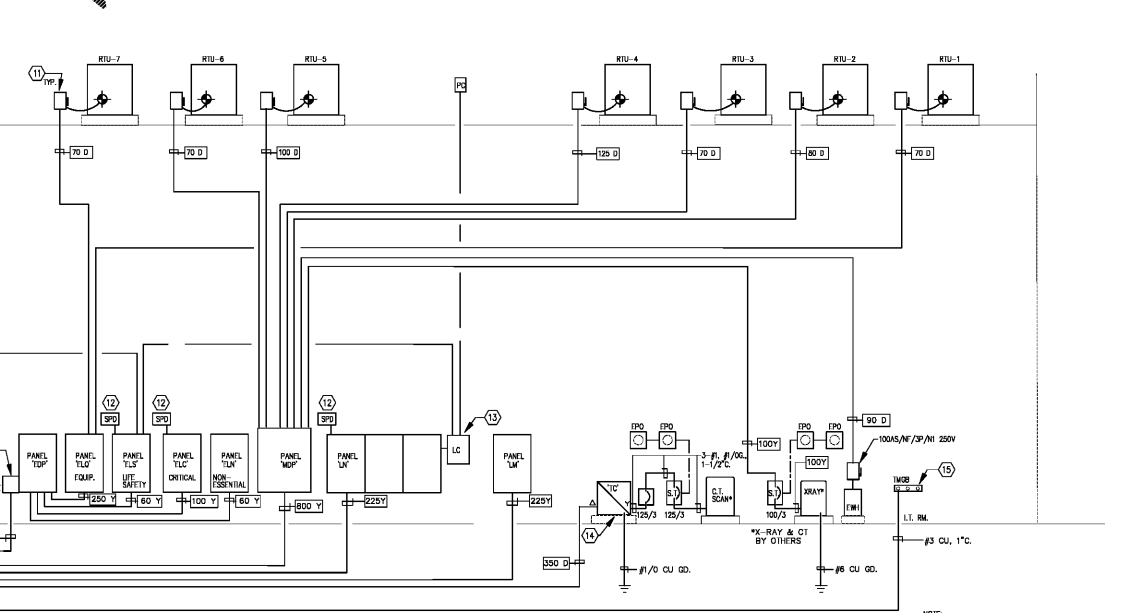
LOAD DESCRIPTION	VA/SF	LOAD - KVA	DEMAND FACTOR	NEC	DEMAND LOAD KVA	AMPERES
GENERAL LIGHTING	2.0	20.4	1.25	229.12	25.5	71
EXTERIOR LIGHTING		3.0	1.25		6.3	17
RECEPTION		60.5	0.99	220.44	36.3	94
MISC. LOADS - X-RAY EDPT.		27.0	1.00		27.0	75
CT SCANNER		83.0	1.00		83.0	231
INDUCTION MOTOR (AIR HANDLER)		5.3	0.25		1.3	4
HEATING		49.0		1.00 or Non-Connected	49.0	138
COOLING	24 Tons				150.0	417
FANS		32.0	1.00		32.0	89
WATER HEATERS	8.1 hp				38.0	103
FUTURE EXPANSION 1,800 S.F.	30.3				67.0	186
N.E.C. DEMAND LOAD					385.5	1229
SERVICE ENTRANCE RATING						1600
SPARE CAPACITY						271

ELECTRICAL LOAD ANALYSIS - GENERATOR
 PRAIRIEVILLE
 SYSTEM VOLTAGE - 120/208V, 3 PHASE, 4 WIRE + GND.

LOAD DESCRIPTION	LOAD - KVA	DEMAND FACTOR	NEC	DEMAND LOAD KVA	AMPERES
ESSENTIAL POWER - CRITICAL BRANCH	16.1	1.00		16.1	45
ESSENTIAL POWER - LIFE SAFETY BRANCH	7.6	1.00		7.6	21
ESSENTIAL POWER - EQUIPMENT BRANCH	47.0	1.00		47.0	130
NON-ESSENTIAL POWER	7.3	1.00		7.3	20
TOTAL EMERGENCY LOAD				88.0	246
GENERATOR RATING 125 KW @ 0.80 pf					156.0
SPARE CAPACITY					95

FEEDER SCHEDULE (ALL CU CONDUCTORS)

TAG	CONDUCTORS & CONDUIT
80-Y	4 #6 14FTG, 1" C
100-Y	4 #6 14FTG, 1" C
300-Y	4 #6 14FTG, 1" C
225-Y	4 #4 84C, 2-1/2" C
250-Y	4 #20 KCMIL, #40, 1-1/2" C
300-Y	4 #30 KCMIL, #40, 3" C
400-Y	4 #20 KCMIL, #30, 4" C
500-Y	2 SETS 4 #50 KCMIL, #25, 2-1/2" C
800-Y	2 SETS 4 #80 KCMIL, #100, 4" C
40-D	3 #4 #50, 1-1/2" C
80-D	3 #4 #50, 1-1/2" C
70-D	3 #4 #50, 1-1/2" C
80-D	3 #4 #50, 1-1/2" C
90-D	3 #4 #50, 1-1/2" C
100-D	3 #4 #50, 1-1/2" C
110-D	3 #2 #50, 1-1/2" C
120-D	3 #1 #50, 1-1/2" C
250-D	3 #30 KCMIL, #30
260-D	ALL 1/2" RIGID CONDUITS



1 ELECTRICAL RISER DIAGRAM
 NO SCALE

- KEYED NOTES:**
- PROVIDE METER SOCKET PER UTILITY REQUIREMENTS. METERING CT'S SHALL BE LOCATED ON TRANSFORMER SECONDARY LINES, COORDINATE WITH UTILITY AND ALL
 - PAD MOUNT TRANSFORMER BY UTILITY.
 - SURGE PROTECTION DEVICE, 240 kVA RATING, NEMA 3R ENCLOSURE. PROVIDE UL 1449 3RD ED. LISTED SPD. CONNECT TO BREAKER IN WSP, MOUNT ON EXTERIOR. REFER TO PANEL SCHEDULES.
 - SWITCHBOARD "MSB", 120/208V 3P, 4W, 1600 AMP BUS, 80 kVDC, NEMA 3R. PROVIDE 3" HIGH HOUSKEEPING PAD 3" BEYOND FOOTPRINT OF CABINET.
 - 125 kW/156 kVA (0.8 pf) ALTERNATOR, 120/208V 3P, 4W DIESEL GENERATOR SET WITH BASE TANK AND LEVEL 2 ACOUSTIC WEATHERPROOF ENCLOSURE. GENERATOR SHALL BE CONNECTED AS A SEPARATELY DERIVED SYSTEM.
 - EMERGENCY GENERATOR SHUTDOWN, LOCATE NEAR ENTRANCE TO ELECTRICAL YARD. PROVIDE PHOTOIC LABEL.
 - WORK KEY INTERLOCK ON GENERATOR MAIN CIRCUIT BREAKER & LOAD BANK CIRCUIT BREAKER.
 - BASE TANK WITH MINIMUM 12 HRS. FUEL @ 100% LOAD - 135 GAL.
 - 4-POLE OPEN TRANSFER AIDS WITH MAINTENANCE BYPASS, NEMA 3R, 400 AMP, 42 MAG. MIN. RATING, RUSSELBROS OR EQUAL.
 - REFER TO MECHANICAL EQUIPMENT CONNECTION SCHEDULE ON SHEET E7001 FOR DISCONNECT AND FUSE SIZES.
 - SURGE PROTECTION DEVICE, CURRENT TECHNOLOGY "103" SERIES, 50 KA TYP.
 - PROGRAMMABLE LIGHTING CONTROLLER. REFER TO DETAIL 3, THIS SHEET.
 - STEP-UP TRANSFORMER FOR CT SCANNER, 225 kVA, 208V DELTA PRIMARY, 277/480V WYE SECONDARY, 1500 RISE, NEMA 1, GENERAL PURPOSE.
 - COORDINATE SIZE OF CU GROUND BAR WITH I.T. DEPT.
 - PROVIDE PULL BOX FOR POSSIBLE FUTURE RE-ROUTING OF FEEDER FROM AIS TO 15L0 PANEL, IF EMERGENCY SYSTEM REQUIRES UPGRADE TO ACCOMMODATE INCREASED LOAD.
 - NOT USED.

NOTE:
 VERIFY THAT GROUNDING COMPLIES WITH 2014 NEC ART. 250. PERFORM GROUND RESISTANCE TEST, FALL OF POTENTIAL METHOD, OF THE SYSTEM GROUND. THE RESISTANCE FROM GROUNDING ELECTRODE CONDUCTOR TO EARTH GROUND SHALL NOT EXCEED 25 OHMS. GROUND RESISTANCE MEASUREMENTS SHALL BE PERFORMED, RECORDED AND SUBMITTED TO THE ARCHITECT/ENGINEER. PERFORM TESTS IN NORMALLY DRY WEATHER OR NO LESS THAN 24 HOURS AFTER RAINFALL. PROVIDE A REPORT CONTAINING THE DATE OF THE TEST, MEASUREMENTS AND PREVAILING WEATHER CONDITIONS AT THE TIME OF TEST. IF RESISTANCE EXCEEDS 25 OHMS, REPORT RESULTS DIRECTLY AND IMMEDIATELY TO THE ENGINEER.

Order Plans @ WWW.DDLINE.COM

Prairieville General Hospital
 37358 Market Place Dr.
 Prairieville, LA 70769

Shawn Kauter and Associates
 Robert C. Murray, P.E.
 ARCHITECTURE & CONSTRUCTION SERVICES
 13438 Boulder Ln., Ste. 202
 Houston, TX 77040
 PH: 281.695.5716
 FAX: 281.695.5714
 EMAIL: SCA@shawnkauter.com

Project No. 1607550
 Drawn: TB
 Checked:
 Date: November 22, 2017
 No. Description Date

E301
 ELECTRICAL
 RISER DIAGRAM

CONSTRUCTION REISSUE SET