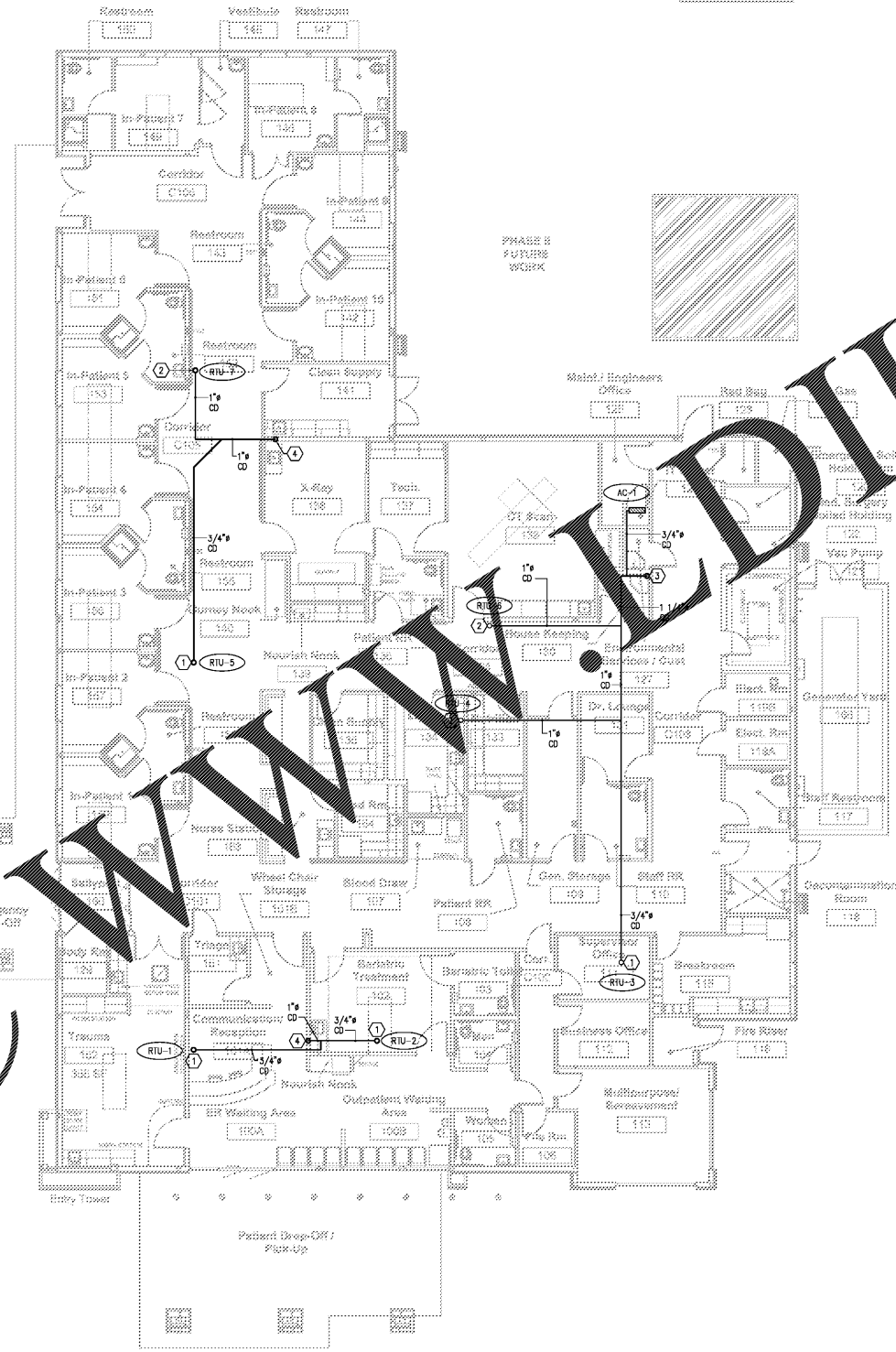


Order Plans @

WWW.DI.LiNE.COM



1 MECHANICAL - CONDENSATE DRAIN
SCALE: 1/8" = 1'-0"

KEYED NOTES - MECHANICAL (ROOF PLAN):

- ① 3/4" INSULATED COPPER CONDENSATE DRAIN FROM ABOVE.
- ② 1" INSULATED COPPER CONDENSATE DRAIN FROM ABOVE.
- ③ ROUTE 1-1/4" INSULATED COPPER CONDENSATE DRAIN ON THE WALL AND DISCHARGE ABOVE THE FINISH FLOOR OF MOP SINK.
- ④ ROUTE 1" INSULATED COPPER CONDENSATE DRAIN DOWN AND DISCHARGE 1" ABOVE THE FINISH FLOOR OF MOP SINK. SEE MECHANICAL DRAWING FOR MORE INFORMATION.

STATE OF LOUISIANA
BRUCE E. BURBY
PROFESSIONAL ENGINEER
No. 33051
11.22.17
Exp. 09.30.19

FFPA AIR STUDIO
OFFICE: 1000 BOBBELL AVENUE SUITE H1
BAYON ROUGE, LOUISIANA 70009
PHONE: 847.7406

IMEG
15716 RESEARCH BLVD
SUITE 300
HOUSTON, TX 77058
PHONE: 281.466.6336
WWW.IMEGPROJECTS.COM

Prairieville General Hospital
37358 Market Place Dr.
Prairieville, LA 70769

Shawn Kautson and Associates
Robert C. Murray, AIA
Architects & Construction Services
13438 Boulder Ln., Ste. 202
Houston, TX 77040
PH: 281.965.5716
FAX: 281.965.5714
EMAIL: SKA@shawnkautson.com



Project No. 1607050
Drawn: DL/MP
Checked: MZ
Date: November 22, 2017

No.	Description	Date

CONSTRUCTION REISSUE SET

M104
MECHANICAL
CONDENSATE
DRAIN