

FFPA AIR STUDIO
1100 BELLAIR AVE SUITE H1
BAYON ROUGE, LA 70009
713.835.7406



Prairieville General Hospital
37358 Market Place Dr.
Prairieville, LA 70769

Shawn Kesteven and Associates
Robert C. Murray, AIA
Architecture & Construction Services
13420 Brandeis Blvd., Suite 202
Metairie, LA 70001
PH: 214.945.5116
www.shawnkesteven.com
Email: SKA@shawnkesteven.com



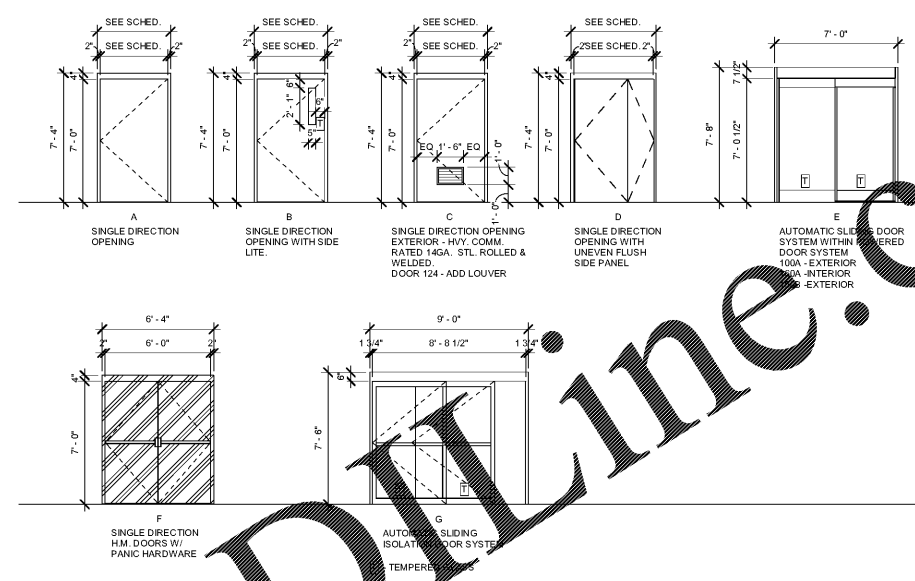
CONSTRUCTION REISSUE SET

Project No.	1607050	
Drawn:	AN	
Checked:	SK	
Date:	11.22.17	
No.	Description	Date
1	Addendum 1	Feb 3
2	Addendum 2	Feb 3

A402
Door and Window Types

Door Schedule

Door Number	Room Name	Type	Door					Under Cut	Fire Rating	Hardware Set	Frame					Comments
			Width	Height	Thickness	Material	Finish				Type	Material	Finish	Jamb	Head	
100A	ER Waiting Area	E	7'-0"	7'-0"	1 3/4"	ALUM.	CLR.		01	INTEGRAL FRAME	PER MANUF.	CLR. ANNO.			RE: MANUF.	
100B	Outpatient Waiting Area	A	3'-0"	7'-0"	1 3/4"	SCWD	PLAM			INTERIOR						
101B	Wheel Chair Storage	A	3'-10"	7'-0"	1 3/4"	SCWD	PLAM			INTERIOR						
102A	Biathetic Treatment	A	3'-10"	7'-0"	1 3/4"	SCWD	PLAM		30	INTERIOR	H.M.	PTD			2 HR Rated Door	
102B	Biathetic Treatment	A	3'-10"	7'-0"	1 3/4"	SCWD	PLAM		31	INTERIOR	H.M.	PTD			1 HR Rated Door	
103	Biathetic Toilet	A	3'-10"	7'-0"	1 3/4"	SCWD	PLAM		31	INTERIOR	H.M.	PTD			1 HR Rated Door	
104	Men	A	3'-0"	7'-0"	1 3/4"	SCWD	PLAM		11	INTERIOR	H.M.	PTD			1 HR Rated Door	
105	Women	A	3'-0"	7'-0"	1 3/4"	SCWD	PLAM		11	INTERIOR	H.M.	PTD			1 HR Rated Door	
106	File Rm.	A	3'-0"	7'-0"	1 3/4"	SCWD	PLAM		12	INTERIOR	H.M.	PTD			2 HR Rated Door	
108	Patient RR	A	3'-0"	7'-0"	1 3/4"	SCWD	PLAM		12	INTERIOR	H.M.	PTD			2 HR Rated Door	
109A	Gen. Storage	A	3'-0"	7'-0"	1 3/4"	SCWD	PLAM		19	INTERIOR	H.M.	PTD				
109B	Gen. Storage	A	3'-0"	7'-0"	1 3/4"	SCWD	PLAM		19	INTERIOR	H.M.	PTD				
110	Staff RR	A	3'-0"	7'-0"	1 3/4"	SCWD	PLAM		21	INTERIOR	H.M.	PTD				
111	Supervisor Office	B	3'-0"	7'-0"	1 3/4"	SCWD	PLAM		17	INTERIOR	H.M.	PTD			2 HR Rated Door	
112	Business Office	B	3'-0"	7'-0"	1 3/4"	SCWD	PLAM		17	INTERIOR	H.M.	PTD			2 HR Rated Door	
113	Multipurpose/Bereavement	B	3'-0"	7'-0"	1 3/4"	SCWD	PLAM		17	INTERIOR	H.M.	PTD			2 HR Rated Door	
115	Breakroom	B	3'-0"	7'-0"	1 3/4"	SCWD	PLAM		28	INTERIOR	H.M.	PTD			2 HR Rated Door	
116	Fire Riser	A	3'-0"	7'-0"	1 3/4"	H.M.	PTD		05	EXTERIOR/ INTERIOR/ HVY. DUTY 14 GA. ROLLED & WELDED	H.M.	PTD				
117	Staff Restroom	A	3'-0"	7'-0"	1 3/4"	SCWD	PLAM		21	INTERIOR	H.M.	PTD				
118	Decontamination Room	A	3'-0"	7'-0"	1 3/4"	SCWD	PLAM		21	INTERIOR	H.M.	PTD				
118A	Decontamination Room	A	3'-0"	7'-0"	1 3/4"	SCWD	PLAM		21	INTERIOR	H.M.	PTD				
119A	Elect. Rm.	A	3'-0"	7'-0"	1 3/4"	SCWD	PLAM		21	INTERIOR	H.M.	PTD				
119B	Elect. Rm.	A	3'-0"	7'-0"	1 3/4"	SCWD	PLAM		21	INTERIOR	H.M.	PTD				
120	Emergency Soiled Holding Rm	A	3'-0"	7'-0"	1 3/4"	SCWD	PLAM		27	INTERIOR	H.M.	PTD				
121	Vac Pump	A	3'-0"	7'-0"	1 3/4"	SCWD	PLAM		28	INTERIOR	H.M.	PTD			2 HR Rated Door	
122	Med. Surgery Soiled Holding	A	3'-0"	7'-0"	1 3/4"	SCWD	PLAM		27	INTERIOR	H.M.	PTD				
123	Red Bag	A	3'-0"	7'-0"	1 3/4"	SCWD	PLAM		19	INTERIOR	H.M.	PTD				
124	Med Gas	A	3'-0"	7'-0"	1 3/4"	H.M.	PTD		04	EXTERIOR/ HVY. DUTY 14 GA. ROLLED & WELDED	H.M.	PTD			Provide Louver	
125	Medical Engineers Office	A	3'-0"	7'-0"	1 3/4"	SCWD	PLAM		20	INTERIOR	H.M.	PTD				
126	IT Closet	C	2'-6"	7'-0"	1 3/4"	SCWD	PLAM		19	INTERIOR	H.M.	PTD				
127	Environmental Services / Cust.	A	3'-0"	7'-0"	1 3/4"	SCWD	PLAM		19	INTERIOR	H.M.	PTD				
129	Body Rm	A	3'-10"	7'-0"	1 3/4"	H.M.	PTD		19	INTERIOR	H.M.	PTD				
130	House Keeping	A	3'-0"	7'-0"	1 3/4"	SCWD	PLAM		19	INTERIOR	H.M.	PTD				
131A	Dr. Lounge	A	3'-0"	7'-0"	1 3/4"	SCWD	PLAM		11	INTERIOR	H.M.	PTD				
131B	Dr. Lounge	B	3'-0"	7'-0"	1 3/4"	SCWD	PLAM		26	INTERIOR	H.M.	PTD				
132	CT Scan	A	3'-10"	7'-0"	1 3/4"	SCWD	PLAM		10	INTERIOR	H.M.	PTD			Lead Lined Door and Frame	
133	Nutrition	B	3'-0"	7'-0"	1 3/4"	SCWD	PLAM		24	INTERIOR	H.M.	PTD				
134	Lab	B	3'-0"	7'-0"	1 3/4"	SCWD	PLAM		23	INTERIOR	H.M.	PTD				
135	Clean Supply	A	3'-0"	7'-0"	1 3/4"	SCWD	PLAM		27	INTERIOR	H.M.	PTD				
136A	Patient RR	A	3'-0"	7'-0"	1 3/4"	SCWD	PLAM		11	INTERIOR	H.M.	PTD				
136B	Patient RR	A	3'-0"	7'-0"	1 3/4"	SCWD	PLAM		29	INTERIOR	H.M.	PTD				
137A	Tech	A	3'-10"	7'-0"	1 3/4"	SCWD	PLAM		10	EXTERIOR/ INTERIOR/ HVY. DUTY 14 GA. ROLLED & WELDED	H.M.	PTD			Lead Lined Door and Frame	
137B	X-Ray	A	3'-10"	7'-0"	1 3/4"	SCWD	PLAM		10	EXTERIOR/ INTERIOR/ HVY. DUTY 14 GA. ROLLED & WELDED	H.M.	PTD			Lead Lined Door and Frame	
138	X-Ray	A	3'-10"	7'-0"	1 3/4"	H.M.	PTD		10	EXTERIOR/ INTERIOR/ HVY. DUTY 14 GA. ROLLED & WELDED	H.M.	PTD			Lead Lined Door and Frame	
141	Clean Supply	A	3'-0"	7'-0"	1 3/4"	SCWD	PLAM		31	INTERIOR	H.M.	PTD			1 HR Rated Door	
141A	Clean Supply	F	3'-0"	7'-0"	1 3/4"	H.M.	PTD			EXTERIOR/ INTERIOR/ HVY. DUTY 14 GA. ROLLED & WELDED	H.M.	PTD				
142	In-Patient 10	A	3'-10"	7'-0"	1 3/4"	SCWD	PLAM		08	INTERIOR	H.M.	PTD				
143A	Restroom	A	3'-0"	7'-0"	1 3/4"	SCWD	PLAM		09	INTERIOR/CASE	H.M.	PTD			BULL NOSE DOOR PROFILE	
143B	Restroom	A	3'-0"	7'-0"	1 3/4"	SCWD	PLAM		09	INTERIOR/CASE	H.M.	PTD			BULL NOSE DOOR PROFILE	
144	In-Patient 9	A	3'-10"	7'-0"	1 3/4"	SCWD	PLAM		08	INTERIOR	H.M.	PTD				
146	In-Patient 8	D	4'-6"	7'-0"	1 3/4"	SCWD	PLAM		07	INTERIOR	H.M.	PTD				
147	Restroom	A	3'-0"	7'-0"	1 3/4"	SCWD	PLAM		09	INTERIOR/CASE	H.M.	PTD			BULL NOSE DOOR PROFILE	
148	Vestibule	A	3'-10"	7'-0"	1 3/4"	SCWD	PLAM		07	INTERIOR	H.M.	PTD				
149	In-Patient 7	G	9'-0"	7'-0"	2"	MANUF.	CLR.		01	INTEGRAL FRAME	PER MANUF.	BRUSHED ALUM.				
150	Restroom	A	3'-0"	7'-0"	1 3/4"	SCWD	PLAM		09	INTERIOR	H.M.	PTD			BULL NOSE DOOR PROFILE	
151	In-Patient 6	A	3'-10"	7'-0"	1 3/4"	SCWD	PLAM		08	INTERIOR	H.M.	PTD				
152A	Restroom	A	3'-0"	7'-0"	1 3/4"	SCWD	PLAM		09	INTERIOR/CASE	H.M.	PTD			BULL NOSE DOOR PROFILE	
152B	Restroom	A	3'-0"	7'-0"	1 3/4"	SCWD	PLAM		09	INTERIOR/CASE	H.M.	PTD			BULL NOSE DOOR PROFILE	
153	In-Patient 5	A	3'-10"	7'-0"	1 3/4"	SCWD	PLAM		08	INTERIOR	H.M.	PTD				
154	In-Patient 4	A	3'-10"	7'-0"	1 3/4"	SCWD	PLAM		08	INTERIOR	H.M.	PTD				
155A	Restroom	A	3'-0"	7'-0"	1 3/4"	SCWD	PLAM		09	INTERIOR/CASE	H.M.	PTD			BULL NOSE DOOR PROFILE	
155B	Restroom	A	3'-0"	7'-0"	1 3/4"	SCWD	PLAM		09	INTERIOR/CASE	H.M.	PTD			BULL NOSE DOOR PROFILE	
156	In-Patient 3	A	3'-10"	7'-0"	1 3/4"	SCWD	PLAM		08	INTERIOR	H.M.	PTD				
157	In-Patient 2	A	3'-10"	7'-0"	1 3/4"	SCWD	PLAM		08	INTERIOR	H.M.	PTD				
158A	Restroom	A	3'-0"	7'-0"	1 3/4"	SCWD	PLAM		09	INTERIOR/CASE	H.M.	PTD			BULL NOSE DOOR PROFILE	
158B	Restroom	A	3'-0"	7'-0"	1 3/4"	SCWD	PLAM		09	INTERIOR/CASE	H.M.	PTD			BULL NOSE DOOR PROFILE	
159	In-Patient 1	A	3'-10"	7'-0"	1 3/4"	SCWD	PLAM		08	INTERIOR	H.M.	PTD				
161A	Triage	A	3'-0"	7'-0"	1 3/4"	SCWD	PLAM		31	INTERIOR	H.M.	PTD			2 HR Rated Door	
161B	Triage	A	3'-0"	7'-0"	1 3/4"	SCWD	PLAM		31	INTERIOR	H.M.	PTD			2 HR Rated Door	
162	Trauma	A	3'-0"	7'-0"	1 3/4"	SCWD	PLAM		14	INTERIOR	H.M.	PTD			1 HR Rated Door	
162B	Trauma	A	3'-0"	7'-0"	1 3/4"	SCWD	PLAM		13	INTERIOR	H.M.	PTD				
164	Med Rm.	A	3'-0"	7'-0"	1 3/4"	SCWD	PLAM		18	INTERIOR	H.M.	PTD				
166	Generator Yard	F	6'-0"	7'-0"	1 3/4"	H.M.	PTD		02	EXTERIOR/ INTERIOR/ HVY. DUTY 14 GA. ROLLED & WELDED	H.M.	PTD				
C102	Corridor	A	3'-0"	7'-0"	1 3/4"	SCWD	PLAM		18	INTERIOR	H.M.	PTD				
C103	Corridor	A	3'-10"	7'-0"	1 3/4"	H.M.	PTD		06	EXTERIOR/ HVY. DUTY 14 GA. ROLLED & WELDED	H.M.	PTD				
C106	Corridor	F	6'-0"	7'-0"	1 3/4"	H.M.	PTD		03	EXTERIOR/ INTERIOR/ HVY. DUTY 14 GA. ROLLED & WELDED	H.M.	PTD				
160A	Sallyport	D	7'-0"	7'-8"		ALUM.	CLR.		01	INTEGRAL FRAME	PER MANUF.	R. ANNO.				
160B	Sallyport	D	7'-0"	7'-8"		ALUM.	CLR.		01	INTEGRAL FRAME	PER MANUF.	R. ANNO.				



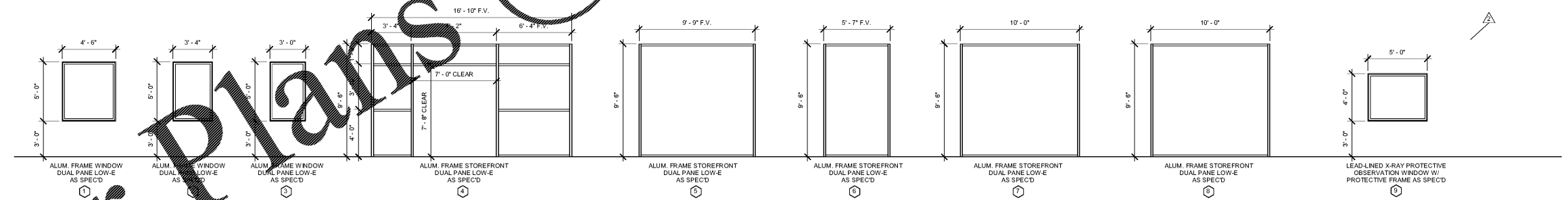
GENERAL DOOR NOTES

1. HARDWARE FOR DOORS TO COMPLY WITH ADA AND ANTI-CRUSH REQUIREMENTS FOR ACCESSIBILITY.
2. MAXIMUM HEIGHT TO THRESHOLD SHALL BE 1/2".
3. MAXIMUM OPENING FORCE OF DOORS WITH CLOSURES SHALL BE 5 FT. LBS.
4. ALL EXTERIOR HOLLOW METAL DOORS TO BE PAINTED, COLOR AS SELECTED BY OWNER/ARCHITECT.
5. SAFETY GLAZING REQUIRED INDOORS AND WITHIN 24" OF DOORS.
6. EXIT DOORS SHALL BE OPENABLE FROM THE INSIDE WITHOUT THE USE OF KEY OR ANY SPECIAL KNOWLEDGE OR EFFORT.
7. REFER TO SPECS FOR DOOR HARDWARE, CLOSER AND WALLSTOP INFORMATION.

GENERAL DOOR FINISH NOTES

1. FRAME DIMENSIONS FOR STEEL ARE 1 3/4". FIELD VERIFY MATERIAL.
2. ALL INTERIOR DOORS TO HAVE PLAM FINISH UNLESS OTHERWISE NOTED IN THE DOOR SCHEDULE. PLAM FINISH AS SELECTED BY OWNER/ARCHITECT.
3. ALL EXTERIOR STOREFRONT FINISHES TO BE CLEAR ANNOZED.
4. ALL EXTERIOR HOLLOW METAL DOORS TO BE PAINTED, COLOR AS SELECTED BY OWNER/ARCHITECT.

FINISH TERMINOLOGY:
PLAM - PLASTIC LAMINATE FINISH (FRONT/BACK)
SCWD - STANDARD COMMERCIAL SOLID CORE WOOD DOOR, 1 3/4" TYPICAL
H.M. - 14 GA. HOLLOW METAL
PTD - PAINTED
CLR. ANNO. - CLEAR ANNOZED



GENERAL WINDOW NOTES

1. TO ENSURE ALL WINDOWS AND GLAZING COMPLIES WITH ALL LOCAL, STATE AND NATIONAL REQUIREMENTS AND CODES.
2. ALL STOREFRONT SYSTEMS SHALL BE LOW-E INSULATED, TEMPERED GLAZING, UNLESS OTHERWISE NOTED.
3. ALL DIMENSIONS SHOWN ARE TO FACE OF FRAME AND/OR ACTUAL WINDOW MATERIAL.
4. ALL WINDOWS TO BE INSTALLED PER MANUFACTURERS INSTRUCTIONS.

Order Plans @