

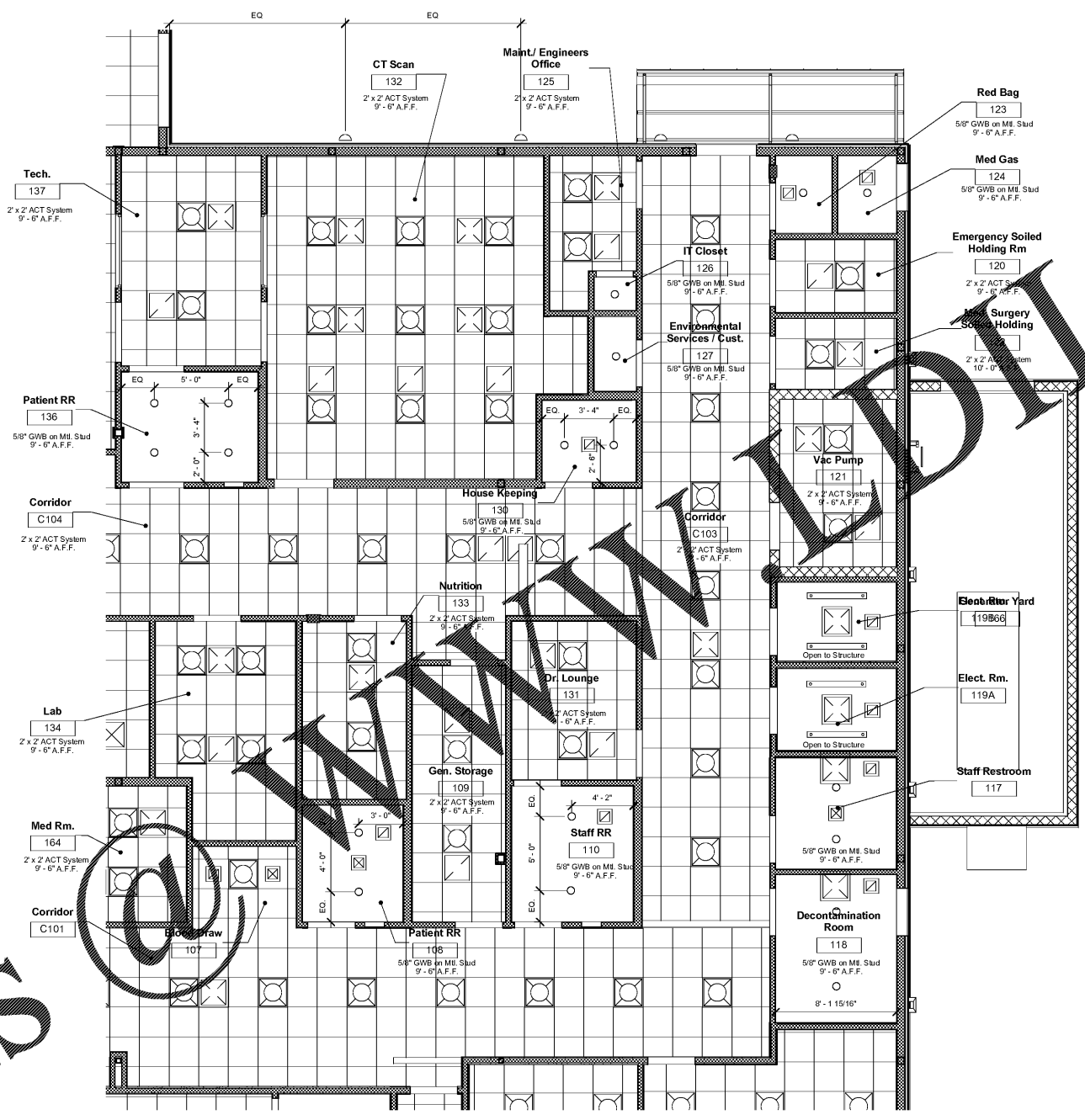
STUDIO
1100 BELL AVE SUITE H1
BAYON ROUGE, LA 70699
713.277.7406



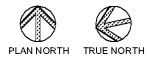
Reflected Ceiling Plan Legend

- 6" RECESSED CAN LIGHT
- 2" LINEAR PENDANT LIGHT 10'-0" A.F.F.
- 4" LINEAR PENDANT LIGHT 10'-0" A.F.F.
- 2 x 2 PARABOLIC LIGHTING
- COOPER SERIES LIGHTING 140/24/15
- EXTERIOR WALL WASH SCENE 10'-0" A.F.F.
- 12" EXHAUST GRILLE REF. MECHANICAL
- 2" RETURN EXHAUST GRILLE REF. MECHANICAL
- 12" SUPPLY GRILLE REF. MECHANICAL
- 24" SUPPLY GRILLE REF. MECHANICAL

- Note:
1. If dimension for light is not given center light in room.
 2. Recessed can lights in waiting area to be aligned with pendant lights if no dimension is given.
 3. Vertical dimensions for lights above finish floor are to the bottom of the light fixture.
 4. Exterior sconce lights to be centered on wall between windows and evenly spaced.



1 Enlarged Reflected Ceiling Plan - Area 'B'
SCALE: 1/4" = 1'-0"



Order Plans

Prairieville General Hospital
37358 Market Place Dr.
Prairieville, LA 70769

CONSTRUCTION REISSUE SET

Shawn Kesteven and Associates
Robert C. Murray, AIA
Architecture & Construction Services
13410 Mandeville Blvd., Suite 202
Mandeville, LA 70471
Ph: 214.945.5116
Fax: 214.945.5117
Email: SKA@shawnke.com



Project No.	1607050	
Drawn:	KRF	
Checked:	SK	
Date:	11.22.17	
No.	Description	Date

A303
Enlarged RCP -
Area 'B'