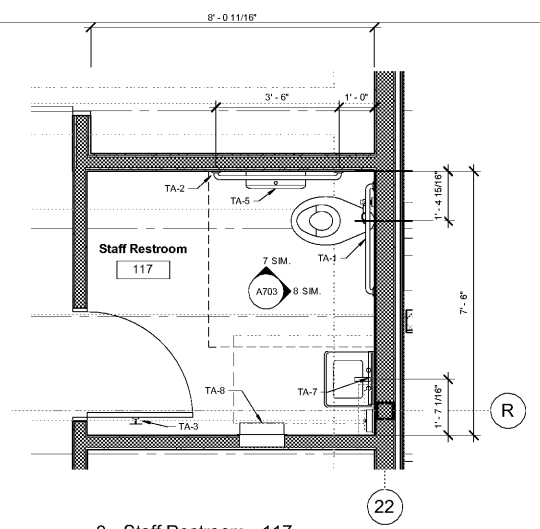


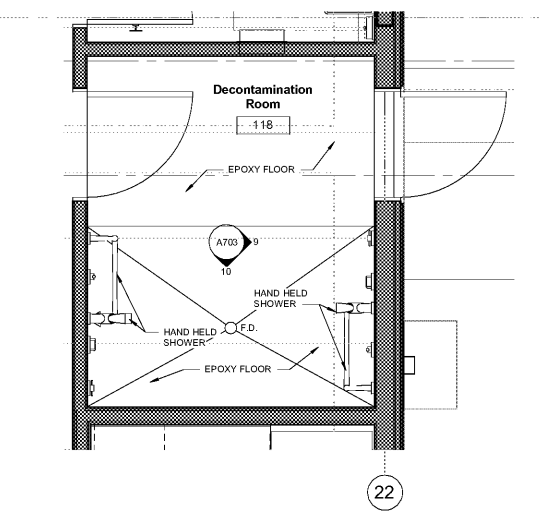
FFPAIR STUDIO
ARCHITECTURE
1100 BOBBELL AVENUE SUITE H1
BAYON ROUGE, LA 70069
713.833.7406



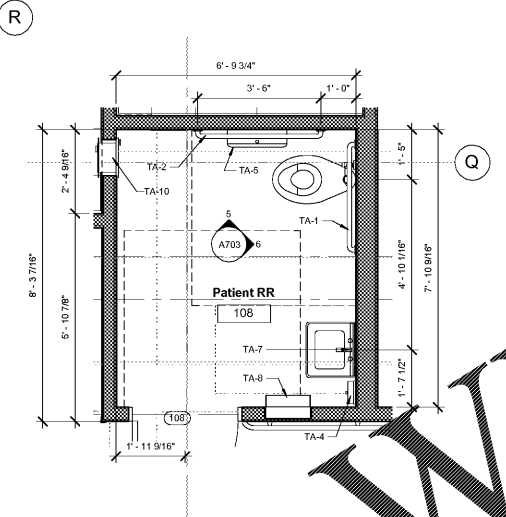
TOILET ACCESSORY (TA) SCHEDULE					
MARK	DESCRIPTION	MANUF.	MODEL #	MOUNTING HEIGHT	COMMENTS
TA-1	Grab Bars	Bradley Corporation	8120-001360	SEE SHEET A001	
TA-2	Grab Bars	Bradley Corporation	8122-001480	SEE SHEET A001	
TA-3	Bobrick B-672 Double Robe Hook	Bobrick Washroom Equipment, Inc.	B-672	SEE SHEET A001	
TA-4	Bobrick B-2112 Classic Series Surface Mounted Soap Dispenser	Bobrick Washroom Equipment, Inc.	B-2112	SEE SHEET A001	
TA-5	Bobrick B-2892 Classic Series Surface Mounted Twin Jumbo-Roll Toilet Tissue Dispenser	Bobrick Washroom Equipment, Inc.		SEE SHEET A001	
TA-7	Framed Mirror - 18"	Bobrick Washroom Equipment, Inc.	B-1836	SEE SHEET A001	
TA-8	Bobrick B-3944 Classic Series Recessed Convertible Combination Toilet and Shower Unit	Bobrick Washroom Equipment, Inc.	B-3944	SEE SHEET A001	
TA-9	Bobrick B-353 Recessed Sanitary Napkin Disposal	Bobrick Washroom Equipment, Inc.	B-353	SEE SHEET A001	
TA-10	Bobrick Recessed Recycled Men Pass-Through Cabinet	Bobrick	B-50516	SEE SHEET A001	



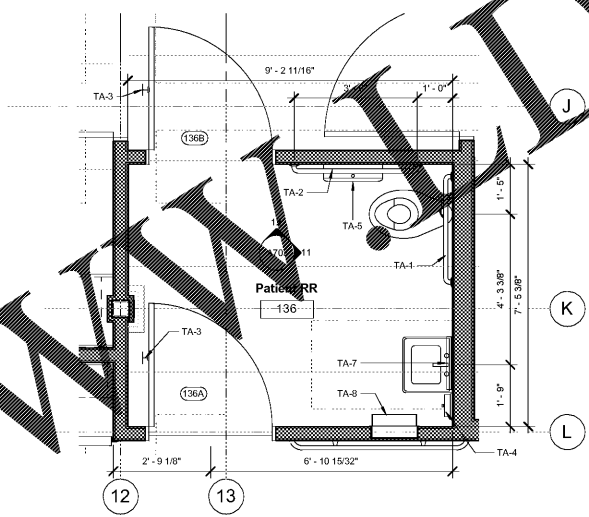
8 Staff Restroom - 117
SCALE: 1/2" = 1'-0"



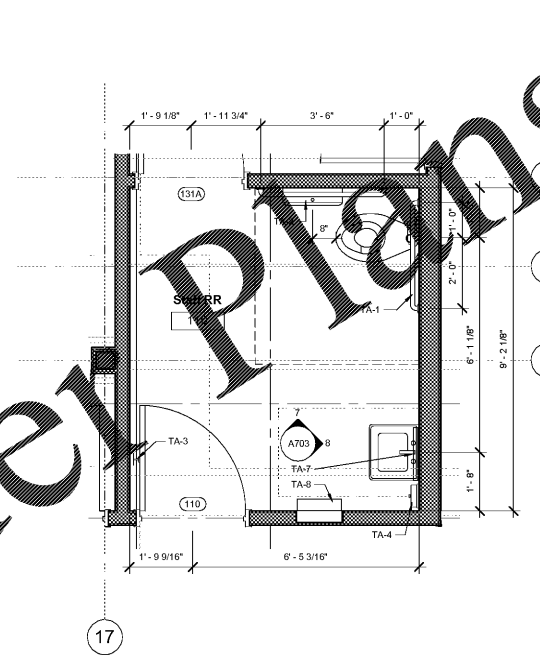
7 Decontamination Room 118
SCALE: 1/2" = 1'-0"



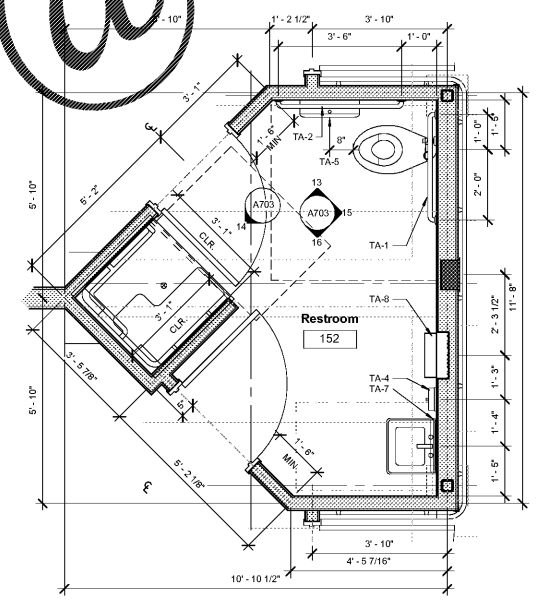
6 Enlarged Patient Restroom 108
SCALE: 1/2" = 1'-0"



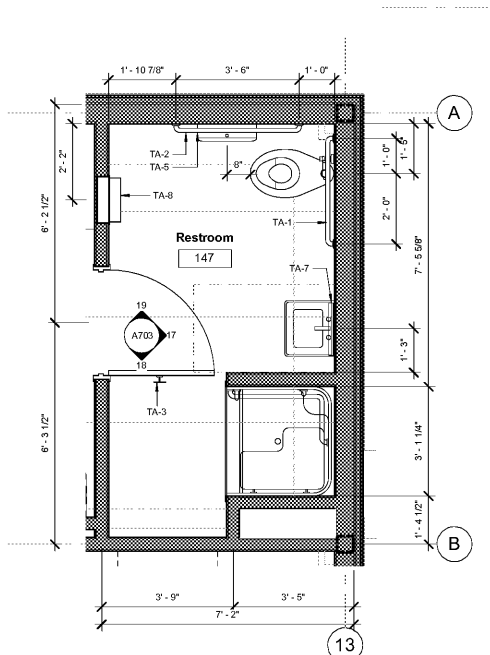
5 Enlarged Patient Restroom 139
SCALE: 1/2" = 1'-0"



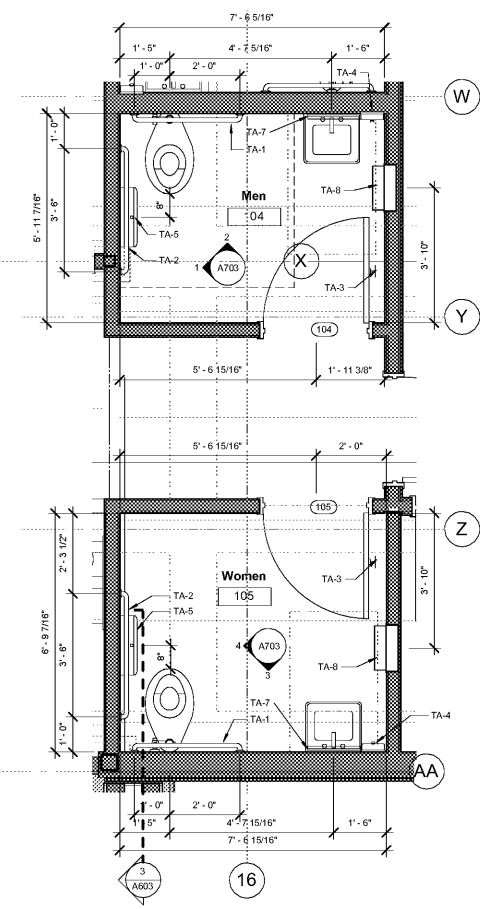
4 Staff Bathroom Rm. 110
SCALE: 1/2" = 1'-0"



3 Typical In-Patient Restroom
SCALE: 1/2" = 1'-0"



2 Enlarged Restroom 148
SCALE: 1/2" = 1'-0"



1 Enlarged Waiting Room Plan
SCALE: 1/2" = 1'-0"

CONSTRUCTION REISSUE SET

Shawn Kester and Associates
Robert C. Murray, AIA
Architecture & Construction Services
13435 Brandegee Blvd., Suite 202
Metairie, LA 70001
Tel: 214.945.5116
Fax: 214.945.5116
Email: SKA@shawnkester.com

Project No. 1607050
Drawn: VS
Checked: SK
Date: 11.22.17
No. Description Date

A205
Restrooms

Prairieville General Hospital
37358 Market Place Dr.
Prairieville, LA 70769

Order Plans

WWW.DLINE.COM