

PROJECT CODE ANALYSIS

ADOPTED CODES
PER LOCAL JURISDICTION (ASCENSION PARISH, LOUISIANA)

- 2012 INTERNATIONAL BUILDING CODE (IBC)
- 2012 INTERNATIONAL MECHANICAL CODE (IMC)
- 2012 INTERNATIONAL PLUMBING CODE (IPC)
- 2012 INTERNATIONAL EXISTING BUILDING CODE (IEBC)
- 2012 INTERNATIONAL FUEL GAS CODE (IFGC)
- 2012 INTERNATIONAL FIRE CODE (IFC)
- 2012 INTERNATIONAL ENERGY CONSERVATION CODE (IECC)
- 2011 NATIONAL ELECTRIC CODE (NEC)

USE AND OCCUPANCY CLASSIFICATION (IBC - SECTION 302)

GROUP: OCCUPANCY TYPE I-2 - EMERGENCY HOSPITAL
 CONSTRUCTION TYPE (CHAPTER 5): TYPE I-B
 FIRE PROTECTION PROVIDED (FIRE SPRINKLER): YES

GENERAL BUILDING SUMMARY (IBC - TABLE 503)

	ALLOWED	PROVIDED
ALLOWABLE HEIGHT (FT)	55 FT.	35 FT.
ALLOWABLE STORIES	1	1
ALLOWABLE AREA	11,000 SF	1,354 SF
ALLOWABLE AREA INCREASE WITH AUTOMATIC SPRINKLER SYSTEM	NO APPLICABLE	APPLICABLE

MEANS OF EGRESS - (IBC - SECTION 1005)

EGRESS WIDTH	FACTOR	LOAD (OCCS.)	REQUIRED WIDTH (INCHES)	PROVIDED
STAIRS	0.2	133 MAX	26.6 (36" MIN.)	25" OR 7'-36" DOORS
DOORS	0.3	NA	NA	NA

EXIT ACCESS REQUIREMENTS

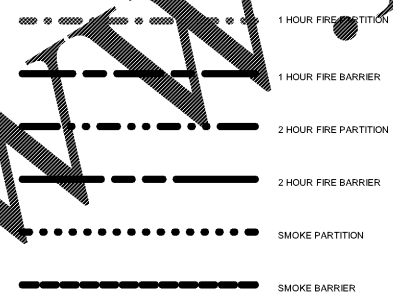
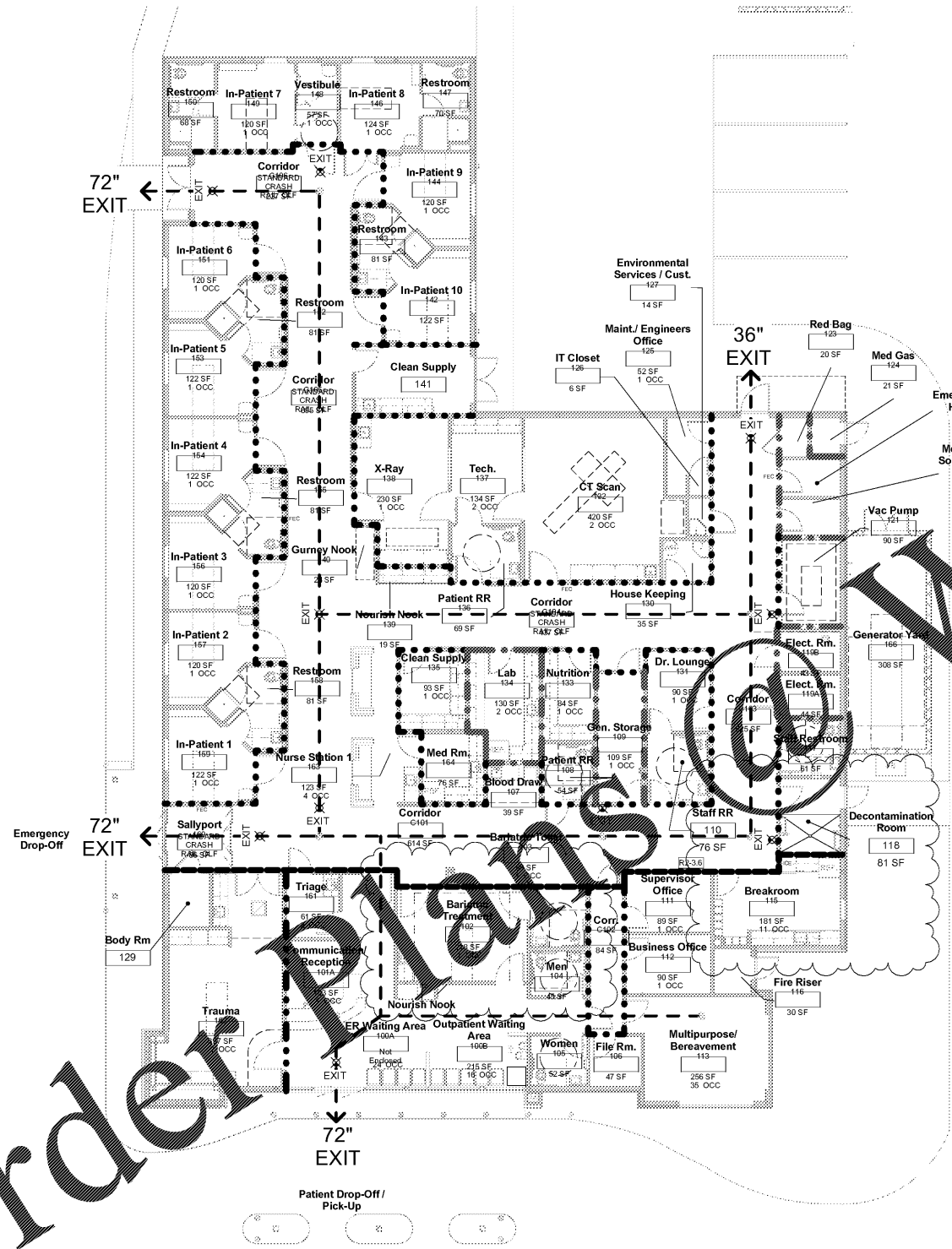
EXIT ACCESS REQUIREMENTS	UNIT REQS.	PROVIDED	REMARKS
MIN. CORRIDOR WIDTH	44" MIN. 96" MIN. PER I-2 1019.2.6	48" AT EMPLOYEE AREAS. 102" AT PATIENT AREAS FOR BEDS	IBC 2012 - TABLE 1019.2
MAX. DEAD END CORRIDOR (FEET)	20' MAX. OR 2.5 WIDTH OF CORR.	NONE	IBC 2012 - 1019.4
MEANS OF EGRESS REQS. FOR HABITABLE ROOMS IN I-2	REQUIRE EXIT ACCESS DOOR DIRECT TO CORR.	MEETS REQS.	IBC 2012 - 407.4.1
MAX. TRAVEL DISTANCE FOR EXIT ACCESS FOR I-2	50' MAX	MEETS REQS.	IBC 2012 - 407.4.2
MAX. TRAVEL DIST. FROM ANY POINT IN A CARE STE. WITH SLEEPING ROOMS TO EXIT ACCESS DOOR	100' MAX	MEETS REQS.	IBC 2012-1014.3
SEPARATION FOR SUITES IN I-2	SEPERATED FROM OTHER PORTIONS BY SMOKE PARTITION	ADDRESSED TO MEET REQUIREMENTS	IBC 2012 - 407.5
MAXIMUM EXIT ACCESS TRAVEL (FEET)	200' MAX.	95'	NA

PLUMBING FIXTURE CALCULATIONS - (IBC - TABLE 2902.1)

	REQUIRED		PROVIDED		
	MEN	WOMEN	M	W	UNISEX
WATER CLOSETS 1.25 FOR STAFF (64) 1.75 FOR VISITORS (49) 1 ROOM FOR PATIENTS OR 1.2 ROOMS SHARED BATH	2 1 10 (6)	2 1	2 1 1	2 1 1	6 IN ROOMS
URNALS (EQ. TO LESS THAN 50%)	NA	NA			
LAVATORIES 1.35 FOR STAFF (64) 1.100 FOR VISITORS (49) 1 ROOM FOR PATIENTS OR 1.2 ROOMS SHARED BATH	2 1 10 (6)	2 1	2 1 1	2 1 1	6 IN ROOMS
DRINKING FOUNTAINS 1:100 FOR STAFF (64) 1:500 FOR VISITORS (49) 1:100 FOR PATIENTS	1 1 0			2 PROVIDED	
SERVICE SINKS	1 REQUIRED			2 PROVIDED	

FIRE/ LIFE SAFETY GENERAL NOTES

- ADDRESS TO CLEARLY VISIBLE FROM STREET VIEW. APPROVAL OF TEXT SIZE AND PLACEMENT TO BE COORDINATED W/ GC AND STATE FIRE MARSHAL.
- GC TO PROVIDE KNOX BOX AND MOUNT AT LOCATION/HEIGHT AS APPROVED BY STATE FIRE MARSHAL.
- GC TO PROVIDE AND INSTALL ADOQUATE AMOUNT OF FIRE EXTINGUISHERS AS REQUIRED WITHIN A MIN. OF 75 LINEAR FEET (LF) THAT FULLY ENCOMPASSES ENTIRE PROJECT. SPECIFIED/NOTED FIRE EXTINGUISHER WITHIN A CABINETS (FEC) AND/OR EXTINGUISHER ON WALL BRACKET (FE). GC TO VERIFY FINAL COUNT AND PLACEMENT OF ALL EXTINGUISHERS WITH STATE FIRE MARSHAL REQUIREMENTS AND INSTRUCTIONS.
- EMERGENCY LIGHTING SHALL BE PROVIDED WITH A VALUE OF ONE(1) FOOT CANDLE AT FLOOR LEVEL AND BE ASSIGNED TO A 24-HOUR CIRCUIT.
- GC TO PROVIDE AND INSTALL ILLUMINATED EXIT SIGNAGE AS DENOTED IN CONTRACT DOCUMENTS AND IN ACCORDANCE WITH LOCAL CODES AND REGULATIONS, ON A TWENTY-FOUR (24) HOUR CIRCUIT.
- EVERY EXTERIOR EGRESS DOORS WITH A 50 OR MORE EGRESS LOAD SHALL BE OPENED FROM THE INSIDE WITHOUT THE USE OF A KEY OR ANY SPECIAL KNOWLEDGE OR EFFORT, SPECIAL LOCKING DEVICES (PANIC HARDWARE) SHALL BE OF A TYPE APPROVED BY THE LOCAL FIRE MARSHAL.
- GC TO PROVIDE AND INSTALL FIRE/SMOKE DAMPERS AND DOORS WITHOUT EXCEPTION AT ALL FIRE/SMOKE RATED WALLS AND CEILING ASSEMBLIES WITHOUT EXCEPTION.
- GC TO MAINTAIN AISLES AT LEAST 44" WIDE IN ALL PUBLIC AREAS.
- MAXIMUM PATH OF TRAVEL TO AN EXIT TO THE EXTERIOR FOR AN INTERIOR EGRESS HALLWAY WITHIN THE PROJECT DOES NOT EXCEED TWO HUNDRED (200) LINEAR FEET (LF). REFER TO MAXIMUM TRAVEL PATH INDICATED IN LIFE SAFETY PLAN.



- FACP: FIRE ALARM CONTROL PANEL
- FEC: FIRE EXTINGUISHER CABINET

Order Plans

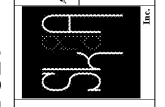
WWW.LDMLINE.COM

LDMLINE ARCHITECTURE
 1100 BOBBELL AVENUE SUITE H1
 BAYON ROUGE, LA 70009
 TEL: 504.833.7406



Prairieville General Hospital
 37358 Market Place Dr.
 Prairieville, LA 70769

Shawn Kesteron and Associates
 Robert C. Murray, AIA
 Architecture & Construction Services
 13480 Brandeis Blvd., Ste. 202
 Metairie, LA 70002
 Tel: 214.945.5116
 Email: SKA@shawnkesteron.com



Project No. 1607050

Drawn: ANMMH

Checked: MRH

Date: 11.22.17

No.	Description	Date
5	Revision 5	Nov 13

G002
 Life Safety

CONSTRUCTION REISSUE SET