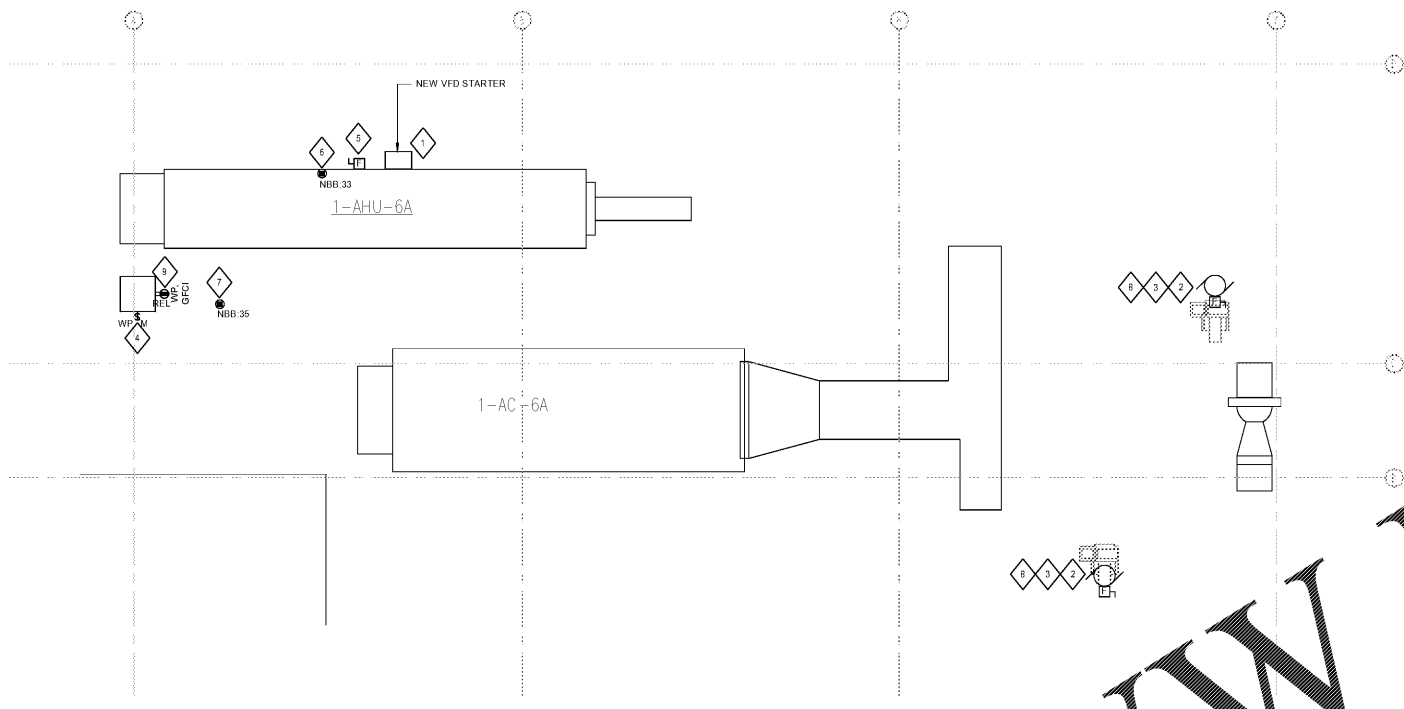


A  
B  
C  
D  
E  
F



**GENERAL NOTES**

1. FOR EXACT LOCATION AND FINISHED SURFACE CONDITIONS OF CEILING, WALL AND FLOOR MOUNTED DEVICES, REFER TO ARCHITECTURAL DRAWINGS, ELEVATIONS AND REFLECTED CEILING PLANS.
2. ALL ROOF ELECTRICAL EQUIPMENT SHALL BE SOURCED TO 'NBBE02' LOCATED IN THE BASEMENT. CIRCUITS WITH DESIGNATION 'NBB' SHALL BE FED FROM EXISTING PANEL 'NBBE02'. SEE SHEET E200 FOR LOCATION OF 'NBBE02' IN BASEMENT.
3. DEDUCT ALTERNATE TO REUSE EXISTING WIRING AND EXISTING RACEWAY.

**SHEET KEYNOTES**

1. INSTALL NEW VFD AND CONNECT TO NEW FUSED DISCONNECT.
2. PROVIDE AND MOUNT DISCONNECTS TO UNSTRUCT MOUNTING ADJACENT TO VFDs. EXTEND EXISTING RACEWAY TO NEW EXHAUST FANS CONNECTIONS.
3. CONTRACTOR TO ANALYZE NEW CONDITIONS TO DETERMINE LIGHTNING PROTECTION REQUIREMENTS FOR ROOFTOP MECHANICAL EQUIPMENT.
4. PROVIDE AND INSTALL WEATHERPROOF MOTOR RATED SWITCH CONNECTIONS TO NEW STEAM GENERATOR. REUSE EXISTING CIRCUIT AND RACEWAY.
5. PROVIDE AND INSTALL FUSED DISCONNECT TO MATCH EXISTING MOUNT IN SAME FASHION AS EXISTING. CONNECT EXISTING CIRCUIT AND RACEWAY.
6. PROVIDE 120V 20A 1PH DEDICATED CIRCUIT TO MATCH EXISTING TO EXISTING AHU. CONNECTION WITH MC.
7. PROVIDE 120V 20A 1PH DEDICATED CIRCUIT AND RACEWAY TO HEAT TRACE CONTROL PANEL. COORDINATE CONTROL PANEL LOCATION WITH MC.
8. PROVIDE 120V 20A 1PH DEDICATED CIRCUIT AND RACEWAY TO POWER CONNECTION FROM PANEL 'NBBE02' TO CONTROL VALVES PANEL. COORDINATE CONTROL PANEL LOCATION WITH MC.
9. CONNECT RELOCATED RECEPTACLE ON NEW STEAM GENERATOR TO EXISTING 120V 20A 1PH CIRCUIT AND RACEWAY.

**1 POWER PLAN - ROOF**  
1/4" = 1'-0"

www.LDILine.com

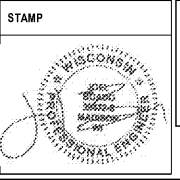
Order Plans @

10/05/2017 10:43:57 AM  
C:\Users\KJES\Documents\Rev\_2018\_Land\p1754500\_OBVAMC\_Pharmacy\_Jordan.nt

Revisions:	Date:

**CONSULTANT**  
 Consultant:  
  
 5802 Research Park Boulevard  
 Madison, WI 53719  
 608.238.2616  
 aeeng.com

**ARCHITECT/ENGINEER OF RECORD**  
 A/E:  
  
 LACHIN Architects, APC  
 Architecture, Planning, Project Management  
 5190 Canal Boulevard, Suite 201  
 New Orleans, LA 70124  
 (504)835-8013



Office of Construction and Facilities Management

Drawing Title	Project Title
ELECTRICAL POWER FLOOR PLAN - ROOF	RENOVATE PHARMACY CLEAN ROOM (USP 797)
Approved:	Location
	510 E. Stoner Ave. Shreveport, LA 71101

Phase	Project Number
CONSTRUCTION DOCUMENTS	667-17-108
	Building Number
	1
	Drawing Number
	E202

Issue Date	Checked	Drawn
10/05/2017	RRK	KJS