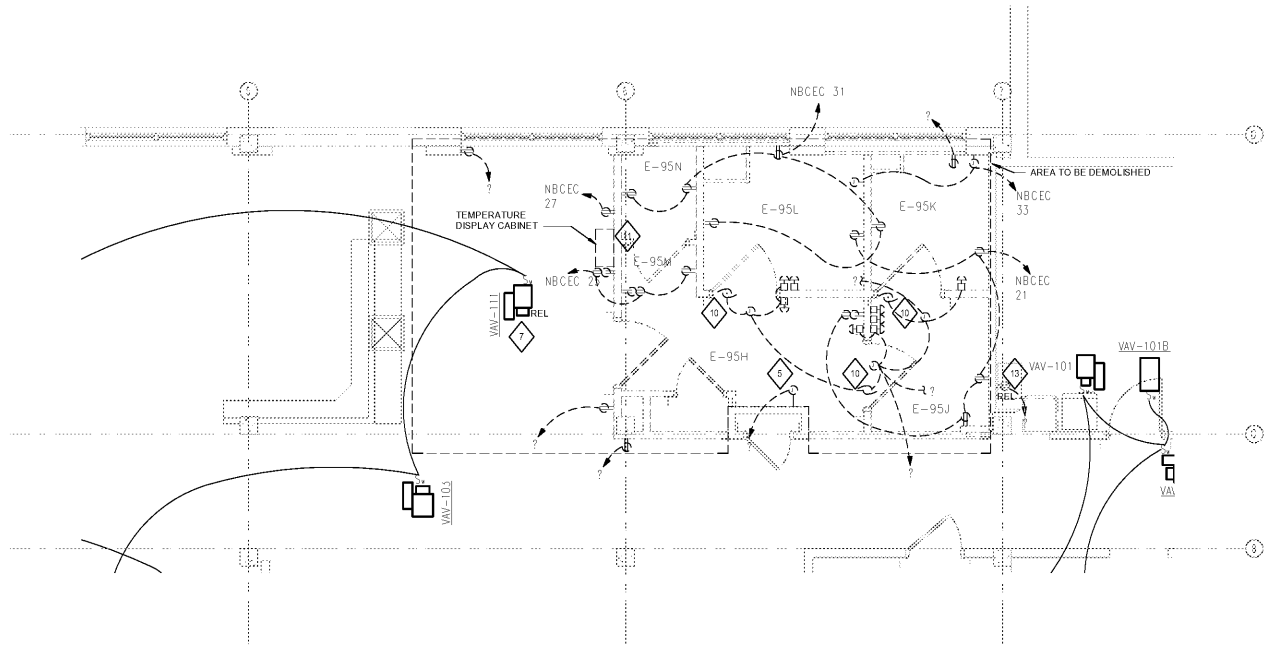
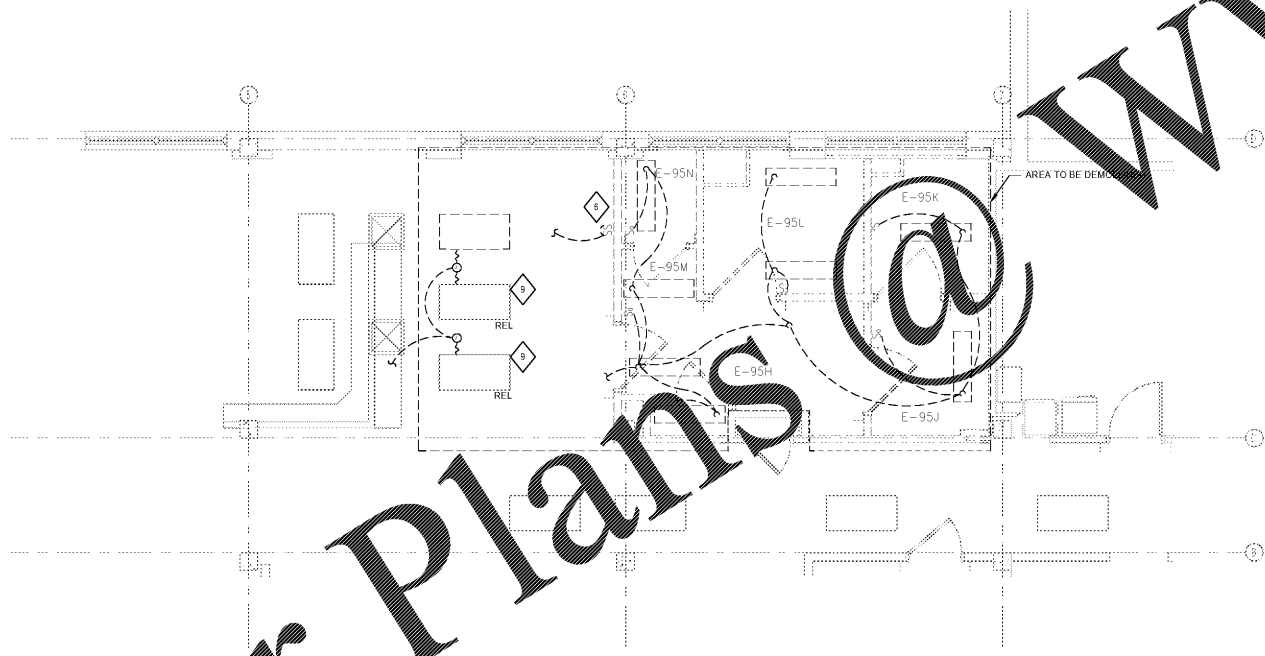


A B C D E F T



3 POWER DEMOLITION PLAN - FIRST FLOOR  
1/4" = 1'-0"



2 LIGHTING DEMOLITION PLAN - FIRST FLOOR  
1/4" = 1'-0"

GENERAL NOTES

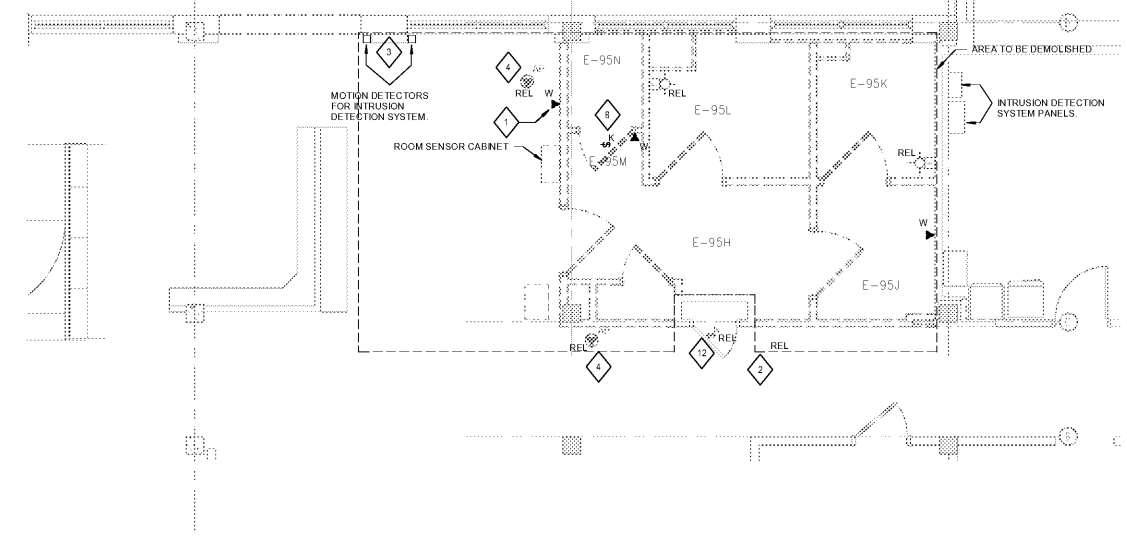
1. FOR EXACT LOCATION AND FINISHED SURFACE CONDITIONS OF CEILING, WALL, AND FLOOR MOUNTED DEVICES, REFER TO ARCHITECTURAL DRAWINGS, ELEVATIONS AND REFLECTED CEILING PLANS.
2. DEDUCT ALTERNATE TO REUSE EXISTING WIRING AND EXISTING RACEWAY.
3. POWER CIRCUIT HOMERUNS DENOTED AS "T" WERE NOT ABLE TO BE DETERMINED DURING FIELD OBSERVATION. VALIDATE SOURCE OF CIRCUIT PRIOR TO DEMOLITION WORK.

DEMOLITION NOTES

1. DEMOLITION DRAWINGS SHOWING EXISTING CONDITIONS HAVE BEEN PREPARED BASED ON FIELD OBSERVATION AND EXISTING ELECTRICAL DRAWINGS. ADDITIONAL COMPONENTS MAY EXIST WHICH DO NOT SHOW AND SUCH ITEMS SHALL BE DEALT WITH IN A MANNER SIMILAR TO THOSE ITEMS, WHICH DO SHOW.
2. CONTRACTOR SHALL THOROUGHLY FAMILIARIZE THEMSELVES WITH EXISTING ELECTRICAL SYSTEM, WHICH WILL BE AFFECTED BY THE DEMOLITION/REMODELING WORK. OBTAIN EXISTING AS BUILT DRAWINGS FOR REVIEW PRIOR TO BEGINNING WORK.
3. IN DEMOLITION/REMODELED AREAS ANY FEEDERS, CONDUITS, BRANCH CIRCUITS, SIGNAL AND TELEPHONE CIRCUITS, ETC. PASSING THROUGH THESE AREAS TO SERVE REMOTE OR SURROUNDING AREAS THAT ARE TO REMAIN, SHALL BE RETAINED AND KEPT OPERATIONAL AND SHALL BE REROUTED IN ALL CASES WHERE THEY INTERFERE WITH ANY NEW WORK.
4. EXCEPT WHERE OTHERWISE SHOWN OR NOTED ON DRAWING TO BE RETAINED OR RELOCATED, ALL EXISTING ELECTRICAL EQUIPMENT AND MATERIAL IN AREAS TO BE REMODEL/ALTERED SHALL BE REMOVED.
5. ALL LUMINAIRES, DISCONNECTS, TIME CLOCKS, PANELS, ETC. REMOVED SHALL REMAIN THE PROPERTY OF THE OWNER AND BE TURNED OVER TO THE COR. CONDUIT BOXES, WIRING AND MISCELLANEOUS ELECTRICAL SCRAP SHALL BE REMOVED FROM THE PROJECT.
6. DISCONNECT AND REMOVE EXISTING LUMINAIRES. REMOVE BRACKETS, STAYS, HANGERS, AND OTHER ACCESSORIES. WIRING TO BE ABANDONED. FIELD VERIFY IF WIRING AND CONDUIT HAVE TO BE RETAINED FOR EXISTING LUMINAIRES THAT ARE TO REMAIN.
7. PATCH AND REPAIR WALL SURFACES WHICH ARE REQUIRED BY THE REMOVAL OF MOUNTED ELECTRICAL AND MECHANICAL DEVICES. REFER TO ARCHITECTURAL DRAWINGS FOR ADDITIONAL INFORMATION.

SHEET KEYNOTES

1. DISCONNECT WALL MOUNTED PHONE AND TURN OVER TO COR.
2. REMOVE PA SPEAKER FROM AREA CLOSED OFF DURING DEMOLITION AND CONSTRUCTION. COORDINATE WITH COR TO DETERMINE PHASING OF DISCONNECT AND RELOCATION OF WIRELESS ACCESS POINTS IN THE DEMOLITION AREA.
3. DEMO MOTION DETECTORS FOR INTRUSION DETECTION SYSTEM.
4. CEILING MOUNTED WIRELESS ACCESS POINTS COORDINATE WITH COR TO DETERMINE PHASING OF DISCONNECT AND RELOCATION OF WIRELESS ACCESS POINTS IN THE DEMOLITION AREA.
5. REMOVE CONSTRUCTION BOX WITH COVER PLATE. CONTRACTOR TO VALIDATE EXISTING CIRCUIT, IF ANY.
6. DEMO EXISTING LIGHT SWITCHES AND EXISTING SWITCH LEG CIRCUITS AND RELOCATE SWITCHES IN PHARMACY SHALL BE REMOVED FOR THE DURATION OF THE RENOVATION.
7. DISCONNECT EXISTING POWER CONNECTION TO VAV-111 AND RELOCATE POWER CONNECTION TO NEW LOCATION OF VAV-111.
8. REMOVE CEILING MOUNTED FIRE SMOKE DETECTOR TEST SWITCH.
9. DISCONNECT AND REMOVE (2) EXISTING LIGHT FIXTURES AND PLACE IN SECURE STORAGE. LIGHT FIXTURES TO BE RELOCATED IN NEW CONSTRUCTION. SEE SHEET 301 FOR NEW LOCATIONS.
10. CONTRACTOR TO VALIDATE POWER DOOR CIRCUIT AND REUSE EXISTING CIRCUIT AND RACEWAY IF POSSIBLE.
11. DEMO POWER CIRCUIT AND RACEWAY TO TEMPERATURE DISPLAY CABINET.
12. EXISTING TO REMAIN CEILING MOUNTED FIRE SMOKE DETECTOR TEST SWITCH COORDINATE WITH COR TO DETERMINE DISCONNECT AND RELOCATION OF TEST SWITCH IN THE DEMOLITION AREA.
13. EXISTING CIRCUIT AND RECEPTACLE TO REFRIGERATOR TO BE RELOCATED TO NEW REFRIGERATOR LOCATION. SEE SHEET 209 FOR NEW LOCATION. PATCH AND REPAIR WALL SURFACE OR INSTALL COVER PLATE.



1 SYSTEMS DEMOLITION PLAN - FIRST FLOOR  
1/4" = 1'-0"

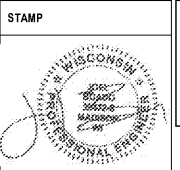
Order Plans @

WWW.LDOnline.com

Revisions:	Date:

**CONSULTANT**  
 Consultant:  
**AEI Affiliated Engineers**  
 5802 Research Park Boulevard  
 Madison, WI 53719  
 608.238.2616  
 aeieing.com

**ARCHITECT/ENGINEER OF RECORD**  
 A/E:  
**LA LACHIN Architects, apc**  
 Architecture . Planning . Project Management  
 5190 Canal Boulevard, Suite 201  
 New Orleans, LA 70124  
 (504)835-8013



Office of Construction and Facilities Management  
**VA** U.S. Department of Veterans Affairs

Drawing Title	ELECTRICAL DEMO PLAN - FIRST FLOOR
Approved:	

Phase	CONSTRUCTION DOCUMENTS
-------	------------------------

Project Title	RENOVATE PHARMACY CLEAN ROOM (USP 797)
Location	510 E. Stoner Ave. Shreveport, LA 71101
Issue Date	10/05/2017
Checked	RRK
Drawn	KJS

Project Number	667-17-108
Building Number	1
Drawing Number	E101