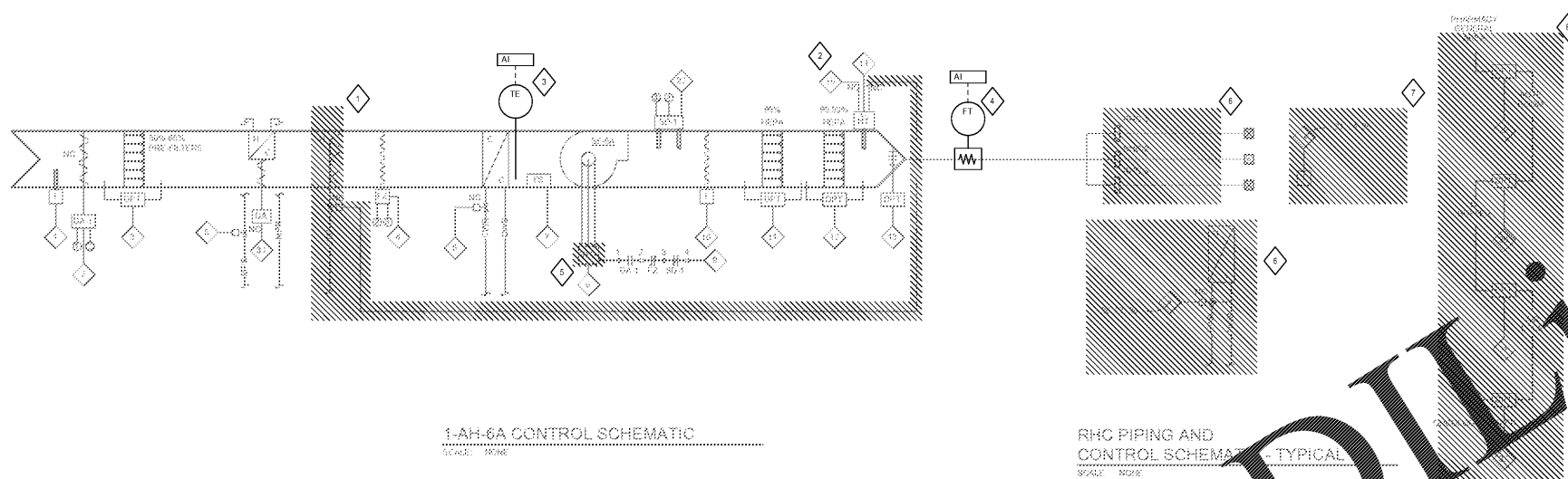


10/02/2017 10:25:11 AM  
 C:\Users\jph...Documents\Rev 2018 Loc...7540-00-CB\VA-MC-Pharmacy...  
 T



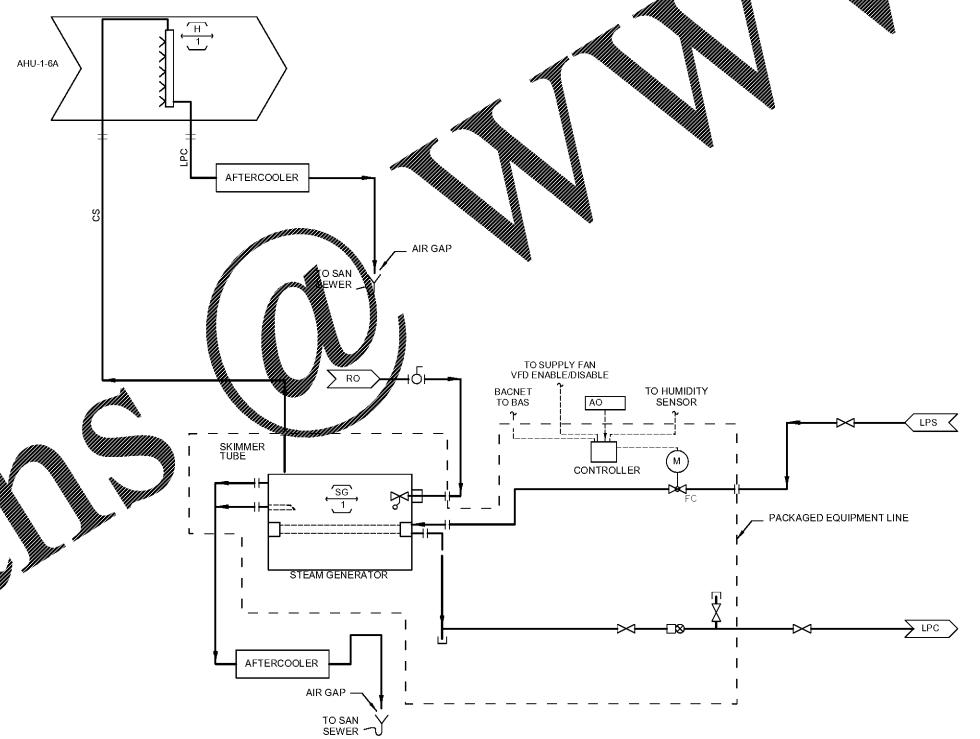
**1 EXISTING AHU-1-6A INSTRUMENTATION DIAGRAM**  
NTS

**GENERAL NOTES**

1. THIS CONTROL DIAGRAM IS ONLY INTENDED TO PROVIDE CONTROL AND INSTRUMENTATION RELATED INFORMATION. REFER TO MECHANICAL DETAILS AND SPECIFICATIONS FOR VALVING, DAMPING AND ASSOCIATED SPECIALTIES INSTALLATION REQUIREMENTS.
2. REFER TO FLOOR PLANS, DETAILS AND SPECIFICATIONS FOR SIZES OF EQUIPMENT, ADDITIONAL TRUNK AND FIT SPECIALTIES AND CAPACITIES OF EQUIPMENT.
3. OTHER DEVICES INSTRUMENTATION SHOWN HERE ARE MINIMAL. PROVIDE ADDITIONAL CONTROL DEVICES AS NECESSARY TO MEET SPECIFIED CONTROL.

**SHEET KEYNOTES**

1. REMOVE EXISTING CONTROLS ASSOCIATED WITH EXISTING STEAM GENERATOR AND EXISTING HUMIDIFIER.
2. EXISTING HUMIDITY SENSOR TO REMAIN. INTEGRATE INTO NEW STEAM GENERATOR AND HUMIDIFIER CONTROLS.
3. INSTALL NEW TEMPERATURE SENSOR DOWNSTREAM OF EXISTING COOLING COIL. INTEGRATE WITH NEW COOLING COIL CONTROL SEQUENCE.
4. INSTALL NEW AIRFLOW MONITOR IN SUPPLY DUCT DOWN STREAM OF AHU. MONITOR AIRFLOW AT THE BAS.
5. VFD TO BE REPLACED BY OTHERS. INTEGRATE NEW VFD INTO EXISTING CONTROLS.
6. EXISTING REHEAT COILS TO BE REMOVED. REMOVE ASSOCIATED CONTROLS.
7. REMOVE EXISTING ROOM TEMPERATURE SENSORS.
8. REMOVE EXISTING ROOM PRESSURE DIFFERENTIAL MONITORS.



**2 STEAM GENERATOR AND HUMIDIFIER INSTRUMENTATION DIAGRAM**  
NTS

Revisions:	Date:

**CONSULTANT**

Consultant:  
  
 5802 Research Park Boulevard  
 Madison, WI 53719  
 608.238.2616  
 aeieeng.com

**ARCHITECT/ENGINEER OF RECORD**

A/E:  
  
 Architecture, Planning, Project Management  
 5190 Canal Boulevard, Suite 201  
 New Orleans, LA 70124  
 (504)835-8013

**STAMP**

Office of  
 Construction  
 and Facilities  
 Management

**VA** U.S. Department  
 of Veterans  
 Affairs

Drawing Title  
**MECHANICAL CONTROLS**

Approved:

Phase  
**CONSTRUCTION DOCUMENTS**

Project Title  
**RENOVATE PHARMACY CLEAN ROOM (USP 797)**

Location  
 510 E. Stoner Ave. Shreveport, LA 71101

Issue Date  
 10/05/2017

Checked  
 KGF

Drawn  
 JBP

Project Number  
 667-17-108

Building Number  
 1

Drawing Number  
**M901**