

FIRE PROTECTION SYMBOLS AND ABBREVIATIONS

SYMBOLS INDICATED HERE AND NOT USED IN THE CONTRACT DOCUMENTS DO NOT APPLY TO THIS PROJECT. ADDITIONAL SYMBOLS MAY BE INDICATED IN THE CONTRACT DOCUMENTS.

GENERAL SYMBOLS

- XF— EXISTING FIRE SUPPLY
- F— FIRE SUPPLY
- XSPR— EXISTING SPRINKLER PIPE
- SPR— SPRINKLER PIPE
- DSPR— DRY SPRINKLER PIPE
- GALV— GALVANIZED SPRINKLER PIPE
- W— WATER SERVICE
- ELBOW DOWN
- ELBOW UP
- TEE DOWN
- TEE UP
- PIPE CAP OR FLUSHING CONNECTION
- ◇— DRY PIPE VALVE ASSEMBLY
- ◇— PREACTION VALVE ASSEMBLY
- ◇— DELUGE VALVE ASSEMBLY
- ◇— SPRINKLER ZONE CONTROL VALVE ASSEMBLY

- SPRINKLER HEAD REFER TO DRAWING SPRINKLER HEAD LEGEND FOR TYPE
- ▨ DEMOLITION OF PIPING, DEVICE, ETC.
- PIPE SIZE (TOP INDICATES PIPE SIZE) (BOTTOM INDICATES CENTER TO CENTER PIPE LENGTH)

REFERENCE SYMBOLS

- NEW CONNECTION TO EXISTING
- ◇ KEYNOTE REFERENCE

ABBREVIATIONS

- AC - AIR COMPRESSOR
- ACC - ACCESS
- ACV - ALARM CHECK VALVE
- ADJ - ADJUSTABLE
- AFF - ABOVE FINISHED FLOOR
- ALT - ALTERNATE
- AP - ACCESS PANEL
- APPROX - APPROXIMATE
- ARCH - ARCHITECTURAL
- ASSY - ASSEMBLY
- ATS - AUTOMATIC TRANSFER SWITCH
- BLDG - BUILDING
- BOP - BOTTOM OF PIPE
- BOT - BOTTOM
- BTWN - BETWEEN
- CFCI - CONTRACTOR FURNISHED CONTRACTOR INSTALLED
- CL - CENTERLINE
- CLG - CEILING
- CONN - CONNECTION / CONNECT
- CONTR - CONTRACTOR
- CORR - CORRIDOR
- CU - COPPER
- D - DEPTH/DRAIN LINE
- DCBP - DOUBLE CHECK BACKFLOW PREVENTER
- DDBP - DOUBLE DETECTOR BACKFLOW PREVENTER
- DET - DETAIL
- DIA - DIAMETER
- DM - DIMENSION
- DN - DOWN
- DSR - DRY SPRINKLER PIPE
- DWG - DRAWING
- EA - EACH
- ELEV - ELEVATION
- EQUIP - EQUIPMENT
- EXT - EXISTING TO REMAIN
- EXT - EXTERIOR
- F - FIRE SUPPLY
- FACP - FIRE ALARM CONTROL PANEL
- FCC - FIRE DEPARTMENT CONNECTION
- FDV - FIRE DEPARTMENT VALVE
- FHC - FIRE HOSE CABINET
- FHR - FIRE HOSE REACK
- FLR - FLOOR
- FMG - FACTORY MUTUAL GLOBAL FIRE PUMP CONTROLLER
- FPTH - FIRE PUMP TEST HEADER
- FS - FLOW SWITCH
- FT - FEET
- FTG - FOOTING
- FVC - FIRE VALVE CABINET
- GA - GAUGE
- GAL - GALLON
- GALV - GALVANIZED
- GPM - GALLONS PER MINUTE
- IBC - INTERNATIONAL BUILDING CODE
- ID - INSIDE DIAMETER
- IE - INVERT ELEVATION
- IFC - INTERNATIONAL FIRE CODE
- IN - INCHES
- L - LENGTH
- LBS - POUNDS
- MAX - MAXIMUM
- MEZZ - MEZZANINE
- MFR - MANUFACTURER
- MIN - MINIMUM / MINUTE
- MISC - MISCELLANEOUS
- MTD - MOUNTED
- MTG - MOUNTING
- NFPA - NATIONAL FIRE PROTECTION ASSOCIATION
- NO - NUMBER
- NOM - NOMINAL
- NPT - NATIONAL PIPE THREAD
- NTS - NOT TO SCALE
- OC - ON CENTER
- OD - OUTSIDE DIAMETER
- OCFI - OWNER FURNISHED CONTRACTOR INSTALLED
- OFI - OWNER FURNISHED OWNER INSTALLED
- PV - POST INDICATOR VALVE
- PLBG - PLUMBING
- PRESS - PRESSURE
- PRV - PRESSURE REDUCING VALVE
- PSF - POUNDS PER SQUARE FOOT
- PSI - POUNDS PER SQUARE INCH
- PSIG - POUNDS PER SQUARE INCH GAUGE
- RAD - RADIUS
- REC - RECEIVED
- REQD - REQUIRED
- RI - ROUGH IN
- RP - REVOLUTIONS PER MINUTE
- RPSP - REDUCED PRESSURE ZONE BACKFLOW PREVENTER
- RV - RELIEF VALVE
- SCH - SCHEDULE
- SHT - SHEET
- SPEC - SPECIFICATION
- SPR - SPRINKLER
- SQ - SQUARE
- S/S - STAINLESS STEEL
- STRU - STRUCTURAL / STRUCTURE
- TEMP - TEMPERATURE
- TC - TEST CELL
- TOB - TOP OF BEAM
- TOD - TOP OF DECK
- TOL - TOP OF JOIST
- TOS - TOP OF SLAB / TOP OF STEEL
- TYP - TYPICAL
- UBC - UNIFORM BUILDING CODE
- UPF - UNIFORM FIRE CODE
- UNO - UNLESS NOTED OTHERWISE
- V - VALVE
- VEL - VELOCITY
- VESDA - VERY EARLY SMOKE DETECTION APPARATUS
- VOL - VOLUME
- W - WIDTH
- WI - WITH
- W/O - WITHOUT
- X - EXISTING

SHEET KEYNOTES

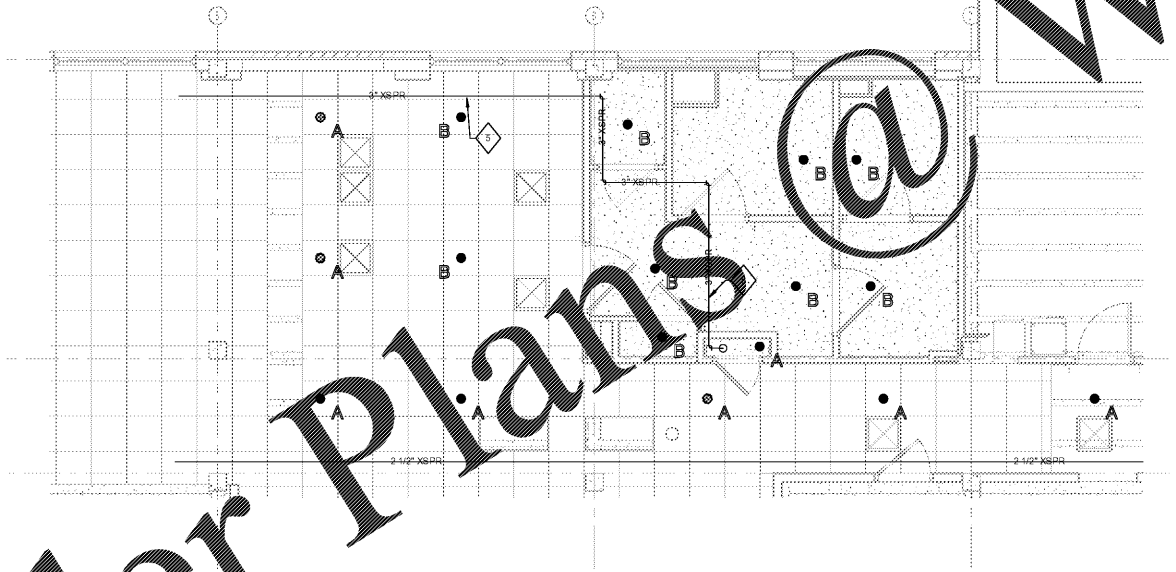
- TEMPORARY PARTITION TO BE INSTALLED BY GENERAL CONTRACTOR. FIRE PROTECTION CONTRACTOR TO PROVIDE TEMPORARY SPRINKLER PROTECTION PER NFPA 13. AS NOTED IN SPRINKLER HEAD LEGEND TEMPORARY SPRINKLERS SHALL BE REMOVED WHEN THE TEMPORARY PARTITION IS REMOVED. FIRE PROTECTION CONTRACTOR TO COORDINATE TIMING OF SPRINKLER REMOVAL WITH GENERAL CONTRACTOR.
- PROVIDE NEW SPRINKLER HEADS AS NEEDED TO THE REMODELED SPACE. SPRINKLERS SHALL BE QUICK-RESPONSE, CONCEALED TYPE WITH WHITE COVER PLATES AND DUST SEALS ATTACHED. COORDINATE WITH ALL NEW CEILING FIXTURES TO ENSURE PROPER AND UNOBSTRUCTED COVERAGE IN CEILING BEFORE INSTALLATION.
- POSITION SPRINKLERS TO PROTECT THIS SPACE AS AN ORDINARY HAZARD GROUP 1 OCCUPANCY.
- POSITION SPRINKLERS TO PROTECT THIS SPACE AS A LIGHT HAZARD OCCUPANCY.
- FIRE PROTECTION CONTRACTOR TO COORDINATE WITH GENERAL CONTRACTOR AND OTHER TRADES TO DETERMINE IF EXISTING SPRINKLER MAIN NEEDS TO BE RELOCATED TO ALLOW INSTALLATION OF OTHER MEP EQUIPMENT. FIRE PROTECTION CONTRACTOR TO RELOCATE EXISTING MAIN AS NEEDED.

GENERAL NOTES

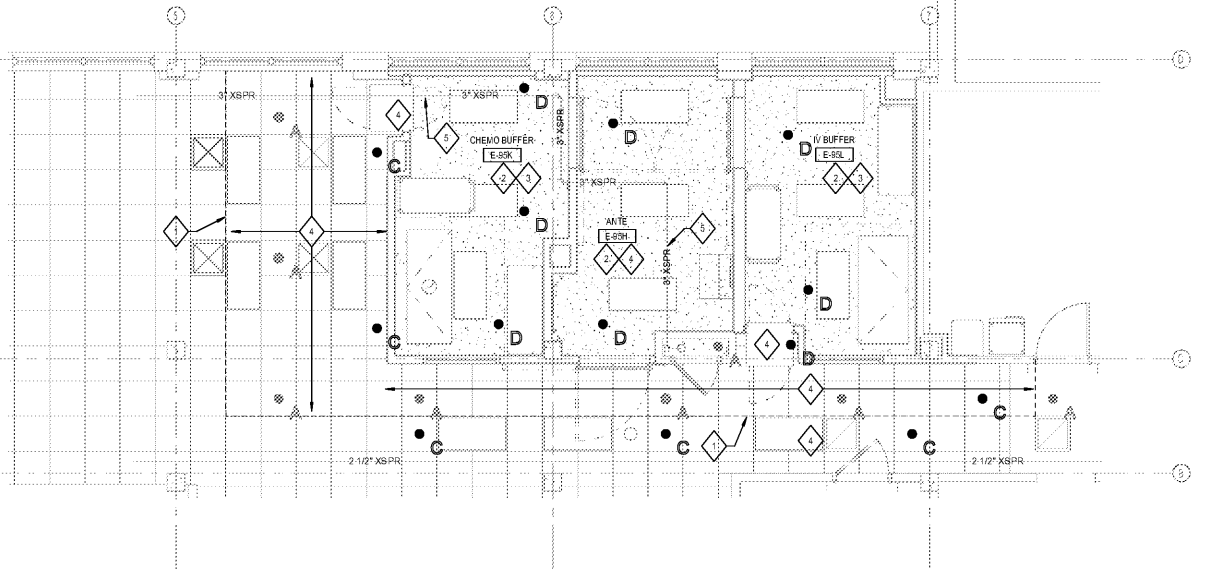
- COORDINATE ALL DEMOLITION WORK WITH OWNER TO MINIMIZE DOWN TIME AND DISRUPTIONS.
- REFER TO DIVISION 21 FIRE PROTECTION SPECIFICATIONS FOR FIRE PROTECTION PRODUCTS, REQUIREMENTS, AND EXECUTION FOR ALL MATERIALS AND WORKMANSHIP PROVIDED. REVIEW ALL CONTRACT DOCUMENTS PRIOR TO BID AND PRIOR TO INSTALLATION.
- INSTALLATION OF SPRINKLER SYSTEM SHALL BE IN ACCORDANCE WITH NFPA 13, STANDARD FOR THE INSTALLATION OF SPRINKLER SYSTEMS - 2016 EDITION.
- CONTRACTOR SHALL BE HELD RESPONSIBLE TO HAVE EXAMINED "REFLECTED CEILING" DRAWINGS AS WELL AS MECHANICAL, ELECTRICAL, PIPING, INFORMATION TECHNOLOGY, STRUCTURAL AND ARCHITECTURAL BUILDING PLANS AND TO SYSTEMS.
- CONTRACTOR SHALL COORDINATE ROUTING OF PIPING WITH OTHER TRADES AS WELL AS PROJECT ARCHITECT. CONTRACTOR SHALL PARTICIPATE IN COORDINATION PROCESS AND SHALL NOT INSTALL PIPING PRIOR TO COORDINATION WITH OTHER TRADES.
- SPRINKLER HEADS SHALL BE QUICK-RESPONSE AND APPROVED PER VA DESIGN MANUAL 6.1.K.
- SPRINKLER CONTRACTOR SHALL COORDINATE WITH STAFF TO ENSURE SPRINKLER PROTECTION IS PROVIDED DURING THE REMODEL. FOR EXAMPLE, EXISTING SPRINKLER SYSTEM SHALL REMAIN IN PLACE AFTER SUSPENDED CEILINGS ARE REMOVED AND SHALL BE MODIFIED TO PROVIDE SPRINKLER PROTECTION OF THE TEMPORARY REMODEL CONDITIONS PER NFPA 13. EXISTING SPRINKLER SYSTEM SHALL ALSO BE MODIFIED TO ACCOMMODATE OTHER MEP IT INSTALLATIONS. CONCURRENTLY, INSTALLATION OF THE NEW SPRINKLER SYSTEM SHALL BE COORDINATED WITH THE INSTALLATION OF NEW MEP IT SYSTEMS. UPON MODIFICATIONS, SPRINKLER CONTRACTOR SHALL COORDINATE WITH THE CONTRACTOR OFFICER REPRESENTATIVE (COR) BEFORE SHUT DOWN OF THE EXISTING SPRINKLER SYSTEM OCCURS. SPRINKLER CONTRACTOR SHALL COORDINATE WITH THE STAFF TO RELOCATE THE EXISTING SPRINKLER SYSTEM AFTER WORK IS COMPLETE. OUTAGES SHALL BE LIMITED TO 4 HOURS.
- ALL EXISTING PIPING AND EQUIPMENT LOCATIONS SHOWN ARE BASED ON AVAILABLE INFORMATION AND FIELD OBSERVATIONS. CONTRACTORS SHALL VERIFY LOCATIONS AND FIELD LOCATIONS PRIOR TO BID, DEMOLITION, AND INSTALLATION.
- FIRE PROTECTION CONTRACTOR SHALL AVOID CREATING DEAD LEGGED AND TRAPPED SPRINKLER PIPING. ALL FIRE PROTECTION PIPE RELATED TO DEMOLISHED SPRINKLER DROPS OR ABANDONED BRANCHLINES SHALL BE ENTIRELY REMOVED TO THE POINT OF CONNECTION AT SPRINKLER BRANCHLINE OR MAIN. OUTLETS FOR DEMOLISHED SPRINKLER DROPS OR ABANDONED BRANCHLINES SHALL BE PLUGGED OR CAPPED.
- THIS BUILDING HAS A IBC/FEMA SEISMIC CATEGORY OF "A" AND A U.S. DEPT. OF VETERANS AFFAIRS SEISMIC CATEGORY OF "L". SEISMIC RESTRAINT OF SPRINKLER PIPING IS NOT REQUIRED ON THIS PROJECT PER U.S. DEPT. OF VETERANS AFFAIRS GUIDELINES H 18-8, DATED 10/1/2016.

SPRINKLER HEAD LEGEND (FOR BASIS OF DESIGN ONLY)

SYMBOL	STYLE	THERMAL SENSITIVITY	FINISH	TEMP. RATING	NOTES
● A	SEMI-RECESSED	QUICK RESPONSE	CHROME	ORDINARY	EXISTING TO REMAIN
● B	SEMI-RECESSED	QUICK RESPONSE	CHROME	ORDINARY	EXISTING TO BE REMOVED
● C	SEMI-RECESSED	QUICK RESPONSE	CHROME	ORDINARY	TEMPORARY - REMOVE AFTER CONSTRUCTION
● D	CONCEALED	QUICK RESPONSE	PAINTED WHITE	ORDINARY	NEW INSTALLATION TO REMAIN INCLUDE DUST SEAL



1 FIRE PROTECTION DEMOLITION PLAN - FIRST FLOOR
1/4" = 1'-0"



2 FIRE PROTECTION PLAN - FIRST FLOOR
1/4" = 1'-0"

10/8/2017 10:08:38 AM
 C:\Users\CDM\Documents\Rev. 2018 Lead\p017540-00_CBVAMC Pharmacy_Cadmas\ESG.dwg

Revisions:

No.	Description	Date

CONSULTANT

Consultant:

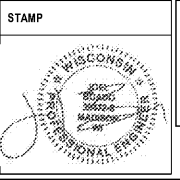
AEI Affiliated Engineers

5802 Research Park Boulevard
Madison, WI 53719
608.238.2616
aeieng.com

ARCHITECT/ENGINEER OF RECORD

A/E:

LA LACHIN Architects, apc
Architecture, Planning, Project Management
5190 Canal Boulevard, Suite 201
New Orleans, LA 70124
(504)835-8013



Office of Construction and Facilities Management

VA U.S. Department of Veterans Affairs

Drawing Title

FIRE PROTECTION DEMO AND FLOOR PLAN - FIRST FLOOR

Approved:

Phase

CONSTRUCTION DOCUMENTS

Project Title

RENOVATE PHARMACY CLEAN ROOM (USP 797)

Project Number: 667-17-108

Building Number: 1

Location: 510 E. Stoner Ave. Shreveport, LA 71101

Issue Date: 10/05/2017

Checked: TJH

Drawn: CMD

Drawing Number: F101