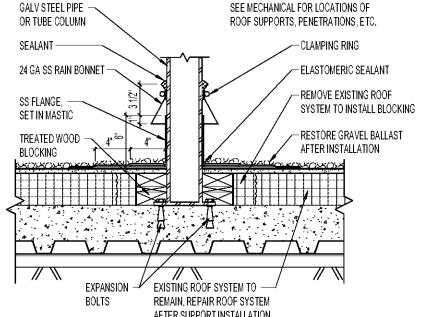
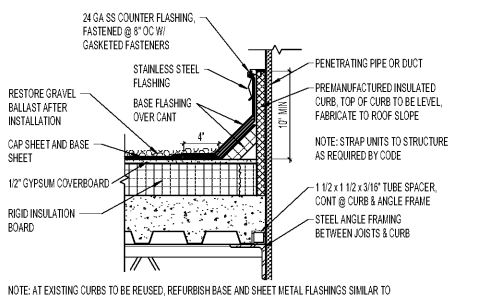


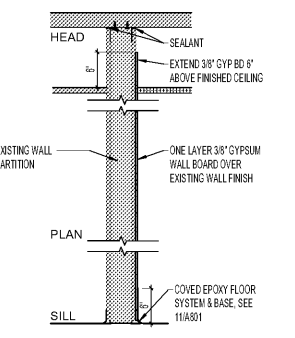
12
A801
DETAIL AT MIRROR EDGE, TYP
12" x 1'-0"



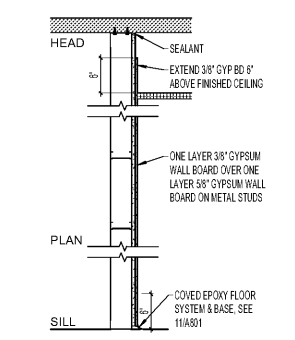
8
A801
ROOF EQUIPMENT SUPPORT DETAIL
1 1/2" x 1'-0"



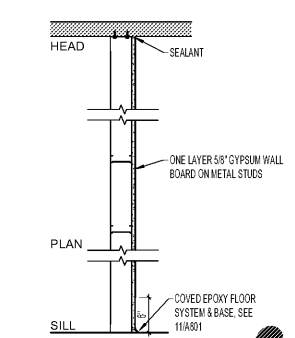
9
A801
ROOF CURB DETAIL
1 1/2" x 1'-0"



TYPE	STUD SIZE	OVERALL WIDTH	FIRE RATING	STC RATING
C2	2-1/2"	3-1/2"		
C3	3-5/8"	4-5/8"		

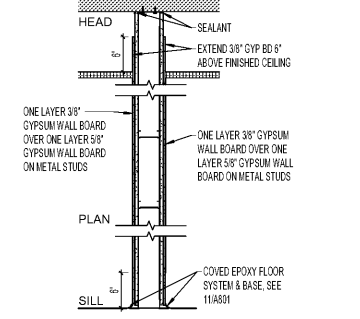


TYPE	STUD SIZE	OVERALL WIDTH	FIRE RATING	STC RATING
B2	2-1/2"	3-1/2"		
B3	3-5/8"	4-5/8"		

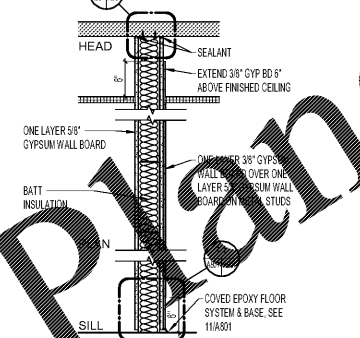


TYPE	STUD SIZE	OVERALL WIDTH	FIRE RATING	STC RATING
A2	2-1/2"	3-1/2"		
A3	3-5/8"	4-1/4"		

PARTITION TYPES

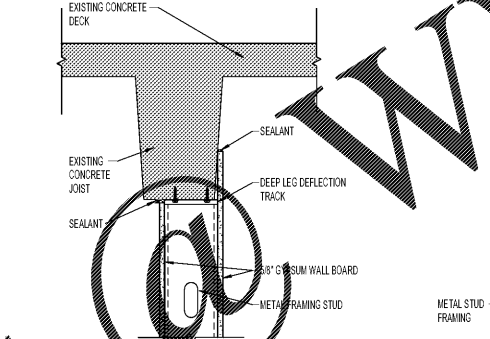


TYPE	STUD SIZE	OVERALL WIDTH	FIRE RATING	STC RATING
E2	3-5/8"	5-5/8"		
E3	5"	8"		

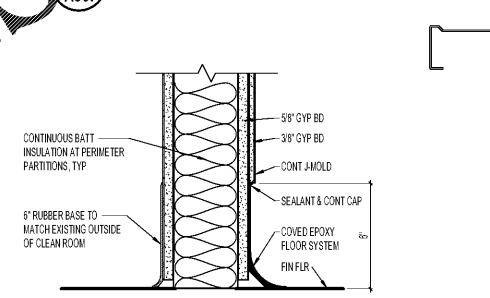


TYPE	STUD SIZE	OVERALL WIDTH	FIRE RATING	STC RATING
D2	3-5/8"	5-1/4"		
D3	3-5/8"	5-1/4"		

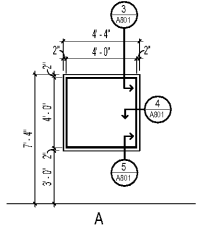
10
A801
WALL HEAD DETAIL
1 1/2" x 1'-0"



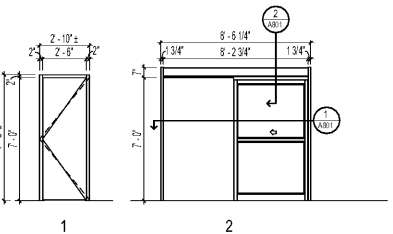
6
A801
TYP HORIZ SECTION @ CEILING COVE AT ALL EXTERIOR CORNERS
6" x 1'-0"



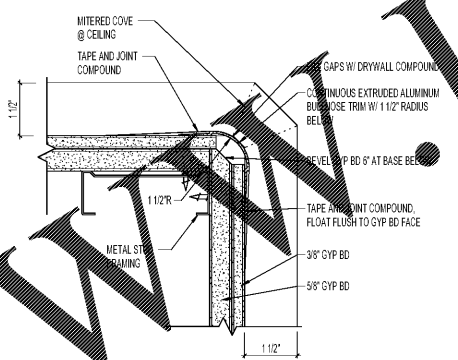
11
A801/A801
BASE COVE DETAIL
3" x 1'-0"



WINDOW TYPES



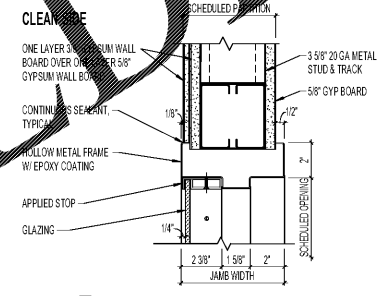
DOOR TYPES



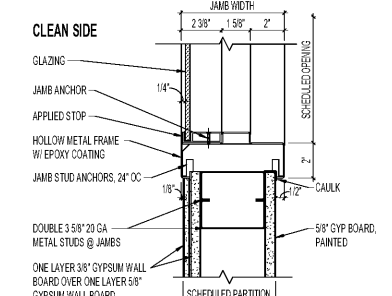
7
A801
TYP HORIZ SECTION @ CEILING COVE AT ALL INTERIOR WALL AND CEILING CORNERS
6" x 1'-0"

DOOR AND FRAME SCHEDULE														
MARK	RATING (Minutes)	NUMBER OF PANELS	PANELS			FRAME							REMARKS	
			PANEL 1	PANEL 2	OVERALL	HEIGHT	THK	FINISH	TYPE	DEPTH	FINISH	ELEV		HWD
1	-	1	4'-0"		8'-6 1/4"	7'-0"	1 7/8"	Clear Anodized	Alum		Clear Anodized	2	Per Mfg	
2	-	1	4'-0"		8'-6 1/4"	7'-0"	1 7/8"	Clear Anodized	Alum		Clear Anodized	2	Per Mfg	
3	-	1	4'-0"		8'-6 1/4"	7'-0"	1 7/8"	Clear Anodized	Alum		Clear Anodized	2	Per Mfg	
4	-	1	2'-6"		2'-6"	7'-0"	1 3/4"	WD	HM	5 3/4"	Field Varnished	1	Existing stain, refinish and field	

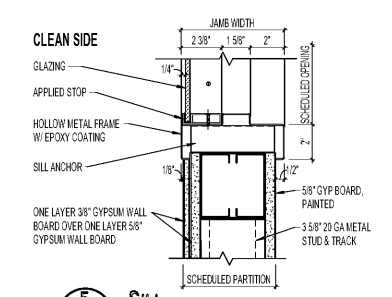
WINDOW SCHEDULE												
WV	OPENING		TYPE	MATERIAL	HEAD	JAMB	SILL	GLAZING	ELEV	HWD	REMARKS	
	WIDTH	HEIGHT										
A	4'-0"	4'-0"	Single Panel	Painted HM	3/A801	4/A801	5/A801	1/4"	Tempered		Epoxy finish on Clean Room Side - Paint on Pharmacy Side	



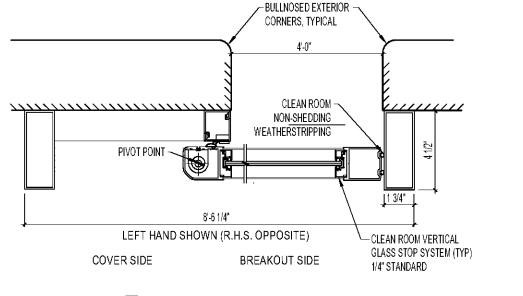
3
A801/A801
HEAD
3" x 1'-0"



4
A801/A801
JAMB
3" x 1'-0"



5
A801/A801
SILL
3" x 1'-0"



2
A801/A801
HEAD / SILL
3" x 1'-0"

Order Plans
 www.LDOnline.com

CONSULTANT Consultant: EYP/ 1111 Louisiana, 26th Floor Houston, TX 77002 (713)665-5665 Chris Collier, AIA	ARCHITECT/ENGINEER OF RECORD A/E: LA LACHIN Architects, apc Architecture . Planning . Project Management 5190 Canal Boulevard, Suite 201 New Orleans, LA 70124 Michael G. Lachin (504)835-8013	STAMP 	Office of Construction and Facilities Management U.S. Department of Veterans Affairs	Drawing Title INTERIOR DETAILS Approved:	Phase Construction Documents	Project Title RENOVATE PHARMACY CLEAN ROOM (USP 797) Location 510 E. Stoner Ave. Shreveport, LA 71101 Issue Date October 5, 2017 Checked PF Drawn BB	Project Number 667-17-108 Building Number 1 Drawing Number A801
--	---	-----------	---	---	--	--	---