

**1234 Clean Room**

CONTINUOUS BEVELED SEALANT JOINT ALL SIDES

58" Min Height

38" Min clear space

18" Min Letter Spacing

38" Min clear space

2" Max height 58" Min Height

COPY

45" Min

BRaille

58" Min Height

38" Min clear space

Approx 18"

38" Min clear space

E-05K CHEMO BUFFER

E-05L IV BUFFER

FIRE EQUIPMENT

FLOOR

SIGNAGE LEGEND			
SIGN NUMBER	SIGNAGE TYPE	SIGNAGE TEXT	NOTES
1	IN-04.02	ANTE	COORDINATE TEXT WITH COR
2	IN-04.02	CHEMO BUFFER	
3	IN-04.02	IV BUFFER	
4	IN-04.02	FIRE EQUIPMENT	

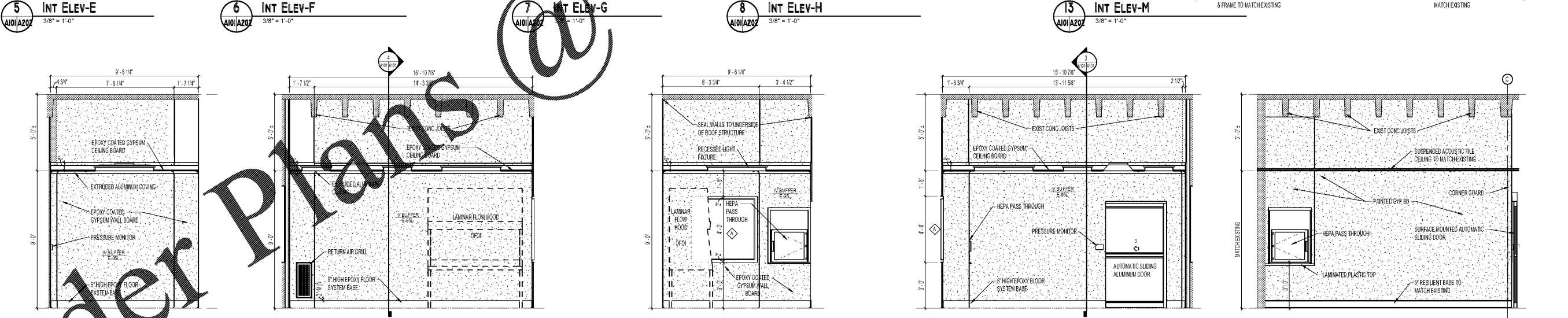
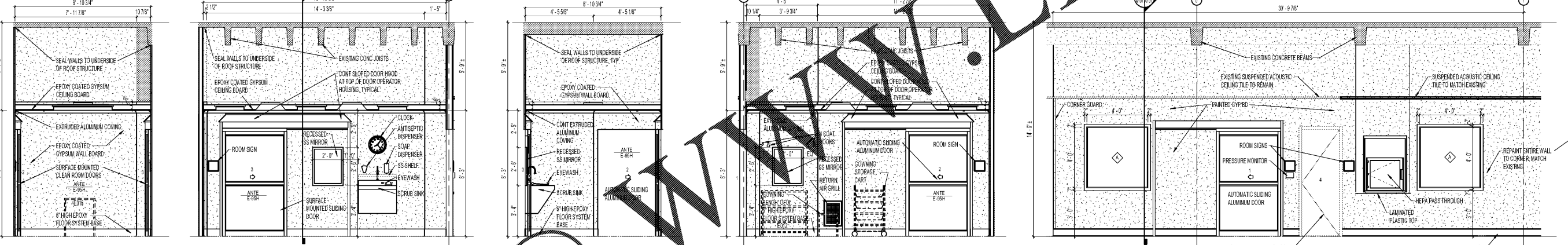
PROVIDE ONE SIGN AT EACH SLIDING DOOR AND ONE AT EXISTING SPRINKLER CLOSET, SEE A202

**GENERAL NOTES**

A. REFERENCE DRAWING A101 FOR ELEVATIONS.

B. NOT ALL ELEMENTS ARE SHOWN OR DIMENSIONED. ELEMENTS ARE SHOWN / DIMENSIONED WHERE SPECIFIC LOCATIONS ARE REQUIRED.

C. THE PERIMETER OF ALL WALL MOUNTED DEVICES AND ACCESSORIES SHALL BE SEALED IN THE FIELD WITH SILICONE SEALANT, INCLUDING, BUT NOT LIMITED TO: ROOM SIGNS, THERMOSTATS, HUMIDITY SENSORS, PRESSURE SENSORS, MONITORS, RECEPTACLE PLATES AND SWITCHES.



Revisions:	Date:

<p>CONSULTANT</p> <p>Consultant:</p> <p><b>EYP/</b></p> <p>1111 Louisiana, 26th Floor Houston, TX 77002 (713) 665-5665 Chris Caillier, AIA</p>	<p>ARCHITECT/ENGINEER OF RECORD</p> <p>A/E:</p> <p><b>LA</b> LACHIN Architects, apc</p> <p>Architecture, Planning, Project Management 5190 Canal Boulevard, Suite 201 New Orleans, LA 70124 (504) 835-8013 Michael G. Lachin</p>	<p>STAMP</p>	<p>Office of Construction and Facilities Management</p> <p>U.S. Department of Veterans Affairs</p>	<p>Drawing Title</p> <p>INTERIOR ELEVATIONS</p> <p>Approved:</p>	<p>Phase</p> <p>Construction Documents</p>	<p>Project Title</p> <p>RENOVATE PHARMACY CLEAN ROOM (USP 797)</p> <p>Location</p> <p>510 E. Stoner Ave. Shreveport, LA 71101</p> <p>Issue Date</p> <p>October 5, 2017</p> <p>Checked</p> <p>PF</p> <p>Drawn</p> <p>BB</p>	<p>Project Number</p> <p>667-17-108</p> <p>Building Number</p> <p>1</p> <p>Drawing Number</p> <p>A202</p>
--	--	--------------	--	--	--	--	---

Order Plans @ [www.walddilining.com](http://www.walddilining.com)

10/6/2017 2:32:14 AM  
 N:\Lachin\_Cad\Drawings\Revit\Revit\04\BAC\_Clean Room.rvt