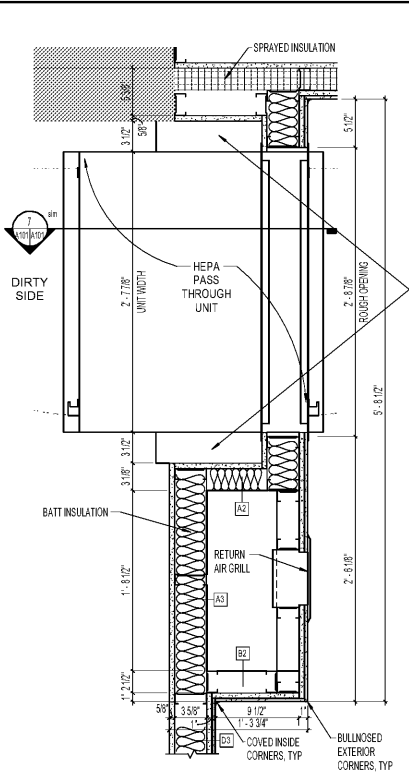


2 WALL SECTION 1
1/2" = 1'-0"

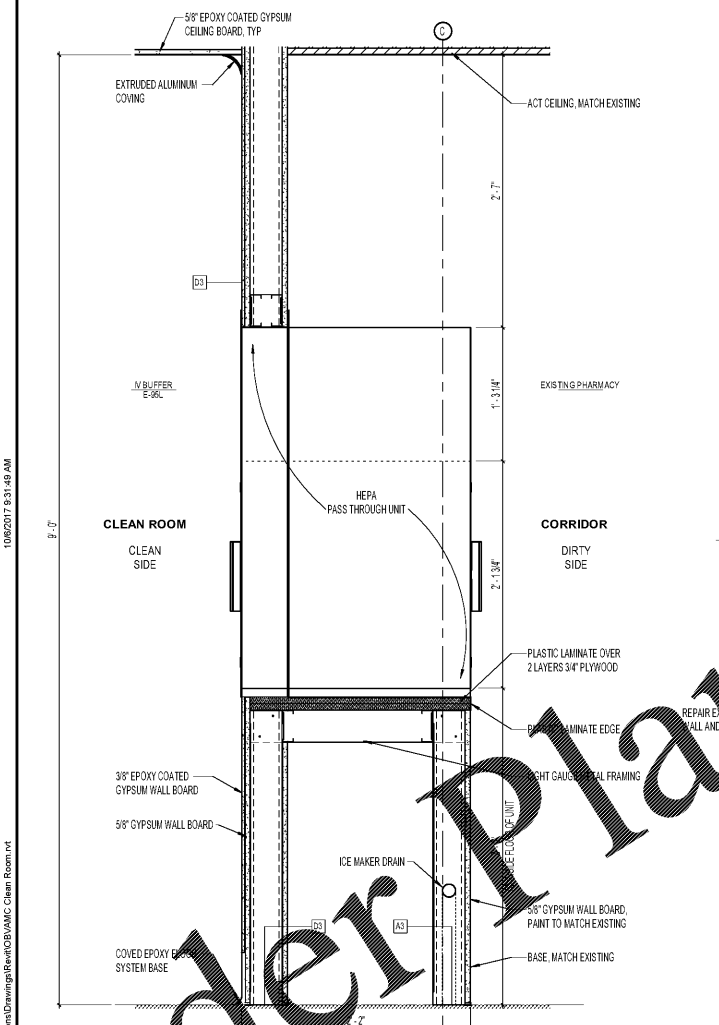
3 WALL SECTION 2
1/2" = 1'-0"

4 WALL SECTION 3
1/2" = 1'-0"

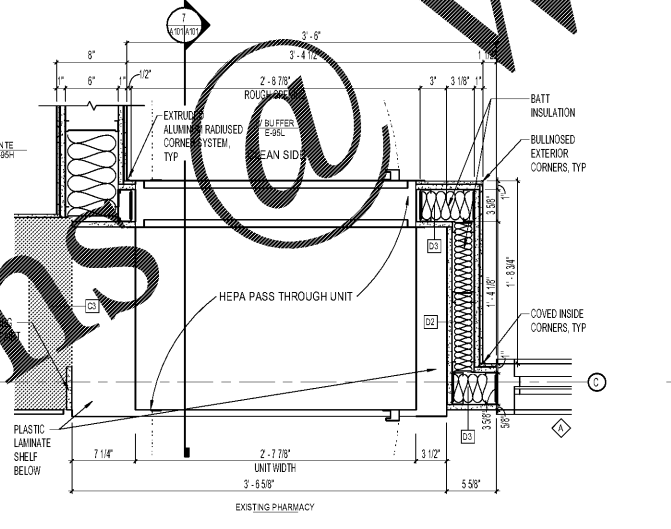
ALL CLEAN ROOM INTERIOR WALL PARTITIONS TO BE CONSTRUCTED OF 30 MIL METAL STUDS EXTENDING TO THE UNDERSIDE OF STRUCTURE. ALL JOINTS AND PENETRATIONS TO BE SEALED TO ENSURE AIR TIGHT INSTALLATION.



5 HORIZONTAL SECTION 1
1 1/2" = 1'-0"



SECTION - PASS THROUGH

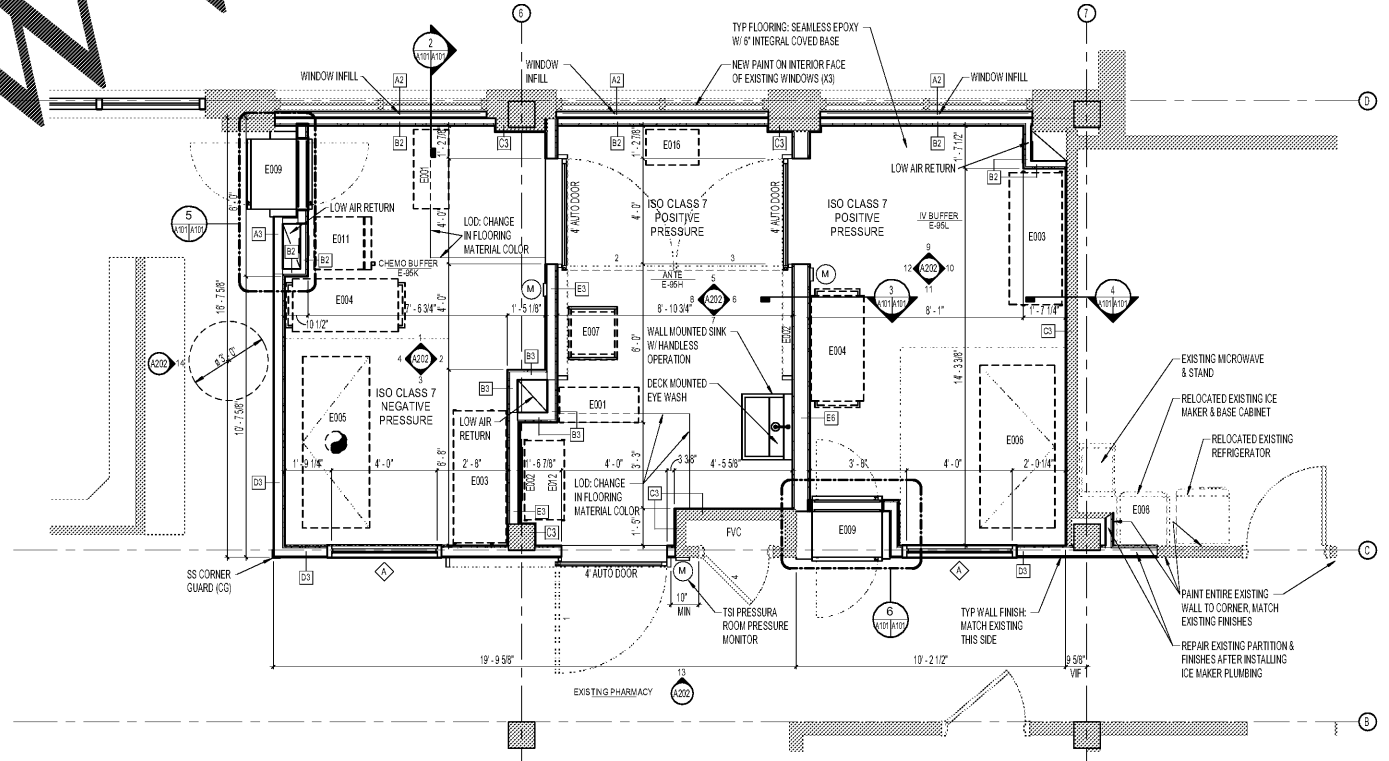


6 HORIZONTAL SECTION 2
1 1/2" = 1'-0"

EQUIPMENT SCHEDULE								
NUMBER	EQUIPMENT DESCRIPTION	QTY	MANUFACTURER	WIDTH	DEPTH	HEIGHT	WEIGHT	NOTES
E001	GOWNING BENCH	2		16"	36"		lbs	VFVI
E002	MIRROR	2	BORRICK, BRADLEY OR ASI	24"		30"	lbs	CFCI
E003	FLAT STAINLESS STEEL SHELVES	2		24"	60"	63"	lbs	VFVI
E004	FLAT STAINLESS STEEL CARTS	2		24"	48"		lbs	VFVI
E005	BSC	1	BAKER STERILGARD MODEL SG 804 CLASS II TYPE A2	77.69"	30.916"	105.116"	771 lbs	EP, V, B, C
E006	LAFW	1	BAKER EDGEWARD HORIZONTAL LAMINAR FLOW CLEAN BENCH MODEL EG6262	74"	34"	64"	880 lbs	EP, B, C
E007	GOWNING STORAGE CART	1		24"	22"	40"	lbs	VFVI
E008	ICE MAKER	1	SCOTTSMAN				lbs	RELOCATE EXISTING, CW, DR
E009	HEPA PASS THROUGH	2	TERRA UNIVERSAL				lbs	EP, BL
E011	REFRIGERATOR	1	EVOLVE 5.5 CU. FT. MEDICAL GRADE U.C.R.	23.6"	26"	31.8"	125 lbs	EP
E012	PPE	1						
E013	CLOCK	1	LA CROSSE TECHNOLOGY 404129JUM.SS	14" dia			3 lbs ±	ABOVE BATTERY OPERATED ATOMIC CLOCK
E014	SOAP DISPENSER	1						
E015	ANTISEPTIC DISPENSER	3						
E016	HOUSEKEEPING CART	1						

GENERAL EQUIPMENT NOTES			
A. REFER TO VENDOR DRAWINGS			
B. REFER TO EQUIPMENT DATA SHEETS FOR MORE DETAILS			
C. REFER TO ELECTRICAL DRAWINGS			
D. THE PERIMETER OF ALL WALL MOUNTED DEVICES AND ACCESSORIES SHALL BE SEALED IN THE FIELD WITH SILICONE SEALANT, INCLUDING BUT NOT LIMITED TO: ROOM SIGNS, THERMOSTATS, HANGERS, SENSORS, PRESSURE SENSORS, MONITORS, RECEPTACLE PLATES AND SWITCHES.			
EQUIPMENT SCHEDULE LEGEND			
BL	BLOCKING NEEDLE	EP	EPOXY
CA	COMPRESSED AIR	OV	OXYGEN
CW	COLD WATER	VAC	VACUUM WITH SLIDE
D	DATA	DR	DRAIN
EP	EMERGENCY POWER	DR	DRAIN
EVAC	VACUATION	TW	TREATED WATER
HW	HOT WATER	V	VENTED
MA	MEDICAL AIR	S	SUSPENDED FROM STRUCTURE
NITROGEN	NITROGEN	RE	REUSE / RELOCATE EXISTING
POWER	POWER		
OXYGEN	OXYGEN		
VACUUM WITH SLIDE	VACUUM WITH SLIDE		
DRAIN	DRAIN		
TREATED WATER	TREATED WATER		
VENTED	VENTED		
SUSPENDED FROM STRUCTURE	SUSPENDED FROM STRUCTURE		
REUSE / RELOCATE EXISTING	REUSE / RELOCATE EXISTING		
FURNISHED INSTALLED LEGEND			
CFCI	CONTRACTOR FURNISHED, CONTRACTOR INSTALLED		
VFCI	VIA FURNISHED, CONTRACTOR INSTALLED		
VFVI	VIA FURNISHED, VA INSTALLED		
VFKI	VIA FURNISHED, VENDOR (X) INSTALLED		

ROOM No	ROOM NAME	FLOOR	WALL FINISH												REMARKS	
			NORTH	SOUTH	EAST	WEST	NORTH	SOUTH	EAST	WEST	MAT'L	HEIGHT				
	EXISTING PHARMACY	Existing VCT	Match Existing	Match Existing	Match Existing	Match Existing	Match Existing	Match Existing	Match Existing	Match Existing	Match Existing	Match Existing	Match Existing	Match Existing		
E-95H	ANTE	Epoxy Floor System	Coved Epoxy Floor System w/ Integral Base	Coved Epoxy Floor System w/ Integral Base	Coved Epoxy Floor System w/ Integral Base	Coved Epoxy Floor System w/ Integral Base	Coved Epoxy Floor System w/ Integral Base	Coved Epoxy Floor System w/ Integral Base	Coved Epoxy Floor System w/ Integral Base	Coved Epoxy Floor System w/ Integral Base	Coved Epoxy Floor System w/ Integral Base	Coved Epoxy Floor System w/ Integral Base	Coved Epoxy Floor System w/ Integral Base	Coved Epoxy Floor System w/ Integral Base	8'-3"	Adjust Ceiling Height if necessary to fit Sliding Door Hood
E-95L	CHEMO BUFFER	Epoxy Floor System	Coved Epoxy Floor System w/ Integral Base	Coved Epoxy Floor System w/ Integral Base	Coved Epoxy Floor System w/ Integral Base	Coved Epoxy Floor System w/ Integral Base	Coved Epoxy Floor System w/ Integral Base	Coved Epoxy Floor System w/ Integral Base	Coved Epoxy Floor System w/ Integral Base	Coved Epoxy Floor System w/ Integral Base	Coved Epoxy Floor System w/ Integral Base	Coved Epoxy Floor System w/ Integral Base	Coved Epoxy Floor System w/ Integral Base	Coved Epoxy Floor System w/ Integral Base	9'-0"	
E-95L	IV BUFFER	Epoxy Floor System	Coved Epoxy Floor System w/ Integral Base	Coved Epoxy Floor System w/ Integral Base	Coved Epoxy Floor System w/ Integral Base	Coved Epoxy Floor System w/ Integral Base	Coved Epoxy Floor System w/ Integral Base	Coved Epoxy Floor System w/ Integral Base	Coved Epoxy Floor System w/ Integral Base	Coved Epoxy Floor System w/ Integral Base	Coved Epoxy Floor System w/ Integral Base	Coved Epoxy Floor System w/ Integral Base	Coved Epoxy Floor System w/ Integral Base	Coved Epoxy Floor System w/ Integral Base	9'-0"	



1 FLOOR PLAN
3/8" = 1'-0"

Order Plans @ WWW.WWJLINC.COM
 10/05/2017 5:31:48 AM
 N:\Lachin\Ch...TTC-OB\VAIC Pharmacy\Construction\Drawings\Rev\OB\VAIC Clean Room.rvt
 VA FORM 08-6231

Revisions:	Date:

CONSULTANT

Consultant:

EYP/

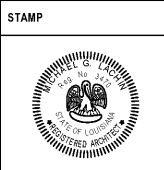
1111 Louisiana, 26th Floor
Houston, TX 77002
(713)665-5665
Chris Collier, AIA

ARCHITECT/ENGINEER OF RECORD

A/E:

LA LACHIN Architects, apc

Architecture - Planning - Project Management
5190 Canal Boulevard, Suite 201
New Orleans, LA 70124
(504)835-8013
Michael G. Lachin



Office of Construction and Facilities Management

U.S. Department of Veterans Affairs

Drawing Title

FLOOR PLAN

Approved:

Phase

Construction Documents

Project Title

RENOVATE PHARMACY CLEAN ROOM (USP 797)

Project Number: 667-17-108
Building Number: 1
Drawing Number: A101

Location: 510 E. Stoner Ave. Shreveport, LA 71101

Issue Date: October 5, 2017
Checked: PF
Drawn: BB