

ELECTRICAL CONNECTION TO MECHANICAL SCHEDULE

MARK	KW	HP	FLA	VOLTAGE	MCA	MOCP	CONDUCTORS & CONDUIT	DISCONNECT SWITCH & FUSE	SOURCE OF FEED	REMARKS
MAU-1	-	3/4	3.7	480V, 3Ø	4.6	15/3	3#12&1#12GRD-3/4"C	30/3, F15, RT	PPH-POOL	1,4
HP-1	-	-	36.0	208V, 3Ø	45.0	50/3	3#8&1#10GRD-1"C	60/3, F50, RT	RPL-POOL	1,4
DSHP-1	-	-	20.0	208V, 1Ø	25.0	40/2	2#8&1#10GRD-3/4"C	60/3, F40, RT	RPL-POOL	1,3,4
ECH-1	2.0	-	9.6	208V, 1Ø	12.0	15/2	2#12&1#12GRD-3/4"C	ST	RPL-POOL	4
EW-1	2.0	-	9.6	208V, 1Ø	12.0	15/2	2#12&1#12GRD-3/4"C	ST	RPL-POOL	4
KEF-1	-	1	1.8	480V, 3Ø	2.25	15/3	3#12&1#12GRD-3/4"C	30/3, F15, RT	PPH-POOL	1,4
EF-1	-	3/4	6.9	208V, 1Ø	8.6	15/2	2#12&1#12GRD-3/4"C	ST	RPL-PUMP	4
EF-2	-	3/4	6.9	208V, 1Ø	8.6	15/2	2#12&1#12GRD-3/4"C	ST	RPL-POOL	4
EW-2	2.0	-	9.6	208V, 1Ø	12.0	15/2	2#12&1#12GRD-3/4"C	ST	RPL-POOL	4
DSCU-1	-	-	10.4	208V, 1Ø	13.0	15/2	2#12&1#12GRD-3/4"C	ST	RPL-POOL	1,3,4

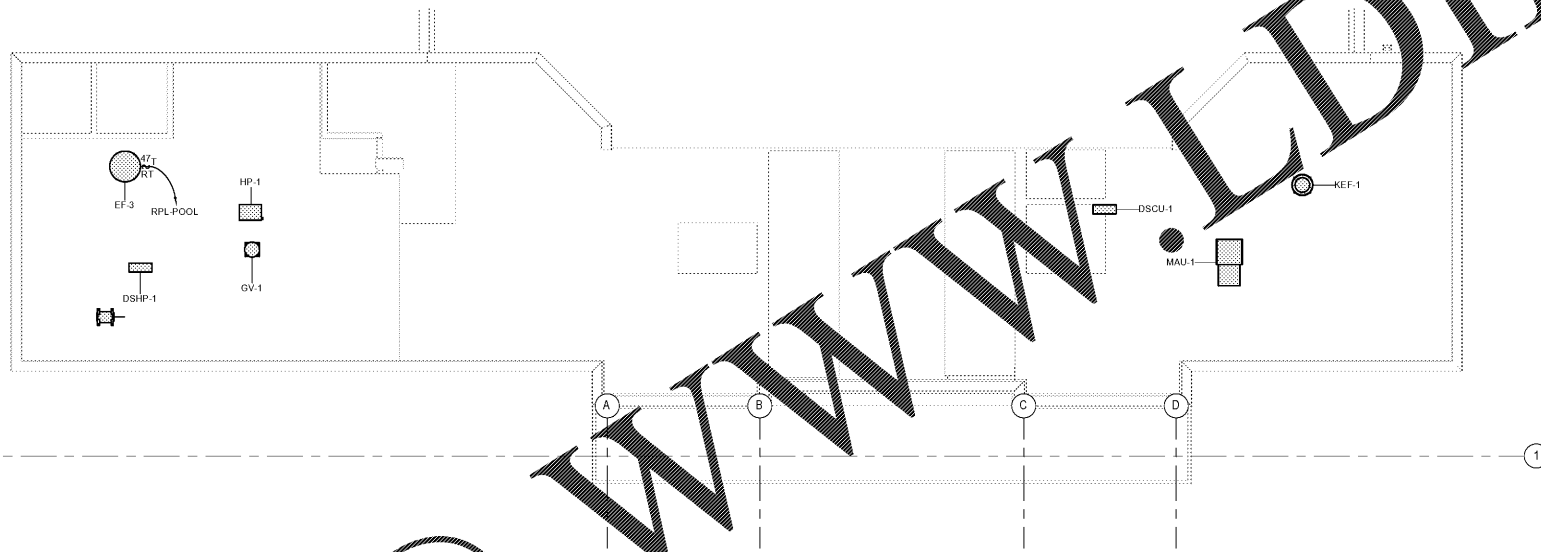
ABBREVIATIONS: FLA - FULL LOAD AMPERE MCA - MINIMUM CIRCUIT AMPERE MOCP - MAXIMUM OVER CURRENT PROTECTION
RT - RAIN TIGHT F-FUSE

GENERAL NOTES:

- HVAC UNITS AND EQUIPMENT LOCATIONS SHOWN HERE ARE FOR INFORMATION ONLY. FIELD VERIFY AND COORDINATE WITH MECHANICAL CONTRACTOR LOCATIONS OF ALL HVAC UNITS AND EQUIPMENT. COORDINATE LOCATIONS OF ALL ELECTRICAL EQUIPMENT WITH DUCTWORK AND PIPING. ELECTRICAL EQUIPMENT SHALL BE INSTALLED TO MEET THE WORK SPACE AND DEDICATED SPACE REQUIREMENTS PER THE NEC.
- SEE ELECTRICAL CONNECTION TO MECHANICAL EQUIPMENT SCHEDULE ON THIS SHEET FOR ELECTRICAL CONNECTION REQUIREMENTS.
- PROVIDE HACR RATED BREAKERS FOR HVAC EQUIPMENT.
- COORDINATE WITH HVAC CONTRACTOR FOR EQUIPMENT STARTERS TO BE FURNISHED BY MECHANICAL AND INSTALLED BY ELECTRICAL CONTRACTOR.
- COORDINATE LOCATION OF DUCT DETECTORS WITH MECHANICAL CONTRACTOR. LOCATE BELOW ROOF. COORDINATE WIRING OF INTERLOCK FROM FIRE ALARM FOR UNIT SHUTDOWN. DUCT SMOKE DETECTORS REMOTE TEST STATIONS SHALL BE LOCATED ON CEILING AT CORRIDOR AND LABELED WITH UNIT NAME.
- SUPPORT DISCONNECTS AND RECEPTACLES ON ROOF INDEPENDENTLY WITH STAINLESS STEEL UNISTRUT.

NOTES:

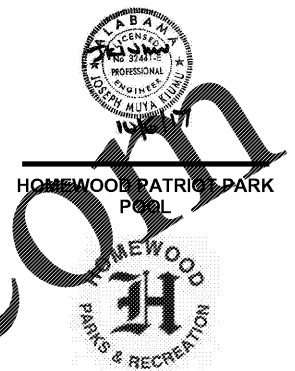
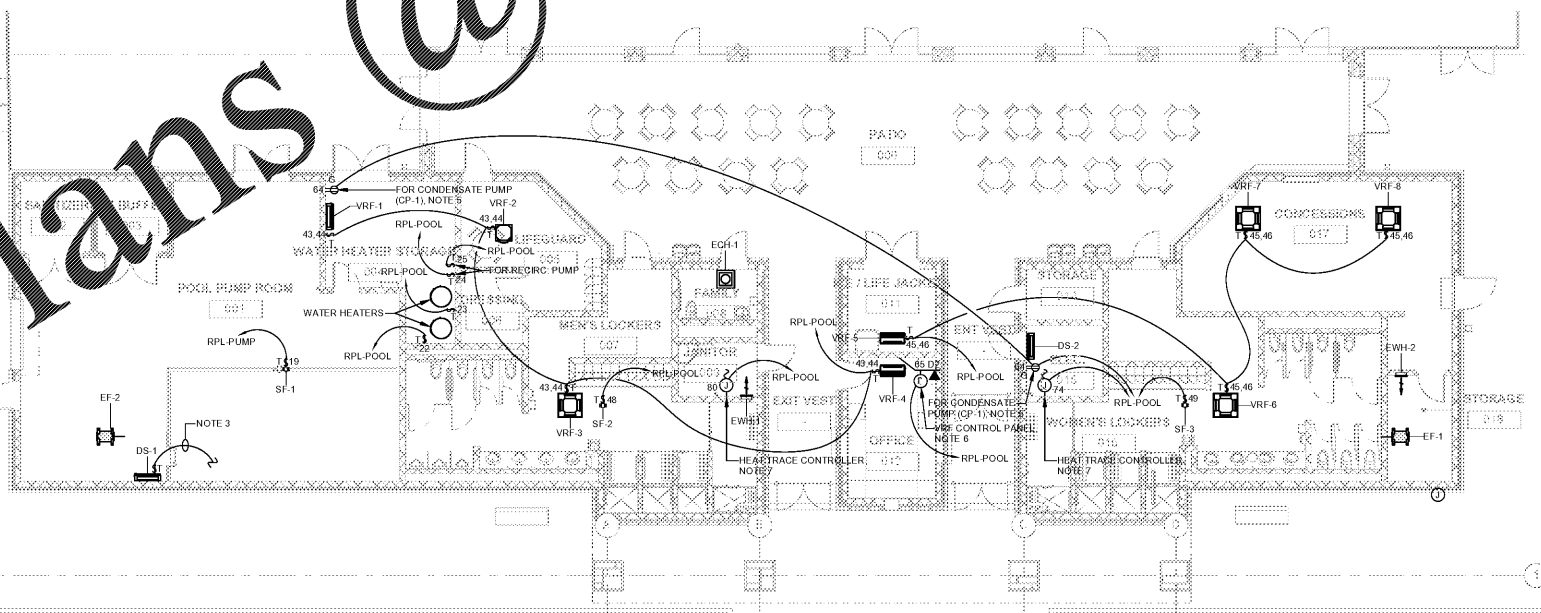
- ALL DISCONNECT SWITCHES ON MECHANICAL UNITS OUTSIDE SHALL BE RAIN TIGHT.
- UNIT MOUNTED DISCONNECT SWITCH, BY MECHANICAL.
- INDOOR UNITS POWERED FROM OUTDOOR UNIT THROUGH FIELD SUPPLIED WIRING BY ELECTRICAL CONTRACTOR. COORDINATE WORK WITH MECHANICAL.
- SEE PANELBOARD SCHEDULE FOR CIRCUIT NUMBERS.
- COORDINATE EXACT MOUNTING LOCATION AND HEIGHT OF RECEPTACLE FOR CONDENSATE PUMP WITH MECHANICAL CONTRACTOR BEFORE ROUGHING IN.
- COORDINATE EXACT MOUNTING LOCATION, HEIGHT AND ELECTRICAL CONNECTIONS FOR VRF CONTROL PANEL WITH MECHANICAL CONTRACTOR BEFORE ROUGHING IN.
- COORDINATE EXACT NUMBER AND ROUTING OF PIPE WITH MECHANICAL ENGINEER AND FIRE PROTECTION DRAWINGS BEFORE PURCHASING HEAT TRACE SYSTEM COMPONENTS.



2 ROOF PLAN - ELECTRICAL CONNECTION TO MECHANICAL
SCALE: 1/8" = 1'-0"



1 PARTIAL FLOOR PLAN - ELECTRICAL CONNECTION TO MECHANICAL
SCALE: 1/8" = 1'-0"



HOMWOOD PARKS AND RECREATION

DAVIS ARCHITECTS

OWNER
HOMWOOD PARKS AND RECREATION
1632 OAKWOOD ROAD
HOMWOOD, AL 35209
205-322-6704
ATTN: BERKLEY SQUIRES

ARCHITECT
DAVIS ARCHITECTS, INC.
126 23RD STREET SOUTH
BRIMMINGHAM, AL 35233
205-322-7482
ATTN: JIM HARTSELL

LANDSCAPE ARCHITECT
HNP
1914 28TH AVE. S.
BRIMMINGHAM, AL 35209
205-324-4447
ATTN: TOMMY HOLCOMBE / ED NORTON

CONSTRUCTION MANAGER
BL HARRERT
820 SHADES CREEK PARKWAY, SUITE 3000
BRIMMINGHAM, AL 35209
205-892-2900
ATTN: JOHN HANSON

STRUCTURAL ENGINEER
LEYD INC.
716 SOUTH 30TH STREET
BRIMMINGHAM, AL 35233
205-251-4500
ATTN: WIM BISHOP / BRAD CHRISTOPHER

MECHANICAL ENGINEER
WHITAKER & RAWSON
3322 OLD MONTGOMERY HIGHWAY
SUITE 101
BRIMMINGHAM, AL 35209
205-870-8901
ATTN: DAN WHITAKER, ERIC HARTWIG, AND MARK D'ANDREA

CIVIL ENGINEER
LEYD INC.
716 SOUTH 30TH STREET
BRIMMINGHAM, AL 35233
205-251-4500
ATTN: CURTIS EATMAN AND BRAIN HATCHER

ELECTRICAL ENGINEER
FISHER ARNOLD
1507 ALEX DR.
SUITE 101
BRIMMINGHAM, AL 35210
205-833-7033
ATTN: JOSEPH KUMU AND NICHOLAS BROWN

PLUMBING / FIRE PROTECTION ENGINEER
EDMONDS ENGINEERING
2 RIVERCHASE OFFICE PLAZA
SUITE 206
BRIMMINGHAM, AL 35244
205-988-2069
ATTN: CAROL JOHNSON

POOL CONSULTANT
COUNSILMAN HUNSAKE
10733 SUNSET OFFICE DRIVE
SUITE 400
ST. LOUIS, MO 63127
314.894.1245
ATTN: JEFF NODDRFT

REV	DATE	DESCRIPTION
001	OCTOBER 6, 2017	
PROJECT: 100% CONSTRUCTION DOCUMENTS		
DESIGNED BY: DAVIS ARCHITECTS		PROJECT NO: 3822
SHEET TITLE:		

PARTIAL FLOOR PLAN - ELECTRICAL CONNECTION TO MECHANICAL

E5.00

Order Plans @

WWW.LDILine.com