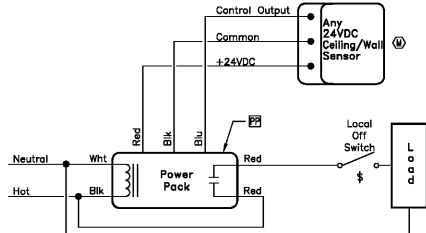
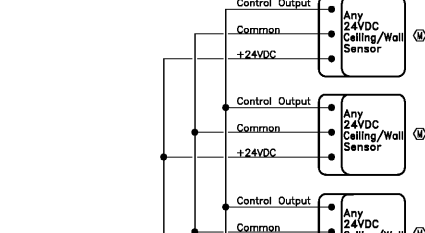


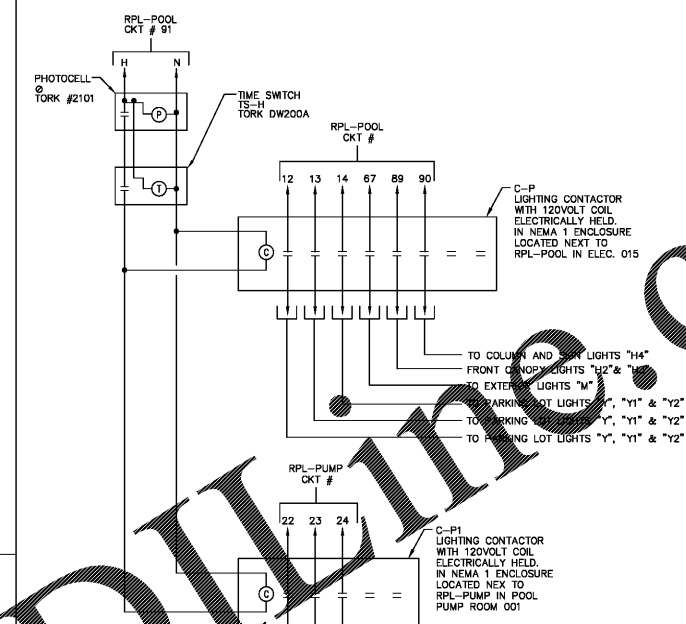
OCCUPANCY SENSOR WIRING DIAGRAM "OS"
NOT TO SCALE



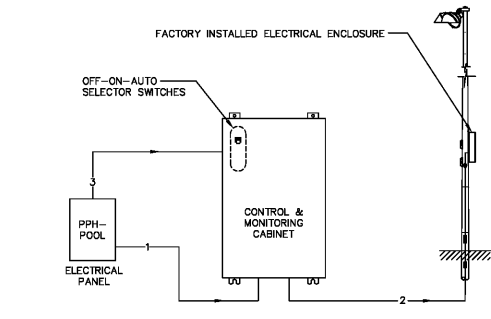
OCCUPANCY SENSOR WIRING DIAGRAM "A"
NOT TO SCALE



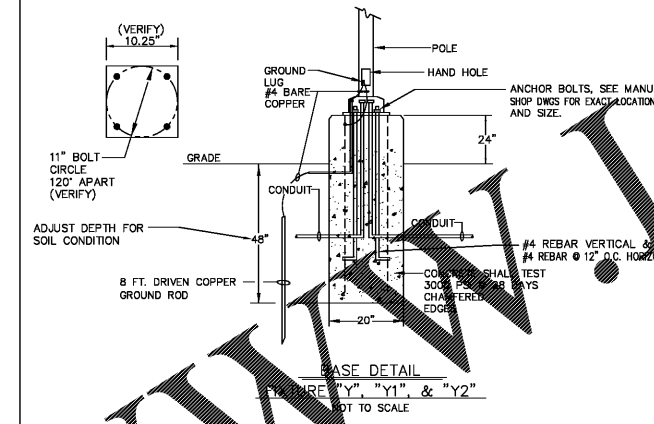
OCCUPANCY SENSOR WIRING DIAGRAM "B"
NOT TO SCALE



WIRING DIAGRAM
LIGHTING CONTACTORS C-P & P1
NOT TO SCALE



CONTROL AND MONITORING DIGITAL
TYPICAL EQUIPMENT LAYOUT
NOT TO SCALE



POLE FOUNDATION ELEV.
SCALE: NOT TO SCALE

WIRING DETAILS

WIRE	DESCRIPTION	VOLTAGE	# OF WIRES	TYP. SIZE	NOTES	SUPPLIER
1	POWER TO LIGHTING CONTACTORS (LINE)	NOTE A	NOTE B	NOTE B	A THRU E	CONTRACTOR
2	POWER FROM CONTACTORS TO POLES (LOAD)	NOTE A	NOTE B	NOTE B	A THRU E	CONTRACTOR
3	CONTROL VOLTAGE	120V(AC)	3	12	C,D,E	CONTRACTOR
4	CONTROL VOLTAGE HARNESS	120V(AC)	---	---	C,D,E	MUSCO
5	MONITORING MODULE COMMUNICATION CABLE	N/A	1	---	C,D,E	MUSCO

- NOTES:
- 277V, 1ø.
 - 1 CONDUCTOR PER PHASE + GROUND.
 - FOR MORE INFORMATION ON EQUIPMENT SEE DRAWINGS ON SHEET E2.0 & E4.0.
 - REFER TO INSTALLATION INSTRUCTIONS FOR DETAILS ON EQUIPMENT MOUNTING AND CONDUIT ENTRY POINTS.
 - POWER CIRCUITS (WIRE #1-4) MUST BE RUN IN SEPARATE CONDUITS FROM NON-POWER CIRCUITS (WIRE #5).

CIRCUIT SUMMARY BY ZONE

POLE	CIRCUIT NAME	NO. OF FIXTURES	NO. OF DRIVERS	FULL LOAD AMPS	CONTACTOR SIZE (AMPS)	CONTACTOR ID	ZONE
P1	POOL AREA	2	2	9	30	C1	1
P2	POOL AREA	2	2	9	30	C2	1
P3	POOL AREA	2	2	9	30	C3	1
P4	POOL AREA	2	2	9	30	C4	1
P5	POOL AREA	2	2	9	30	C5	1
P6	POOL AREA	2	2	9	30	C6	1

- GENERAL NOTES
- ENTRANCE HUB AND LOCKNUT MATERIALS MUST BE DIE-CAST ZINC, COPPER FREE DIE-CAST ALUMINUM OR PVC AND MUST MEET NEMA 4 ENCLOSURE SEALING REQUIREMENTS.
 - A SINGLE 120V CONTROL CIRCUIT MUST BE SUPPLIED TO EACH CONTROL SYSTEM.
 - SIZE OVERCURRENT DEVICES USING THE FULL LOAD AMPS COLUMN OF THE CHART. FULL LOAD AMPS BASED ON ASSUMED POWER FACTOR.

PANEL SUMMARY

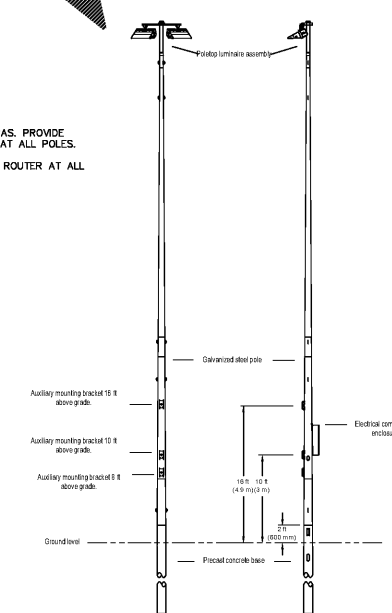
CABINET NO.	CONTROL MODULE LOCATION	CONT. ID	CIRCUIT DESCRIPTION	FULL LOAD AMPS	DISTRIBUTION PANEL ID	CIRCUIT BREAKER POSITION
1	1	C1	(CKT# 16)	10.4	PPH-POOL	ON
1	1	C2	(CKT# 17)	10.4	PPH-POOL	ON
1	1	C3	(CKT# 18)	10.4	PPH-POOL	ON
1	1	C4	(CKT# 19)	10.4	PPH-POOL	ON
1	1	C5	(CKT# 20)	10.4	PPH-POOL	ON
1	1	C6	(CKT# 21)	10.4	PPH-POOL	ON

SCHEMATIC

ZONE	RECTOR SW	ZONE DESCRIPTION	POLE ID	CONT ID	CIRCUIT DESCRIPTION
1		SWIMMING POOL DECK	P1	C1	
			P2	C2	
			P3	C3	
			P4	C4	
			P5	C5	
			P6	C6	

CONTROL SYSTEM SUMMARY - POOL DECK
NOT TO SCALE

- GENERAL NOTES:
- POLES P3 & P4 ARE PROVIDED WITH CAMERAS. PROVIDE PROVISIONS FOR FUTURE WIRELESS ROUTER AT ALL POLES.
 - PROVIDE PROVISIONS FOR FUTURE WIRELESS ROUTER AT ALL POLES.



POLE CONFIGURATION DETAIL
NOT TO SCALE

POLE FOUNDATION SCHEDULE

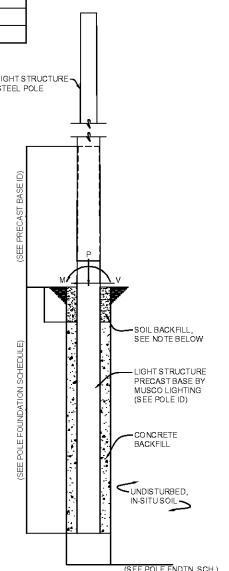
POLE DESIGNATION	FORCES			DRILLED PIER		
	MOMENT (M) FT-LBS	SHEAR (V) LBS	VERTICAL (P) LBS (1)	DIAMETER INCHES	EMBEDMENT DEPTH	CONCRETE BACKFILL TOP (2)
P1-P6	32,917	984	1,292	30	19'-0"	1.3
P2-P4	32,514	983	1,292	30	19'-0"	1.3
P5	32,519	949	1,292	30	19'-0"	1.3

- ASB LOAD COMBINATION D + W
- VERTICAL FORCE IS WEIGHT OF (DRESSED) POLE (DOES NOT INCLUDE PRECAST BASE WEIGHT).
- MINIMUM CONCRETE BACKFILL VOLUME, SITE CONDITIONS MAY REQUIRE ADDITIONAL BACKFILL.

POLE IDENTIFICATION

POLE DESIGNATION	POLE TYPE	PRECAST BASE TYPE	FIXTURE CONFIGURATION (FIX PER XARM)	FIXTURE AND ACCESSORIES EPA (FT)
P1-P6	LSS40A	29	2 (2)	11.9
P2-P4	LSS40A	29	2 (2)	12.3
P5	LSS40A	29	2 (2)	11.7

- NOTES:
- EACH POLE UTILIZES A 4-BAR FITTER TO ACHIEVE ITS MOUNTING HEIGHT.
 - EACH POLE HAS 1 ATLAS SPEAKER AT 10'-0" AGL, INCLUDED IN EPA ABOVE.
 - P3 & P5 POLE HAS 1 CAMERA AT 10'-0" AGL, INCLUDED IN EPA ABOVE.



SPORTS LIGHTING POLE BASE DETAIL
NOT TO SCALE

LABAMA
REGISTERED PROFESSIONAL
ENGINEER
MUTUAL LICENSE
NO. 10000

HOMWOOD PATRIOT PARK POOL
HOMWOOD PARKS & RECREATION

HOMWOOD PARKS AND RECREATION:
HOMWOOD, AL

DAVIS ARCHITECTS

OWNER
HOMWOOD PARKS AND RECREATION
1632 OAKMOOR ROAD
HOMWOOD, AL 35209
205-322-6704
ATTN: JIM HARTSELL SQUIRES

ARCHITECT
DAVIS ARCHITECTS, INC.
125 23RD STREET SOUTH
BIRMINGHAM, AL 35233
205-322-7482
ATTN: JIM HARTSELL

LANDSCAPE ARCHITECT
HNP
1914 26TH AVE S
BIRMINGHAM, AL 35209
205-324-4147
ATTN: TOMMY HOLCOMBE / ED NORTON

CONSTRUCTION MANAGER
EL HARBERT
820 SHADES CREEK PARKWAY, SUITE 3000
BIRMINGHAM, AL 35209
205-402-2800
ATTN: JOHN HANSON

STRUCTURAL ENGINEER
LEYD INC.
716 SOUTH 30TH STREET
BIRMINGHAM, AL 35233
205-251-4500
ATTN: WIM BISHOP / BRAD CHRISTOPHER

MECHANICAL ENGINEER
WHITAKER & RAWSON
3332 OLD MONTGOMERY HIGHWAY
SUITE 103
BIRMINGHAM, AL 35209
205-970-6801
ATTN: DAN WHITAKER, ERIK HARTWIG, AND MARK D'ANDREA

CIVIL ENGINEER
LEYD INC.
716 SOUTH 30TH STREET
BIRMINGHAM, AL 35233
205-251-4500
ATTN: CURTIS EATMAN AND BRAIN HATCHER

ELECTRICAL ENGINEER
FISHER ARNOLD
1507 ALEX DR.
SUITE 101
BIRMINGHAM, AL 35210
205-832-7033
ATTN: JOSEPH KUMU AND NICHOLAS BROWN

PLUMBING / FIRE PROTECTION ENGINEER
EDMONDS ENGINEERING
2 RIVERCHASE OFFICE PLAZA
SUITE 205
BIRMINGHAM, AL 35244
205-988-2069
ATTN: CAROL JOHNSON

POOL CONSULTANT
COUNSLMAN HUNSAKE
10733 SUNSET OFFICE DRIVE
SUITE 400
ST. LOUIS, MO 63127
314-894-1245
ATTN: JEFF NODORFT

REV DATE DESCRIPTION

DATE: OCTOBER 6, 2017

PROJECT: 100% CONSTRUCTION DOCUMENTS

DRAWING NO.: 3822

PROJECT NO.: 3822

SHEET TITLE: DETAILS

DRAWING NO.: E0.07

FISHER ARNOLD
1507 Alex Drive, Suite 101 | Birmingham, AL 35202
205.832.7033 | Fax: 205.974.0790 | farnold.com