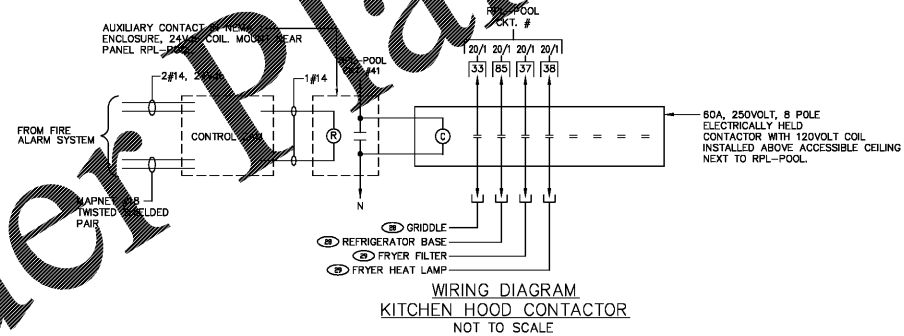


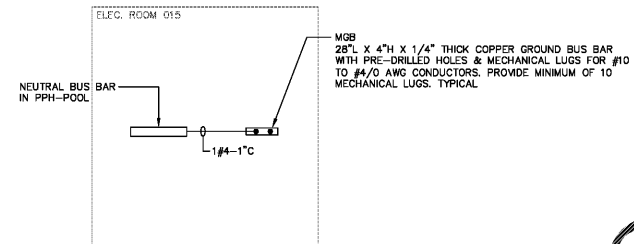
DETAIL
SWIMMING POOL GROUNDING
NOT TO SCALE

GENERAL NOTES:

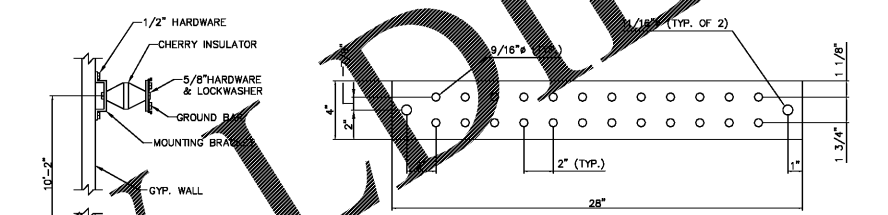
- CONTRACTOR SHALL BOND TOGETHER THE POOL SHELL STRUCTURAL REINFORCING STEEL, POOL DECK STRUCTURAL REINFORCING STEEL, ALL METALLIC PARTS OF THE POOL STRUCTURE, ALL METAL FITTINGS WITHIN OR ATTACHED TO THE POOL STRUCTURE, METAL PARTS OF ELECTRICAL EQUIPMENT ASSOCIATED WITH THE POOL WATER CIRCULATING SYSTEM, METAL PIPING, CONDUIT, LIGHT FIXTURES, LADDER, HANDRAILS, ETC. PER NEC 2014 680.26.
- POOL DECK STRUCTURAL REINFORCING STEEL SHALL BE ATTACHED TO THE POOL REINFORCING STEEL AT A MINIMUM FOUR POINTS UNIFORMLY SPACED AROUND THE PERIMETER OF THE POOL.
- ALL CONNECTIONS TO BONDED PARTS SHALL BE MADE IN ACCORDANCE TO NEC 2014 250.8. CONNECTION DEVICES OR FITTINGS THAT DEPEND SOLELY ON SOLDER SHALL NOT BE USED.
- THE BONDING CONDUCTOR SHALL BE 8 AWG.
- GROUNDING SHALL BE PER ARTICLE 680.6 OF 2014 NEC. CONTRACTOR SHALL REVIEW ARTICLE 680 IN ITS ENTIRETY FOR COMPLIANCE.
- IF STRUCTURAL REINFORCING STEEL IS ENCAPSULATED, PROVIDE COPPER CONDUCTOR GRID.
- EXTEND PERIMETER SURFACE PER ARTICLE 680.26(B)(2).
- SEE POOL EQUIPMENT VENDOR GROUNDING REQUIREMENTS FOR ADDITIONAL DETAILS.



WIRING DIAGRAM
KITCHEN HOOD CONTACTOR
NOT TO SCALE

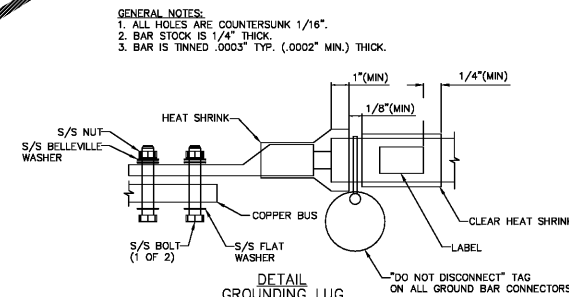


SINGLE LINE DIAGRAM
EQUIPMENT GROUND
NOT TO SCALE



GENERAL NOTES:

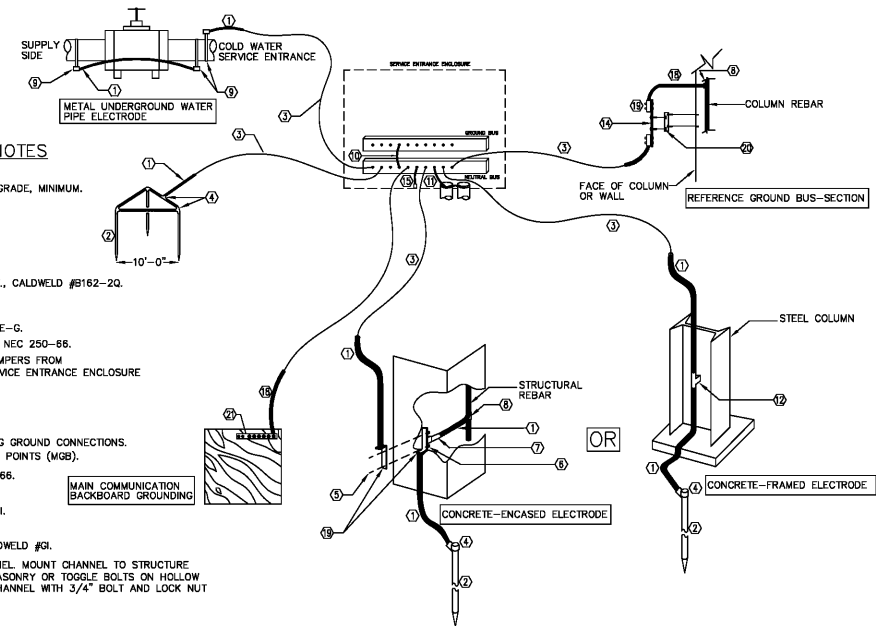
- ALL HARDWARE SHALL BE STAINLESS STEEL INCLUDING BELLEVILLE. COAT ALL SURFACES WITH KOPR-SHIELD BEFORE MATING.
- GROUND BOND TO STEEL ONLY: INSERT A DRAGON TOOTH WASHER BETWEEN LUG AND STEEL. COAT ALL SURFACES WITH KOPR-SHIELD.



DETAIL
MGB
NOT TO SCALE

GROUNDING SYSTEM DETAIL - KEY NOTES

- 1/0 BARE GROUNDING ELECTRODE CONDUCTOR.
- 3/4"x10'-0" GLAD STEEL GROUND ROD, DRIVEN 24" BELOW GRADE, MINIMUM.
- 1/0 BARE GROUNDING ELECTRODE CONDUCTOR IN 2" PVC-40.
- EXOTHERMIC WELD CONNECTOR: TWO CABLES TO GROUND ROD, CADWELD #GT OR #GY; CABLE TO CABLE TEE, CADWELD #TA; ONE CABLE TO GROUND ROD, CADWELD #GR.
- SILICON BRONZE BOLT & WASHER.
- TWO HOLE GROUND PLATE WITH 4/0 STUD, MOUNTED 6"A.F.F., CADWELD #B162-20.
- EXOTHERMIC WELD, CABLE TO STUD, CADWELD #SS.
- EXOTHERMIC WELD, CABLE TO STUD, CADWELD #RR.
- CAST BRONZE, UL LISTED GROUND CLAMP, O-Z/GEDNEY TYPE-G.
- BONDING JUMPER, SIZED BY EQUIPMENT MANUFACTURER PER NEC 250-66.
- BONDING JUMPER TO GROUNDING BUSHING, AND BONDING JUMPERS FROM CONDUIT TO CONDUIT, ALL CONDUIT CONNECTED TO THE SERVICE ENTRANCE ENCLOSURE SHALL BE BONDED, SIZED PER NEC 250.
- EXOTHERMIC WELD, CABLE TO FLAT STEEL, CADWELD # V V.
- LIGHTING PROTECTION COPPER DOWN CONDUCTOR.
- 1/4"x4"x28" COPPER BUS. DRILL AND TAP BUS FOR BUILDING GROUND CONNECTIONS. SEPARATELY DERIVED SERVICES AND BACKBOARD GROUNDING POINTS (MGB).
- MAIN BONDING JUMPER, SIZED BY MANUFACTURER PER 250-66.
- 1/0 BONDING JUMPER IN 2" PVC-40.
- EXOTHERMIC WELD, PARALLEL CABLE TO CABLE, CADWELD #PL.
- 1/0 BARE BONDING JUMPER.
- EXOTHERMIC WELD, CABLE TO TWO HOLE LUG ASSEMBLY, CADWELD #GR.
- TWO 1-1/2"x1-1/2"x6" HIGH SLOTTED GALVANIZED C-CHANNEL MOUNT CHANNEL TO STRUCTURE WITH MACHINE BOLTS AND CONCRETE ANCHORS ON SOLID MASONRY OR TOGGLE BOLTS ON HOLLOW MASONRY OR GYPSUM BOARD. MOUNT COPPER BUS TO C-CHANNEL WITH 3/4" BOLT AND LOCK NUT ASSEMBLY.



GROUNDING SYSTEM DETAIL
NOT TO SCALE



HOMWOOD PATRIOT PARK
POOL

HOMWOOD PARKS AND
RECREATION;
HOMWOOD, AL

DAVIS ARCHITECTS

OWNER
HOMWOOD PARKS AND RECREATION
1632 OAKMOOR ROAD
HOMWOOD, AL 35209
205-322-6704
ATTN: BERKLEY SQUIRES

ARCHITECT
DAVIS ARCHITECTS, INC.
120 23RD STREET SOUTH
BIRMINGHAM, AL 35233
205-322-7482
ATTN: JIM HARTSELL

LANDSCAPE ARCHITECT
HNP
1914 28TH AVE S.
BIRMINGHAM, AL 35209
205-324-4447
ATTN: TOMMY HOLCOMBE / ED NORTON

CONSTRUCTION MANAGER
BL HARBERT
820 SHADES CREEK PARKWAY, SUITE 3000
BIRMINGHAM, AL 35209
205-902-2800
ATTN: JOHN HANSON

STRUCTURAL ENGINEER
LEYD INC.
716 SOUTH 30TH STREET
BIRMINGHAM, AL 35233
205-251-4500
ATTN: WIM BISHOP / BRAD CHRISTOPHER

MECHANICAL ENGINEER
WHITAKER & RAWSON
3332 OLD MONTGOMERY HIGHWAY
SUITE 103
BIRMINGHAM, AL 35209
205-870-6801
ATTN: DAN WHITAKER, ERIK HARTWIG, AND MARK D'ANDREA

CIVIL ENGINEER
LEYD INC.
716 SOUTH 30TH STREET
BIRMINGHAM, AL 35233
205-251-4500
ATTN: CURTIS EATMAN AND BRAIN HATCHER

ELECTRICAL ENGINEER
FISHER ARNOLD
1507 ALEX DR.
SUITE 101
BIRMINGHAM, AL 35210
205-833-7033
ATTN: JOSEPH KUMU AND NICHOLAS BROWN

PLUMBING / FIRE PROTECTION ENGINEER
EDMONDS ENGINEERING
2 RIVERCHASE OFFICE PLAZA
SUITE 205
BIRMINGHAM, AL 35244
205-988-2069
ATTN: CAROL JOHNSON

POOL CONSULTANT
COUNSILMAN HUNSAKE
10733 SUNSET OFFICE DRIVE
SUITE 400
ST. LOUIS, MO 63127
314-894-1245
ATTN: JEFF NODORFT

REV	DATE	DESCRIPTION

DATE: OCTOBER 6, 2017

PROJECT: 100% CONSTRUCTION DOCUMENTS

DRAWING NO.: DAVIS ARCHITECTS PROJECT NO.: 3822

SHEET TITLE: DETAILS

DRAWING NO.:

E0.03

