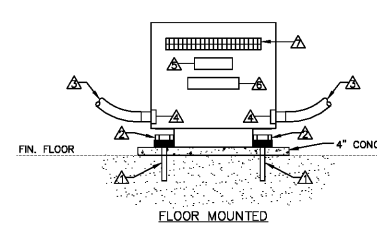
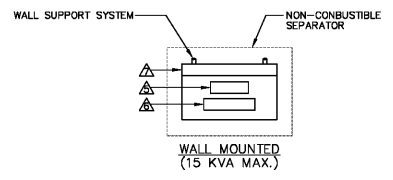
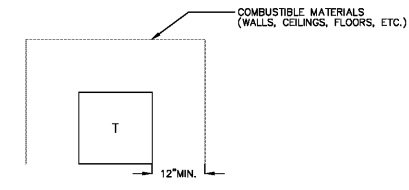


DETAIL - TYPICAL DRY-TYPE TRANSFORMER CONNECTIONS (THREE-PHASE)
NOT TO SCALE



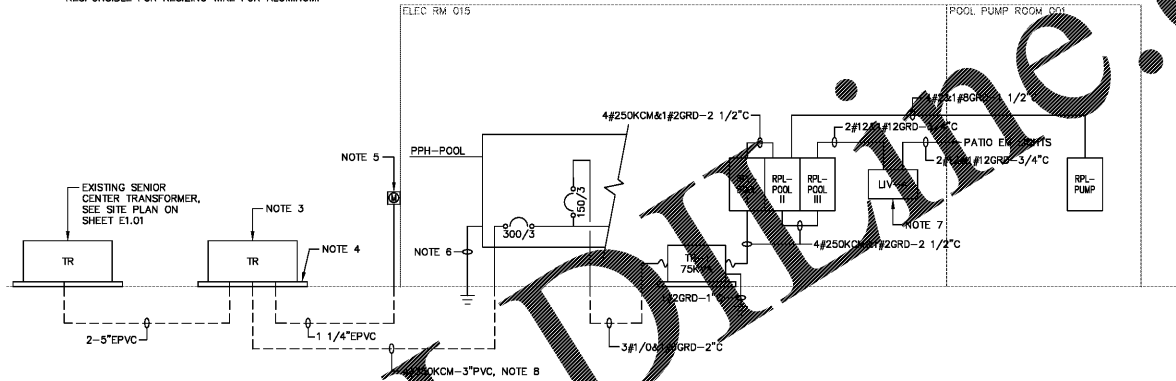
DETAIL - TYPICAL INDOOR INSTALLATION OF DRY-TYPE TRANSFORMERS
NOT TO SCALE

- KEYED NOTES**
- ▲ PRIMARY CONDUIT SYSTEM
 - ▲ SECONDARY CONDUIT SYSTEM
 - ▲ GROUNDING BUSHING
- DRY-TYPE TRANSFORMER NOTES:**
1. DRY-TYPE TRANSFORMERS SHALL CONSIST OF BUT NOT BE LIMITED TO THE FOLLOWING:
 - a. VENTILATED ENCLOSURE
 - b. PRIMARY SECTION
 - c. SECONDARY SECTION
 2. INSTALLATION SHALL COMPLY WITH THE REQUIREMENTS OF THE NATIONAL ELECTRICAL CODE (NEC) AND THE NATIONAL ELECTRICAL SAFETY CODE (NESC).
 3. ALL CONDUCTIVE PARTS OF EQUIPMENT, ENCLOSURES, FRAMES, ETC., SHALL BE GROUNDING.
 4. ALL CLEARANCES SHALL BE MAINTAINED PER NESC AND NEC. ALL PARTS, DEVICES, EQUIPMENT, ETC. WHICH REQUIRE MAINTENANCE, ADJUSTMENT, OPERATION OR EXAMINATION DURING NORMAL NETWORK OPERATION SHALL BE ARRANGED SO AS TO BE ACCESSIBLE BY THE PROVISION OF ADEQUATE WORKING SPACES, WORKING FACILITIES AND CLEARANCES. UNLESS NOTED OTHERWISE ALL CLEARANCES ARE MEASURED FROM SURFACE TO SURFACE.
 5. ALL DIMENSIONS INDICATED IN THESE DOCUMENTS ARE FOR REFERENCE AND COORDINATION PURPOSES ONLY. THE CONTRACTOR IS RESPONSIBLE FOR VERIFYING ALL DIMENSIONS IN THE FIELD.
 6. TRANSFORMERS SHALL BE INSTALLED IN ACCORDANCE WITH THE MANUFACTURER'S INSTRUCTIONS AND APPLICABLE DETAILS, ACCESSIBLE WITH MECHANICAL PROTECTION, VENTILATED ENCLOSURES AND WITHIN A SPACE TO PROVIDE VENTILATION TO DISPOSE OF THE TRANSFORMER FULL LOAD LOSSES. EACH TRANSFORMER SHALL CONTAIN A NAMEPLATE IN ACCORDANCE WITH NEC SECTION 450-8 AND THE CONTRACTOR SHALL INSURE THAT ALL SPECIAL PRECAUTIONS ARE MET SUCH AS PROPER CLEARANCES FOR VENTILATION, OVERCURRENT PROTECTION, ETC.
 7. TRANSFORMERS UTILIZED FOR NON-LINEAR LOADS SHALL BE UL LISTED FOR THAT PURPOSE AND "K" RATED WITH THE FOLLOWING FEATURES:
 - ▲ ELECTROSTATIC SHIELDING
 - ▲ DOUBLE SIZE NEUTRAL TERMINALS
 - ▲ ADDITIONAL COIL CAPACITY
 - ▲ REDUCED CORE FLUX
 - ▲ 115°C TEMPERATURE RISE

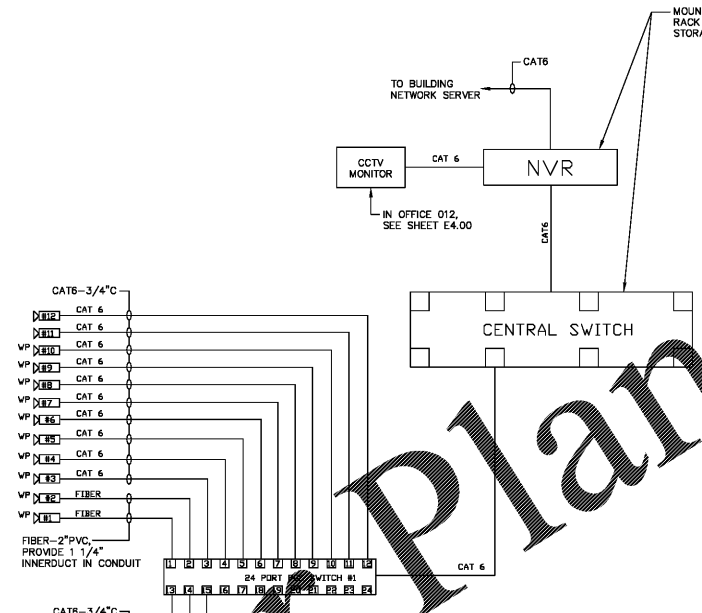


DETAIL - TYPICAL MINIMUM INSTALLATION CLEARANCE
NOT TO SCALE

- NOTES:**
1. NEW APCO RISER POLE, PROVIDED BY APCO. SEE SITE PLAN FOR LOCATION.
 2. STUB UP AS REQUIRED BY APCO.
 3. PAD MOUNTED TRANSFORMER BY APCO.
 4. CONCRETE PAD FOR APCO TRANSFORMER, SEE DETAIL ON SHEET E0.03.
 5. PROVIDE METER SOCKET FOR APCO METER. VERIFY TYPE.
 6. SEE MAIN SERVICE GROUNDING DETAIL ON SHEET E0.03.
 7. 250W, 120V MINI EMERGENCY INVERTER, EMERGI-LITE CATALOG #EM1U-250-D1 OR APPROVED EQUAL.
 8. ALUMINUM WIRE IS ALLOWED FOR SECONDARY SERVICE ENTRANCE CONDUCTORS. ELECTRICAL CONTRACTOR SHALL BE RESPONSIBLE FOR RESIZING WIRE FOR ALUMINUM.



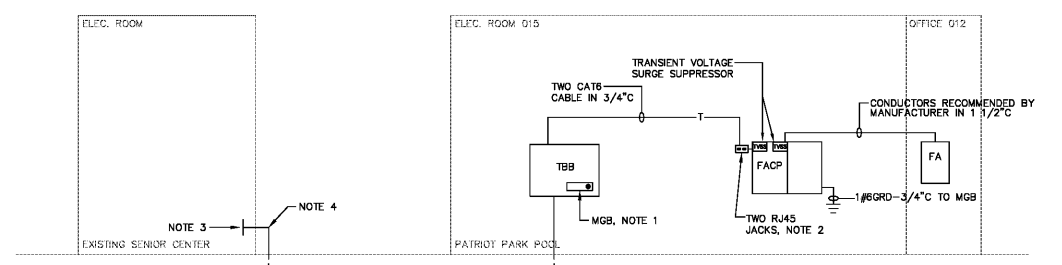
SINGLE LINE DIAGRAM
POWER
NOT TO SCALE



- NOTES:**
1. ALL CAT6 & FIBER INSTALLED IN CONDUIT UNDERGROUND AND/OR SLAB SHALL BE RATED FOR OUTDOOR INSTALLATION. NO EXCEPTION.
 2. PROVIDE ONE 19" COLOR MONITOR IN OFFICE 012 FOR CCTV.

WIRE	MANU. PART NO.	INSTALL
CAT 6	MOHAWK MS 81	CONDUIT
FIBER	MOHAWK 98199	CONDUIT
SWITCH	24 PORT MAX 8 & 24	N/A
NVR	10MINIS / SEE SPEC	N/A

SINGLE LINE DIAGRAM
VIDEO SURVEILLANCE
NOT TO SCALE



SINGLE LINE DIAGRAM
AUXILIARY
NOT TO SCALE

- NOTES:**
1. SEE DETAIL ON SHEET E0.03.
 2. TWO DEDICATED TELEPHONE LINES.
 3. COORDINATE FIBER AND CONDUIT TERMINATION IN EXISTING SENIOR CENTER WITH CITY OF HOMEWOOD BEFORE ROUGH IN.
 4. LONG SWEEP ELBOW.



HOMWOOD PATRIOT PARK POOL
HOMWOOD PARKS & RECREATION

HOMWOOD PARKS AND RECREATION
HOMWOOD, AL

DAVIS ARCHITECTS

OWNER
HOMWOOD PARKS AND RECREATION
1632 OAKWOOD ROAD
HOMWOOD, AL 35209
205-322-6704
ATTN: BERKLEY SQUIRES

ARCHITECT
DAVIS ARCHITECTS, INC.
120 23RD STREET SOUTH
BIRMINGHAM, AL 35233
205-322-7482
ATTN: JIM HARTSELL

LANDSCAPE ARCHITECT
HNP
1914 28TH AVE S.
BIRMINGHAM, AL 35209
205-324-4447
ATTN: TOMMY HOLCOMBE / ED NORTON

CONSTRUCTION MANAGER
BL HARBERT
820 SHADES CREEK PARKWAY, SUITE 3000
BIRMINGHAM, AL 35209
205-902-2000
ATTN: JOHN HANSON

STRUCTURAL ENGINEER
LEYD INC.
716 SOUTH 30TH STREET
BIRMINGHAM, AL 35233
205-251-4500
ATTN: WIM BISHOP / BRAD CHRISTOPHER

MECHANICAL ENGINEER
WHITAKER & RAWSON
3332 OLD MONTGOMERY HIGHWAY
SUITE 103
BIRMINGHAM, AL 35209
205-870-6801
ATTN: DAN WHITAKER, ERIK HARTWIG, AND MARK D'ANDREA

CIVIL ENGINEER
LEYD INC.
716 SOUTH 30TH STREET
BIRMINGHAM, AL 35233
205-251-4500
ATTN: CURTIS EATMAN AND BRAIN HATCHER

ELECTRICAL ENGINEER
FISHER ARNOLD
1507 ALEX DR.
SUITE 101
BIRMINGHAM, AL 35210
205-833-7033
ATTN: JOSEPH KUMU AND NICHOLAS BROWN

PLUMBING / FIRE PROTECTION ENGINEER
EDMONDS ENGINEERING
2 RIVERCHASE OFFICE PLAZA
SUITE 205
BIRMINGHAM, AL 35244
205-988-2069
ATTN: CAROL JOHNSON

POOL CONSULTANT
COUNSILMAN HUNSAKE
10733 SUNSET OFFICE DRIVE
SUITE 400
ST. LOUIS, MO 63127
314-894-1245
ATTN: JEFF NODORFT

REV	DATE	DESCRIPTION

DATE: OCTOBER 6, 2017

PROJECT: 100% CONSTRUCTION DOCUMENTS

DRAWING NO.: 3822

SHEET TITLE: SINGLE LINE DIAGRAMS



E0.02