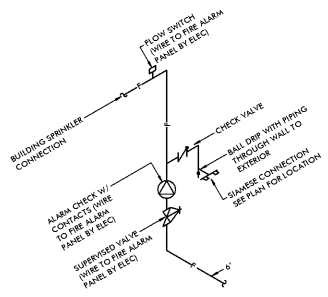
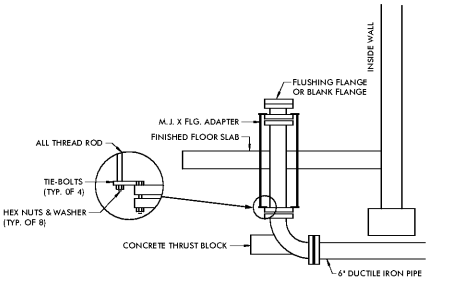


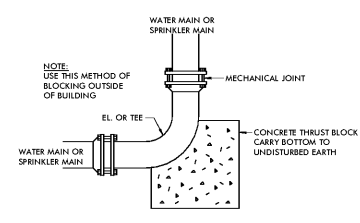
**DETAIL OF SPRINKLER HEAD**  
NO SCALE



**DETAIL OF FIRE SERVICE ENTRY**  
NO SCALE



**DETAIL OF FIRE SERVICE ENTRY**  
NO SCALE



**CONCRETE THRUST BLOCK AT ALL CHANGES OF WATER MAINS DETAILS**  
NO SCALE

FIRE PROTECTION LEGEND			
—	FIRE LINE - MAIN	A.F.F.	ABOVE FINISH FLOOR
—	OSBY GATE VALVE	EX.	EXISTING
—	UNION	F.F.E.	FINISH FLOOR ELEVATION
—	PIPE TURNING UP	F.V.C.	FIRE VALVE CABINET
—	PIPE TURNING DOWN	F.D.V.	FIRE DEPARTMENT VALVE
—	CHECK VALVE	SV&S	SUPERVISED VALVE & FLOW SWITCH
—	RISER CHECK		

**WET SPRINKLER SYSTEM NOTES**

- WET SPRINKLER SYSTEM DESIGN AND INSTALLATION. BASE SYSTEM DESIGN HYDRAULIC CALCULATIONS USING THE AREA-DENSITY METHOD ON THE FOLLOWING CRITERIA AND IN ACCORDANCE WITH NFPA 13 LATEST EDITION.
  - ALL OFFICE, WAITING AREAS, LOCKER ROOMS, DINING AREAS AND CORRIDORS: LIGHT HAZARD, 0.10 GPM/SG. FT. OVER THE HYDRAULICALLY MOST REMOTE 1500 SQ. FT.
  - KITCHEN, MECHANICAL EQUIPMENT ROOMS, RESTROOMS, ELECTRICAL SWITCHGEAR ROOMS, ELECTRICAL CLOSET AND STORAGE AREAS: MODERATE HAZARD, 0.20 GPM/SG. FT. OVER THE HYDRAULICALLY MOST REMOTE 1500 SQ. FT.
  - POOL PLUMB ROOM, LAUNDRY ROOMS, JANITRY: MODERATE HAZARD, 0.20 GPM/SG. FT. OVER THE HYDRAULICALLY MOST REMOTE 1500 SQ. FT.
  - NO WATER ALLOWANCE TO BE USED FOR IN-ROOM OUTLET COSE STREAMS TO THE SPRINKLER ELEMENTS OR CONTINGENT DISTRIBUTION MAIN.
- HYDRAULIC CALCULATIONS: THE CALCULATED DEMAND INCLUDING THE HOSE STREAM REQUIREMENTS SHALL FALL NOT MORE THAN 10 PERCENT BELOW THE AVAILABLE SUPPLY CAPACITY.
- COMPLY WITH NFPA 13 (2007 EDITION), NFPA 99 (2009 EDITION), NFPA 30, FLAMMABLE LIQUID CODE, NFPA 31, LIQUID PETROLEUM GASES, NFPA 54, NATIONAL FUEL GAS CODE, NFPA 70, NATIONAL ELECTRICAL CODE, NFPA 72, NATIONAL ALARM AND SIGNALING CODE AND NFPA 77, LIFE SAFETY CODE (2007 EDITION).

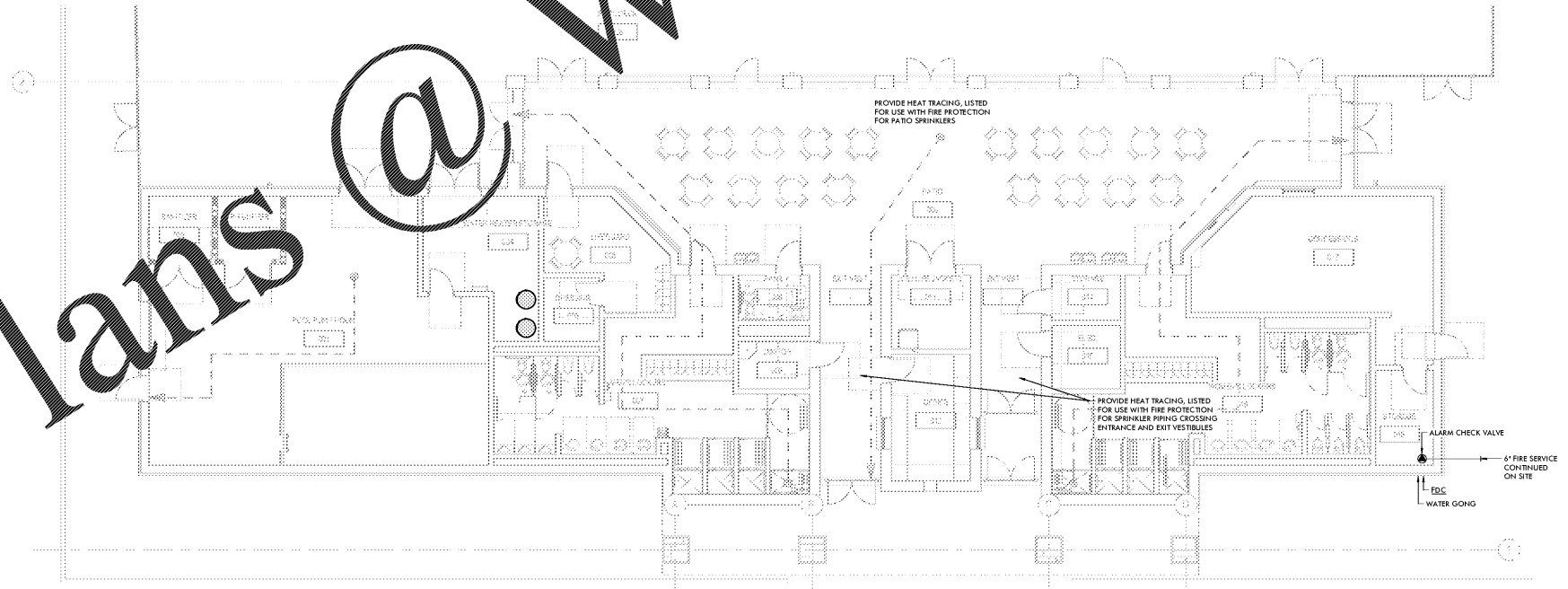
**SPRINKLER NOTES**

- PROVIDE A NFPA 13 COMPLIANT SYSTEM TO PROVIDE TOTAL COVERAGE FOR THE ENTIRE BUILDING.
- ALL PIPING 1-1/2" AND SMALLER SHALL BE SCHEDULE 40 STEEL WITH THREADED JOINTS AND CAST IRON OR MALLEABLE IRON FITTINGS. PROVIDE HANGERS PER NFPA 13 SPACING.
- PIPING 2" AND LARGER MAY BE SCHEDULE 10 PIPE WITH ROLL GROVED JOINTS. HANGER SPACING TO BE PER NFPA 13 REQUIREMENTS.
- SPRINKLER HEADS SHALL BE QUICK RESPONSE, GLASS BULB EQUAL TO SPRINKLER MODELS. INSTALL SPRINKLER HEADS IN CENTER OF CEILING TILE IF POSSIBLE.
- PIPING IS TO BE INSTALLED IN A MANNER AS TO HIDE AS MUCH AS POSSIBLE.

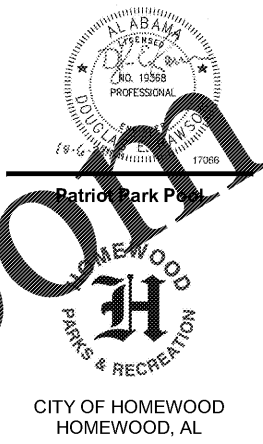
**FP SHOP DRAWING NOTES**

BEFORE SUBMITTING FIRE PROTECTION SHOP DRAWINGS FOR REVIEW

- CONFIRM THAT FIRE PROTECTION SHOP DRAWINGS ARE SEALED AND SIGNED BY A PROFESSIONAL ENGINEER LICENSED IN THE STATE OF ALABAMA.
- CONFIRM THAT EACH NODE POINT IN THE HYDRAULIC CALCULATIONS APPEARS ON THE FIRE PROTECTION SHOP DRAWINGS AND THAT NOMENCLATURE MATCHES. THIS INCLUDES NODE POINTS ON SITE SUCH AS THE BACKFLOW PREVENTER AND SOURCE.
- CONFIRM THAT PIPE SIZES, LENGTHS AND ELEVATIONS NOTED IN HYDRAULIC CALCULATIONS MATCH THE PIPE SIZES, LENGTHS AND ELEVATIONS INDICATED ON THE FIRE PROTECTION SHOP DRAWINGS.
- CONFIRM THAT NODE POINTS, PIPE SIZES, LENGTHS AND ELEVATIONS DO NOT OVER LAP ARCHITECTURAL FEATURES OR OTHER GRAPHIC ELEMENTS SO THEY BECOME DIFFICULT TO READ WHEN PLOTTED.
- CONFIRM THAT WHEN MULTIPLE NODE POINTS ARE LOCATED IN CLOSE PROXIMITY TO ONE ANOTHER THAT LEADER LINES ARE USED TO IDENTIFY WHERE THE NODE POINT IS LOCATED IN THE DESIGN.
- CONFIRM THAT HYDRAULIC CALCULATIONS ACCURATELY ACCOUNT FOR PIPE ROUTING (ELBOWS, TEES, ELEVATION OFFSETS, ETC) INDICATED IN THE FIRE PROTECTION SHOP DRAWINGS.
- CONFIRM THAT REMOTE AREAS ARE OUTLINED AND IDENTIFIED ON FIRE PROTECTION SHOP DRAWINGS AND THAT NOMENCLATURE MATCHES HYDRAULIC CALCULATIONS.



**FIRST FLOOR PLAN - FIRE PROTECTION**  
SCALE: 1/8" = 1'-0"



**DAVIS ARCHITECTS**

OWNER  
HOMWOOD PARKS AND RECREATION  
1632 OXMOOR ROAD  
HOMWOOD, AL 35209  
ATTN: BENELEY SQUIRES

ARCHITECT  
DAVIS ARCHITECTS, INC.  
120 23RD STREET SOUTH  
BIRMINGHAM, AL 35233  
ATTN: JIM HARTSELL

LANDSCAPE ARCHITECT  
HNP  
1914 20TH AVE S  
BIRMINGHAM, AL 35209  
ATTN: TOMMY HOLCOMBE / ED NORTON

CONSTRUCTION MANAGER  
BL HARBERT  
820 SHADES CREEK PARKWAY, SUITE 3000  
BIRMINGHAM, AL 35209  
ATTN: JOHN HANSON

STRUCTURAL ENGINEER  
LEYD INC.  
715 SOUTH 30TH STREET  
BIRMINGHAM, AL 35233  
ATTN: WIM BISHOP / BRAD CHRISTOPHER

MECHANICAL ENGINEER  
WHITAKER & RAWSON  
3332 OLD MONTGOMERY HIGHWAY  
SUITE 103  
BIRMINGHAM, AL 35209  
ATTN: MARK D'ANDREA AND DAN WHITAKER

CIVIL ENGINEER  
LEYD INC.  
715 SOUTH 30TH STREET  
BIRMINGHAM, AL 35233  
ATTN: CURTIS EATMAN AND BRIAN HATCHER

ELECTRICAL ENGINEER  
FISHER ARNOLD  
1507 ALEX DR.  
SUITE 101  
BIRMINGHAM, AL 35210  
ATTN: JOSEPH KUMU AND NICHOLAS BROWN

PLUMBING / FIRE PROTECTION ENGINEER  
WHITAKER & RAWSON  
3332 OLD MONTGOMERY HIGHWAY  
SUITE 103  
BIRMINGHAM, AL 35209  
ATTN: ERIK HARTWIG

POOL CONSULTANT  
COUNSLMAN HUNSAKE  
10733 SUNSET OFFICE DRIVE  
SUITE 400  
ST. LOUIS, MO 63127  
314-894-1246  
ATTN: JEFF NODORFT

REV	DATE	DESCRIPTION

DATE: OCTOBER 6, 2017  
PROJECT: 100% CONSTRUCTION DOCUMENTS  
SHEET NO: 3822  
PROJECT NO: 3822

**WR**  
WHITAKER & RAWSON, LLC  
3332 Old Montgomery Hwy  
Suite 103, Birmingham, AL 35209  
www.whitakerandrawson.com  
Birmingham, Alabama  
Direct Line: (205) 949-5128  
Plumbing: (205) 949-5128  
Direct Line: (205) 949-5107  
WAR PROJECT NUMBER: T1996

**FIRST FLOOR PLAN - FIRE PROTECTION**

**FP2.01**

Order Plans @ [www.LDILLIERS.com](http://www.LDILLIERS.com)