



**Patriot Park Pool**  
**HOMWOOD PARKS & RECREATION**  
 CITY OF HOMWOOD  
 HOMWOOD, AL

**DAVIS ARCHITECTS**

OWNER  
 HOMWOOD PARKS AND RECREATION  
 1632 OXMOOR ROAD  
 HOMWOOD, AL 35209  
 205-322-6704  
 ATTN: BENJELYN SQUIRES

ARCHITECT  
 DAVIS ARCHITECTS, INC.  
 120 23RD STREET SOUTH  
 BRIMMINGHAM, AL 35233  
 205-322-7482  
 ATTN: JIM HARTSELL

LANDSCAPE ARCHITECT  
 HNP  
 1914 20TH AVE S  
 BRIMMINGHAM, AL 35209  
 205-324-4447  
 ATTN: TOMMY HOLCOMBE / ED NORTON

CONSTRUCTION MANAGER  
 BL HARBERT  
 620 SHADES CREEK PARKWAY, SUITE 3000  
 BRIMMINGHAM, AL 35209  
 205-992-2900  
 ATTN: JOHN HANSON

STRUCTURAL ENGINEER  
 LEYD INC.  
 716 SOUTH 30TH STREET  
 BRIMMINGHAM, AL 35233  
 205-251-4500  
 ATTN: VIK BISHOP / BRAD CHRISTOPHER

MECHANICAL ENGINEER  
 WHITAKER & RAWSON  
 3332 OLD MONTGOMERY HIGHWAY  
 SUITE 103  
 BRIMMINGHAM, AL 35209  
 205-949-5128  
 ATTN: MARK D'ANDREA AND DAN WHITAKER

CIVIL ENGINEER  
 LEYD INC.  
 716 SOUTH 30TH STREET  
 BRIMMINGHAM, AL 35233  
 205-251-4500  
 ATTN: CURTIS EATMAN AND BRIAN HATCHER

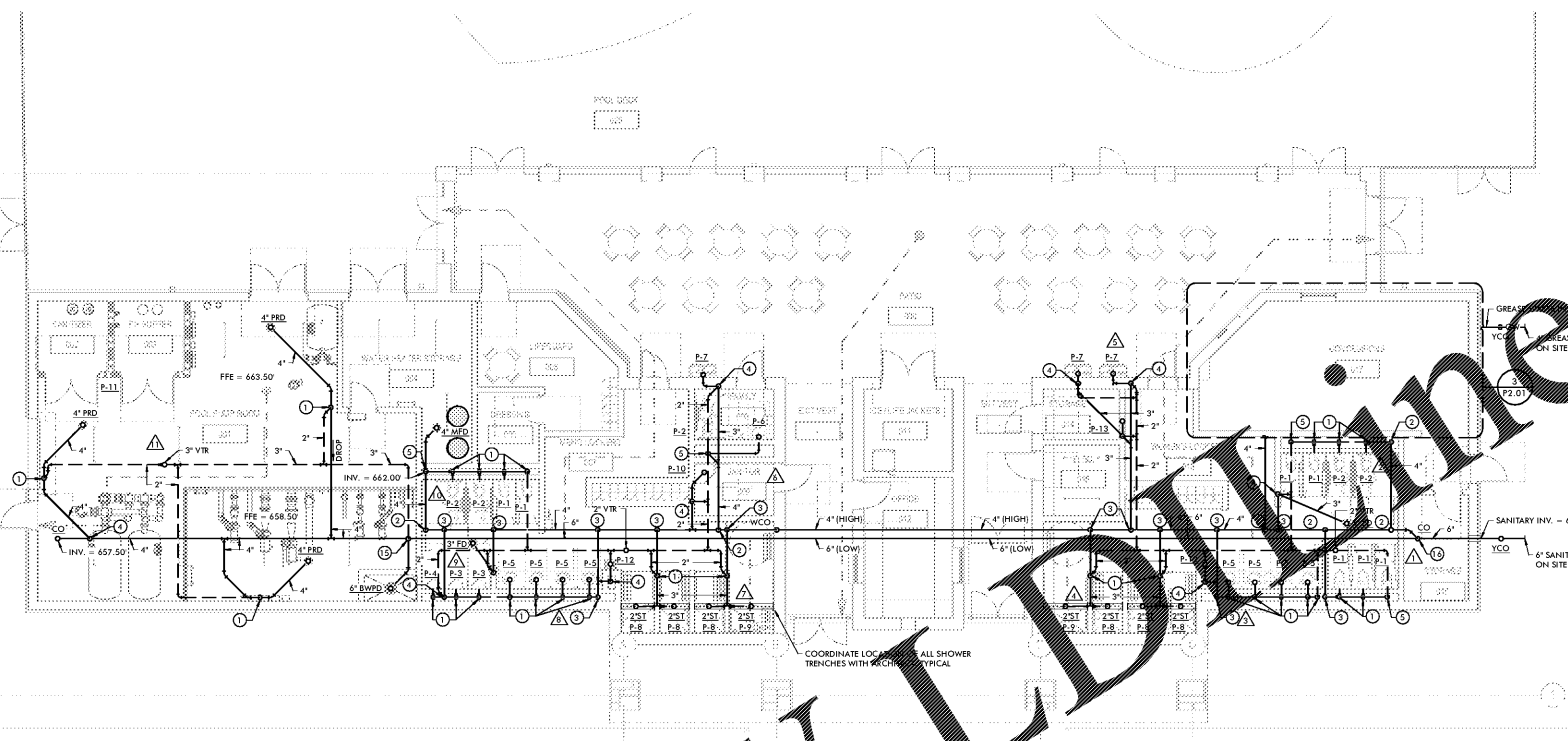
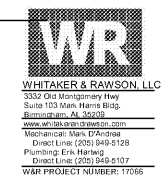
ELECTRICAL ENGINEER  
 FISHER ARNOLD  
 1507 ALEX DR.  
 SUITE 101  
 BRIMMINGHAM, AL 35210  
 205-933-7633  
 ATTN: JOSEPH KUMU AND NICHOLAS BROWN

PLUMBING / FIRE PROTECTION ENGINEER  
 WHITAKER & RAWSON  
 3332 OLD MONTGOMERY HIGHWAY  
 SUITE 103  
 BRIMMINGHAM, AL 35209  
 205-949-5107  
 ATTN: ERIC HARTWIG

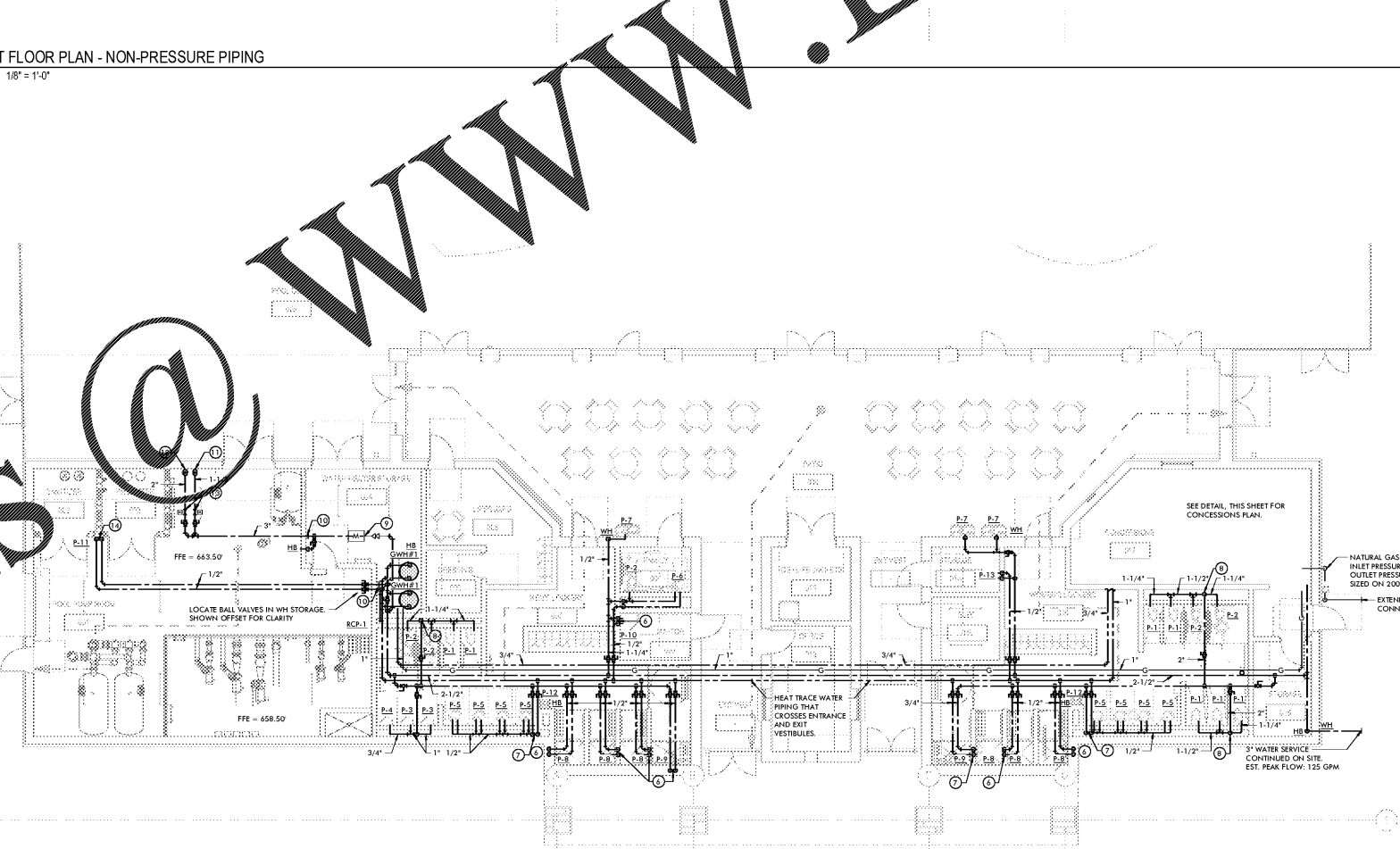
POOL CONSULTANT  
 COUNSLMAN HUNSAKE  
 10733 SUNSET OFFICE DRIVE  
 SUITE 400  
 ST. LOUIS, MO 63127  
 314-894-1246  
 ATTN: JEFF NODORFT

REV	DATE	DESCRIPTION

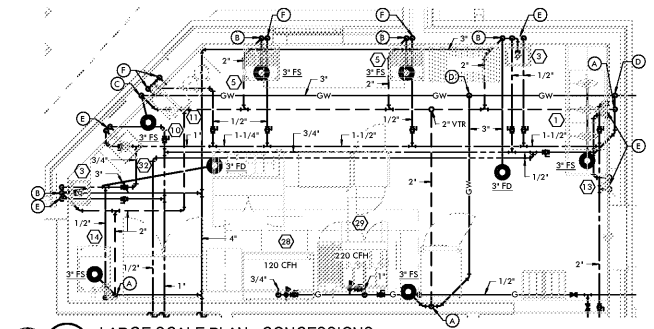
DATE: OCTOBER 6, 2017  
 PERCENT: 100% CONSTRUCTION DOCUMENTS  
 DRAWN BY: DAVIS ARCHITECTS  
 PROJECT NO.: 3822  
 SHEET TITLE: FIRST FLOOR PLAN - PLUMBING  
 DRAWING NO.: P2.01



**1**  
 P2.01  
**FIRST FLOOR PLAN - NON-PRESSURE PIPING**  
 SCALE: 1/8" = 1'-0"

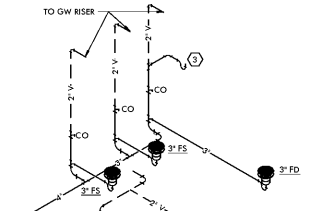


**2**  
 P2.01  
**FIRST FLOOR PLAN - PRESSURE PIPING**  
 SCALE: 1/8" = 1'-0"



**3**  
 P2.01  
**LARGE SCALE PLAN - CONCESSIONS**  
 SCALE: 1/4" = 1'-0"

- LARGE SCALE PLAN DRAWING NOTES**
- (A) 2" V RISE
  - (B) 3" SAN, 2" V RISE
  - (C) 3" GW, 2" V RISE
  - (D) 3" GW RISE
  - (E) 1/2" HSCW DN IN WALL
  - (F) 1/2" CW DN IN WALL



**4**  
 P2.01  
**CONCESSION RISERS - SAN/GW**  
 SCALE: 1/2" = 1'-0"

- DRAWING NOTES**
- 1 2" V RISE
  - 2 4" SAN RISE
  - 3 3" SAN RISE
  - 4 3" SAN, 2" V RISE
  - 5 4" SAN, 2" V RISE
  - 6 1/2" HSCW DN
  - 7 3/4" HSCW DN
  - 8 2" CW DN
  - 9 PROVIDE BACKFLOW PREVENTER, RPZ TYPE AND TOTALIZING WATER METER ON POOL MAKE UP PIPING.
  - 10 TRANSITION TO SCHEDULE 80 CPVC FOR PRESSURE PIPING LOCATED IN POOL PUMP ROOM.
  - 11 DROP 1-1/2" CW TO FILL FUNNEL. SECURE PIPING TO WALL. OFFSET PIPE TO FILL FUNNEL CENTERLINE AND TERMINATE WITH 3" AIR GAP. PROVIDE 45 DEGREE BEVEL AT PIPE END.
  - 12 DROP 2" CW TO FILL FUNNEL. SECURE PIPING TO WALL. OFFSET PIPE TO FILL FUNNEL CENTERLINE AND TERMINATE WITH 4" AIR GAP. PROVIDE 45 DEGREE BEVEL AT PIPE END.
  - 13 AUTOMATIC FILL VALVE FURNISHED BY POOL CONTRACTOR. INSTALLED BY THIS CONTRACTOR. COORDINATE POWER REQUIREMENTS.
  - 14 DROP 1/2" CW TO P-1.1 MIXING VALVE. FURNISH 3/4" TW PIPING BETWEEN MIXING VALVE AND P-1.1.
  - 15 3" V RISE
  - 16 DN SANITARY IN TOP OF 6" MAIN DRAIN.

Order Plans @ [www.LDOnline.com](http://www.LDOnline.com)