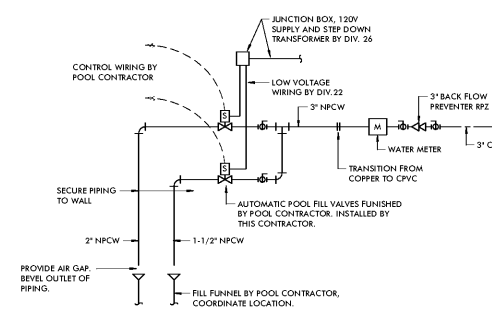
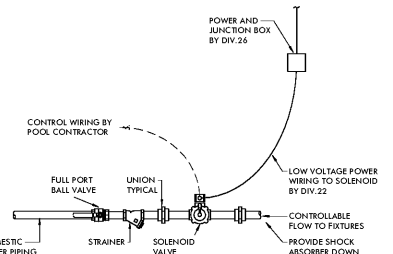


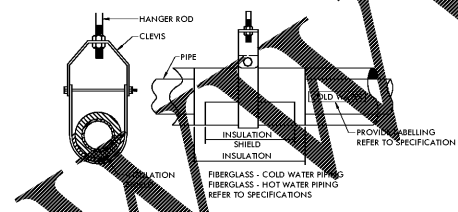
DETAIL OF PIPING AT GAS WATER HEATERS (GWH#1)
NO SCALE



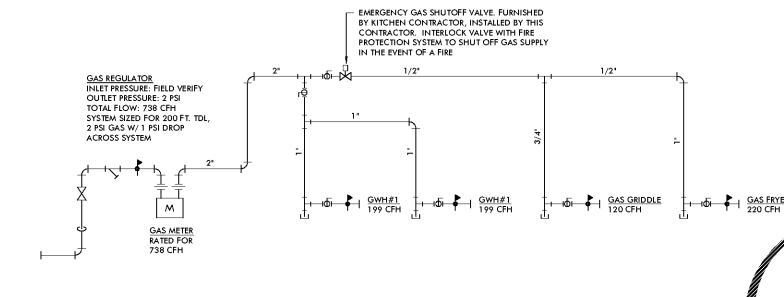
POOL FILL STATION DETAIL
NO SCALE



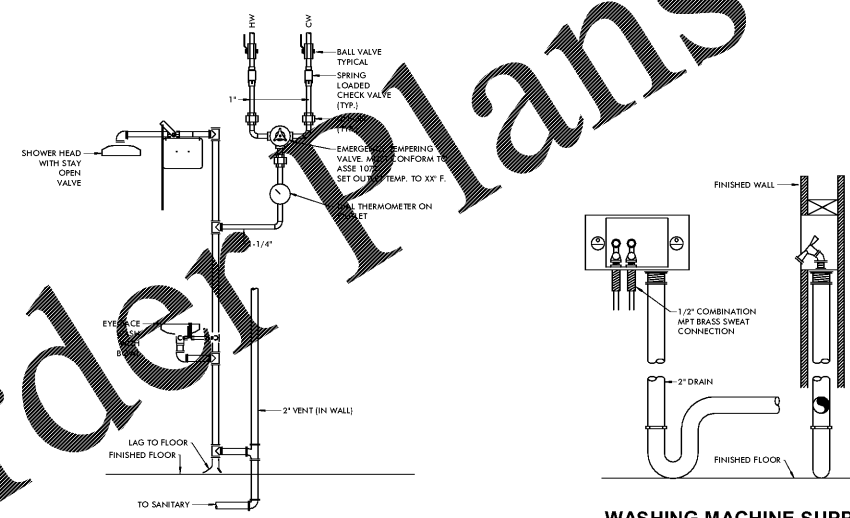
DETAIL OF SOLENOID VALVE PIPING
NO SCALE



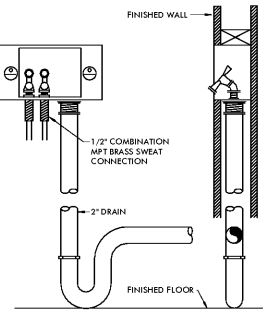
ADJUSTABLE CLEVIS HANGER DETAIL
NO SCALE



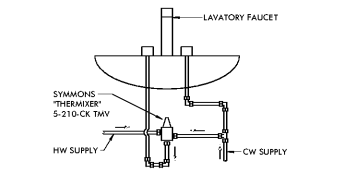
GAS SCHEMATIC
NO SCALE



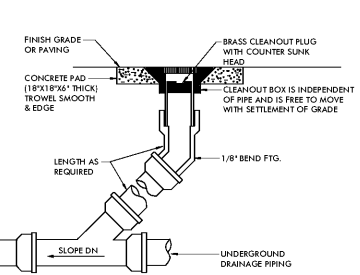
DETAIL OF EMERGENCY SHOWER/EYE WASH
NO SCALE



WASHING MACHINE SUPPLY & DRAIN UNIT DETAIL
NO SCALE



DETAIL OF PIPING AT THERMIXER UNDER LAVATORY
NO SCALE



DETAIL OF CLEANOUT TO GRADE
NO SCALE

GENERAL NOTES

- 1. ALL OUTSIDE CLEANOUTS SHALL BE BROUGHT TO GRADE AND EMBEDDED IN 18"X18"X6" THICK CONCRETE PAD (R SMITH 4228 OR EQUAL).
- 2. WHATEVER DISINTEGRATED METALS ARE CONNECTED ON WATER LINES, A DIELECTRIC NIPPLE SHALL BE USED.
- 3. ALL HORIZONTAL WATER, VENT, GAS AND FIRE PIPING IS RUN ABOVE CEILING ON PLAN WHICH SHOWN UNLESS OTHERWISE NOTED.
- 4. ALL WATER PIPING BELOW SLAB ON GRADE SHALL BE BENT UP AT EYES 20" THAT NO JOINTS OCCUR BELOW FLOOR.
- 5. COORDINATE ALL PIPE ROUTING TO AVOID CONFLICTS WITH STRUCTURAL, MECHANICAL, AND ELECTRICAL FEATURES OF BUILDING.
- 6. PLUMBING DRAWINGS ARE DIAGRAMMATIC AND DO NOT SHOW ALL DETAILS OF THE WORK. OBTAIN DIMENSIONS AND PERTINENT INFORMATION FROM ARCHITECTURAL DRAWINGS.
- 7. ALL WALL HYDRANTS SHALL BE MOUNTED 24" ABOVE FINISH GRADE OR FINISHED FLOOR UNLESS OTHERWISE NOTED.
- 8. INSTALL ALL OUTSIDE VALVES IN CONCRETE OR CAST IRON VALVE BOXES.
- 9. ALL HORIZONTAL STORM AND SANITARY PIPING IS RUN BELOW FLOOR ON PLAN WHICH SHOWN UNLESS OTHERWISE NOTED.
- 10. ALL WATER PIPING INSTALLED IN EXTERIOR WALLS SHALL BE LOCATED ON THE INTERIOR SIDE OF THE EXTERIOR WALL INSULATION.
- 11. PAVEMENT CUTS, BACKFILLING AND PATCHES SHALL MEET ALL LOCAL REQUIREMENTS.
- 12. INSTALL WATER PIPING TO ASME B31.9. PROVIDE 18" AIR CHAMBERS ON WATER SUPPLIES TO ALL FIXTURES. PSI SHOCK ARRESTORS ARE AN APPROVED ALTERNATE METHOD.
- 13. CONTRACTOR TO VERIFY EXACT LOCATION OF ALL MECHANICAL EQUIPMENT FROM TO ROUGHING MECHANICAL ROOM FLOOR DRAINS, TRAP PRIMERS, HOSE BIBBS, ETC.
- 14. ALL FLOOR SINKS/FLOOR DRAINS TO BE INSTALLED WITH RAW-GRADE FLUSH WITH FINISHED FLOOR.

FOOD SERVICE EQUIP. NOTES

- 1. ALL EQUIPMENT IS FURNISHED AND SET IN PLACE UNDER THE FOOD SERVICE SECTION.
- 2. ALL SINK, WASTE CUPBOARD, SINKS, LEVER WASTES AND TALLIEGES ARE FURNISHED UNDER FOOD SERVICE SECTION.
- 3. ALL FAUCETS ARE FURNISHED UNDER THE FOOD SERVICE SECTION.
- 4. UNDER THIS SECTION, ROUGH AND CONNECT IN ACCORDANCE WITH SHOP DRAWINGS AND COMPANYING THE EQUIPMENT. PROVIDE STOP ON COULDS AND FLOW PREVENTERS AS REQUIRED ON COULDS, MECHANICAL BEANS, BEVERAGE DISPENSERS, ETC. REFER TO PLUMBING CODE.
- 5. UNDER THIS SECTION EXTEND ALL WASTES TO FLOOR SINKS WITH 1/2" COPPER AND BEVELY ANCHORED IN THE CONCRETE. INSTALL FLOW CONTROL DEVICES ON SINK WASHERS AS SHOWN AND DETAILED ON DRAWINGS.
- 6. REFER TO FAUCETS, FURNISHED UNDER THE FOOD SERVICE SECTION. ROUGH, CONNECT AND FURNISH EBC LATE STOPS WITH SUPPLIES.
- 7. FURNISH EBC TA150 P-TRAPS WHERE SINK, ETC., IS NOT PIPED TO A FLOOR SINK.
- 8. PLUMBING CONTRACTOR TO INSTALL GAS, HOT AND COLD WATER FLEXIBLE CONNECTION FROM UDS TO COOKING EQUIPMENT.
- 9. PROVIDE SYMONS' THERMIXER 5-210-CK T/MY UNDER ALL HAND WASH SINKS. SET HOT WATER TEMPERATURE TO 109 DEG. F.

PLUMBING LEGEND

COLD WATER LINE	A.A.V.	AIR ADMITTANCE VALVE
HOT WATER LINE	A.F.F.	ABOVE FINISH FLOOR
HOT WATER RETURN LINE	CO	CLEAN OUT
GAS LINE	CW	COLD WATER
NON-POTABLE COLD WATER LINE	EW	ELECTRIC WATER COOLER
SOIL OR WASTE LINE	FEE	FINISH FLOOR ELEVATION
VENT LINE	FL	FLOOR LINE
BALL VALVE	GM	GALLONS PER MINUTE
BALANCING VALVE	HP	HORSE POWER
GAS OR WATER PRESSURE REGULATOR	HW	HOT WATER
CHECK VALVE	HWR	HOT WATER RETURN
SOLENOID VALVE	INVY	INVERT
UNION	LAV	LAVATORY
PIPE TURNING UP	NC	NORMALLY CLOSED
PIPE TURNING DOWN	NPWC	NON-POTABLE COLD WATER
FLOOR CLEANOUT	PS	POUNDS PER SQUARE
BACK WASH DRAIN	PRV	PRESSURE REDUCING VALVE
RAISED FLOOR	RL	RAISED FLOOR
RESER DRAIN	RPZB	REDUCED PRESSURE ZONE B.F. PREVENTER
REVISION NUMBER	SS	SOIL STACK
FLOOR CLEANOUT	TG	TRAP CLEANOUT
TEMPERATURE	TR	TEMPERATURE
URINAL	UR	URINAL
WASTE DRAIN	VD	VENT DOWN THRU ROOF
FLOOR SINK	VS	WASTE STACK
WASH SINK	WS	WASTE STACK
W.C. (WATER CLOSURE)	WC	WATER CLOSURE
W.C. (WATER CLOSURE)	WC	WATER CLOSURE
W.C. (WATER CLOSURE)	WC	WATER CLOSURE

PLUMBING FIXTURE CONNECTION SCHEDULE

MARK	FIXTURE	WASTE	CW	HW	REMARK
P-1	WATER CLOSET	4"	1"	-	WALL HUNG
P-2	WATER CLOSET	4"	1"	-	WALL HUNG, ADA
P-3	URINAL	2"	3/4"	-	WALL HUNG
P-4	URINAL	2"	3/4"	-	WALL HUNG, ADA
P-5	LAVATORY	1-1/4"	1/2"	1/2"	COUNTER-TOP, ADA, WITH TMY SET TO 109 DEG F
P-6	LAVATORY	1-1/4"	1/2"	1/2"	WALL HUNG, ADA, WITH TMY SET TO 109 DEG F
P-7	ELEC. WATER COOLER	1-1/4"	1/2"	-	BL-LEVEL, ADA
P-8	SHOWER	2"	1/2"	1/2"	-
P-9	SHOWER	2"	1/2"	1/2"	ADA
P-10	JANITOR'S RECEPTOR	3"	1/2"	1/2"	24"x24" PRE-CAST
P-11	EMERGENCY SHOWER/EYE WASH	-	1/2"	1/2"	-
P-12	EXTRACTOR	1-1/4"	-	-	-
P-13	WASHING MACHINE BOX	2"	1/2"	1/2"	-

GAS WATER HEATER SCHEDULE

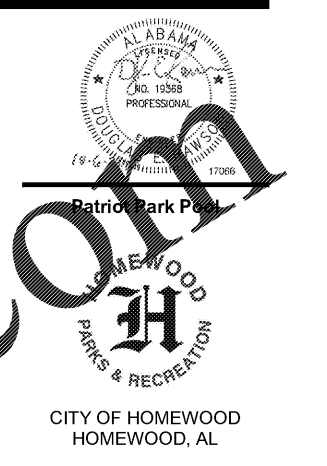
MARK	LOCHINVAR	LOCATION	CW	HW	CFH	GAL.	SET PT.	REMARKS
GWH#1	SH201-100	WH STRG 004	2"	2"	199	90	120	120V, 1PH ELECTRICAL CONNECTION

PUMP SCHEDULE

MARK	ARMSTRONG	LOCATION	GPM	FT HEAD	HP	Y/P	TYPE	REMARKS
RCF-1	23055	WH STRG 004	1	5	1/25	120/1	IN-LINE	DOAL. HW RE-CIRCULATION PUMP

APPLIANCE CONNECTION SCHEDULE

MARK	FIXTURE	WASTE	CW	HW	GAS	REMARKS
(1)	THREE COMPARTMENT SINK	(3) 1-1/2"	1/2"	1/2"	-	PIPE WASTE TO FS
(2)	HAND SINK	1-1/2"	1/2"	1/2"	-	PROVIDE TMY SET AT 109F
(3)	BEVERAGE DISPENSER	3/4"	1/2"	-	-	PIPE WASTE TO FS, PROVIDE BFP ON CW
(4)	COFFEE BREWER	-	1/2"	-	-	-
(5)	TEA BREWER	-	1/2"	-	-	-
(6)	SERVICE FAUCET	-	1/2"	1/2"	-	-
(7)	ICE MAKER	3/4"	1/2"	-	-	PIPE WASTE TO FS
(8)	CHEST FREEZER	1/2"	-	-	-	PIPE WASTE TO FS
(9)	GAS GRIDDLE	-	-	-	3/4"	120 CFH
(10)	GAS FRYER	-	-	-	1"	220 CFH
(11)	WORK TABLE	1-1/2"	1/2"	1/2"	-	-



City of Homewood
HOMEWOOD, AL

DAVIS ARCHITECTS

OWNER
HOMEWOOD PARKS AND RECREATION
1632 OAKWOOD ROAD
HOMEWOOD, AL 35209
205-322-6704
ATTN: BENJAMIN SQUIRES

ARCHITECT
DAVIS ARCHITECTS, INC.
120 3RD STREET SOUTH
BIRMINGHAM, AL 35233
205-322-4802
ATTN: JIM HARTSELL

LANDSCAPE ARCHITECT
LNP
1914 20TH AVE S
BIRMINGHAM, AL 35209
205-324-4447
ATTN: TOMMY HOLCOMBE / ED NORTON

CONSTRUCTION MANAGER
BL HARBERT
820 SHADES CREEK PARKWAY, SUITE 3000
BIRMINGHAM, AL 35209
205-982-2000
ATTN: JOHN HANSON

STRUCTURAL ENGINEER
LEVY INC.
716 SOUTH 30TH STREET
BIRMINGHAM, AL 35233
205-251-4500
ATTN: W.B. BISHOP / BRAD CHRISTOPHER

MECHANICAL ENGINEER
WHITAKER & RAWSON
3332 OLD MONTGOMERY HIGHWAY
SUITE 103
BIRMINGHAM, AL 35209
205-949-5128
ATTN: MARK D'ANDREA AND DAN WHITAKER

CIVIL ENGINEER
LEVY INC.
716 SOUTH 30TH STREET
BIRMINGHAM, AL 35233
205-251-4500
ATTN: CURTIS EATMAN AND BRIAN HATCHER

ELECTRICAL ENGINEER
FISHER ARNOLD
1507 ALEX DR.
SUITE 101
BIRMINGHAM, AL 35210
205-953-7633
ATTN: JOSEPH KUMU AND NICHOLAS BROWN

PLUMBING / FIRE PROTECTION ENGINEER
WHITAKER & RAWSON
3332 OLD MONTGOMERY HIGHWAY
SUITE 103
BIRMINGHAM, AL 35209
205-949-5107
ATTN: ERIC HARTWIG

POOL CONSULTANT
COUNSLMAN HUNSAKE
10733 SUNSET OFFICE DRIVE
SUITE 400
ST. LOUIS, MO 63127
314-894-1246
ATTN: JEFF NODORFT

REV.	DATE	DESCRIPTION

OCTOBER 6, 2017

100% CONSTRUCTION DOCUMENTS

DAVIS ARCHITECTS PROJECT NO. 3822

PLUMBING SCHEDULES, DETAILS, & NOTES

DRAWING NO.

P0.01

Order Plans @



WHITAKER & RAWSON, LLC
3332 Old Montgomery Hwy
Suite 103, Morris Bldg.
Birmingham, AL 35209
www.whitakerandrawson.com
Mobile: 205-949-5128
Fax: 205-949-5107
WAR PROJECT NUMBER: T1969