



**HOMWOOD PATRICK PARK POOL**  
**HOMWOOD PARKS & RECREATION**  
**HOMWOOD PARKS AND RECREATION: HOMWOOD, AL**

**DAVIS ARCHITECTS**

**OWNER:**  
 HOMWOOD PARKS AND RECREATION  
 1632 OXMOOR ROAD  
 HOMWOOD, AL 35209  
 205-332-6704  
 ATTN: BEKLEY SQUIRES

**ARCHITECT:**  
 DAVIS ARCHITECTS, INC.  
 120 23RD STREET SOUTH  
 BIRMINGHAM, AL 35233  
 205-332-7482  
 ATTN: JIM HARTSELL

**LANDSCAPE ARCHITECT:**  
 HNP  
 1914 28TH AVE S  
 BIRMINGHAM, AL 35209  
 205-324-4447  
 ATTN: TOMMY HOLCOMBE / ED NORTON

**CONSTRUCTION MANAGER:**  
 EL HARBERT  
 820 SHADES CREEK PARKWAY, SUITE 3000  
 BIRMINGHAM, AL 35209  
 205-662-2900  
 ATTN: JOHN HANSON

**STRUCTURAL ENGINEER:**  
 LBVD INC.  
 745 SOUTH 30TH STREET  
 BIRMINGHAM, AL 35233  
 205-251-4500  
 ATTN: WILBESHOP / BRAD CHRISTOPHER

**MECHANICAL ENGINEER:**  
 WHITAKER & RAWSON  
 3332 OLD MONTGOMERY HIGHWAY  
 SUITE 103  
 BIRMINGHAM, AL 35209  
 205-949-5128  
 ATTN: MARK D'ANDREA AND DAN WHITAKER

**CIVIL ENGINEER:**  
 LBVD INC.  
 745 SOUTH 30TH STREET  
 BIRMINGHAM, AL 35233  
 205-251-4500  
 ATTN: CHRIS EATMAN AND BRAIN HATCHER

**ELECTRICAL ENGINEER:**  
 FISHER ARNOLD  
 1507 ALEX DR.  
 SUITE 101  
 BIRMINGHAM, AL 35210  
 205-833-7038  
 ATTN: JOSEPH KIUMU AND NICHOLAS BROWN

**PLUMBING / FIRE PROTECTION ENGINEER:**  
 WHITAKER & RAWSON  
 3332 OLD MONTGOMERY HIGHWAY  
 SUITE 103  
 BIRMINGHAM, AL 35209  
 205-949-5107  
 ATTN: ERIC HARTWIG

**POOL CONSULTANT:**  
 COUNSILMAN HUNSAKE  
 10733 SUNSET OFFICE DRIVE  
 SUITE 400  
 ST. LOUIS, MO 63127  
 314-894-1245  
 ATTN: JEFF NODORFT

REV	DATE	DESCRIPTION

DATE: OCTOBER 6, 2017

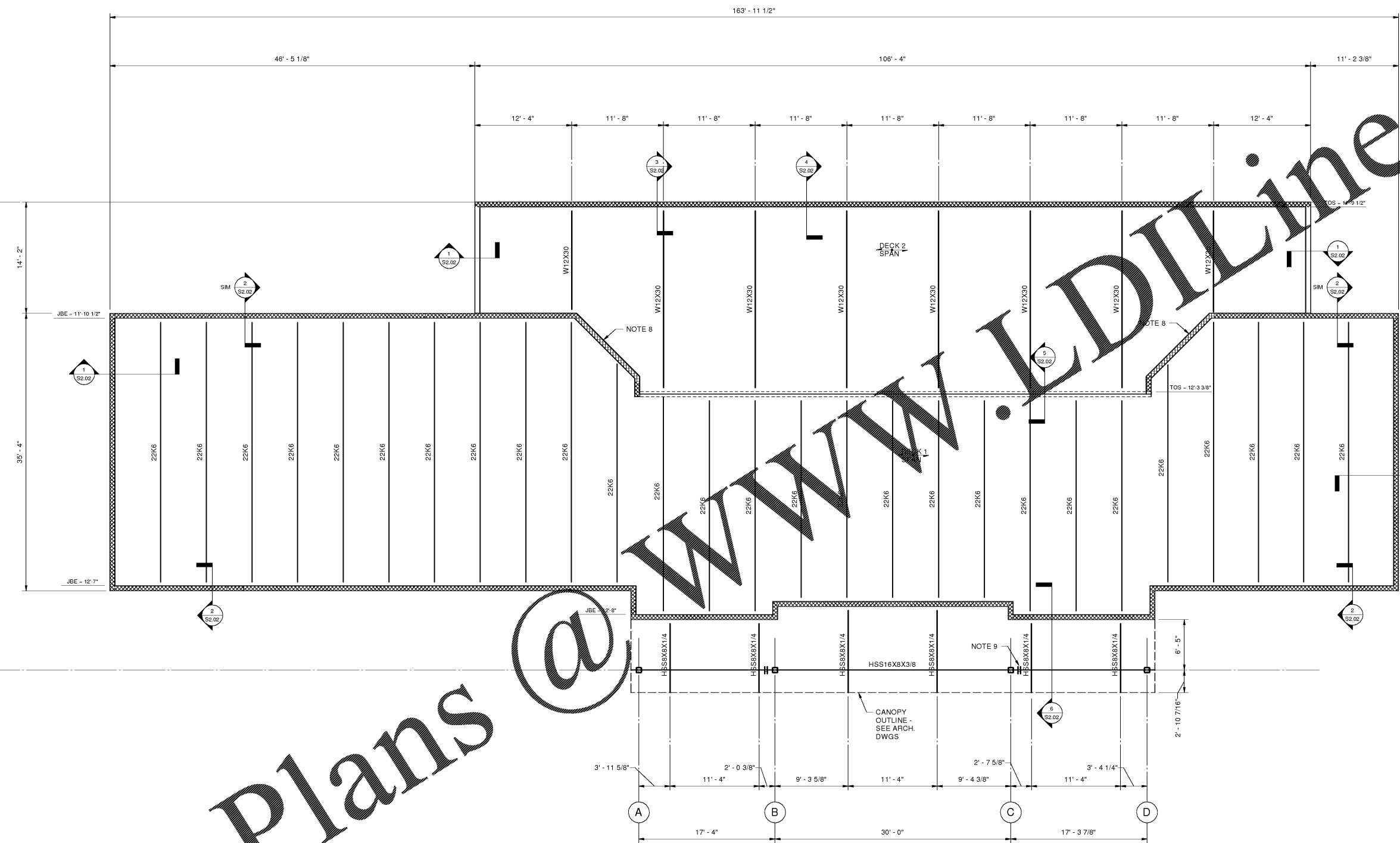
SCALE: 100% CONSTRUCTION DOCUMENTS

DRAWN BY: DAVIS ARCHITECTS PROJECT NO: 3822

SHEET TITLE: Roof Framing Plan

DRAWING NO:

**S1.02**



**Roof Framing Plan**

3/16" = 1'-0"

1. JOIST BEARING ELEVATION (JBE) NOTED ON PLAN. TOP OF STEEL (TOS) ELEVATION NOTED ON PLAN.
2. ROOF SYSTEMS: DECK 1 - TYPE 1.5B, 22 GAGE ROOF DECK ON STEEL JOISTS. DECK 2 - TYP 30 20 GAGE ROOF DECK ON STEEL BEAMS. SEE GENERAL NOTES.
3. TOP OF STEEL IS EITHER LEVEL OR SLOPING UNIFORMLY BETWEEN NOTED ELEVATIONS.
4. SPACE STEEL JOISTS EQUALLY BETWEEN WALLS.
5. PROVIDE ROOF EQUIPMENT FRAME AT ALL ROOF DRAINS.
6. HANGER LOCATIONS FOR PIPING LARGER THAN 3 INCHES IN DIAMETER MUST BE COORDINATED BY THE GENERAL CONTRACTOR WITH THE JOIST MANUFACTURER. FOR WEIGHT OF PIPING AND ANY ADDITIONAL JOIST REINFORCING, SEE TYPICAL DETAILS.
7. ALL JOIST BEARING DEPTHS ARE 2 1/2".
8. PROVIDE DECK SHELF ANGLE ON BOTH SIDES OF WALL SIM. TO 1/32.02.
9. WELDED HSS SPLICE. USE 1/4" PJP ALL-AROUND AND GRIND SMOOTH.

Order Plans @ [www.LDOnline.com](http://www.LDOnline.com)