



HOMWOOD PATRIOT PARK POOL



HOMWOOD PARKS AND RECREATION: HOMWOOD, AL

DAVIS ARCHITECTS

OWNER
 HOMWOOD PARKS AND RECREATION
 1632 OAKWOOD ROAD
 HOMWOOD, AL 35209
 205-332-6704
 ATTN: BEKLEY SQUIRES

ARCHITECT
 DAVIS ARCHITECTS, INC.
 120 23RD STREET SOUTH
 BIRMINGHAM, AL 35233
 205-332-7482
 ATTN: JIM HARTSELL

LANDSCAPE ARCHITECT
 HNP
 1914 28TH AVE S
 BIRMINGHAM, AL 35209
 205-334-4447
 ATTN: TOMMY HOLCOMBE / ED NORTON

CONSTRUCTION MANAGER
 DL HARBOTT
 820 SHADES CREEK PARKWAY, SUITE 3000
 BIRMINGHAM, AL 35209
 205-692-2900
 ATTN: JOHN HANSON

STRUCTURAL ENGINEER
 LBYD INC.
 715 SOUTH 30TH STREET
 BIRMINGHAM, AL 35233
 205-251-4500
 ATTN: WARD BISHOP / BRAD CHRISTOPHER

MECHANICAL ENGINEER
 WHITAKER & RAWSON
 3332 OLD MONTGOMERY HIGHWAY
 SUITE 103
 BIRMINGHAM, AL 35209
 205-949-5128
 ATTN: MARK D'ANDREA AND DAN WHITAKER

CIVIL ENGINEER
 LBYD INC.
 715 SOUTH 30TH STREET
 BIRMINGHAM, AL 35233
 205-251-4500
 ATTN: CHRIS EATMAN AND BRAIN HATCHER

ELECTRICAL ENGINEER
 FISHER ARNOLD
 1507 ALEX DR.
 SUITE 101
 BIRMINGHAM, AL 35210
 205-833-7033
 ATTN: JOSEPH KIUMU AND NICHOLAS BROWN

PLUMBING / FIRE PROTECTION ENGINEER
 WHITAKER & RAWSON
 3332 OLD MONTGOMERY HIGHWAY
 SUITE 103
 BIRMINGHAM, AL 35209
 205-949-5107
 ATTN: EDK HARTWIG

POOL CONSULTANT
 COUNSILMAN HUNSAKE
 10733 SUNSET OFFICE DRIVE
 SUITE 400
 ST. LOUIS, MO 63127
 314 894 1245
 ATTN: JEFF NODORFT

REV	DATE	DESCRIPTION

DATE: OCTOBER 9, 2017

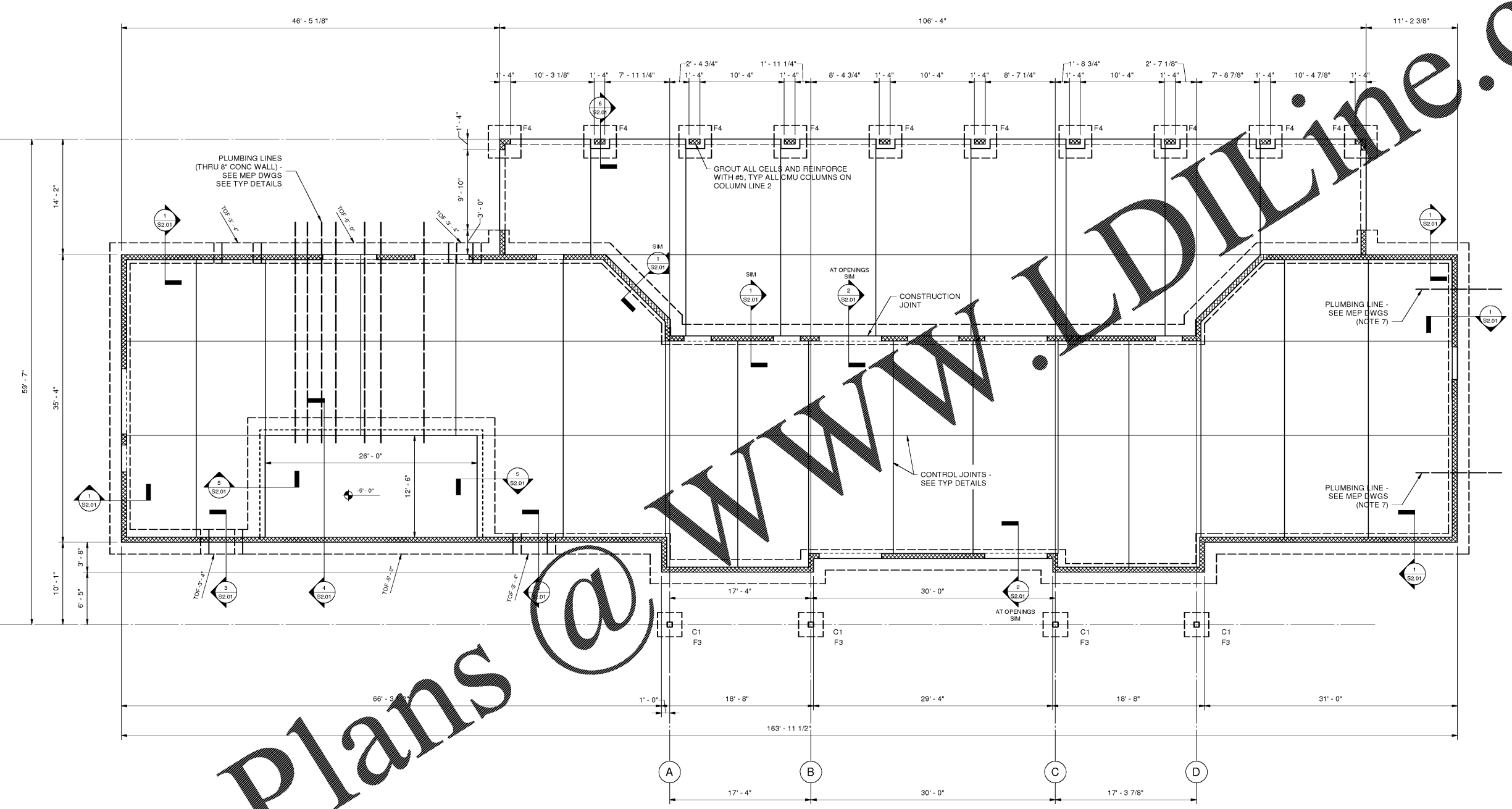
PROJECT: 100% CONSTRUCTION DOCUMENTS

DRAWING NO: DAVIS ARCHITECTS PROJECT NO: 3822

SHEET TITLE: Foundation Plan

DRAWING NO:

S1.01



- Foundation Plan**
 3/16" = 1'-0"
1. FINISH FLOOR (TOP OF SLAB) ELEVATION 0'-0", UNLESS NOTED.
 2. TOP OF FOOTING -1'4" BELOW FINISH FLOOR, UNLESS NOTED.
 3. FOR SLAB ON GRADE CONSTRUCTION, SEE GENERAL NOTES AND TYPICAL DETAILS.
 4. FOR SLAB RECESS AND RAMP LOCATIONS, SEE ARCHITECTURAL DRAWINGS.
 5. GENERAL CONTRACTOR SHALL COORDINATE TILE JOINT LOCATIONS WITH CONTROL JOINTS.
 6. FOOTING STEP ELEVATIONS AND LOCATIONS ARE APPROXIMATE. GENERAL CONTRACTOR SHALL COORDINATE ALL FOOTING STEPS WITH CIVIL, PLUMBING AND UTILITY DRAWINGS.
 7. PROVIDE STEEL PIPE SLEEVE 10'-0" LONG FOR PROTECTION OF PLUMBING LINES UNDER CONTINUOUS FOOTING.

Structural Column Schedule				
COLUMN DESIGNATION	SIZE	BASE PLATE	ANCHOR RODS	NOTES
C1	HSS8x8x3/8	1'-2"x1'-2"x3/4"	3/4"Ø	1

1. MINIMUM EMBEDMENT DEPTH 9".

Structural Foundation Schedule						
FOOTING DESIGNATION	LENGTH	WIDTH	THICKNESS	TOP REINF	BOTTOM REINF	NOTES
F3	3'-0"	3'-0"	1'-0"	4#5 EW	4#5 EW	
F4	4'-0"	4'-0"	1'-0"	5#5 EW	5#5 EW	

Order Plans @ WWW.LDILINE.COM