



HOMEWOOD PATRIOT PARK POOL

HOMEWOOD PARKS AND RECREATION: HOMEWOOD, AL



OWNER: HOMEWOOD PARKS AND RECREATION
 1632 OAKWOOD ROAD
 HOMEWOOD, AL 35209
 205-332-6704
 ATTN: BEKLEY SQUIRES

ARCHITECT: DAVIS ARCHITECTS, INC.
 120 23RD STREET SOUTH
 BIRMINGHAM, AL 35233
 205-332-7482
 ATTN: JIM HARTSELL

LANDSCAPE ARCHITECT: HNP
 1914 28TH AVE S.
 BIRMINGHAM, AL 35209
 205-334-4447
 ATTN: TOMMY HOLCOMBE / ED NORTON

CONSTRUCTION MANAGER: DL HARBERT
 820 SHADES CREEK PARKWAY, SUITE 3000
 BIRMINGHAM, AL 35209
 205-862-2900
 ATTN: JOHN HANSON

STRUCTURAL ENGINEER: LBVD INC.
 716 SOUTH 30TH STREET
 BIRMINGHAM, AL 35233
 205-251-4500
 ATTN: WARD BISHOP / BRAD CHRISTOPHER

MECHANICAL ENGINEER: WHITAKER & RAWSON
 3332 OLD MONTGOMERY HIGHWAY
 SUITE 103
 BIRMINGHAM, AL 35209
 205-949-5128
 ATTN: MARK D'ANDREA AND DAN WHITAKER

CIVIL ENGINEER: LBVD INC.
 716 SOUTH 30TH STREET
 BIRMINGHAM, AL 35233
 205-251-4500
 ATTN: CURTIS EATMAN AND BRAIN HATCHER

ELECTRICAL ENGINEER: FISHER ARNOLD
 1507 ALEX DR.
 SUITE 101
 BIRMINGHAM, AL 35210
 205-833-7033
 ATTN: JOSEPH KUMU AND NICHOLAS BROWN

PLUMBING / FIRE PROTECTION ENGINEER: WHITAKER & RAWSON
 3332 OLD MONTGOMERY HIGHWAY
 SUITE 103
 BIRMINGHAM, AL 35209
 205-949-5107
 ATTN: ERIC HARTWIG

POOL CONSULTANT: COUNSILMAN HUNSAKE
 10733 SUNSET OFFICE DRIVE
 SUITE 400
 ST. LOUIS, MO 63127
 314 894 1245
 ATTN: JEFF NODORFT

REV	DATE	DESCRIPTION

DATE: OCTOBER 6, 2017

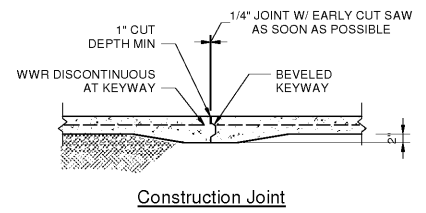
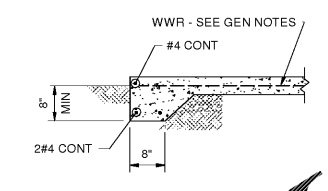
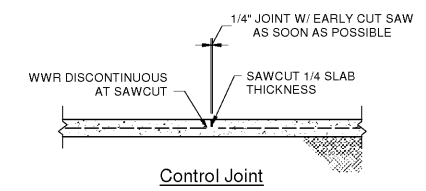
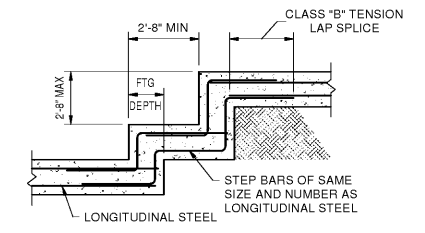
SCALE: 100% CONSTRUCTION DOCUMENTS

DESIGNED BY: DAVIS ARCHITECTS PROJECT NO. 3822

SHEET TITLE: Typical Details

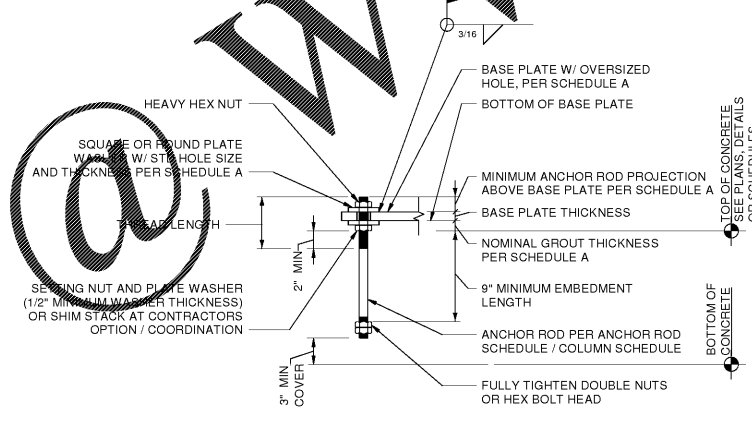
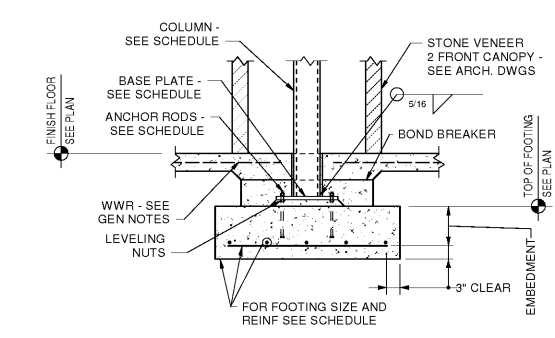
DRAWING NO.

S0.04



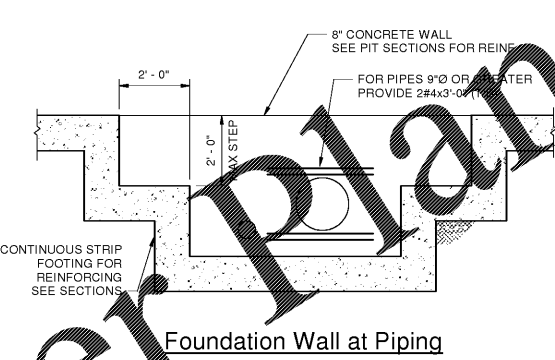
NOTES:
 1. CONTROL JOINT FILLER SEMI-RIGID EPOXY.
 2. SAWCUT TO TAKE PLACE WITHIN 4-12 HOURS OF FINISHING CONCRETE. 4 HOURS IN HOT WEATHER, 12 HOURS IN COLD WEATHER.

Slab Control Joint Details
 JOINT TYPE IS OPTIONAL



Schedule A					
ANCHOR ROD DIAMETER	BASE PL HOLE DIA	MIN WASHER SIZE	MIN WASHER t	MIN PROJ ABOVE BASE PL	NOMINAL GROUT THICKNESS
3/4"	1 5/16"	2"	1/4"	2 1/2"	1 1/2"

BAR SIZE	C _t = 3000			
	TOP BARS		OTHER BARS	
	A	B	A	B
#3	22"	28"	17"	22"
#4	28"	37"	22"	28"
#5	36"	47"	28"	36"
#6	43"	56"	33"	43"
#7	63"	81"	48"	63"
#8	72"	93"	55"	72"
#9	81"	105"	62"	81"
#10	91"	118"	70"	91"
#11	101"	131"	78"	101"



STEP FOOTING DOWN AS REQUIRED TO KEEP FOOTING BELOW PIPING. FOR LOCATION, SEE FOUNDATION PLANS. FOR LOCATION NOT SHOWN ON FOUNDATION PLANS, SEE PLUMBING PLANS.

Order Plans

WWW.LDILine.com