



**HOMEWOOD PATRICK PARK POOL**  
**HOMEWOOD PARKS AND RECREATION: HOMEWOOD, AL**

**DAVIS ARCHITECTS**

OWNER: HOMEWOOD PARKS AND RECREATION  
 1632 OAKWOOD ROAD, HOMEWOOD, AL 35209  
 205-322-6704  
 ATTN: BERKLEY SQUIRES

ARCHITECT: DAVIS ARCHITECTS, INC.  
 120 23RD STREET SOUTH, BIRMINGHAM, AL 35233  
 205-322-7482  
 ATTN: JIM HARTSELL

LANDSCAPE ARCHITECT: HNP  
 1914 28TH AVE S, BIRMINGHAM, AL 35209  
 205-324-4447  
 ATTN: TOMMY HOLCOMBE / ED NORTON

CONSTRUCTION MANAGER: DL HARBERT  
 820 SHADES CREEK PARKWAY, SUITE 3000, BIRMINGHAM, AL 35209  
 205-862-2900  
 ATTN: JOHN HANSON

STRUCTURAL ENGINEER: LBVD INC.  
 715 SOUTH 30TH STREET, BIRMINGHAM, AL 35233  
 205-251-4500  
 ATTN: WARD BISHOP / BRAD CHRISTOPHER

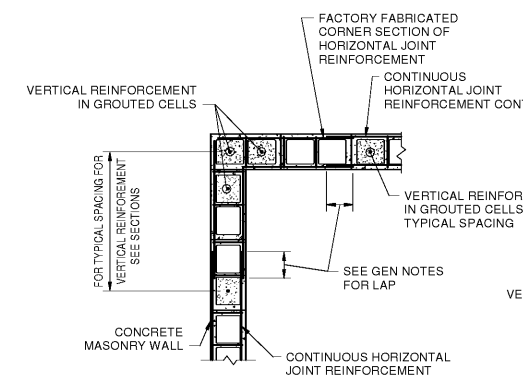
MECHANICAL ENGINEER: WHITAKER & RAWSON  
 3332 OLD MONTGOMERY HIGHWAY, SUITE 103, BIRMINGHAM, AL 35209  
 205-949-5128  
 ATTN: MARK D'ANDREA AND DAN WHITAKER

CIVIL ENGINEER: LBVD INC.  
 715 SOUTH 30TH STREET, BIRMINGHAM, AL 35233  
 205-251-4500  
 ATTN: CURTIS EATMAN AND BRAIN HATCHER

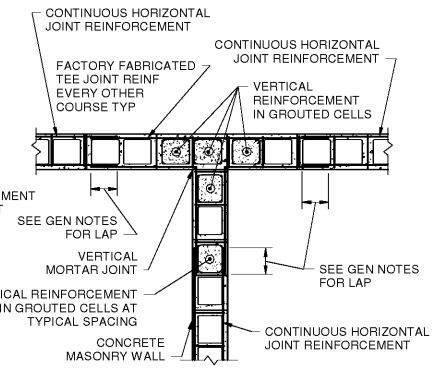
ELECTRICAL ENGINEER: FISHER ARNOLD  
 1507 ALEX DR., SUITE 101, BIRMINGHAM, AL 35210  
 205-833-7033  
 ATTN: JOSEPH KUMU AND NICHOLAS BROWN

PLUMBING / FIRE PROTECTION ENGINEER: WHITAKER & RAWSON  
 3332 OLD MONTGOMERY HIGHWAY, SUITE 103, BIRMINGHAM, AL 35209  
 205-949-5107  
 ATTN: EDK HARTWIG

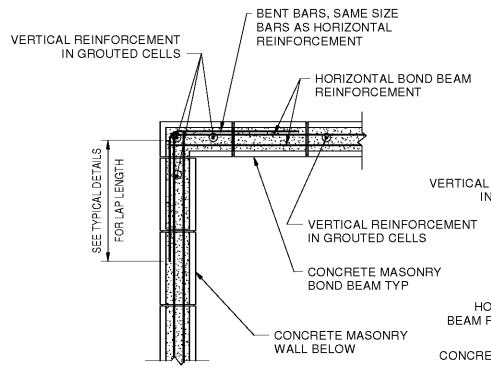
POOL CONSULTANT: COUNSILMAN HUNSAKE  
 10733 SUNSET OFFICE DRIVE, SUITE 400, ST. LOUIS, MO 63127  
 314-894-1245  
 ATTN: JEFF NODORFT



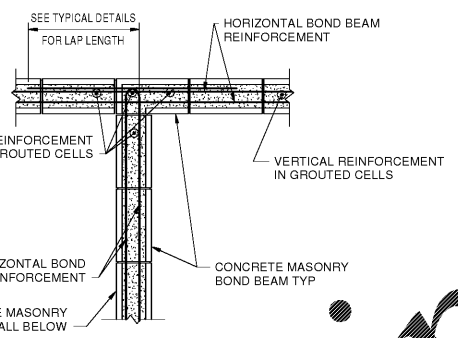
**Plan Showing Joint Reinforcement at Wall Corner**



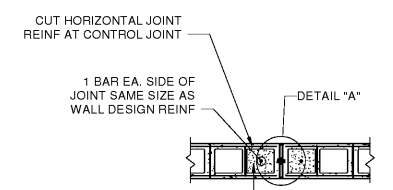
**Plan Showing Joint Reinforcement at Structural Wall Intersection**



**Plan Showing Bond Beam Reinforcement at Wall Corner**

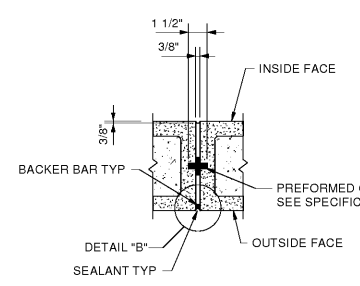


**Plan Showing Bond Beam at Structural Wall Intersection**

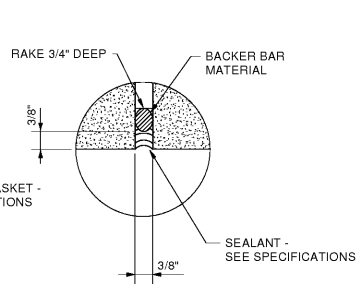


GROUT REINF CELLS SOLID ENTIRE HEIGHT OF WALL

NOTE: SEE ARCHITECTURAL DRAWINGS FOR CONTROL JOINT LOCATIONS. CONTROL JOINT SPACING NOT TO EXCEED 25'-0" OR 1.5 TIMES THE WALL HEIGHT, WHICHEVER IS LESS.

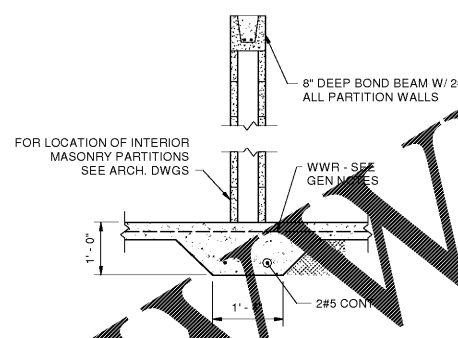


**Detail "A"**

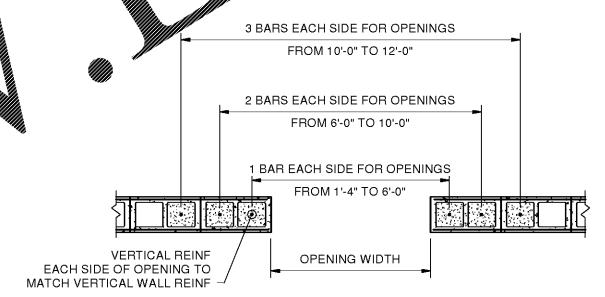


**Detail "B"**

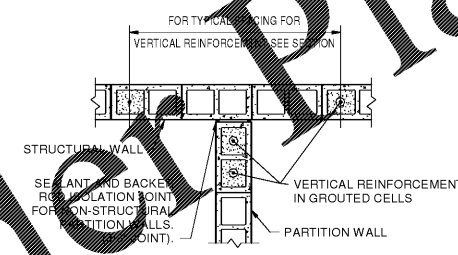
**Masonry Control Joint**



**Thickened Slab at Grade Detail**



**CMU Wall Opening Detail**

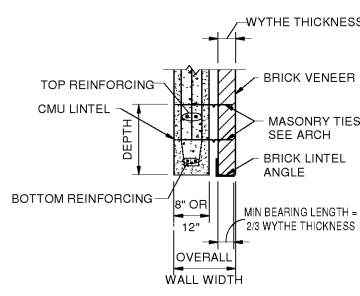


**Partition Walls Abutting Structural Walls**

**Masonry Tension Lap Splice Lengths**

BAR SIZE	f'm = 2000		
	8" CMU	12" CMU	2" COVER
#3	12"	12"	13"
#4	13"	12"	22"
#5	20"	13"	35"
#6	38"	24"	64"
#7	52"	33"	87"
#8	79"	50"	131"
#9	--	64"	167"

- THIS TABLE CONTAINS DEVELOPMENT AND SPLICE LENGTHS FOR REINFORCEMENT IN CMU ACCORDING TO ACI 530-13/ TMS 402-13/ASCE 5-13.
- VALUES FOR 8" AND 12" CMU TO BE USED FOR BARS CENTERED IN WALL. VALUES FOR 2" COVER TO BE USED FOR DOUBLY REINFORCED WALLS AND BOND BEAMS/LINTELS W/ (2) BARS IN A SINGLE LAYER.
- FOR DEVELOPMENT AND SPLICE LENGTHS OF EPOXY COATED BARS, MULTIPLY TABULATED VALUES BY 1.5.
- WHERE VERTICAL BAR IS INTERRUPTED BY A BEARING PLATE OR OTHER OBSTRUCTION, PROVIDE BACK DOWEL MATCHING VERTICAL REINFORCEMENT W/ 6" MAXIMUM OFFSET.



MAXIMUM OPENING WIDTH	BRICK LINTEL ANGLE	CMU LINTEL DIMENSIONS AND REINFORCING			
		DEPTH	8" WALL		12" WALL
			8" WALL	12" WALL	12" WALL
2'-0"	L3 1/2x3 1/2x3/8	8	1#4 BOT	1#4 BOT	
4'-0"	L3 1/2x3 1/2x3/8	8	1#4 BOT	2#4 BOT	
6'-0"	L3 1/2x3 1/2x3/8	8	1#5 BOT & 1#4 TOP	2#5 BOT & 2#4 TOP	
8'-0"	L5x3 1/2x3/8	16	1#6 BOT & 1#5 TOP	2#5 BOT & 2#4 TOP	
10'-0"	---	24	1#7 BOT & 1#5 TOP	2#6 BOT & 2#4 TOP	
12'-0"	---	24	1#8 BOT & 1#5 TOP	2#7 BOT & 2#5 TOP	

- DO NOT USE THIS SCHEDULE IF CONCENTRATED LOAD IS APPLIED TO THE LINTEL AT A HEIGHT LESS THAN HALF THE SPAN ABOVE THE LINTEL, OR IF STACK BOND IS SPECIFIED.
- PROVIDE 8" MINIMUM BEARING FOR ALL LINTELS.

**Masonry Lintel Detail and Schedule**

REV	DATE	DESCRIPTION

DATE: OCTOBER 9, 2017  
 PROJECT: 100% CONSTRUCTION DOCUMENTS  
 SHEET NO: 3822  
 SHEET TITLE: Typical Details