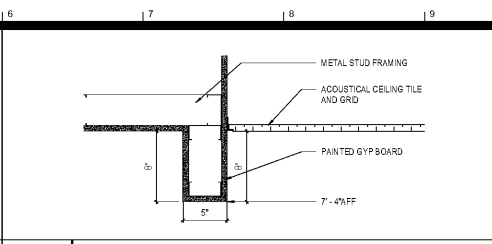
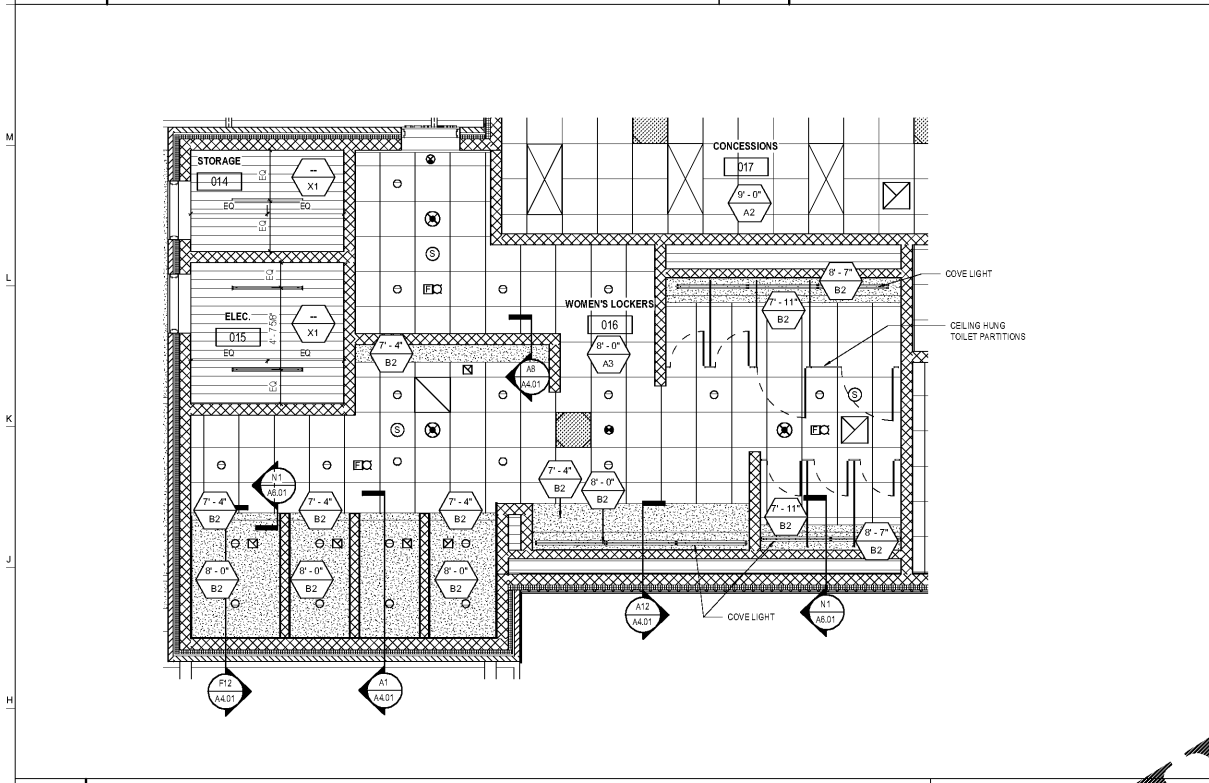


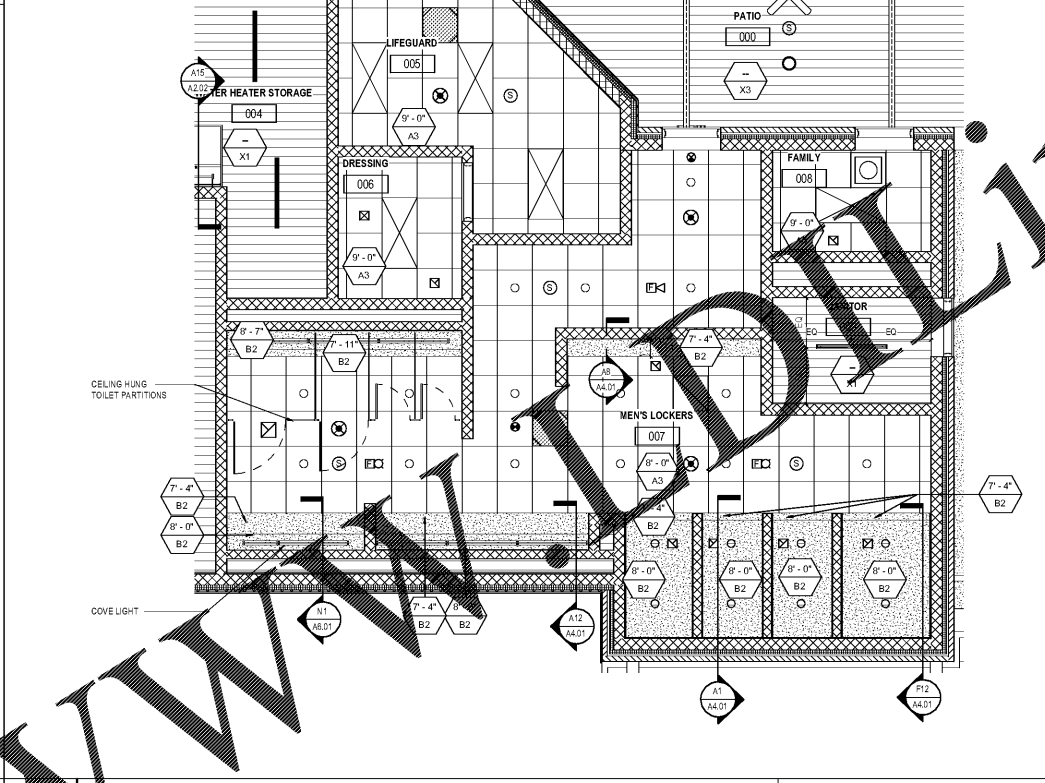
N1 CEILING DETAIL @ LIGHT COVE
A1 / A4.00 SCALE: 1 1/2" = 1'-0"



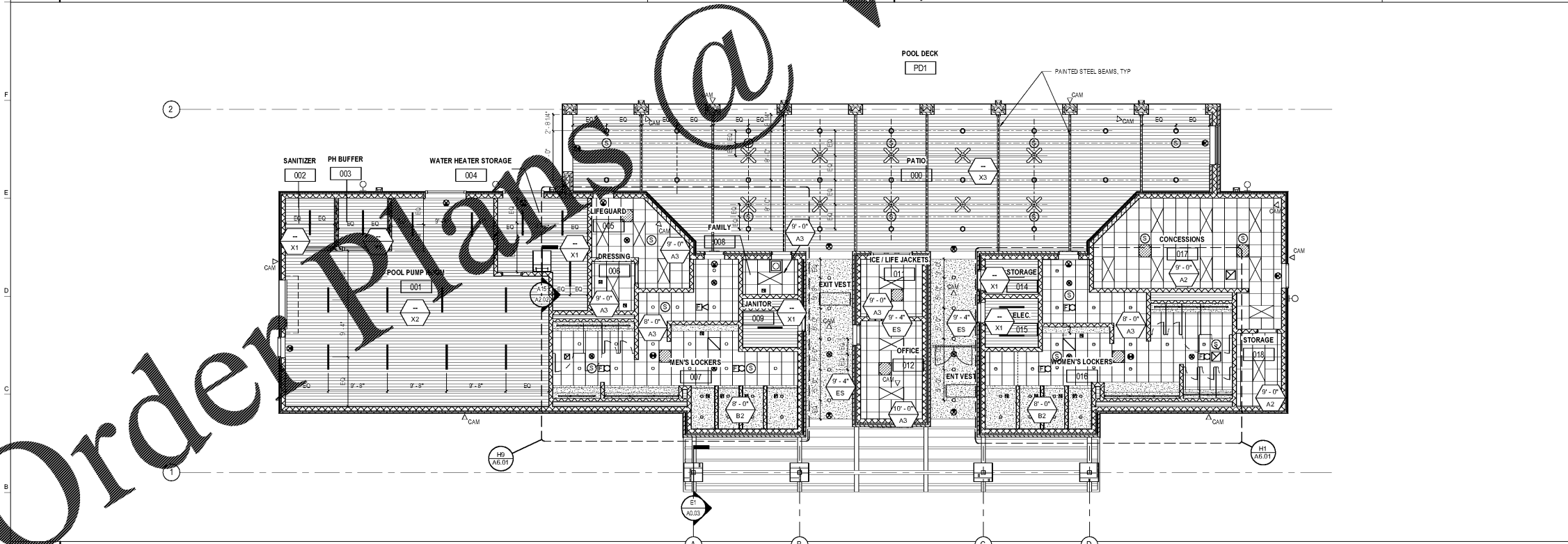
N6 CEILING DETAIL @ SHOWER
E1 / A4.00 SCALE: 1 1/2" = 1'-0"



H1 ENLARGED RCP @ WOMEN'S LOCKERS
A1 / A6.01 SCALE: 1/4" = 1'-0"



G1 ENLARGED RCP @ MEN'S LOCKERS 30
N1 / A6.01 SCALE: 1/4" = 1'-0"



A1 LEVEL 1 - REFLECTED CEILING PLAN
E1 / A0.03 SCALE: 1/8" = 1'-0"

RCP SYMBOLS LEGEND

	2x4 FIXTURE
	4x8 FIXTURE
	FLUORESCENT STRIP
	RECESSED CAN LIGHT
	PENDANT FIXTURE
	LIGHT COVE
	EXTERIOR WALL SCONCE
	CEILING FAN
	CEILING MOUNTED SPEAKER
	OCCUPANCY SENSOR
	SECURITY CAMERA
	FLUORESCENT STRIP
	EXIT SIGN
	FIRE ALARM SYSTEM CEILING DEVICE-STROBE
	FIRE ALARM SYSTEM CEILING DEVICE-HORN
	CEILING HEATER
	MECHANICAL AC UNIT CEILING CASSETTE
	MECHANICAL DIFFUSERS
	HEIGHT ABOVE FINISH FLOOR
	CEILING TYPE

GENERAL NOTES

- HEIGHTS INDICATED ARE RELATIVE TO FLOOR LEVEL WHERE CEILING TAG IS LOCATED UNLESS OTHERWISE NOTED. SEE MECHANICAL AND ELECTRICAL DRAWINGS FOR FINAL CEILING DEVICES. (IE LIGHT FIXTURES, HVAC GRILLS, ETC).
- COORDINATE LOCATIONS WITH ARCHITECT.
- ALL ELECTRICAL ITEMS AND LOCATIONS TO BE COORDINATED WITH ELECTRICAL DRAWINGS.
- DIMENSIONS INDICATED ARE NOMINAL AT MASONRY OPENINGS - SEE WALL SECTIONS.
- CONTRACTOR TO PROVIDE ACCESS PANELS IN GYPSUM BOARD CEILINGS - COORDINATE WITH MEP.
- ACCESS PANELS ARE TO BE PAINTED THE SAME COLOR AS THE CEILING. COORDINATE LOCATIONS AROUND LIGHTING AND MECHANICAL FIXTURES.
- ALL SPRINKLER HEADS AND OTHER CEILING DEVICES SHALL BE CENTERED VERTICALLY AND HORIZONTALLY IN ADJUSTABLE CEILING TILES. TYPICAL.
- SEE FINISH LEGEND AS TO FOR MORE INFORMATION.
- RESTROOM TOILET PARTITIONS ARE CEILING MOUNTED. GC TO COORDINATE WITH STRUCTURAL, ELECTRICAL, AND MECHANICAL. GC TO PROVIDE BRACINGS ABOVE CEILING AS REQUIRED.

MATERIALS LEGEND

REV	DATE	DESCRIPTION
A1		NOT USED
A2		2X2 ACoustical LAY-IN CEILING & GRID - MOISTURE RESISTANT
A3		2X2 ACoustical LAY-IN CEILING & GRID - MOISTURE RESISTANT
B1		GYPSUM BOARD, PAINTED (P-1)
B2		MOISTURE RESISTANT GYP BO, PAINTED (P-1)
B3(P-A)		GYPSUM BOARD, PAINTED (REFER TO A0.03 FOR COLOR)
B4		GYPSUM BOARD, PAINTED (P-1) 1 HOUR RATED CEILING ASSEMBLY
X1		EXPOSED CEILING, UNPAINTED
X2		EXPOSED CEILING, PAINTED
X3		EXPOSED STRUCTURE - PREFINISHED DECKING (EXPOSED STEEL PAINTED)
ES		EXTERIOR STUCCO



HOMWOOD PATRICK PARK POOL
HOMWOOD PARKS & RECREATION

HOMWOOD PARKS AND RECREATION; HOMWOOD, AL

DAVIS ARCHITECTS
OWNER: HOMWOOD PARKS AND RECREATION
1633 OXMOOR ROAD
HOMWOOD, AL 35209
205-322-6704
ATTN: BENJELLY SQUIRES

ARCHITECT: DAVIS ARCHITECTS, INC.
120 23RD STREET SOUTH
BRIMMINGHAM, AL 35233
205-322-7482
ATTN: JIM HARTSELL

LANDSCAPE ARCHITECT: HNP
1914 28TH AVE S
BRIMMINGHAM, AL 35209
205-324-4447
ATTN: TOMMY HOLCOMBE / ED NORTON

CONSTRUCTION MANAGER: BL HARBERT
820 SHADES CREEK PARKWAY, SUITE 3000
BRIMMINGHAM, AL 35209
205-982-2900
ATTN: JOHN HANSON

STRUCTURAL ENGINEER: LEYD INC.
716 SOUTH 30TH STREET
BRIMMINGHAM, AL 35233
205-251-4500
ATTN: WIM BISHOP / BRAD CHRISTOPHER

MECHANICAL ENGINEER: WHITAKER & RAWSON
3332 OLD MONTGOMERY HIGHWAY
SUITE 103
BRIMMINGHAM, AL 35209
205-985-5128
ATTN: MARK D'ANDREA AND DAN WHITAKER

CIVIL ENGINEER: LEYD INC.
716 SOUTH 30TH STREET
BRIMMINGHAM, AL 35233
205-251-4500
ATTN: CURTIS EATMAN AND BRIAN HATCHER

ELECTRICAL ENGINEER: FISHER ARNOLD
1507 ALEX DR.
SUITE 101
BRIMMINGHAM, AL 35210
205-933-7633
ATTN: JOSEPH KUMU AND NICHOLAS BROWN

PLUMBING / FIRE PROTECTION ENGINEER: WHITAKER & RAWSON
3332 OLD MONTGOMERY HIGHWAY
SUITE 103
BRIMMINGHAM, AL 35209
205-949-5107
ATTN: ERIC HARTWIG

POOL CONSULTANT: COUNSILMAN HUNSAKE
10733 SUNSET OFFICE DRIVE
SUITE 400
ST. LOUIS, MO 63127
314-894-1245
ATTN: JEFF NODORFT

DATE: OCTOBER 6, 2017
PROJECT: 100% CONSTRUCTION SET

DESIGNER: DAVIS ARCHITECTS PROJECT NO: 3822

SHEET TITLE: REFLECTED CEILING PLAN

DRAWING NO.

A6.01