

- GENERAL NOTES**
1. MOUNTING HEIGHTS PER MANUFACTURER'S RECOMMENDATIONS AND CODES (LOCAL, STATE, ADA, ETC).
 2. REFER TO SHEET G1.3 PROJECT STANDARDS.
 3. TOILET ACCESSORIES TO BE STAINLESS STEEL WITH NO. 4 FINISH (UNLESS OTHERWISE NOTED).
 4. MODEL NUMBERS LISTED BY BOBRICK OR PRIOR APPROVED EQUAL (UNLESS OTHERWISE NOTED).
 5. PROVIDE "TRAP WRAP" AT EXPOSED PIPES - SEE SPECIFICATIONS.
 6. PROVIDE MOISTURE-RESISTANT GWB AT ALL TOILETS WHERE GWB IS SPECIFIED.
 7. PROVIDE TILE BACKER-BOARD WITH WALL TILE AT ALL METAL STUD FRAMED WALLS. SEE ELEVATIONS AND FINISH PLANS FOR EXTENT OF PATTERN.
 8. CMU AT ALL OUTSIDE CORNERS TO BE BULLNOSE. BASE COURSE AND COURSE BELOW CEILING TO HAVE 90 DEGREE CORNERS.
 9. CUT CMU COURSE BELOW FINISH FLOOR AT PARTITIONS ON RECESSED SLAB TO MAINTAIN COURSING WITH ADJACENT WALLS.
 10. SLOPE FLOOR TO DRAIN - CONTRACTOR SHOULD TAKE SPECIAL CARE IN AREAS WHERE PARTITIONS ARE SET IN FLOOR THAT WATER IS DIVERTED TOWARD OPENING AND TO FLOOR DRAIN.
 11. UNISTRUT TYPE FRAMING IS GENERALLY PROVIDED FOR THE SUPPORT OF THE TOILET PARTITIONS. SEE DETAIL A16/A4.01 (PROVIDED BY GC).
 12. PAPER TOWEL DISPENSER (T1), TOILET TISSUE HOLDER (T2), SOAP DISPENSER (T3), AND BODY WASH / SHAMPOO DISPENSER (T4) ARE OWNER FURNISHED AND INSTALLED. NOTE: INSTALLER OF OWNER FURNISHED ACCESSORIES TO COMPLY WITH CODES, ADA, AND ANSI AS THE RELATE TO ACTUAL ACCESSORIES PURCHASED AND COORDINATE WITH CONTRACTOR PROVIDED AND INSTALLED ACCESSORIES.
 13. REFER TO SPECIFICATION SECTIONS 083000 (MIRRORS), 102113.19 (TOILET COMPARTMENTS), 102800 (TOILET, BATH, AND LAUNDRY ACCESSORIES), & 105129 (SOLID PHENOLIC LOCKERS).

MARK	DESCRIPTION	MANUFACTURER	MODEL	SIZE	MOUNTING HEIGHT	NOTES
T1	PAPER TOWEL DISPENSER	OWNER FURNISHED, GC INSTALL	NA	NA	48" AFF TO BOTTOM OF UNIT	SURFACE MOUNTED
T2	TOILET TISSUE HOLDER	OWNER FURNISHED, GC INSTALL	NA	NA	30" AFF TO TOP OF UNIT	SURFACE MOUNTED
T3	SOAP DISPENSER	OWNER FURNISHED, GC INSTALL	NA	NA	44" AFF TO BOTTOM OF UNIT	SURFACE MOUNTED
T4	BODY WASH/SHAMPOO DISPENSER (SHOWER)	OWNER FURNISHED, GC INSTALL	NA	NA	48" AFF TO CENTERLINE OF UNIT	SURFACE MOUNTED
T5	VERTICAL GRAB BAR - 16"	BOBRICK	B5806 X 18	1 1/2" O.D. X 18"	39"-41" AFF TO BOTTOM UNIT	MOUNTED VERTICALLY
T6	MIRROR - PLATE GLASS (ABOVE SINKS)	CUSTOM FABRICATIONS	CUSTOM	60" H X 36" W	40" AFF MAX TO GLAZING	SURFACE MOUNTED
T7	MIRROR - PLATE GLASS (FULL HEIGHT)	CUSTOM FABRICATIONS	CUSTOM	60" H X 36" W	16" AFF TO BOTTOM OF UNIT	SURFACE MOUNTED
T8	GRAB BARS (ADA STALLS)	BOBRICK	B5806	1 1/2" DIAMETER; 36" BEHIND TOILET, 42" SIDE OF TOILET	33"-36" AFF TO CENTERLINE OF UNIT	SURFACE-MOUNTED; SAFETY GRIP FINISH
T9	GRAB BARS (AMB STALLS)	BOBRICK	B5806	1 1/2" DIAMETER; 42" SIDE OF TOILET	33"-36" AFF TO CENTERLINE OF UNIT	SURFACE-MOUNTED; SAFETY GRIP FINISH
T10	GRAB BARS (SHOWER)	BOBRICK	B5806	1 1/2" DIAMETER; 36" ON SHOWER SIDE, 24" OPPOSITE OF SEAT	33"-36" AFF TO CENTERLINE OF UNIT	SURFACE-MOUNTED; SAFETY GRIP FINISH
T11	SANITARY NAPKIN DISPOSAL UNIT	BOBRICK	B254	15 1/8" H X 10 11/16" W X 4 1/16" D	30" AFF TO TOP OF UNIT	SURFACE MOUNTED
T12	ELECTRICAL HAND DRYER	BOBRICK	B7128 115V	13 19/32" H X 13 25/32" W X 4"D	40" AFF TO CENTER OF PUSH BUTTON	SURFACE MOUNTED; ELECTRICAL REQUIREMENTS 260000
T14	SHOWER CURTAIN & ROD	BOBRICK	B6107x48 & B204-2	20 GAUGE, 1" DIAMETER ROD, 48" LENGTH	78" MAX AFF TO TOP OF UNIT	SURFACE MOUNTED; GC TO CUT LENGTH OF ROD IN THE FIELD TO FIT OPENING; QTY:7 B204-1 SHOWER CURTAIN HOOKS
T15	SHOWER CURTAIN & ROD	BOBRICK	B6107x60 & B204-3			SURFACE MOUNTED; QTY:12 B204-1 SHOWER CURTAIN HOOKS
T16	TOWEL BAR	BOBRICK	B530X24	1" DIAMETER, 24" W	36" TO 48" AFF TO TOP OF UNIT	SURFACE MOUNTED
T17	DOUBLE ROBE HOOK	BOBRICK	B672	4" W BAR; FLANGE IS 2" X 2"	38" TO 48" AFF TO TOP OF UNIT	SURFACE MOUNTED
T18	PHENOLIC SHOWER SEAT	BOBRICK	B-5181	36" X 12" X 19"	19" AFF TO TOP OF UNFOLDED SEAT	SURFACE MOUNTED
T19	SHOWER BENCH	SPEC SECTION 105129	NA	NA		
T21	SUIT SPINNER	SPEC SECTION 113100	NA	NA	40" AFF TO TOP OF UNIT	SURFACE MOUNTED; ELECTRICAL REQUIREMENTS 260000
T22	MOP-BROOM HOLDER	BOBRICK	B223X36	36" L	48" AFF TO CENTER OF UNIT	SURFACE MOUNTED

DAVIS ARCHITECTS
2413

HOMWOOD PATRICK PARK POOL

HOMWOOD PARKS AND RECREATION

HOMWOOD, AL

DAVIS ARCHITECTS

OWNER: HOMWOOD PARKS AND RECREATION
1632 OXMOOR ROAD
HOMWOOD, AL 35209
205-322-6704
ATTN: BERKLEY SQUIRES

ARCHITECT: DAVIS ARCHITECTS, INC.
120 23RD STREET SOUTH
BRIMMINGHAM, AL 35233
205-322-7482
ATTN: JIM HARTSELL

LANDSCAPE ARCHITECT: HNP
1914 28TH AVE S
BRIMMINGHAM, AL 35209
205-324-4447
ATTN: TOMMY HOLCOMBE / ED NORTON

CONSTRUCTION MANAGER: BL HARBERT
820 SHADES CREEK PARKWAY, SUITE 3000
BRIMMINGHAM, AL 35209
205-982-2900
ATTN: JOHN HANSON

STRUCTURAL ENGINEER: LEYD INC.
716 SOUTH 30TH STREET
BRIMMINGHAM, AL 35233
205-251-4500
ATTN: WIM BISHOP / BRAD CHRISTOPHER

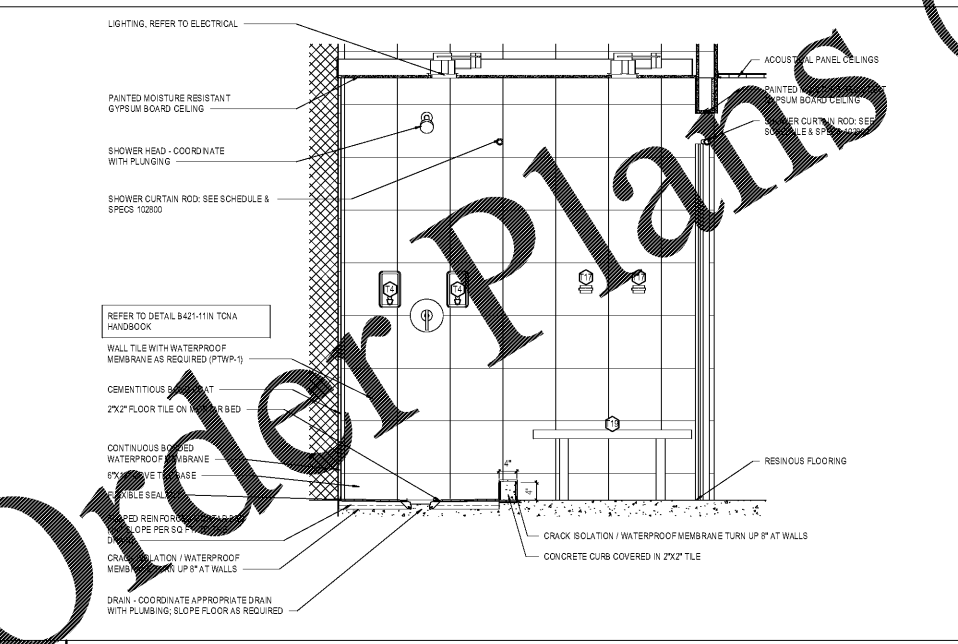
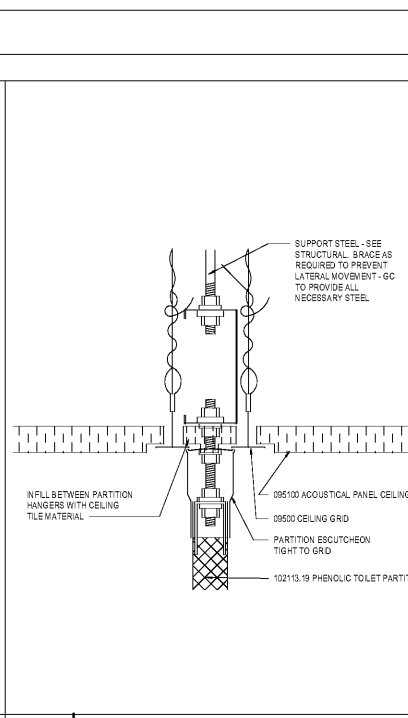
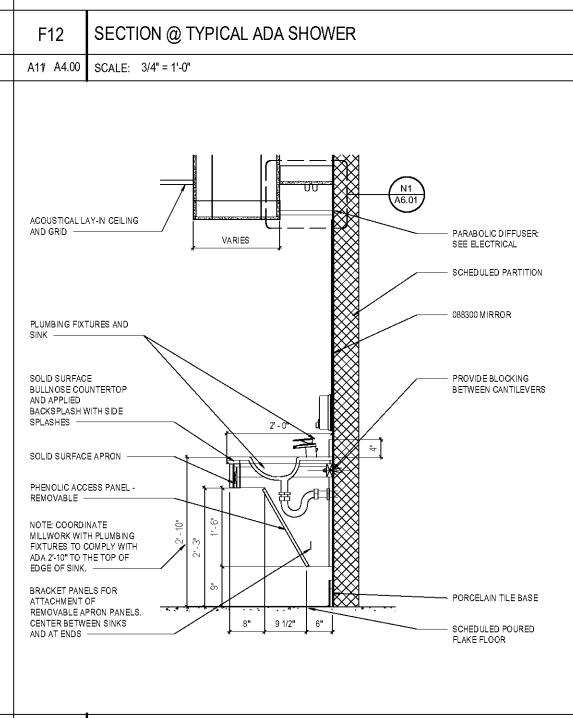
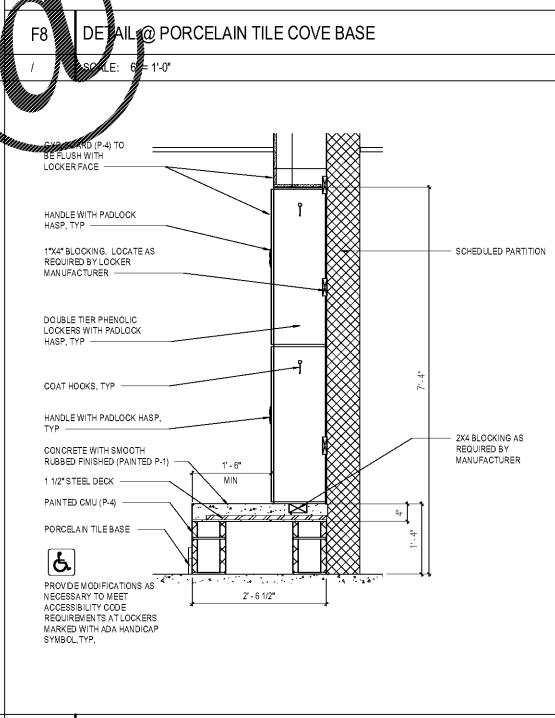
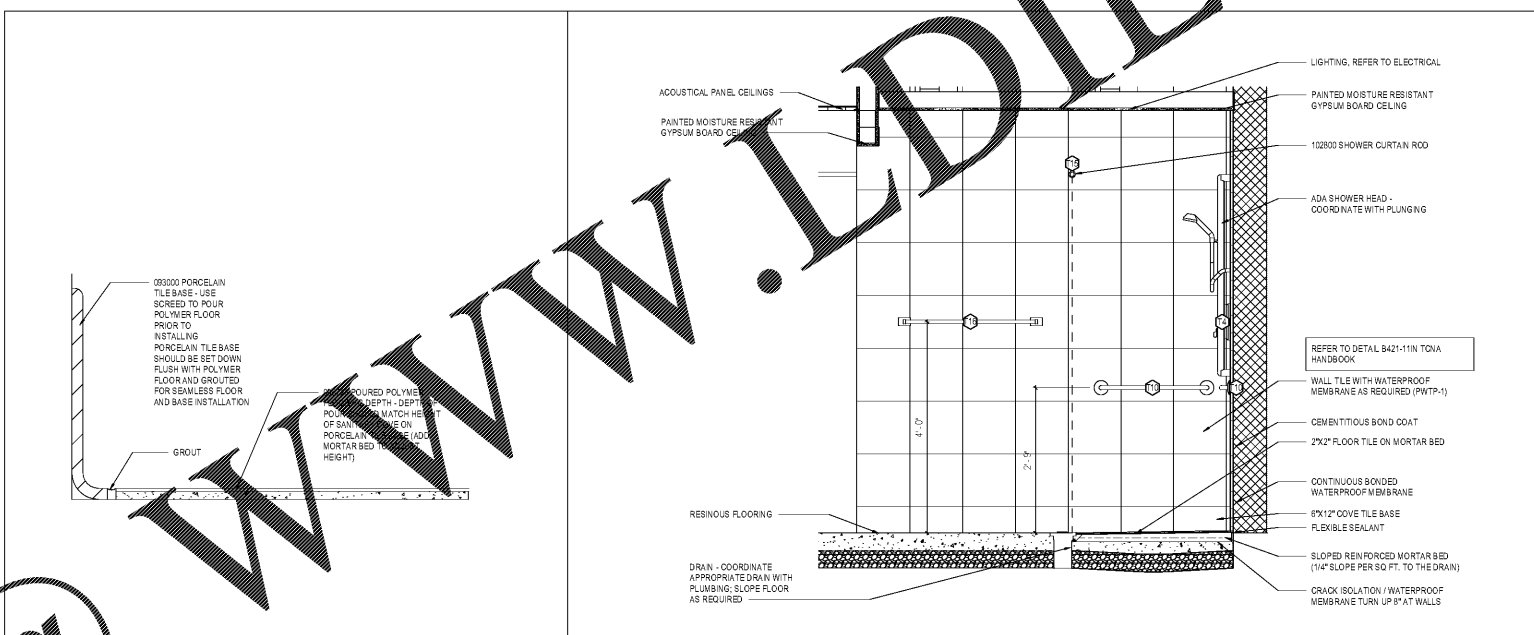
MECHANICAL ENGINEER: WHITAKER & RAWSON
3332 OLD MONTGOMERY HIGHWAY
SUITE 103
BRIMMINGHAM, AL 35209
205-948-5128
ATTN: MARK D'ANDREA AND DAN WHITAKER

CIVIL ENGINEER: LEYD INC.
716 SOUTH 30TH STREET
BRIMMINGHAM, AL 35233
205-251-4500
ATTN: CURTIS EATMAN AND BRIAN HATCHER

ELECTRICAL ENGINEER: FISHER ARNOLD
1507 ALEX DR.
SUITE 101
BRIMMINGHAM, AL 35210
205-833-7033
ATTN: JOSEPH KUMU AND NICHOLAS BROWN

PLUMBING / FIRE PROTECTION ENGINEER: WHITAKER & RAWSON
3332 OLD MONTGOMERY HIGHWAY
SUITE 103
BRIMMINGHAM, AL 35209
205-948-5107
ATTN: ERIC HARTWIG

POOL CONSULTANT: COUNSILMAN HUNSAKE
10733 SUNSET OFFICE DRIVE
SUITE 400
ST. LOUIS, MO 63127
314-894-1245
ATTN: JEFF NODORFT



A1	SECTION @ TYPICAL SHOWER	A8	SECTION @ TYPICAL LOCKER WITH BENCH	A12	SECTION @ TYPICAL RESTROOM VANITY	A16	CEILING DETAIL @ TOILET PARTITIONS
A11 A4.00	SCALE: 3/4\" = 1'-0"	A4 / A4.00	SCALE: 3/4\" = 1'-0"	G1 / A4.00	SCALE: 3/4\" = 1'-0"	/	SCALE: 6\" = 1'-0"

Order Plans

REV DATE DESCRIPTION

DATE: OCTOBER 6, 2017

PROJECT: 100% CONSTRUCTION SET

PROJECT NO: 3822

SHEET TITLE: RESTROOM SECTIONS & DETAILS

DRAWING NO: