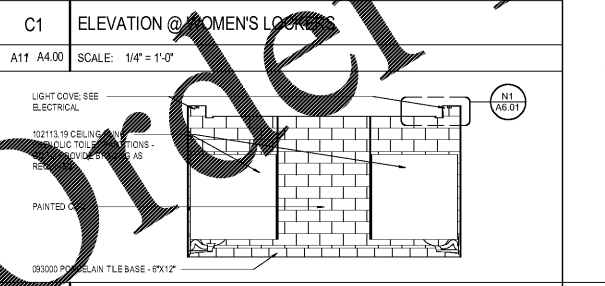
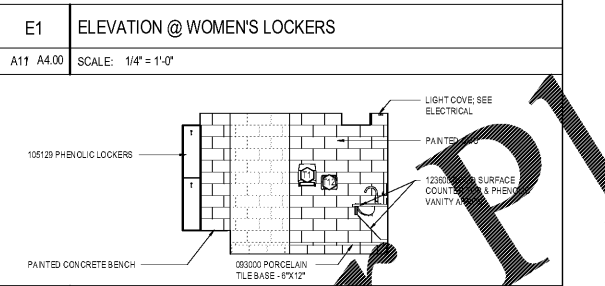
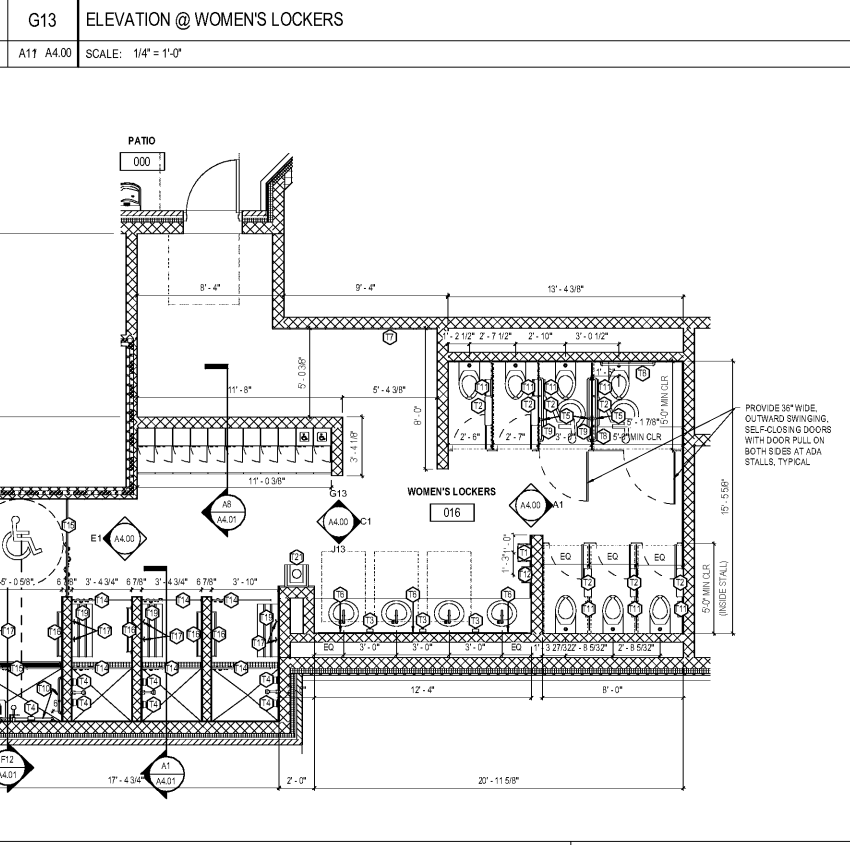
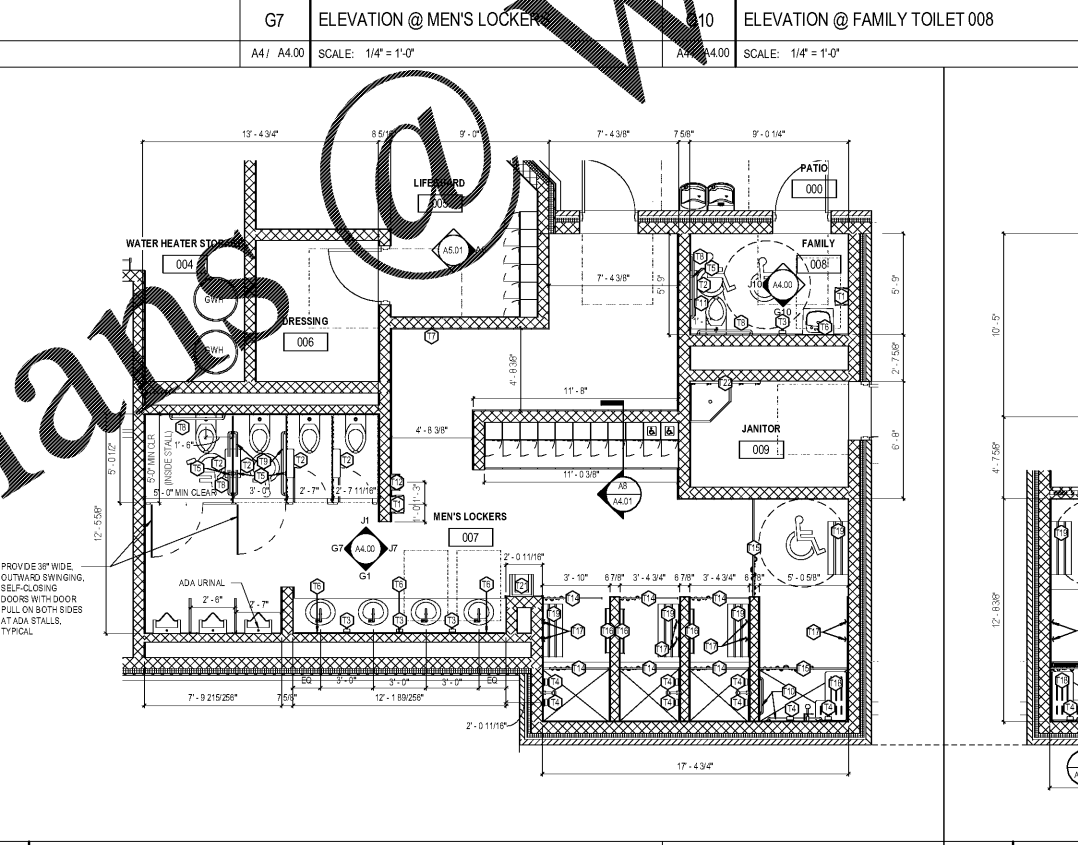
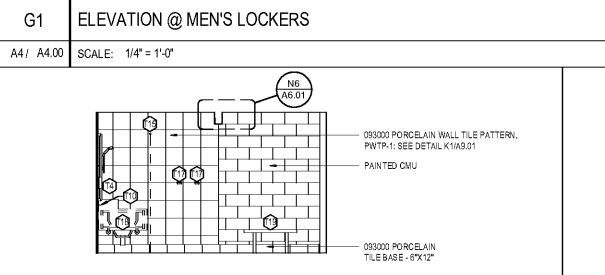
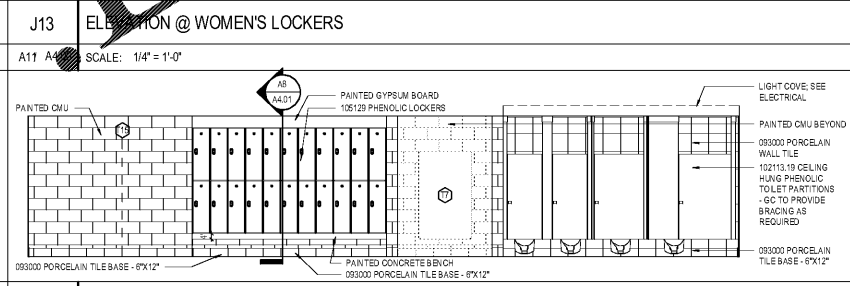
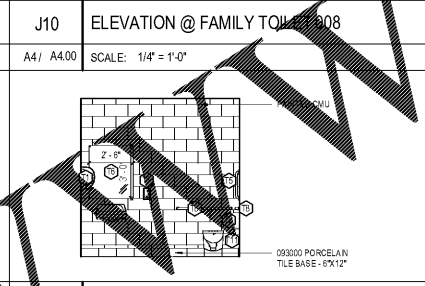
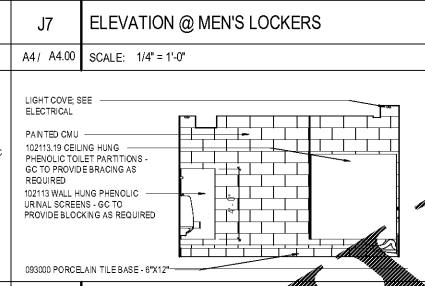
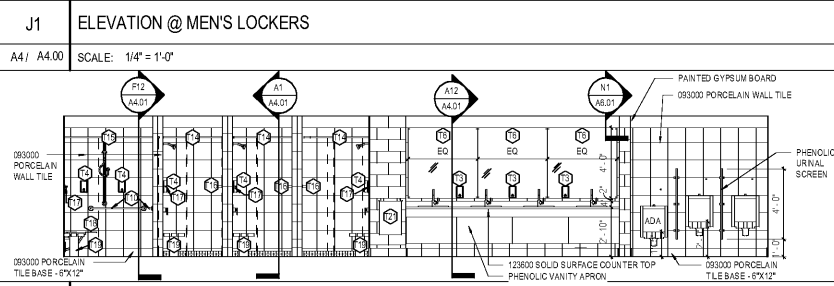
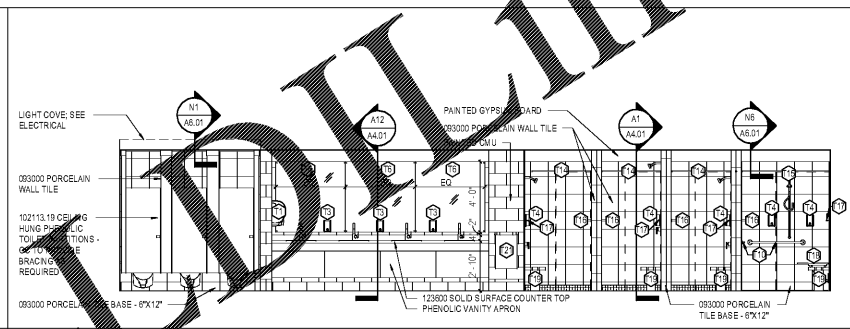
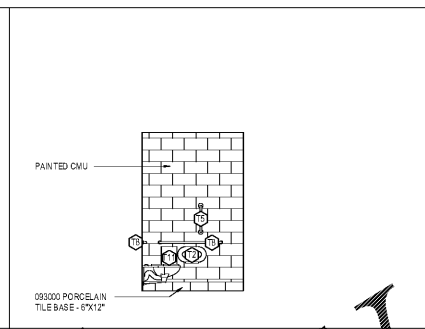
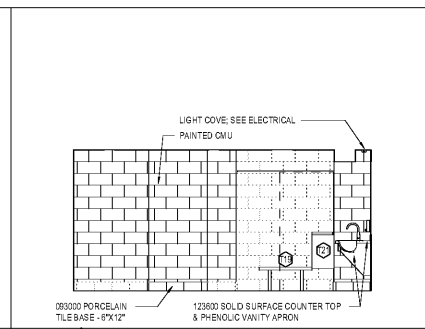
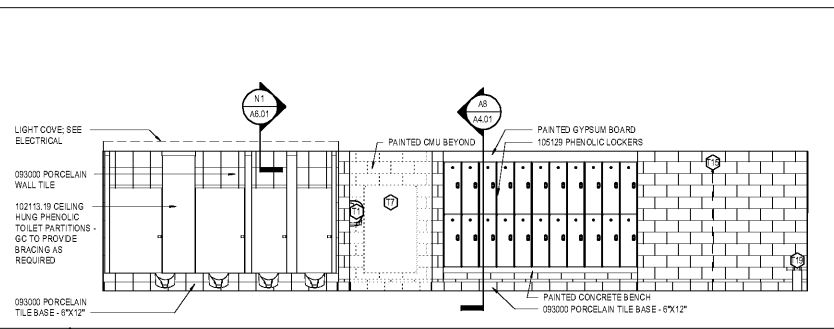


- GENERAL NOTES**
1. MOUNTING HEIGHTS PER MANUFACTURER'S RECOMMENDATIONS AND CODES (LOCAL, STATE, ADA, ETC)
  2. REFER TO SHEET G1.3 PROJECT STANDARDS.
  3. TOILET ACCESSORIES TO BE STAINLESS STEEL WITH NO. 4 FINISH (UNLESS OTHERWISE NOTED).
  4. MODEL NUMBERS LISTED BY BOBRICK OR PRIOR APPROVED EQUAL (UNLESS OTHERWISE NOTED).
  5. PROVIDE "TRAP WRAP" AT EXPOSED PIPES - SEE SPECIFICATIONS.
  6. PROVIDE MOISTURE-RESISTANT GWB AT ALL TOILETS WHERE GWB IS SPECIFIED.
  7. PROVIDE TILE BACKER BOARD WITH WALL TILE AT ALL METAL STUD FRAMED WALLS. SEE ELEVATIONS AND FINISH PLANS FOR EXTENT OF PATTERN.
  8. CMU AT ALL OUTSIDE CORNERS TO BE BULLNOSE. BASE COURSE AND COURSE BELOW CEILING TO HAVE 90 DEGREE CORNERS.
  9. CUT CMU COURSE BELOW FINISH FLOOR AT PARTITIONS ON RECESSED SLAB TO MAINTAIN COURSING WITH ADJACENT WALLS.
  10. SLOPE FLOOR TO DRAIN - CONTRACTOR SHOULD TAKE SPECIAL CARE IN AREAS WHERE PARTITIONS ARE SET IN FLOOR THAT WATER IS DIVERTED TOWARD OPENING AND TO FLOOR DRAIN.
  11. UNISTRUT TYPE FRAMING IS GENERALLY PROVIDED FOR THE SUPPORT OF THE TOILET PARTITIONS. SEE DETAIL A16/A4.01 (PROVIDED BY GC)
  12. PAPER TOWEL DISPENSER (T1), TOILET TISSUE HOLDER (T2), SOAP DISPENSER (T3), AND BODY WASH / SHAMPOO DISPENSER (T4) ARE OWNER FURNISHED AND INSTALLED. NOTE: INSTALLER OF OWNER FURNISHED ACCESSORIES TO COMPLY WITH CODES, ADA, AND ANSI AS THE RELATE TO ACTUAL ACCESSORIES PURCHASED AND COORDINATE WITH CONTRACTOR PROVIDED AND INSTALLED ACCESSORIES.
  13. REFER TO SPECIFICATION SECTIONS 063000 (MIRRORS), 102113.19 (TOILET COMPARTMENTS), 102600 (TOILET, BATH, AND LAUNDRY ACCESSORIES), & 105129 (SOLID PHENOLIC LOCKERS).

MARK	DESCRIPTION	MANUFACTURER	MODEL	SIZE	MOUNTING HEIGHT	NOTES
T1	PAPER TOWEL DISPENSER	OWNER FURNISHED, GC INSTALL	NA	NA	48" AFF TO BOTTOM OF UNIT	SURFACE MOUNTED
T2	TOILET TISSUE HOLDER	OWNER FURNISHED, GC INSTALL	NA	NA	30" AFF TO TOP OF UNIT	SURFACE MOUNTED
T3	SOAP DISPENSER	OWNER FURNISHED, GC INSTALL	NA	NA	44" AFF TO BOTTOM OF UNIT	SURFACE MOUNTED
T4	BODY WASH/SHAMPOO DISPENSER (SHOWER)	OWNER FURNISHED, GC INSTALL	NA	NA	48" AFF TO CENTERLINE OF UNIT	SURFACE MOUNTED
T5	VERTICAL GRAB BAR- 16"	BOBRICK	B5806 X 18	1 1/2" O.D. X 18"	39"-41" AFF TO BOTTOM UNIT	MOUNTED VERTICALLY
T6	MIRROR - PLATE GLASS (ABOVE SINKS)	CUSTOM FABRICATIONS	CUSTOM	40" AFF MAX TO GLAZING	40" AFF TO BOTTOM UNIT	SURFACE MOUNTED
T7	MIRROR - PLATE GLASS (FULL HEIGHT)	CUSTOM FABRICATIONS	CUSTOM	60" H X 36" W	16" AFF TO BOTTOM OF UNIT	SURFACE MOUNTED
T8	GRAB BARS (ADA STALLS)	BOBRICK	B5806	1 1/2" DIAMETER; 36" BEHIND TOILET, 42" SIDE OF TOILET	33"-36" AFF TO CENTERLINE OF UNIT	SURFACE-MOUNTED; SAFETY GRIP FINISH
T9	GRAB BARS (AMB STALLS)	BOBRICK	B5806	1 1/2" DIAMETER; 42" SIDE OF TOILET	33"-36" AFF TO CENTERLINE OF UNIT	SURFACE-MOUNTED; SAFETY GRIP FINISH
T10	GRAB BARS (SHOWER)	BOBRICK	B5806	1 1/2" DIAMETER; 36" ON SHOWER SEAT, 24" OPPOSITE OF SEAT	33"-36" AFF TO CENTERLINE OF UNIT	SURFACE-MOUNTED; SAFETY GRIP FINISH
T11	SANITARY NAPKIN DISPOSAL UNIT	BOBRICK	B254	15 1/8" H X 10 11/16" W X 4 1/16" D	30" AFF TO TOP OF UNIT	SURFACE MOUNTED
T12	ELECTRICAL HAND DRYER	BOBRICK	B7128 115V	13 19/32" H X 13 25/32" W X 4" D	40" AFF TO CENTER OF PUSH BUTTON	SURFACE MOUNTED. ELECTRICAL REQUIREMENTS 260000
T14	SHOWER CURTAIN & ROD	BOBRICK	B6107x48 & B204-2	20 GAUGE, 1" DIAMETER ROD, 48" LENGTH	78" MAX AFF TO TOP OF UNIT	SURFACE MOUNTED. GC TO CUT LENGTH OF ROD IN THE FIELD TO FIT OPENING; QTY:7 B204-1 SHOWER CURTAIN HOOKS
T15	SHOWER CURTAIN & ROD	BOBRICK	B6107x60 & B204-3			SURFACE MOUNTED. QTY:12 B204-1 SHOWER CURTAIN HOOKS
T16	TOWEL BAR	BOBRICK	B530X24	1" DIAMETER, 24" W	38" TO 48" AFF TO TOP OF UNIT	SURFACE MOUNTED
T17	DOUBLE ROBE HOOK	BOBRICK	B672	4" W BAR; FLANGE IS 2" X 2"	38" TO 48" AFF TO TOP OF UNIT	SURFACE MOUNTED
T18	PHENOLIC SHOWER SEAT	BOBRICK	B-5181	36" X 12" X 19"	19" AFF TO TOP OF UNFOLDED SEAT	SURFACE MOUNTED
T19	SHOWER BENCH	SPEC SECTION 105129	NA	NA	NA	NA
T21	SUIT SPINNER	SPEC SECTION 113100	NA	NA	40" AFF TO TOP OF UNIT	SURFACE MOUNTED. ELECTRICAL REQUIREMENTS 260000
T22	MOP-BROOM HOLDER	BOBRICK	B223X36	36" L	48" AFF TO CENTER OF UNIT	SURFACE MOUNTED



**HOMWOOD PATRIOT PARK POOL**  
HOMWOOD PARKS AND RECREATION

**HOMWOOD PARKS AND RECREATION; HOMWOOD, AL**



OWNER: HOMWOOD PARKS AND RECREATION  
1632 OXMOOR ROAD, HOMWOOD, AL 35209  
205-322-6704  
ATTN: BERKLEY SQUIRES

ARCHITECT: DAVIS ARCHITECTS, INC.  
120 23RD STREET SOUTH, BRIMMINGHAM, AL 35233  
205-322-7482  
ATTN: JIM HARTSELL

LANDSCAPE ARCHITECT: HNP  
1914 28TH AVE S, BRIMMINGHAM, AL 35209  
205-324-4447  
ATTN: TOMMY HOLCOMBE / ED NORTON

CONSTRUCTION MANAGER: BL HARBERT  
820 SHADES CREEK PARKWAY, SUITE 3000, BRIMMINGHAM, AL 35209  
205-982-2900  
ATTN: JOHN HANSON

STRUCTURAL ENGINEER: LEYD INC.  
716 SOUTH 30TH STREET, BRIMMINGHAM, AL 35233  
205-251-4500  
ATTN: VIKI BISHOP / BRAD CHRISTOPHER

MECHANICAL ENGINEER: WHITAKER & RAWSON  
3332 OLD MONTGOMERY HIGHWAY, SUITE 103, BRIMMINGHAM, AL 35209  
205-948-5128  
ATTN: MARK D'ANDREA AND DAN WHITAKER

CIVIL ENGINEER: LEYD INC.  
716 SOUTH 30TH STREET, BRIMMINGHAM, AL 35233  
205-251-4500  
ATTN: CURTIS EATMAN AND BRIAN HATCHER

ELECTRICAL ENGINEER: FISHER ARNOLD  
1507 ALEX DR., SUITE 101, BRIMMINGHAM, AL 35210  
205-833-7033  
ATTN: JOSEPH KUMU AND NICHOLAS BROWN

PLUMBING / FIRE PROTECTION ENGINEER: WHITAKER & RAWSON  
3332 OLD MONTGOMERY HIGHWAY, SUITE 103, BRIMMINGHAM, AL 35209  
205-948-5107  
ATTN: ERIK HARTWIG

POOL CONSULTANT: COUNSILMAN HUNSAKE  
10733 SUNSET OFFICE DRIVE, SUITE 400, ST. LOUIS, MO 63127  
314-894-1245  
ATTN: JEFF NODORFT

REV	DATE	DESCRIPTION

DATE: OCTOBER 6, 2017  
PROJECT: 100% CONSTRUCTION SET  
PROJECT NO: 3822

DESIGNED BY: DAVIS ARCHITECTS  
PROJECT NO: 3822

SHEET TITLE: ENLARGED RESTROOM PLANS & ELEVATIONS

DRAWING NO: A4.00