

DOOR SCHEDULE

MATERIALS LEGEND

- HM HOLLOW METAL
- FRP FIBER REINFORCED PLASTIC
- ALUM ALUMINUM
- STL STAINLESS STEEL
- PT PAINTED
- PF PREFINISHED

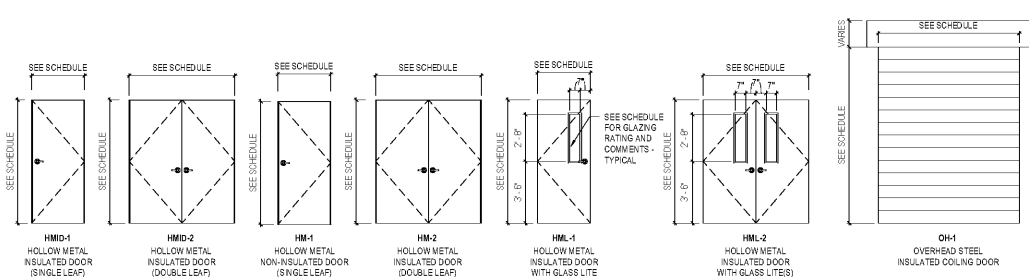
COMMENTS

1. CLOSER
2. PANIC DEVICE
3. TEMPERED GLAZING
4. CLEAR INSULATING GLAZING
5. NOT USED
6. REMOVABLE VERTICAL MULLION
7. HOLD-OPEN
8. SPRING HINGES
9. AUDIBLE ALARM
10. MAGNETIC LATCH

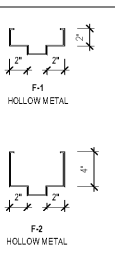
DOOR NO.	TYPE	DOOR				FIRE RATING	HARDWARE	FRAME				COMMENTS
		WIDTH	HEIGHT	MATERIAL	FINISH			MATERIAL	FINISH	JAMB	HEAD	
001	HMD-2	6'-0"	7'-0"	HM	PT	N/A	1	HM	PT	F-2	F-2	1
001A	HMD-1	3'-0"	7'-0"	HM	PT	N/A	2	HM	PT	F-1	F-2	1
002	FRP-1	6'-0"	7'-0"	FRP	PT	1HR	1.1	FRP	PT	F-2	F-2	1
003	FRP-1	6'-0"	7'-0"	FRP	PT	1HR	1.1	FRP	PT	F-2	F-2	1
004	HMD-2	6'-0"	7'-0"	HM	PT	N/A	3	HM	PT	F-2	F-2	1
004B	HM-1	3'-0"	7'-0"	HM	PT	N/A	4	HM	PT	F-1	F-2	1
005	HMD-1	3'-0"	7'-0"	HM	PT	N/A	5	HM	PT	F-1	F-2	1
006	HM-1	3'-0"	7'-0"	HM	PT	N/A	6	HM	PT	F-1	F-2	1
007	HMD-1	3'-0"	7'-0"	HM	PT	N/A	7	HM	PT	F-1	F-2	1
008	HMD-1	3'-0"	7'-0"	HM	PT	N/A	8	HM	PT	F-1	F-2	1
009	HMD-1	3'-0"	7'-0"	HM	PT	N/A	9	HM	PT	F-1	F-2	1
011	HMD-2	6'-0"	7'-0"	HM	PT	N/A	10	HM	PT	F-2	F-2	1,3,4
012	HMD-1	3'-0"	7'-0"	HM	PT	N/A	11	HM	PT	F-1	F-2	1,3,4
014	HMD-1	3'-0"	7'-0"	HM	PT	N/A	12	HM	PT	F-1	F-2	1
015	HMD-1	3'-0"	7'-0"	HM	PT	N/A	12	HM	PT	F-1	F-2	1
016	HMD-1	3'-0"	7'-0"	HM	PT	N/A	7	HM	PT	F-1	F-2	1
017	HMD-1	3'-8"	7'-0"	HM	PT	N/A	2	HM	PT	F-1	F-2	1
018	HM-1	3'-0"	7'-0"	HM	PT	N/A	13	HM	PT	F-1	F-2	1
019	HM-2	6'-0"	7'-0"	HM	PT	N/A	14	HM	PT	F-2	F-2	1,2,9
G001	GATE*	6'-0"	8'-0"	ALUM	PF	N/A	16	ALUM	PF	-	-	7,8,10
G002	GATE*	6'-0"	8'-0"	ALUM	PF	N/A	16	ALUM	PF	-	-	7,8,10
G003	GATE*	6'-0"	8'-0"	ALUM	PF	N/A	17	ALUM	PF	-	-	7,8,10
G004A	GATE*	3'-0"	4'-0"	ALUM	PF	N/A	19	ALUM	PF	-	-	8,10
G004B	GATE*	3'-0"	4'-0"	ALUM	PF	N/A	19	ALUM	PF	-	-	8,10
G005A	GATE*	3'-0"	4'-0"	ALUM	PF	N/A	19	ALUM	PF	-	-	8,10
G005B	GATE*	3'-0"	4'-0"	ALUM	PF	N/A	19	ALUM	PF	-	-	8,10
G006	GATE*	3'-0"	4'-0"	ALUM	PF	N/A	19	ALUM	PF	-	-	8,10
G007A	GATE*	3'-0"	4'-0"	ALUM	PF	N/A	19	ALUM	PF	-	-	8,10
G007B	GATE*	3'-0"	4'-0"	ALUM	PF	N/A	19	ALUM	PF	-	-	8,10
G008	GATE*	3'-0"	4'-0"	ALUM	PF	N/A	19	ALUM	PF	-	-	8,10
G009A	GATE*	3'-0"	4'-0"	ALUM	PF	N/A	19	ALUM	PF	-	-	8,10
G009B	GATE*	3'-0"	4'-0"	ALUM	PF	N/A	19	ALUM	PF	-	-	8,10
G010	GATE*	6'-0"	8'-0"	ALUM	PF	N/A	16	ALUM	PF	-	-	2,6,8,9
G011	GATE*	6'-0"	8'-0"	ALUM	PF	N/A	16	ALUM	PF	-	-	2,6,8,9
G012	GATE*	6'-0"	8'-0"	ALUM	PF	N/A	16	ALUM	PF	-	-	2,6,8,9
G013	GATE*	6'-0"	8'-0"	ALUM	PF	N/A	16	ALUM	PF	-	-	2,6,8,9
G014	GATE*	6'-0"	8'-0"	ALUM	PF	N/A	16	ALUM	PF	-	-	2,6,8,9
G015	GATE*	6'-0"	8'-0"	ALUM	PF	N/A	16	ALUM	PF	-	-	2,6,8,9
OH001	OH1	8'-0"	10'-0"	STL	PF	N/A	15	STL	PF	2"	-	SEE SPECS

GENERAL NOTES:
 * ALL GATE LOCATIONS CAN BE FOUND ON SHEET A0.02 AND GATE ELEVATIONS CAN BE FOUND ON SHEET A0.03 - GATE SPECIFICATIONS ARE NOT PROVIDED BY ELEVATIONS - SEE PRODUCT TYPE FOR SPECIFICATIONS

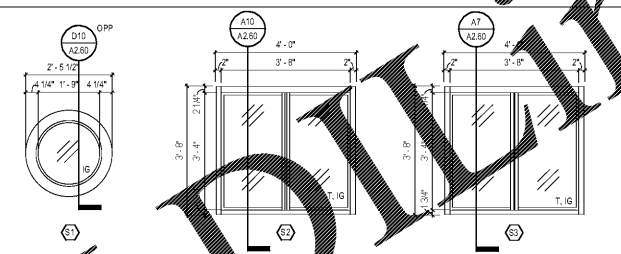
DOOR TYPE ELEVATIONS



FRAME PROFILES



WINDOW TYPE ELEVATIONS



WINDOW TYPE NOTES

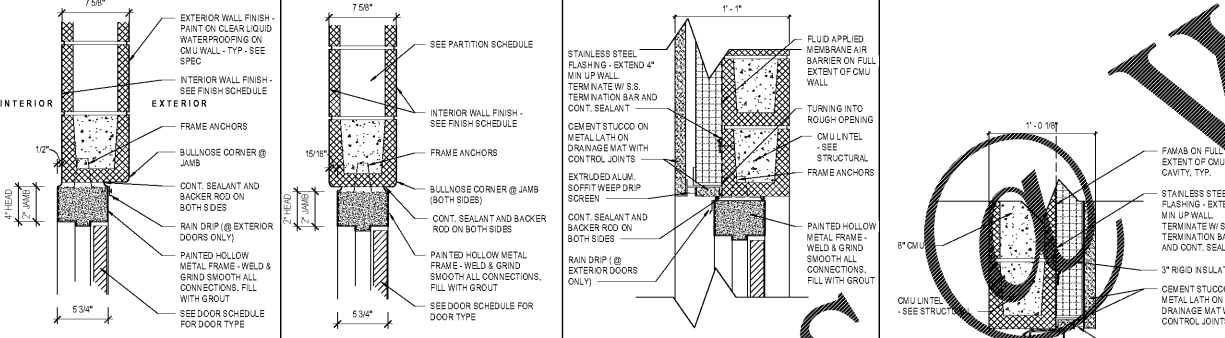
1. GC FIELD VERIFY WINDOW FINISHES AND DIMENSIONS PER TO SHOP DRAWINGS SUBMITTAL.
2. GC TO COORDINATE PASSTHROUGH WINDOW LOCATION WITH ADA REQUIREMENTS AND INTERIOR COUNTER HEIGHT LOCATIONS WITH OWNER.
3. GC VERIFY WINDOW SPECIFICATIONS.
4. WINDOWS TO BE PREFINISHED DARK BRONZE - SEE SPECIFICATIONS FOR FINISHES AND BASIS OF DESIGN.

GLAZING LEGEND

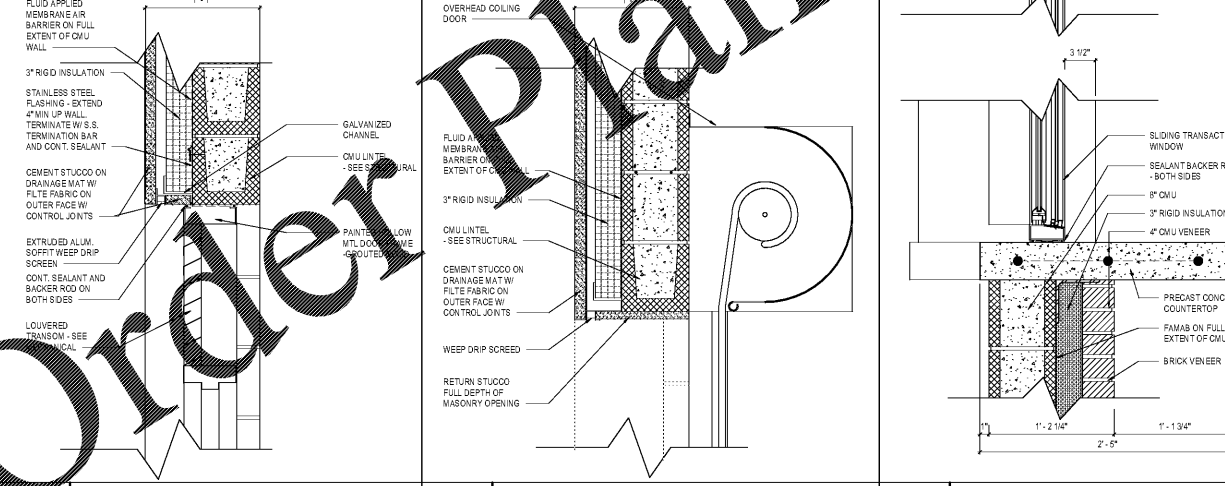
- 1 TEMPERED
- 2 CLEAR INSULATING GLASS

DOOR SCHEDULE - NOTES

1. COVER AND PROTECT ALL NEW DOOR(S) AND/OR FRAME(S) THAT CONTAIN U.L. LISTING MARKER PLATES.
2. IF A U.L. LISTING MARKER IS PAINTED OVER, DAMAGED, OR REMOVED DURING CONSTRUCTION THE ENTIRE DOOR MUST BE REPLACED AT THE EXPENSE OF THE G.C. NOT THE OWNER. (THE INSTALLATION WILL ALSO INCLUDE ANY DEMOLITION, PATCHING, PAINTING, ETC... TO THE SURROUNDING FINISHES THAT MAY BECOME DAMAGED BY THE REMOVAL/REPLACEMENT OF THE DOOR OR DOOR FRAME).
3. THE U.L. LISTING MARKER PLATE MUST BE UNCOVERED, UNPAINTED AND VISIBLE FOR INSPECTION.
4. DOOR HARDWARE SET SCHEDULED CAN BE REFERENCED IN THE HARDWARE SPECIFICATION.
5. SEE SITE PLAN FOR GATE LOCATION.



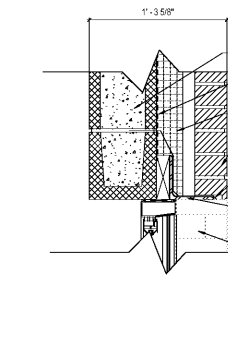
E1 HEAD/JAMB DETAIL CMU SCALE: 1 1/2" = 1'-0"
 E3 HEAD/JAMB DETAIL CMU SCALE: 1 1/2" = 1'-0"
 E5 HEAD/JAMB DETAIL STUCCO SCALE: 1 1/2" = 1'-0"



A1 HEAD DETAIL LOUVER SCALE: 1 1/2" = 1'-0"
 A4 HEAD DETAIL COILING DOOR H1/ A3.50 SCALE: 1 1/2" = 1'-0"
 A7 WINDOW DETAIL @ CONCESSION 1 / A2.60 SCALE: 1 1/2" = 1'-0"
 A10 WINDOW DETAIL @ OFFICE 4 / A2.60 SCALE: 1 1/2" = 1'-0"
 A12 HEAD DETAIL SCALE: 1 1/2" = 1'-0"
 A15 ATYPICAL CJ @ EXT BEARING SCALE: 1 1/2" = 1'-0"

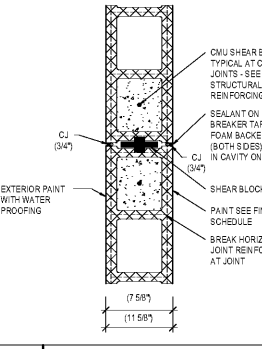
TYPICAL SEALANT JOINT

SCALE: 12" = 1'-0"



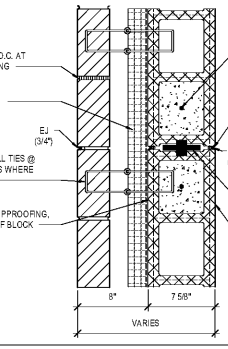
TYPICAL BULLNOSE DETAIL

SCALE: 3/4" = 1'-0"



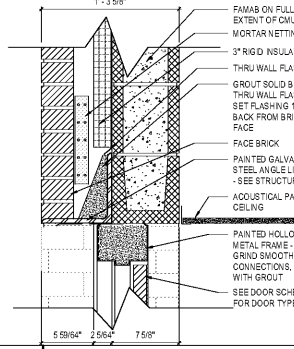
TYPICAL SHEATHING

SCALE: 6" = 1'-0"



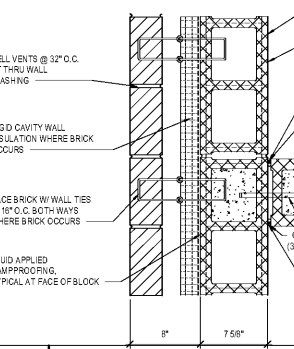
TYPICAL C. J. @ BEARING WALL

SCALE: 1 1/2" = 1'-0"



TYPICAL CJ @ EXT WALL PLAN

SCALE: 1 1/2" = 1'-0"



HOPEWOOD PARKS AND RECREATION; HOPEWOOD, AL



OWNER:
 HOPEWOOD PARKS AND RECREATION
 1632 OXMOOR ROAD
 HOPEWOOD, AL 35209
 205-322-6704
 ATTN: JIM HARTSELL

ARCHITECT:
 DAVIS ARCHITECTS, INC.
 120 23RD STREET SOUTH
 BRIMMINGHAM, AL 35233
 205-322-7482
 ATTN: JIM HARTSELL

LANDSCAPE ARCHITECT:
 HNP
 1914 26TH AVE S
 BRIMMINGHAM, AL 35209
 205-324-4447
 ATTN: TOMMY HOLCOMBE / ED NORTON

CONSTRUCTION MANAGER:
 BL HARBERT
 820 SHADES CREEK PARKWAY, SUITE 3000
 BRIMMINGHAM, AL 35209
 205-982-2900
 ATTN: JOHN HANSON

STRUCTURAL ENGINEER:
 LEYD INC.
 715 SOUTH 30TH STREET
 BRIMMINGHAM, AL 35233
 205-251-4500
 ATTN: WIM BISHOP / BRAD CHRISTOPHER

MECHANICAL ENGINEER:
 WHITAKER & RAWSON
 3332 OLD MONTGOMERY HIGHWAY
 SUITE 103
 BRIMMINGHAM, AL 35209
 205-945-5107
 ATTN: MARK D'ANDREA AND DAN WHITAKER

CIVIL ENGINEER:
 LEYD INC.
 715 SOUTH 30TH STREET
 BRIMMINGHAM, AL 35233
 205-251-4500
 ATTN: CURTIS EATMAN AND BRIAN HATCHER

ELECTRICAL ENGINEER:
 FISHER ARNOLD
 1507 ALEX DR.
 BRIMMINGHAM, AL 35210
 205-832-7633
 ATTN: JOSEPH KUMU AND NICHOLAS BROWN

PLUMBING / FIRE PROTECTION ENGINEER:
 WHITAKER & RAWSON
 3332 OLD MONTGOMERY HIGHWAY
 SUITE 103
 BRIMMINGHAM, AL 35209
 205-945-5107
 ATTN: ERIC HARTWIG

POOL CONSULTANT:
 COUNSLMAN HUNSAKE
 SUITE 400
 ST. LOUIS, MO 63127
 314-894-1245
 ATTN: JEFF NODDRAFT

REV	DATE	DESCRIPTION

DATE: OCTOBER 6, 2017
 PERCENT: 100% CONSTRUCTION SET
 DRAWING NO. 3822
 SHEET TITLE: DOOR AND WINDOW SCHEDULE AND ELEVATIONS